

REV. 1
PART NO. 17601
PRINTED IN U.S.A.
PRICE 35¢

PARTS LIST



240HG	UT10628
	UT10629
	UT10633
	UT10633-A
240SL	UT10632
	UT10634
	UT10635

VIBRATION ISOLATED
CHAIN SAWS

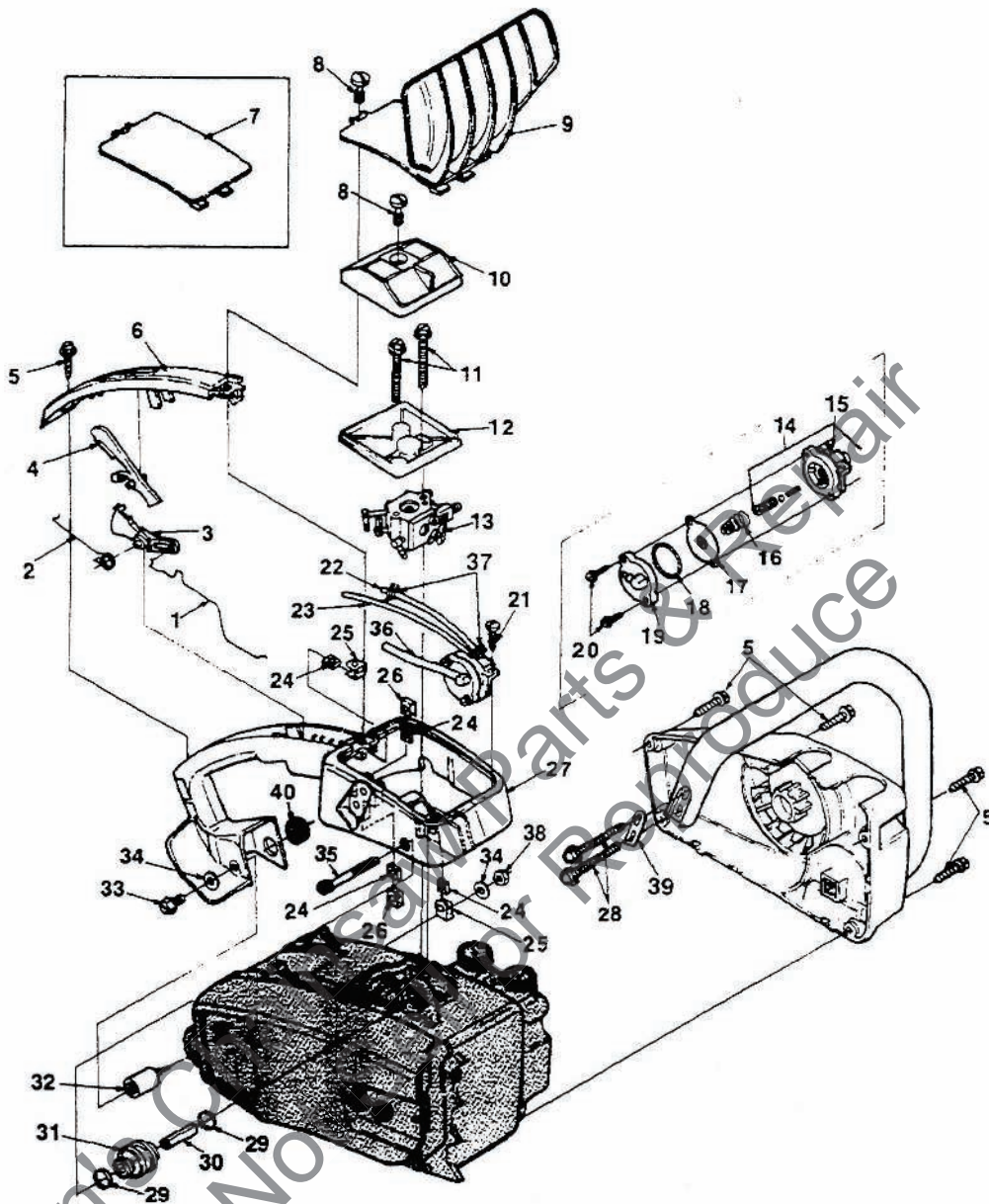


HOMELITE TEXTRON

Homelite Division of Textron Inc

240-HG
240-SL

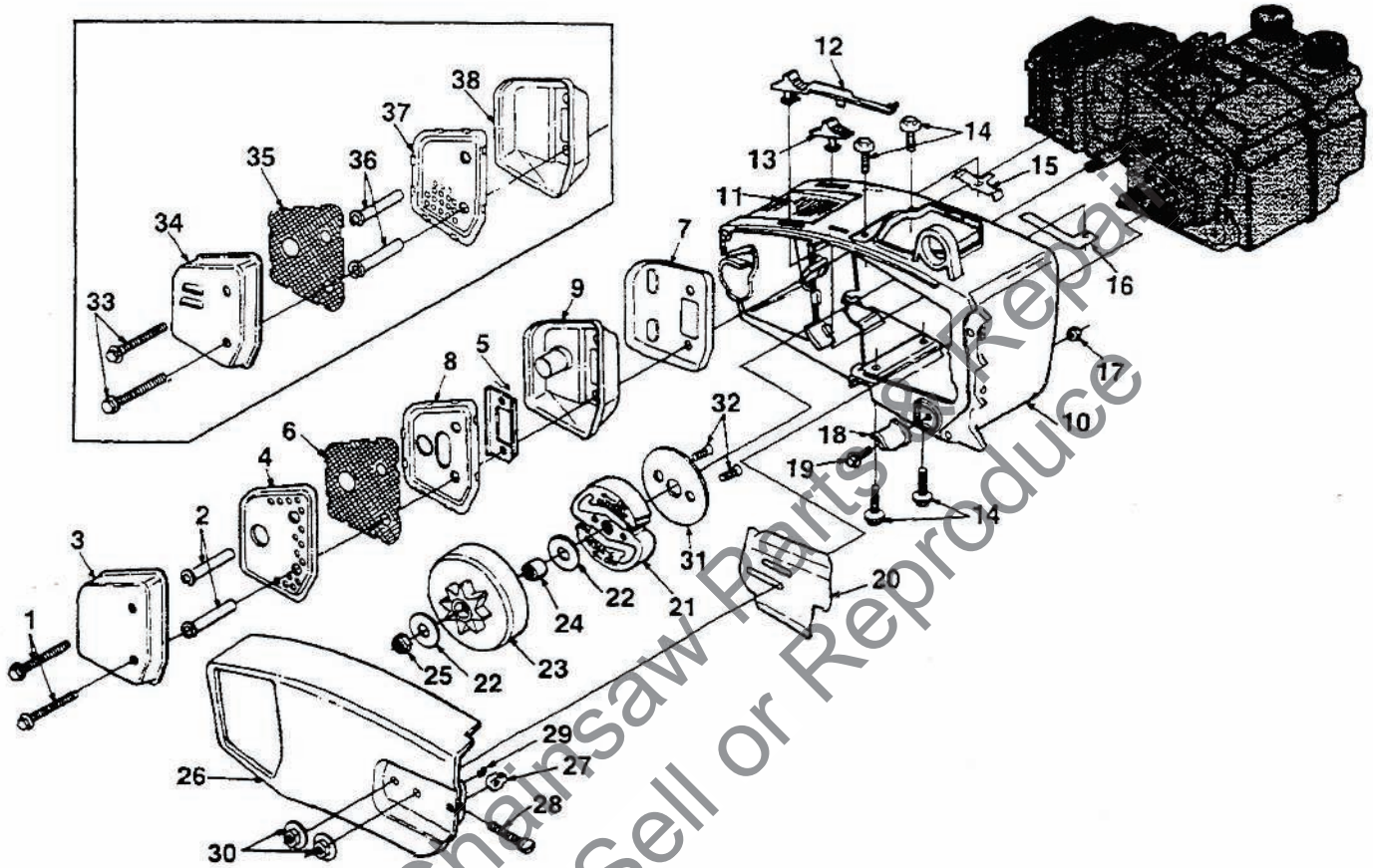
FIGURE 1



NO.	DESCRIPTION	PART NO.	QTY.	NO.	DESCRIPTION	PART NO.	QTY.
1	ROD- Throttle	95036	1	20	SCREW- Plastite #8-16 x 5/8	82380	2
2	SPRING- Torsion	95222	1	21	SCREW- Plastite #10 x 5/8	82312	1
3	TRIGGER- Throttle	95032	1	22	TUBING- (Oil outlet) 7 1/2"	70310-30	1
4	INTERLOCK- Trigger	95038	1	23	TUBING- (Oil inlet) 5"	70310-20	1
5	SCREW- #10 x 3/4	70771	5	24	NUT- Square 10-24	70810	4
6	COVER- Handle	95211	1	25	RETAINER- Nut	95375	2
7	COVER- Air filter (240 SL only)	A-95297	1	26	RETAINER- Nut	95337	2
	Includes:			27	CHAMBER- Carburetor	95069	1
8	SCREW- Retaining	95217	1	28	SCREW- Hex washer (10-24 x 1 1/8)	82218	2
9	GUARD- Hand (w/cover) 240 HG only	A-93573	1	29	RING- Vibration isolator	70432-A	2
	Includes:			30	SPACER	70433	1
	SCREW- Retaining (see #8)	95217	1	31	ISOLATOR	95868	1
10	FILTER ELEMENT- Top	A-96349	1	32	ISOLATOR- Shear	96053	1
	Includes:			33	SCREW- 10-32 x 3/8	80870	1
	SCREW- Retaining (see #8)	95217	1	34	WASHER- Flat #10	84003	2
11	SCREW- Mach. hex 10-24 x 1 5/8	96176	2	35	SCREW- Soc hd. cap (10-24 x 1 5/8)	96818	1
12	CUP- Filter	95083	1	36	LINE- Pulse 3 1/4"	A-96778	1
13	CARBURETOR (Zama C-1S-H4)	A-96352	1		Includes:		
14	BODY- Oil pump	A-95301	1		SPRING (not shown)	95216	2
	Includes:			37	CLAMP- (Oil outlet line)	93426	1
15	FITTING- Tube	69833	2	38	NUT- Lock hex 10-24	81256	1
16	SPRING- Oil pump	69447	1	39	PLATE- Handle bar	96901	1
17	PLUNGER- Oil pump	A-95070	1	40	GROMMET	96210	1
18	"O" RING	96480	1				
19	COVER- Oil pump	94919	1				

240-HG
240-SL

FIGURE 2

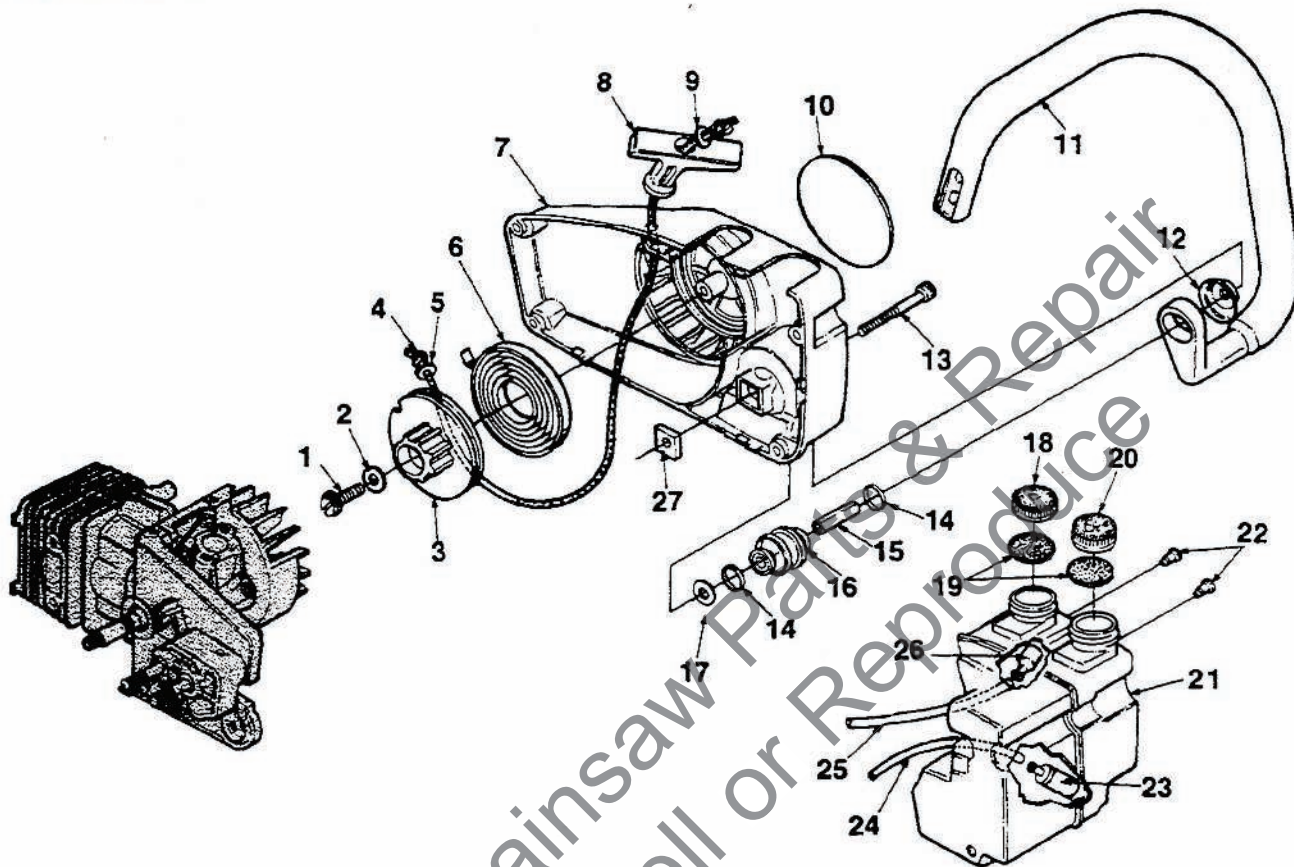


NO.	DESCRIPTION	PART NO.	QTY.	NO.	DESCRIPTION	PART NO.	QTY.
	MUFFLER- Complete (Units After Lot #D200)	A-96931	1	22	WASHER- Thrust	95299	2
	Includes:			23	SPROCKET & DRUM (37/375 chain only) 6T	A-95371	1
1	SCREW	95005	2		SPROCKET & DRUM (325P. 8T)	A-97056	1
2	SPACER- Muffler	93983-08	2		Includes:		
3	CAP- Muffler	94887-1	1	24	BEARING- Needle	68512	1
4	BAFFLE- Muffler	94888-1	1		SPROCKET & DRUM w/bearing (Optional)	A-96522	1
5	PLATE- Muffler	94889	1		Includes:		
6	SCREEN- Spark arrestor	95637-1	1		SPROCKET & DRUM 3/8", 7T	A-95619	1
7	DEFLECTOR- Exhaust	96925	1		BEARING- Needle	64124	1
8	BAFFLE- Muffler	96928	1		RACE- Inner	65746-B	1
9	BODY- Muffler	A-96930	1	25	NUT- Lock 5/16-24	81112	1
10	HOUSING- Engine	A-96754	1	26	COVER- Drivecase	A-93591	1
	Includes:				Includes:		
11	DECAL- Warning	95633	1	27	PIN- Guide bar adjusting	69254-1A	1
12	BUTTON- Choke	95050	1	28	SCREW- Guide bar adjusting	93575	1
13	BUTTON- Stop switch	95086	1	29	"E" RING	93574	1
14	SCREW- Hex sems 10-24 x 5/8	88063	4	30	NUT- Flange 1/4-20	81258	2
15	SPRING- Stop switch	95087	1	31	COVER- Clutch	69915-1	1
16	CONTACT- Stop switch	95091	1	32	SCREW- Flat hd. 10-32 x 1/2	82440	2
17	NUT- Lock 10-24	81256	1	33	SCREW- hex sems 10-24 x 2	88057	2
18	STOP- Chain	95212	1	34	CAP- Muffler	94887	1
19	SCREW- Mach. hex 10-24 x 5/8	82298	1	35	SCREEN- Spark arrestor	95637	1
20	PLATE- Guide bar	95390	1	36	SPACER- Muffler	93983-07	2
21	"S" Clutch	68362-6	1	37	BAFFLE- Muffler	94888	1
				38	BODY- Muffler	94886	1

ALWAYS FURNISH MODEL AND SERIAL NUMBER WHEN ORDERING PARTS

240-HG
240-SL

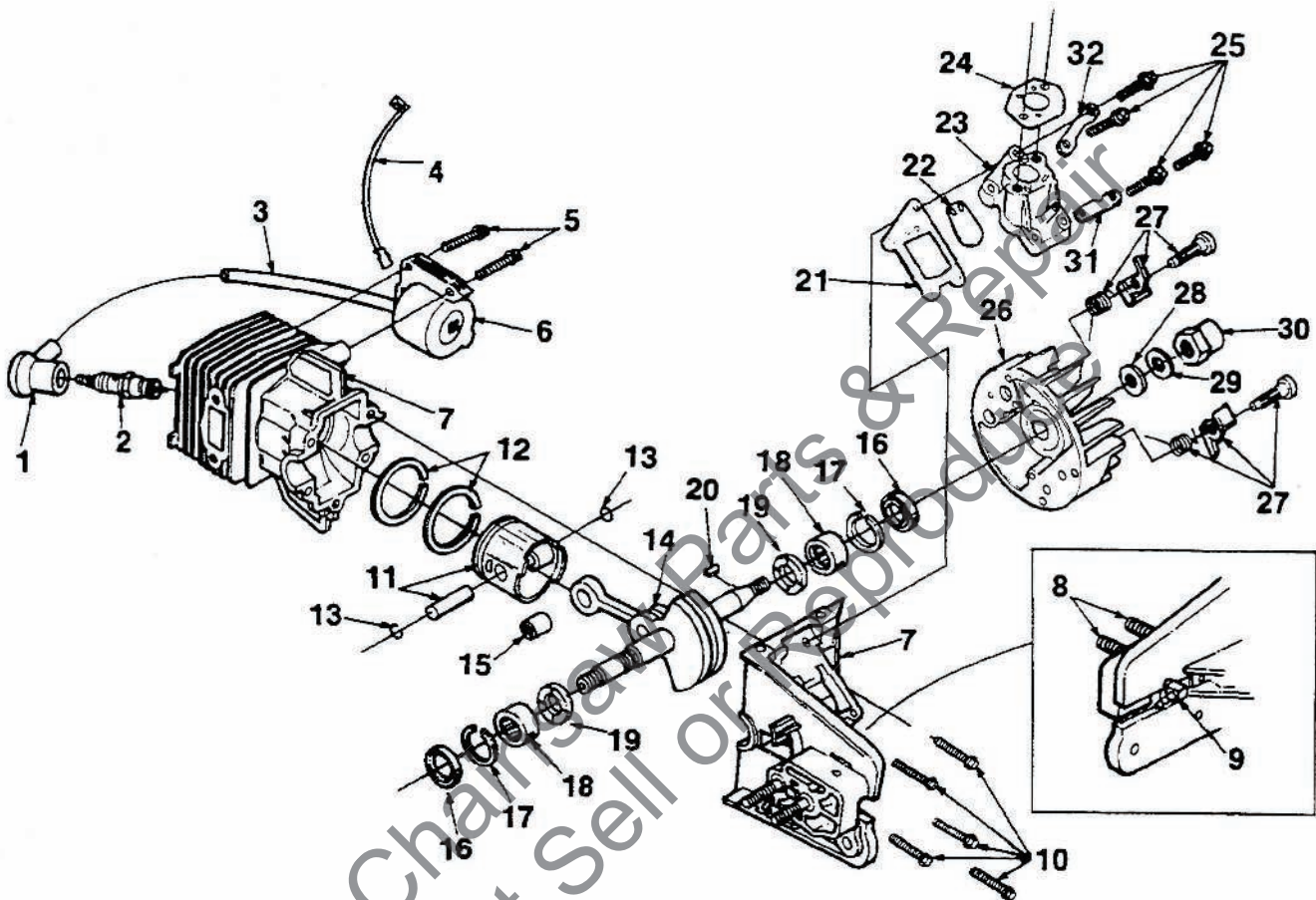
FIGURE 3



NO.	DESCRIPTION	PART NO.	QTY.	NO.	DESCRIPTION	PART NO.	QTY.
1	SCREW- #10 x 3/4	70771	1	18	CAP- Oil	A-96957	1
2	WASHER- Retainer	63606-1	1		Includes:		
3	PULLEY- Starter	69158-A	1	19	GASKET- Filler cap	94494	1
4	ROPE- Starter #4 3/4"	A-93874-A	1	20	CAP- Fuel	A-96936	1
	Includes:				Includes:		
5	WASHER- Nylon	93862	1		GASKET- (See #19)	94494	1
6	SPRING- Rewind	69217	1	21	TANK- Fuel & Oil	A-97141	1
7	HOUSING- Starter	A-95210	1		Includes: Also #18, 19, 20 & 21		
8	GRIP- Starter rope	70211	1	22	VALVE- Check (duck bill)	69451	2
9	WASHER- Flat #8	84025	1		(Note 1)		
10	DECAL- "240"	93571	1	23	FILTER- Fuel	96639	1
11	HANDLE BAR	95931	1	24	TUBING- Fuel 6 1/2"	70310-26	1
12	WASHER- Vibration isolator	70440-A	1	25	TUBING- Oil outlet 7 1/2"	70310-30	1
13	SCREW- Soc. hd. cap (10-24 x 1 5/8)	96818	1	26	FILTER- Oil	A-68593	1
14	RING- Vibration isolator	70432-A	2	27	NUT- Square 10-24	95213	1
15	SPACER	70433	1				
16	ISOLATOR	95868	1				
17	WASHER- Flat	95249	1				

NOTE 1: Item #22 not required in A-97141
Tank - now part of #18 and #20 caps.

FIGURE 4



NO.	DESCRIPTION	PART NO.	QTY.
1	TERMINAL- High tension lead	A-94754	1
2	SPARK PLUG (DJ-7Y)	96169-S	1
3	LEAD- High tension (note 1)	69326	1
4	LEAD- Ground	A-96378	1
5	SCREW- Mach., hex hd 8-32 x 7/8	82430	2
6	MODULE- Ignition		
	(includes items #1 and #3)	94711-1	1
7	CRANKCASE & CYLINDER	A-96753	1
	Includes:		
8	BOLT- Guide bar	96083	2
9	FITTING	50558	1
10	SCREW- 10-24 x 1 1/8	96624	5
11	PISTON & PIN	A-96751	1
	Includes:		
12	PISTON RINGS	94916	2
13	RING- Retaining	65261	2
14	CRANKSHAFT	A-96752	1
	Includes:		
15	BEARING- Needle	95439	1
16	SEAL- Shaft	94638	2

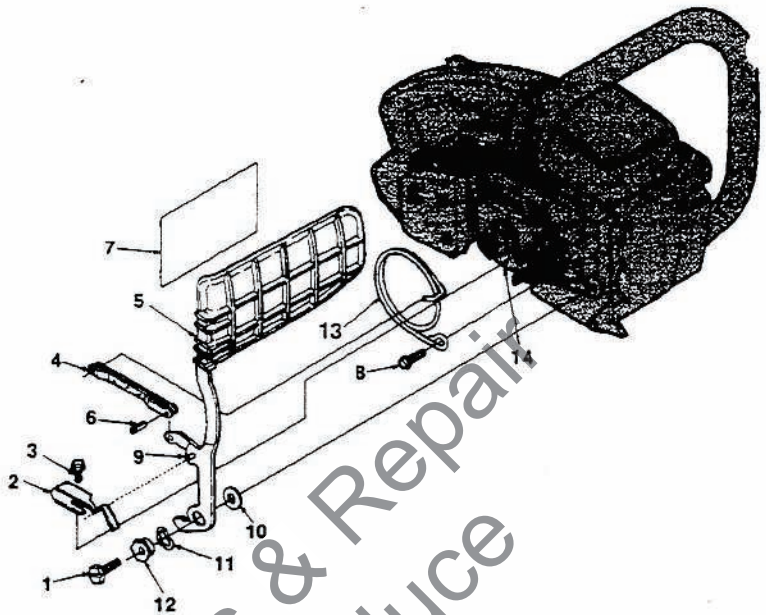
NO.	DESCRIPTION	PART NO.	QTY.
17	RING- Retaining	68514	2
18	BEARING- Needle	12530	2
19	BEARING- Thrust	95492	2
20	KEY- Magneto	69250	1
21	GASKET- Manifold	94873	1
22	REED	95983	1
23	MANIFOLD- Intake	94872-1	1
24	GASKET- Carburetor	95022	1
25	SCREW- Hex washer 8-32 x 5/8	82291	4
26	ROTOR- Magneto	A-95007	1
	Includes:		
27	PAWL- Starter	A-70285-D	1
28	WASHER- Flat 5/16	84065-1	1
29	WASHER- Lock 5/16	83002	1
30	NUT- Guide	96255	1
31	WASHER- Intake manifold	96540	1
32	WASHER- Intake manifold	96539	1

NOTE 1: Cut replacement lead to 6 1/2".

240-SL

CHAIN BRAKE

NO.	DESCRIPTION	PART NO.	QTY.
1	SCREW- Hex cap 1/4-20 x 5/8	80048	1
2	CLIP- Retaining	95406	1
3	SCREW- Hex sems 10-24 x 3/8	88048	1
4	LINK- Pivot	A-70767	1
5	HAND GUARD	A-97179	1
	Includes:		
6	PIN- Roll	95395	1
7	DECAL	96990	1
8	SCREW- Hex sems 10-24 x 5/8	88050	1
9	PIN- Dowel	58429	1
10	WASHER- Thrust	95397	1
11	WASHER- Curved	95486	1
12	CAM- Brake lever	96170	1
13	BAND- Brake	95482	1
14	SPROCKET & DRUM .325P-8T	A-97506	1
	Includes:		
	BEARING (Not shown)	68512	1



TOOLS

SILASTIC (crankcase sealing)	24823
LOCTITE	23488-C
PULLER- Magneto rotor	A-24747-A
Includes:	
BOLT- 5/16-18 x 1 3/4 (1)	80288
NUT- Hex 5/16-18 (2)	81196
WRENCH- Spanner (clutch)	A-93791
Includes:	
PIN- Clutch spanner	23717-A
WRENCH- Combination	A-17705

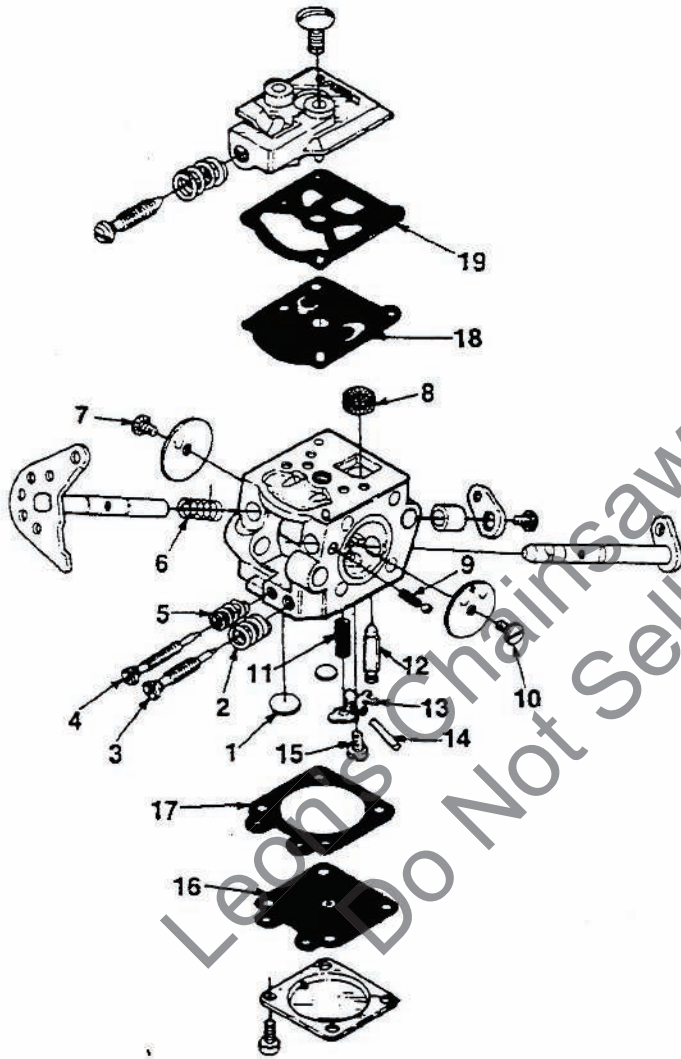
ACCESSORIES

GREASE- Multi use	17193
TUBING- 10 ft. (fuel & oil)	70310-99
SAFE•T•TIP (standard on units)	DA-70776-A
Includes:	
SCREW (special)	93695
TUBING- 10 ft. (pulse line)	95201-99
ROPE- Starter 250 ft. #4	68848
BUMPER- Spiked	A-97046
Includes:	
SCREW- Mach. flat.	80310
SCREW- (10-24 x 1/2)	80672
NUT- Locking hex	81256

CARBURETOR

A-95636

(Walbro #WT-6)

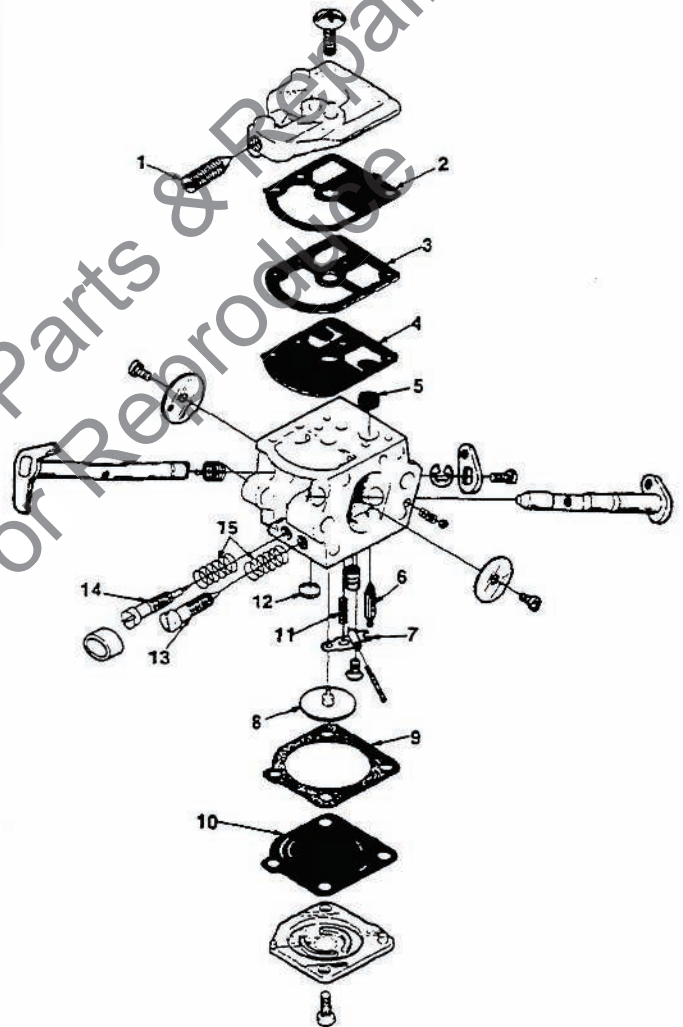


Repair Kit	96986	(Includes items 1-19)
Gasket/Dia-Kit	96944	(Includes items 16-19)
Inlet Needle	96915	(Item #12)

CARBURETOR

A-96352

(Zama C-1S-H4)



Repair Kit	96646	(Items #1-15)
------------	-------	---------------