

Price .25

HOMELITE®

CHAIN SAWS

2100S

PARTS LIST

Leon's Chainsaw Parts & Repair
Do Not Sell or Reproduce



HOMELITE®

A **Textron**
DIVISION

PORT CHESTER, N.Y. U.S.A.

2100S

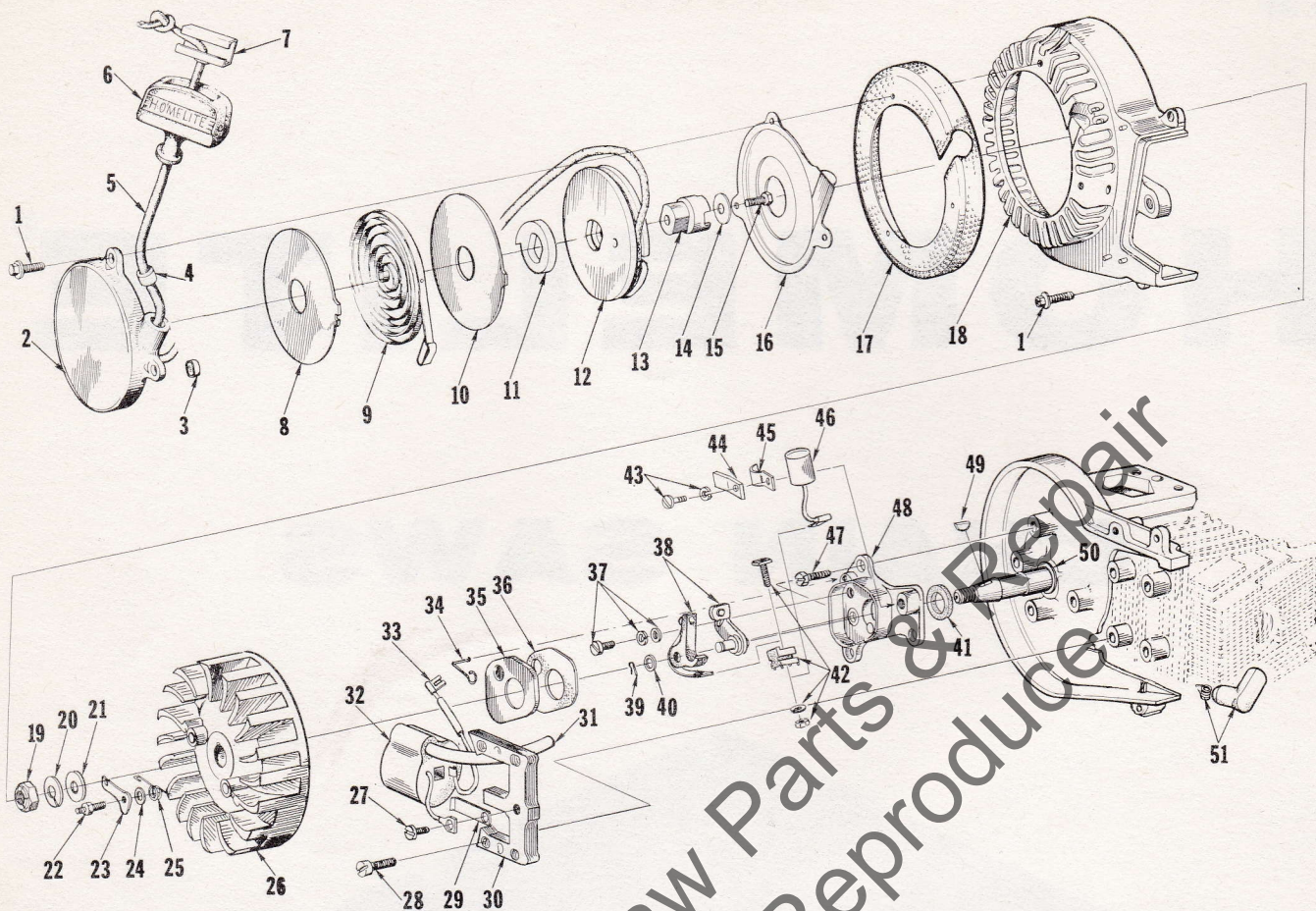


FIGURE 1

No.	Description	Part No.	Qty.	No.	Description	Part No.	Qty.
1	SCREW-hex, 12-24 x 3/4	80867	7	26	ROTOR-magneto	65480	1
2	COVER-starter	A-64178-3	1	27	SCREW-ground lead	64090	1
3	Includes: BUSHING-rewind	65830	1	28	SCREW-coil core	64021	4
4	BUSHING-rope	67177	1	29	SPRING-coil wedge	63726	1
5	ROPE-starter	58806	1	30	CORE-coil	67515	1
6	GRIP-starter rope	55937	1	31	LEAD-hi-tension	67514	1
7	INSERT-rope retaining	58517	1	32	COIL	67516	1
8	SHIELD-spring (inner)	65711	1	33	LEAD-ground	A-59031	1
9	SPRING-rewind	64180-A	1	34	SPRING-cover	76413	1
10	SHIELD-spring (outer)	65712	1	35	COVER-breaker box	65370	1
11	LOCK-spring	64049-A	1	36	GASKET-cover	65369	1
12	PULLEY-starter	64050-1	1	37	SCREW GROUP-points	76421	1
13	CUP-starter	64979-1	1	38	POINTS-breaker	A-67513	1
14	WASHER-flat	58763	1	39	Includes: SPRING-lock	28008	1
15	SCREW-hex, spinlock	80648	1	40	WASHER-point	28028	1
16	SHIELD-sawdust	64052	1	41	FELT-sealing	65371	1
17	SCREEN-fan housing	64843-2	1	42	TERMINAL BLOCK GROUP	A-58934	1
18	HOUSING-fan	A-64975-1	1	43	SCREW GROUP-condenser	30261	1
19	NUT-rotor	65373-1	1	44	CLIP-cover	67449	1
20	WASHER-lock, 7/16	83019	1	45	CLAMP-condenser	74514	1
21	WASHER-flat, 7/16	84047	1	46	CONDENSER	63626	1
22	STUD-shoulder	58757-B	2	47	SCREW-hex, 12-24 x 9/16	80899	3
23	PAWL-starter	58756	2	48	BOX-breaker	67512	1
24	WASHER-flat	58851	2	49	KEY-woodruff	75078	1
25	SPRING-starter pawl	65375	2	50	WASHER-retaining	65372	1
				51	TERMINAL-spark plug	A-33055	1

2100S

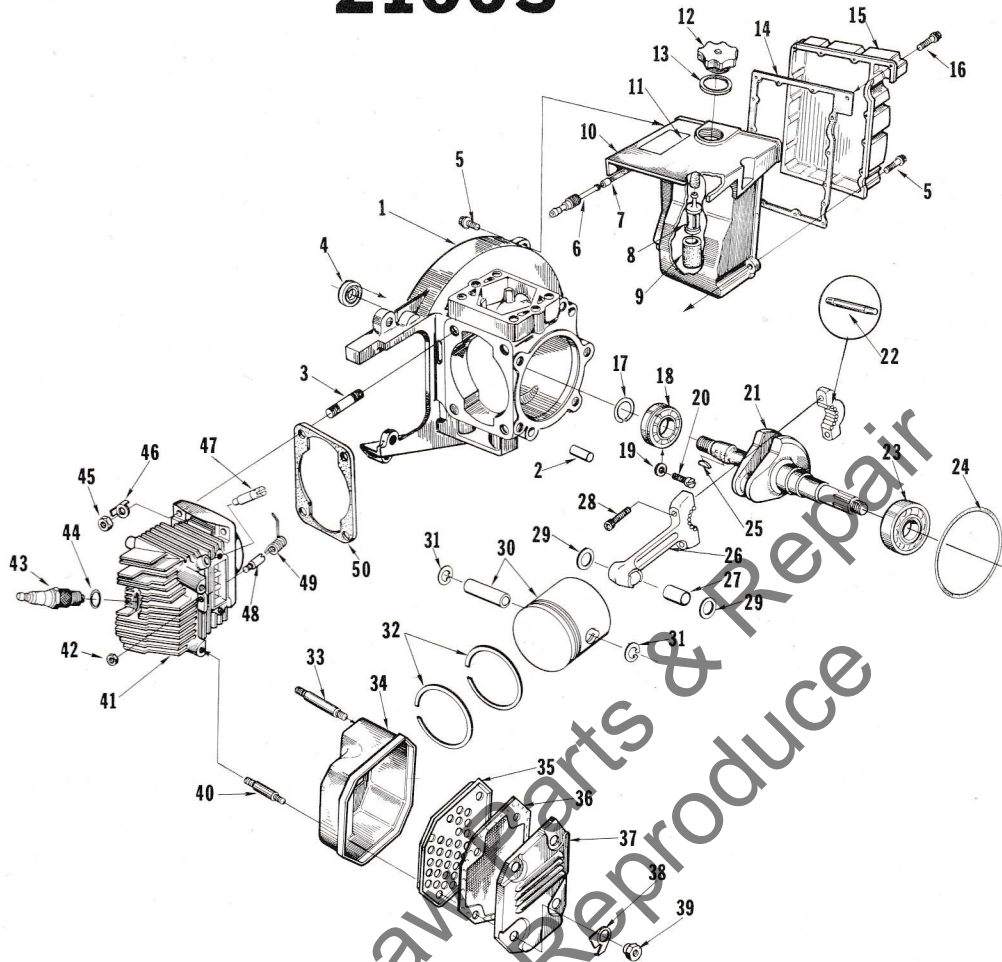


FIGURE 2

No.	Description	Part No.	Qty.	No.	Description	Part No.	Qty.
1	CRANKCASE	A-67468-A	1	*26	ROD-connecting	A-67715	1
2	Includes: PIN-dowel	74332	2	27	Includes: BEARING-needle	55664	1
3	STUD-cylinder	72787-1	4	28	SCREW-soc. cap, 10-32 x 3/4	82157	2
4	SEAL	58308-A	1	29	WASHER-thrust	67673	2
5	SCREW-hex, 12-24 x 3/4	80867	4	*30	PISTON & PIN	A-68102	1
6	FITTING-fuel outlet	58364	1	31	Includes: RING-piston pin retaining	64969	2
7	LINE-flexible	55805	1	32	PISTON RING	64968	2
8	FILTER-fuel	A-59251	1	33	STUD-muffler (long)	65419	2
9	Includes: FILTER-felt	59253-1	1	34	BODY-muffler	A-65458-1	1
10	TANK-fuel	58172-4	1	35	BAFFLE-muffler	65459	1
11	DECAL-caution	64144	1	36	ARRESTER-spark	A-65583	1
12	CAP-fuel tank	A-64140-1	1	37	CAP-muffler	65460-1	1
13	Includes: GASKET	65358	1	38	WASHER-tab lock	65579-1	4
	VALVE-vent (not shown)	63718	1	39	NUT-hex, 1/4-20	65549	4
14	GASKET-fuel tank	58367	1	40	STUD-muffler (short)	64429	2
15	COVER-fuel tank	59920-2	1	*41	CYLINDER	A-67744-2	1
16	SCREW-rd., #6 x 1/2	80513	15	42	NUT-flexlock, 6-32	81126	1
17	RING-retaining	58319-A	1	43	SPARK PLUG	63547-S	1
18	BEARING-ball	58190-S	1	44	Includes: GASKET	25038	1
19	WASHER-lock	83061	2	45	NUT-hex, 5/16-24	25412	4
20	SCREW-bearing retaining	19238-3	2	46	WASHER-tab lock	65367-1	4
*21	CRANKSHAFT	A-67588	1	47	VALVE-compression release	A-67465	1
22	ROLLER-needle (set of 26)	A-64960	1	48	POST-spring	65453	1
23	BEARING-ball	64958-S	1	49	SPRING-release valve	65454	1
24	"O" RING	68072	1	50	GASKET-cylinder	67022	2
25	KEY-woodruff	75078	1				

Accessory

MUFFLER KIT	A-67689
Includes:	A-67014-1 CAP ASSY. 1
	65806 NUT 4

Remove index #37 & #39 on Figure 2 and #32 on Figure 3

* Denotes new parts

2100S

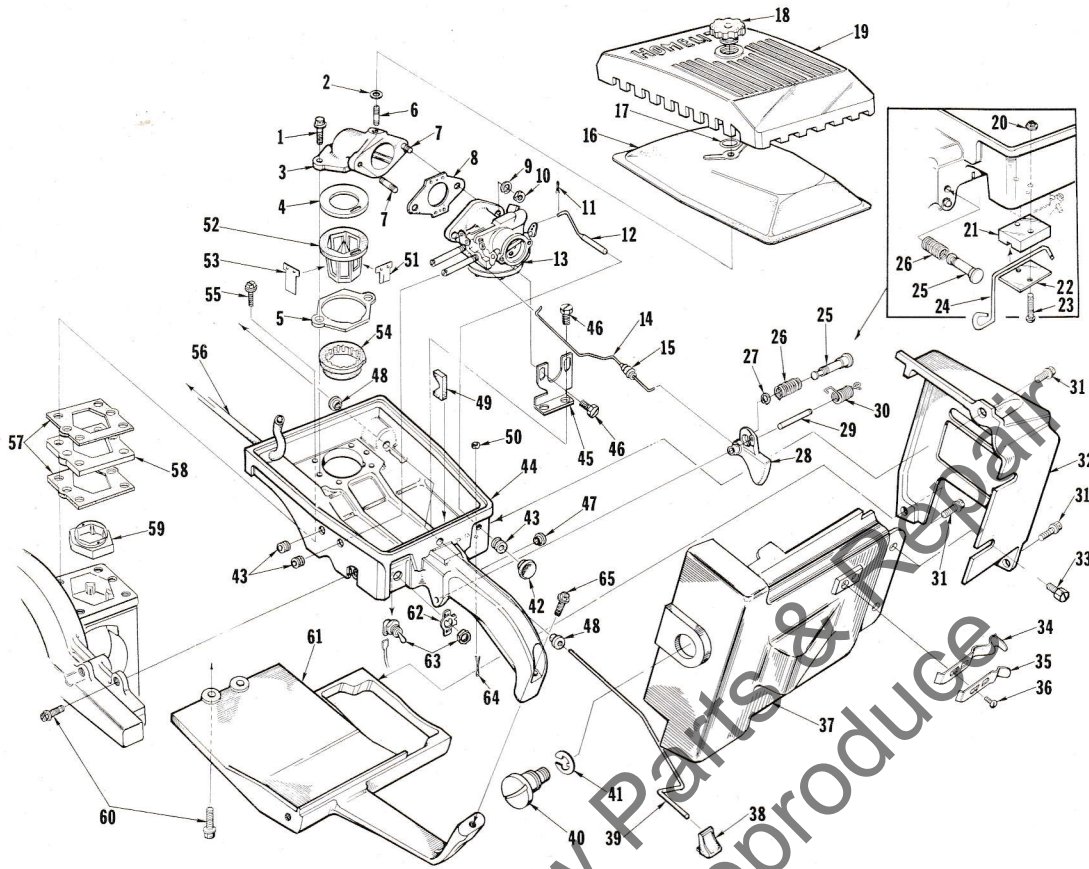


FIGURE 3

No.	Description	Part No.	Qty.	No.	Description	Part No.	Qty.
1	SCREW-hex, 12-24 x 1-1/4	80994	2	33	SCREW-hex, 10-32 x 5/16	82175	2
2	GASKET-mounting nut	58392	1	34	CLAMP-upper	65754-1	1
3	MANIFOLD-intake	A-65945-B	1	35	CLAMP-lower	65755-1	1
4	Includes: GASKET-manifold	67121	1	36	SCREW-pan, 6-32 x 1/4	82159	2
5	GASKET-reed retainer	65903	1	*37	SHIELD-cylinder	A-68121	1
6	STUD-cover mounting	58361	1	38	BUTTON-oil pump	58357	1
7	STUD-carburetor mounting	27464	2	39	ROD-oil pump	58356-B	1
8	GASKET-carburetor	63655-A	1	*40	SCREW-cylinder shield mounting	68096	1
9	WASHER-lock, 1/4	83009	2	*41	RING-retaining	68095	1
10	NUT-hex, 1/4-20	81013-1	2	42	BUTTON-choke	57289-1	1
11	PIN-cotter	86824	1	43	GROMMET	58362	3
12	ROD-choke	A-58854	1	44	HANDLE-throttle	A-65750-A	1
13	CARBURETOR	A-67130	1	45	Includes: BRACKET-carburetor	67208-1	1
14	ROD-throttle	59338	1	46	SCREW-hex, 10-32 x 5/16	82175	4
15	BOOT-throttle rod	58348	1	47	BUSHING-throttle lock	59064	1
16	FILTER ELEMENT-air	63728	1	48	BUSHING-oil pump rod	58929	2
17	RING-retaining	58319-A	1	49	STOP-pump rod	58930	1
18	NUT-cover mounting	A-59229	1	50	WASHER-felt	63290	1
19	COVER-air filter	59230-1	1	51	REED-split	67107-A	1
20	NUT-flexlock, 6-32	81126	2	52	SEAT-reed valve	64833-1	1
21	GUIDE-lever	65463-1	1	53	REED	63166-A	5
22	PLATE-lever guide	64985-1	1	54	RETAINER-reed	64834	1
23	SCREW-fil, 6-32 x 5/8	80461-1	2	55	SCREW-hex, 12-24 x 1	80864	4
24	LEVER-compression release	64984-A	1	56	LINE-fuel	55680	1
25	PIN-throttle lock	58404	1	57	GASKET-carburetor chamber	64841	2
26	SPRING-lock pin	58405	1	58	SPACER	64840	1
27	RING-retaining	58409	1	59	BLOCK-filler	67117	1
28	TRIGGER-throttle	58181-A	1	60	SCREW-hex, 12-24 x 3/4	80867	3
29	SHAFT-trigger	58353	1	*61	BRACE-throttle handle	64837-4	1
30	SPRING-trigger	58352-A	1	62	PLATE-indicating	72085-A	1
31	SCREW-hex, 12-24 x 5/8	80676	3	63	SWITCH-toggle w/nut	A-57650-3	1
32	SHIELD-muffler	64836-2	1	64	PIN-cotter	86301	1
				65	SCREW-hex, 1/4-20 x 1-1/4	80912	1

Accessory

A-67608 HEAT EXCHANGER KIT available at your HOMELITE dealer.

* Denotes new parts

2100S

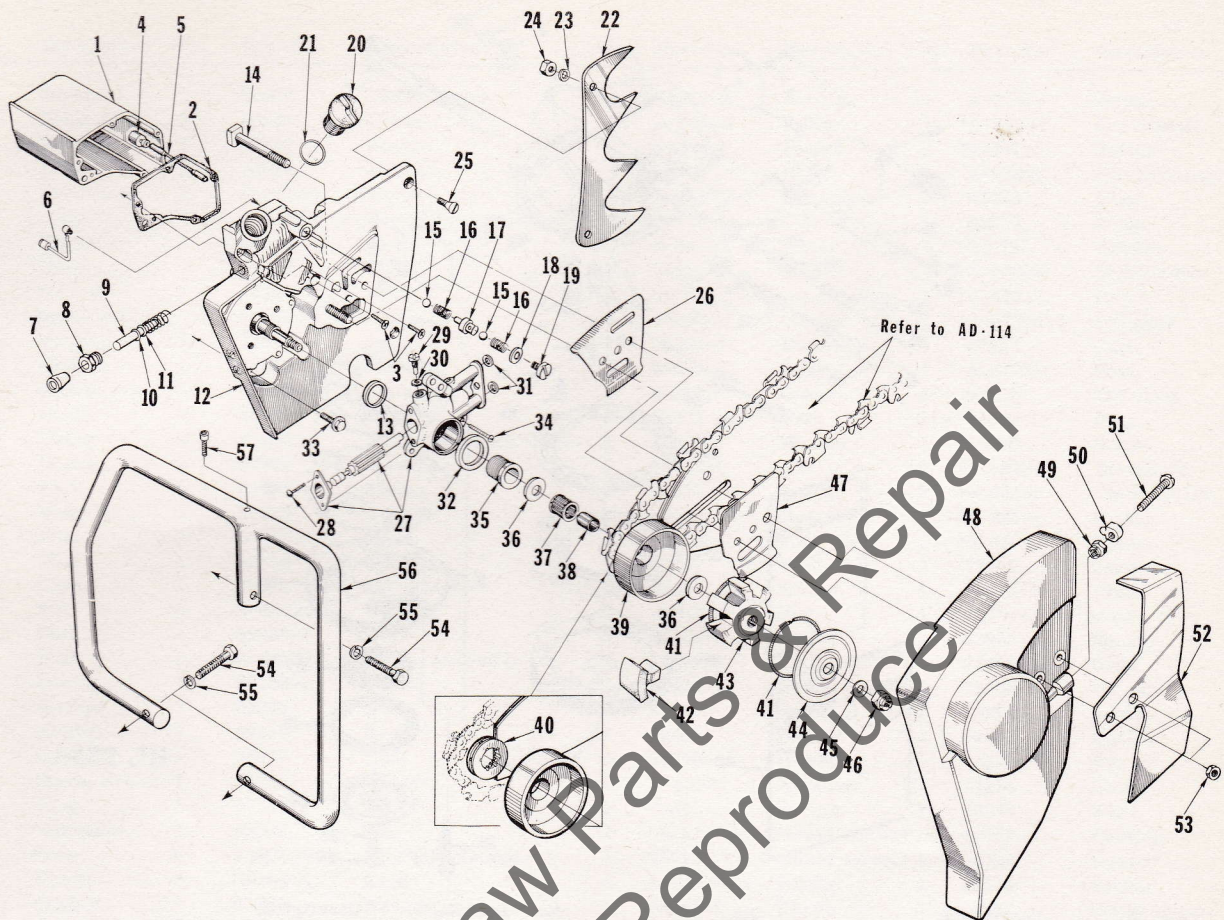


FIGURE 4

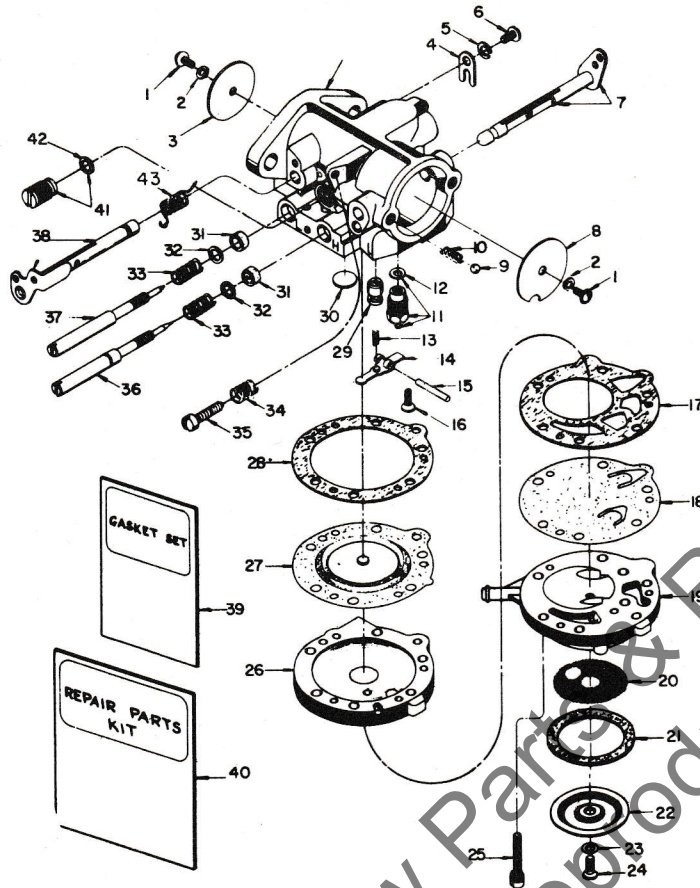
No.	Description	Part No.	Qty.	No.	Description	Part No.	Qty.
1	RESERVOIR-oil	A-58341-A	1				
2	Includes: GASKET-oil reservoir	67122	1	28	PUMP-automatic oil (short stroke-optional)	A-64073-A	1
3	SCREW-fil, 8-32 x 3/4	82156	5		Includes: SCREW-pan, 4-40 x 1/4	80919	2
	PIN-cotter (not shown)	86301	1	29	SCREW-cam	64102-A	1
4	FILTER-oil	A-64293	1	30	GASKET-cam screw	59736	1
5	LINE-oil pickup	59674	1	31	"O" RING	59074	2
6	LINE-oil pickup	A-64010	1	32	SEAL-felt	59926	1
7	CONNECTOR-pump rod	67118	1	*33	SCREW-hex, 1/4-20 x 13/16	82201	5
8	NUT-plunger rod	67128	1	34	SCREW-pan, 8-32 x 1/2	80560	3
*9	PUMP-manual	A-68061-A	1	35	WORM-oil pump	63893	1
10	Includes: "O" RING	59074	1	36	WASHER-thrust	56132	2
11	"O" RING	58406	1	37	BEARING-needle caged	65393	1
*12	DRIVECASE	A-68100	1	38	RACE-inner	65348	1
	Includes: TUBE-oil (not shown)	59023	1	39	DRUM & HUB	A-67239	1
13	SEAL	56256-A	1	40	SPROCKET-spline, .404 pitch, 8 tooth	65960	1
14	BOLT-guide bar	58334	2		optional-1/2 pitch, 6 tooth	67017	1
15	BALL-steel	25527	2	41	SPRING-clutch	67441	2
16	SPRING-check valve	59022	2	42	SHOE-clutch	55076-6	6
17	SEAT-valve	A-67959	1	*43	SPIDER-clutch	67591-1	1
	Includes: "O" RING (not shown)	58406	1	*44	COVER-clutch	67120-A	1
18	GASKET-valve cap	67123	1	45	WASHER-flat	64027	1
19	CAP-check valve	67958	1	46	NUT-hex, 3/8-24	81192	1
20	CAP-oil filler (vented)	A-63717-A	1	47	PLATE-guide bar (outer)	67670	1
	Includes: VALVE-vent (not shown)	63718	1	48	COVER-drivecase	A-64074-1A	1
21	GASKET	56607	1	49	Includes: NUT-hex, 5/16-18	81123	1
22	KIT-spiked bumper (western)	A-63089	1	50	PIN-adjusting	55613-1	1
	KIT-spiked bumper (eastern)	A-58543	1	51	SCREW-rd., 5/16-18 x 2	80617	1
23	Includes: WASHER-lock, 1/4	83009	2	52	PLATE-guard	64029-2	1
24	NUT-hex, 1/4-20	81053	2	53	NUT-hex, 3/8-16	81089-2	2
25	SCREW-flat, 1/4-20 x 3/4	80053	2	54	SCREW-hex, 5/16-18 x 1-1/2	80087	3
26	PLATE-guide bar (inner)	67669	1	55	WASHER-lock, 5/16	83003	3
27	PUMP-automatic oil (long stroke)	A-67579	1	56	HANDLE BAR-wrap around	A-67250-1	1
					HANDLE BAR-flush cut (optional)	A-67268-1	1
				57	Includes: SCREW-socket, 5/16-18 x 1	80308	1

Accessory

A-67511 Drivecase Cover Kit (extended) available from your Homelite dealer.

* Denotes new parts

2100S



HL 273A

No.	Part No.	Description	Qty.	No.	Part No.	Description	Qty.
1	80591	† SCREW-rd., 4-40 x 1/4	2	22	58526	COVER-strainer	1
2	83008-1	† WASHER-lock	2	23	28098	GASKET-strainer cover screw	1
3	67478	SHUTTER-throttle	1	24	58525	† SCREW-pump cover	1
4	73086	CLIP-throttle shaft	1	25	55316	SCREW-body w/lockwasher	6
5	83000	WASHER-lock, #8	1	26	A-58533	COVER-main diaphragm	1
6	73088	SCREW-flat hd., 8-32 x 5/16	1	27	57829	† DIAPHRAGM-main control	1
7	A-64627	SHAFT & LEVER-choke	1	28	57824	GASKET-cover diaphragm	1
8	64625	SHUTTER-choke	1	29	A-67479	NOZZLE-main	1
9	25527	BALL-check, 5/32" diameter	2	30	30818	† PLUG-expansion	1
10	73264	SPRING-choke friction	1	31	75733	PACKING-adjusting screw	2
11	A-64628	† NEEDLE & SEAT	1	32	75735	WASHER-adjusting screw	2
12	55344	GASKET-inlet seat	1	33	73075	† SPRING-adjusting needle	2
13	65603	† SPRING-control lever	1	34	28064	† SPRING-throttle stop	1
14	55747	† LEVER-inlet control	1	35	71509	† SCREW-idle stop	1
15	64622	† PIN-fulcrum	1	36	67477	† NEEDLE-adjusting (main mixture)	1
16	58992	† SCREW-fulcrum pin retaining	1	37	58680	† VALVE-needle (idle mixture)	1
17	58529	GASKET-pump diaphragm	1	38	A-67480	SHAFT & LEVER-throttle	1
18	57729	† DIAPHRAGM-fuel pump	1	39	64629	† GASKET & PACKING SET	1
19	59265	BODY-fuel pump	1	40	67524	REPAIR PARTS KIT	1
20	58527	† SCREEN-fuel inlet	1	41	A-65891	VALVE-governor	1
21	55751	GASKET-pump strainer	1	42	74060	GASKET	1
				43	64624	SPRING-throttle return	1

Tools

22820-2	COLLAR-main bearing installation
23136-2	SLEEVE-bearing and shaft installation
A-23137	JACKSCREW-clutch
24357-1	PLUG-seal assembling (crankcase)
23373-4	COLLAR-bearing installation
23382	SPACER-crankshaft assembling
23384	PLUG-seal installation (drivecase)
23390	SLEEVE-crankshaft assembling
23528	WRENCH-socket screw (conn. rod)
23671	PLUG-seal assembling (drivecase)
A-23672	JACKSCREW-magneto
A-24284	WRENCH-combination
A-23960	PULLER-magneto rotor (use with 2 pcs. 81109-2 NUT)
A-24138	REAMER-valve seat
24397-1	PLUG-bearing installation (conn. rod)
24207-1A	PLATE-crankshaft aligning

† Indicates contents of Repair Parts Kit

Decal

23742 (universal replacement) composed of "Direct Drive", "Gear Drive", "Starting Instructions", and two "Homelite" (letters 1/4" and 1/2" high)

Paint

23475 SPRAY CAN-red
22772 SPRAY CAN-black

20015

Leon's Chainsaw Parts & Repair
Do Not Sell or Reproduce

370

Part No. 24423

HOMELITE®

A **Textron**
DIVISION

PORT CHESTER, N.Y. U.S.A.

PRINTED IN U.S.A.