

# HOMELITE®

- ⓐ PARTS LIST
- ⓑ LISTE DE PIÈCES
- Ⓓ TEILELISTE
- Ⓔ LISTA DE PIEZAS
- ⓐ ELENCO DELLE PARTI

**200 CHAIN SAW**  
**SCIE A CHAINE 200**  
**MOTORSAGE 200**  
**MOTOSIERRA 200**  
**MOTOSEGA 200**



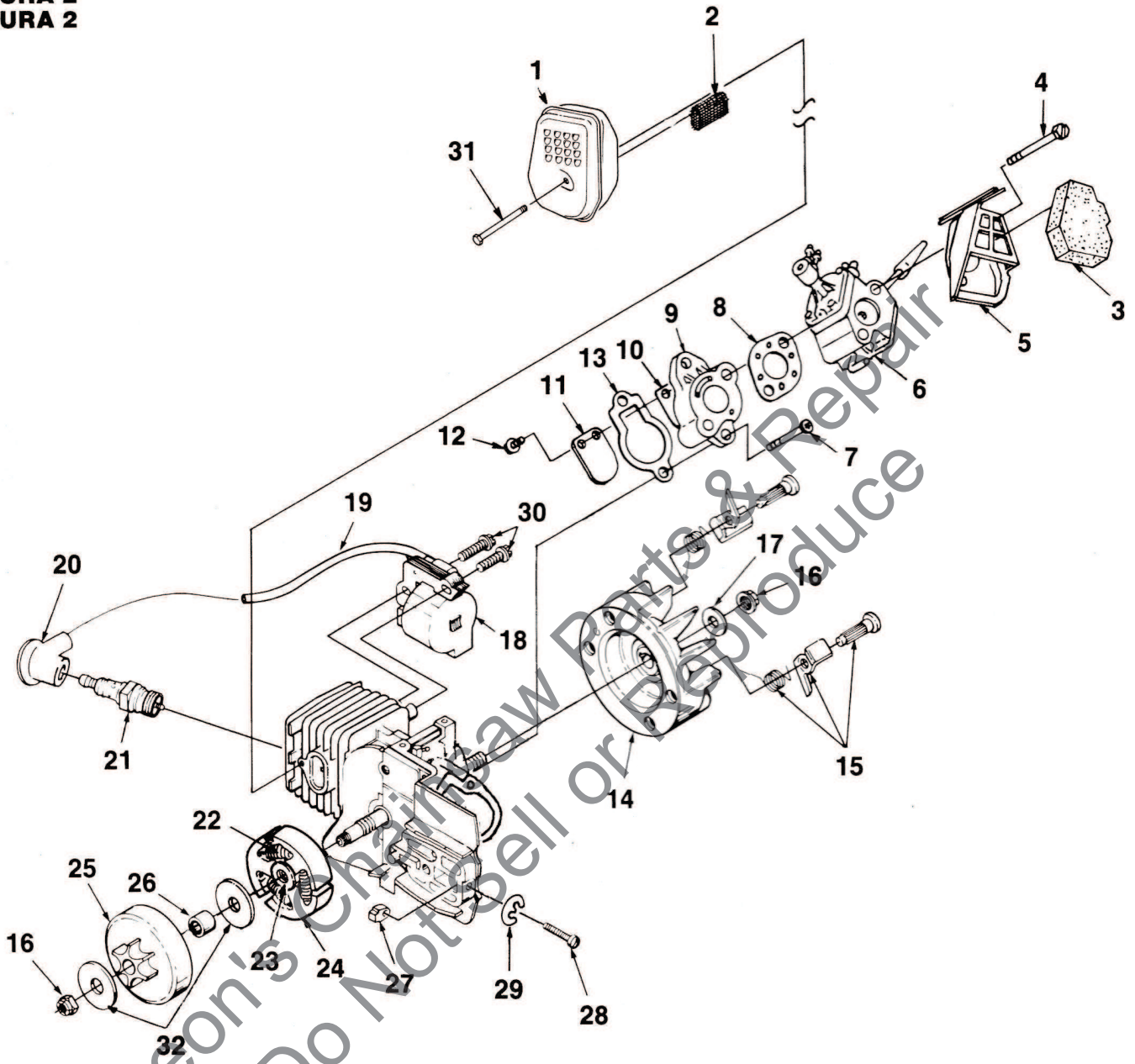
Printed in U.S.A.  
Imprimé aux E.-U.  
Gedruckt in U.S.A.  
Impreso en EE.UU.  
Stampato negli Stati Uniti  
P/N 18548



No. No. Nr. No. Nº	Part Number No. de Pièce Best.—Nr. No. de Pieza Pezzo N°	Description	Qty. Qté Menge Cant. Qta
1	● A-03058	HOUSING- Engine	1
2	02640	TAPE	1
3	02490	DECAL	1
	03271	DECAL	1
		(International Only)	
4	94065	SCREW- Pan, plastite (#10-16 x 3/4")	4
5	02495	COVER- Handle	1
6	82528	SCREW- Pan plastite (#6-3/8")	4
7	02501	ROD- Throttle	1
8	02481	COVER- Air filter	1
9	02492	TRIGGER	1
10	02493	LOCK- Trigger	1
11	95212	STOP- Chain	1
12	82538	SCREW- Torx, taptite (#10-24 x 3/4")	4
13	02487	PRIMER BULB	1
14	01439-12	TUBING- Inlet (3")	1
15	70310-20	TUBING- Return (5")	1
16	69360-A	PLATE- Guide bar	1
17	69309-A	WASHER- Flat	1
18	81065-2	NUT- Hex	1
19	02765	SHIELD- Muffler	1
20	02496	HANDLE BAR	1
21	● A-02763	TANK- Oil	1
22	70310-36	TUBING- (9")	1
23	70310-19	TUBING	1
24	A-68593	FINDER- Oil	1
25	98819	VALVE- Check	1
26	69659-B	FITTING- Oil line	1
27	● A-97230-A	CAP-Oil	1
28	94494	GASKET- Cap	1
29	● A-02764	TANK- Fuel	1
30	49422	FILTER- Fuel	1
31	70310-22	LINE- Fuel	1
32	98819	VALVE- Check	1
33	● A-97230-A	CAP- Fuel	1
34	94494	GASKET- Cap	1
35	● A-02562-A	STARTER HOUSING ASSY.	1
36	69443	FILTER	1
37	02264	GRIP- Starter	1
	82563	SCREW- Torx, plastite (#10 x 3/4")	6
39	A-97908	SPRING & CONTAINER	1
40	97899	ROPE- Starter	1
41	97768-A	PULLEY- Starter	1
42	94062	WASHER- Retaining	1
43	02497	SWITCH	1
44	A-02482	LEAD- w/Flag Term.	1
45	A-02484	LEAD- w/Ring Term.	1

- Assemblies
- Ensemble
- Bausätze
- Complessi
- Conjunto

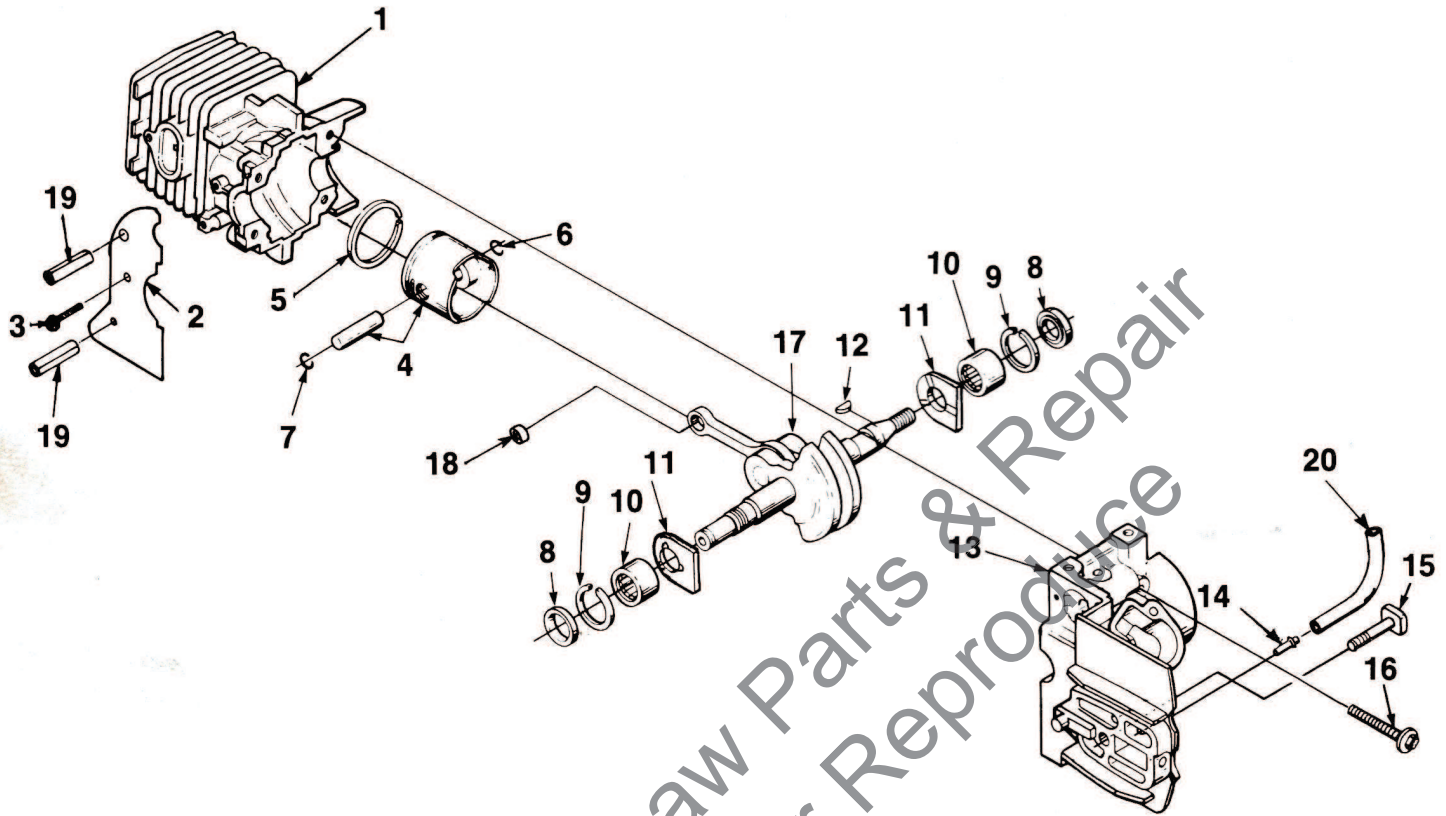
FIGURE 2  
FIGURE 2  
ABBILDUNG 2  
FIGURA 2  
FIGURA 2



No. No. Nr. No. N°	Part Number No. de Pièce Best.—Nr. No. de Pieza Pezzo N°	Description	Qty. Qté Menge Cant. Qtà
1	A-02459	MUFFLER	1
2	02458	SCREEN- Spark arrestor	1
3	02500	FILTER- Air	1
4	82578	SCREW- Shoulder plastite (#10-24 x 1 3/4")	2
5	02491	BOX- Air filter	1
6	A-02486	CARBURETOR & OIL PUMP ASSY.	1
7	82549	SCREW- Torx taptite, thd. forming (10-24 x 1")	2
8	02488	GASKET- Carburetor	1
9	● A-02499	HEAT DAM	1
10	95983	REED	1
11	03205	STOP- Reed	1
12	82498	SCREW- Hex Taptite (4-40 x 3/8")	2
13	02453	GASKET- Intake manifold	1
14	● A-95007	ROTOR & STARTER PAWL	1
15	A-70285-E	KIT- Starter pawl	1
16	81229	NUT- (5/16-24)	2
17	84065	WASHER- (5/16")	1
18	● 94711-BS	MODULE	1
19	69326	LEAD- Hi-Tension	1
20	A-33055	TERMINAL	1
21	96169-S	SPARK PLUG (Champion DJ7Y)	1
	79252	SPARK PLUG (Champion RDJ7Y) (International Only)	1
22	98066	SPRING- Clutch	3
23	79221	SPIDER- Clutch	1
24	79222-A	SHOE- Clutch	3
25	● A-95653-C	SPROCKET & DRUM	1
26	70277	BEARING	1
27	69254-2	PIN- Adjusting	1
28	● A-00440	SCREW & E-RING KIT	1
29	93574	E-RING	1
30	82248	SCREW- Machine hex sems (#8-32 x 3/4")	2
31	93460	SCREW- Machine hex sems (10-24 x 1 7/8")	1
32	95299	WASHER- Thrust	2

- Assemblies
- Ensemble
- Bausätze
- Complessi
- Conjunto

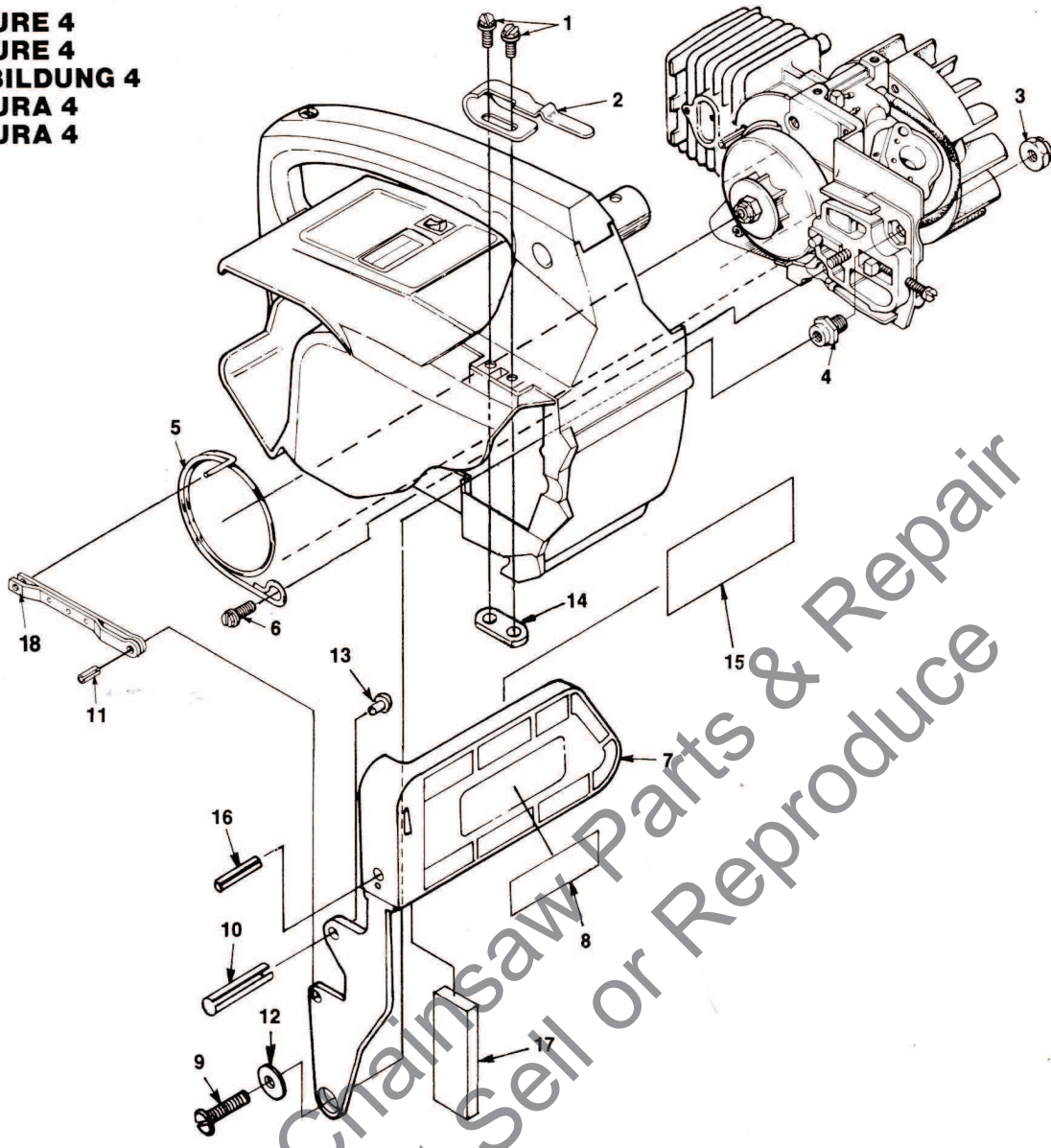
FIGURE 3  
 FIGURE 3  
 ABBILDUNG 3  
 FIGURA 3  
 FIGURA 3



No. No. Nr. No. N°	Part Number No. de Piéce Best.-Nr. No. de Pieza Pezzo N°	Description	Qty. Qté Menge Cant. Qtá
1	02485-2	CYLINDER	1
2	02639	SHIELD- Sawdust	1
3	93932	SCREW- Tapping (#6-32 x 5/16")	1
4	● A-98967-A	PISTON & PIN ASSY.	1
5	93165	RING- Piston	1
6	65261	RING- Retaining	1
7	98096	RING- Retaining	1
8	94638	SEAL	2
9	69407	SPACER	2
10	12530	BEARING- Needle	2
11	02464	WASHER- Thrust	2
12	69250	KEY	1
13	● A-03060	CRANKCASE ASSY.	1
14	94619	FITTING	1
15	69195	BOLT- Guide bar, thd. forming	1
16	82567	SCREW- Torx pan hd. (10-24 x 1 1/8")	4
17	● A-03059	CRANKSHAFT ASSY.	1
18	02035	BEARING	1
19	70763	PIN- Roll (5/32 x 1 1/8") (Brake Mod. Only)	2
20	70309-17	TUBING- Rubber (Oil line) (4 1/4")	1

- Assemblies
- Ensemble
- Bausätze
- Complessi
- Conjunto

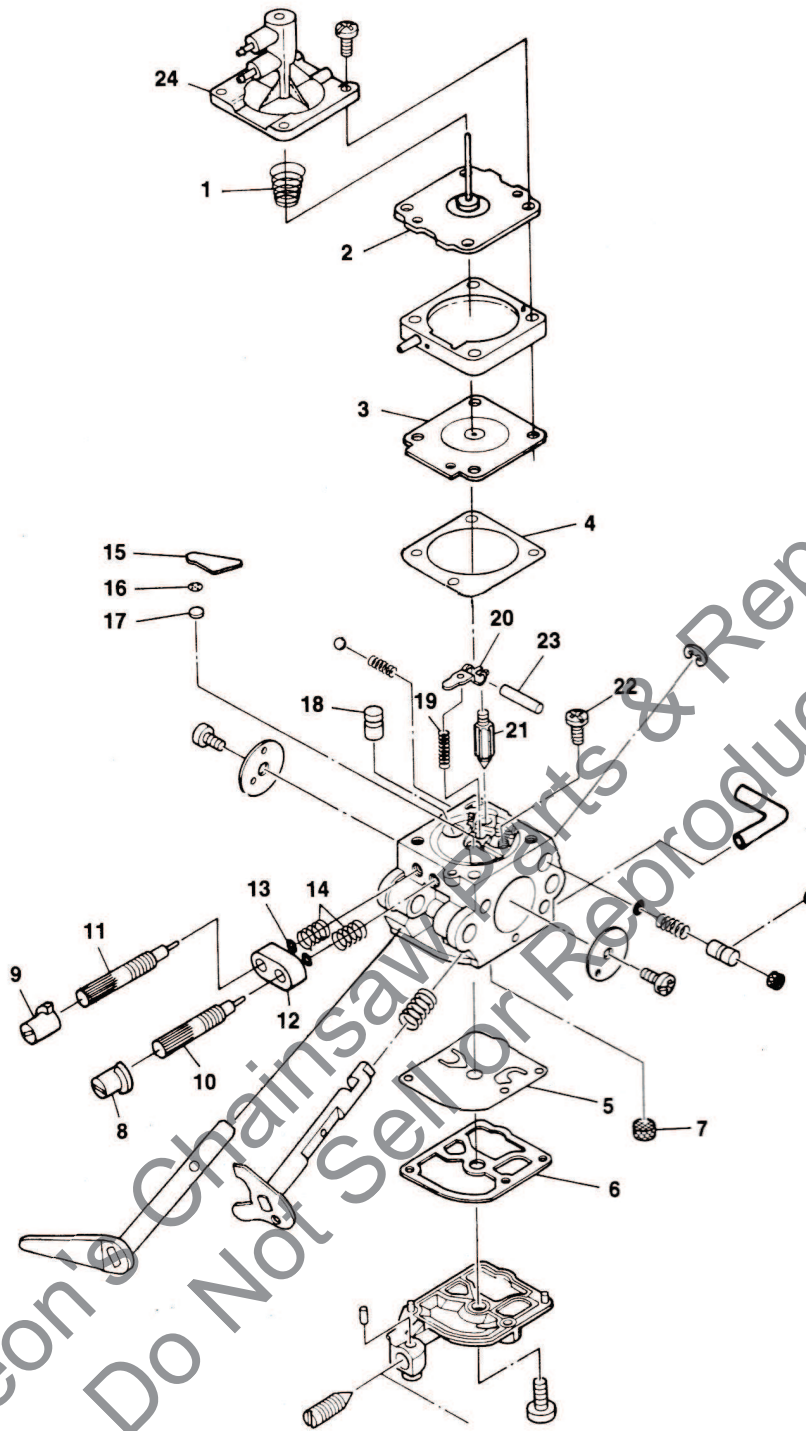
FIGURE 4  
 FIGURE 4  
 ABBILDUNG 4  
 FIGURA 4  
 FIGURA 4



No. No. Nr. No. N°	Part Number No. de Pièce Best.-Nr. No. de Pieza Pezzo N°	Description	Qty. Qté Menge Cant. Qta
1	88066	SCREW- Hex hd. w/washer (8-32 x 1/2")	2
2	02635	CLIP- Retaining	1
3	81124-A	NUT- Hex	1
4	70636	POST- Chain brake	1
5	70637-B	BAND- Brake	1
6	82579	SCREW- Torx (10-24 x 5/8")	1
7	● A-03061	HANDGUARD & LEVER	1
8	02661	DECAL (International Only)	1
9	82166	SCREW- (10-32 x 1/2")	1
10	JA-46138-3	PIN- Roll (3/16 x 1")	1
11	95395-A	PIN- Spring	1
12	70632	WASHER- Flat	1
13	82367	SCREW- Drive	1
14	02637	NUT- Weld	1
15	02661	DECAL- Handguard	1
16	JA-46136-1	PIN- Roll (1/8 x 7/8") (International Only)	1
17	02462	WEIGHT (International Only)	1
18	A-70767	PIVOT- Link	1

- Assemblies
- Ensemble
- Bausätze
- Compressi
- Conjunto

**Carburetor  
Carburateur  
Vergaser  
Carburador  
Carburatore**



**Repair Kit- 02768 (1-23)**  
**Jeu de reparation**  
**Reparatur- Satz**  
**Juego de reparaci3n**  
**Kit de Riparazione**

**Gasket/Diaphragm Kit- 02769 (3-6)**  
**Jue joint/diaphragme**  
**Dichtung/Membrane- Satz**  
**Conjunto diafragma/junta**  
**Kit diaframma/guarnizione**

**Oil Pump Plunger Kit- 02773 (1-2)**  
**Jeu de piston de pompe à huile**  
**Ölpumpenkolben- Bausatz**  
**Conjunto del émbolo de la bomba de aceite**  
**Kit pistone de la pompa dell'olio**

**Oil Pump Body- 02770 (24)**  
**Corps de pompe à huile**  
**Ölpumpengehäuse**  
**Cuerpo de la bomba de aceite**  
**Corpo de la pompa dell'olio**



**ACCESSORIES  
ACCESSOIRES  
ZUBEHÖR  
ACCESSORIES  
ACCESORIOS**

KIT- Repair (sprocket nose bar) ..... A-70239-E  
 Jeu de réparation (Lame à nez à pignon)  
 Reparatursatz (Kettenrad-Nasenspitze)  
 Kit per riparazioni (denta punta lama)  
 Juego de reparación (extremo barra rueda dentada)

FUEL LINE (10 ft. length) ..... 70310-99  
 Conduite de carburant (3 m de long)  
 Kraftstoffleitung (3 m Länge)  
 Condotto d'alimentazione (3 m di lunghezza)  
 Línea de combustible (10 pies de largo)

OIL LINE- (10 ft length)..... 70309-99  
 Conduite d'huile (3 m de long)  
 Ölleitung (3 m Länge)  
 Condotto dell'olio (3 m di lunghezza)  
 Línea de aceite (10 pies de largo)

SAFE•T•TIP® (Standard) ..... DA-70776-B  
 SAFE•T•TIP® (Standard)  
 SAFE•T•TIP® (Standard)  
 SAFE•T•TIP® (Standard)  
 SAFE•T•TIP® (Standard)

GREASE- Multi Purpose (Sprocket ..... 18453  
 bearing-PT guide bar)  
 Graisse universelle (Palier de pignon-PT - lame-guide)  
 Mehrzweck-Schmiermittel (Kettenradlager-PT-Führungsschiene)  
 Grasso, multiuso Cuscinetto della ruota dentata - PT - barra di guida)  
 Grasa de uso general (Cojinete de la rueda dentada - PT - barra guía)

CARRYING CASE ..... 94215-A  
 Boîtier de transport  
 Tragekasten  
 Custodia  
 Maletín

STARTING ROPE (250 ft. Reel) ..... 98052-A  
 Cordon de lanceur (75 m bobine)  
 Starterseil (76 m Spule)  
 Corda d'avviamento (bobina da 76 m)  
 Cuerda de arranque (carrete de 76 m)

**TOOLS  
OUTILS  
WERKZEUGE  
ATTREZZI  
HERRAMIENTAS**

WRENCH (combination)..... D-24814-A  
 Clé combiné  
 Schraubenschlüssel Kombination  
 Chiave combinata  
 Llave combinada

SILASTIC (crankcase sealing)..... 24823  
 Silastic (étanchéité du carter)  
 Silastic (Kurbelgehäuse Dichtung)  
 Silastic (sigillo di tenuta del carter)  
 Silastic (sello del cárter)

PULLER- Magneto Rotor ..... A-24747-A  
 Extracteur, rotor magnéto  
 Abziehwerkzeug-Magnetrotor  
 Rotore d'estrazione a magnéto  
 Extractor-rotor de magnéto

IGNITION TEST SPARK PLUG ..... JA-31316-4  
 Testeur d'allumage  
 Testzündkerze für Zündprüfung  
 Candela di collaudo  
 Bujía para probar el encendido

SHIM (0.015" AIR GAP)..... 22486  
 Cale (écart de 0,38 mm)  
 Distanzscheibe (0,38 mm Luftspalt)  
 Spessore (spinterometro 0,38 mm)  
 Suplemento (espacio de 0,38 mm)

T-25 TORX DRIVE BIT ..... 24982-01  
 Foret torx T-25  
 T-25 Torx-Antriebsbit  
 Punta Torx Drive T-25  
 Broca de empuje T-25 Torx

T-27 TORX DRIVE BIT ..... 18566-01  
 Foret torx T-27  
 T-27 Torx-Antriebsbit  
 Punta Torx Drive T-27  
 Broca de empuje T-27 Torx

NOTES  
NOTES  
NOTIZEN  
NOTAS  
NOTE

Leon's Chainsaw Parts & Repair  
Do Not Sell or Reproduce

NOTES  
NOTES  
NOTIZEN  
NOTAS  
NOTE

Leon's Chainsaw Parts & Repair  
Do Not Sell or Reproduce

**SYMBOL DEFINITIONS  
DEFINITIONS DES SYMBOLES  
ERKLÄRUNG DER WARNSYMBOL  
DEFINIZIONI DEI SIMBOLI  
SIGNIFICADO DE LOS SIMBOLOS**



**DANGER!  
DANGER!  
GEFAHR!  
¡PELIGRO!  
PERICOLO!**



**READ YOUR PRODUCT LITERATURE.  
LIRE LES PUBLICATIONS SUR LE PRODUIT.  
DIE MASCHINEN-BESCHREIBUNGEN UND ANLEITUNGEN LESEN.  
LEER EL MANUAL DEL PRODUCTO.  
LEGGERE LA DOCUMENTAZIONE DEL PRODOTTO.**

**WEAR HEARING AND EYE PROTECTION DEVICES.  
PORTER DES PROTEGE-OREILLES ET UNE PROTECTION DES YEUX.  
OHREN-UND AUGENSCHUTZ TRAGEN.  
USAR EQUIPO DE PROTECCIÓN DE OÍDOS Y OJOS.  
INDOSSARE AURICOLARI ED OCCHIALI PROTETTIVI.**

**CUSTOMER ASSISTANCE**

**FOR THE LOCATION OF YOUR NEAREST HOMELITE SERVICING DEALER IN THE UNITED STATES, PUERTO RICO, AND THE VIRGIN ISLANDS.**

**CALL: 1-800-242-4672**

**NOTE: DEALER INFORMATION, TECHNICAL ADVICE AND PRODUCT INFORMATION CAN BE OBTAINED AT THIS NUMBER.**

**HEADQUARTERS**

**HOMELITE DIVISION OF TEXTRON INC.  
P.O. BOX 7047  
CHARLOTTE, N.C. 28241**

**OVERSEAS OFFICES**

**ENGLAND**

**HOMELITE  
DIVISION OF TEXTRON LIMITED  
UNIT 22  
Hither Green Trading Estate  
Clevedon (Nr. Bristol)  
Avon, BS 21 6XU England**

**FRANCE**

**HOMELITE TEXTRON  
UNE DIVISION DE TEXTRON  
S.A.R.L.  
Z.I. du Vert-Galant  
Rue du Chateau/Rue de la Garenne  
95310 Saint-Quen-L'Aumone  
France**

**NETHERLANDS**

**HOMELITE TEXTRON  
DIVISION OF TEXTRON ATLANTIC  
(HDQS. — Europe, Africa and Middle East)  
Haverstraat 24  
2153 GB Nieuw Vennep  
The Netherlands**

**AUSTRALIA**

**HOMELITE DIVISION OF TEXTRON PACIFIC LIMITED  
HEADQUARTERS  
22 Terra - Cotta Drive  
Blackburn, 3130  
Victoria, Australia**

**CANADIAN OFFICES**

**HOMELITE**

**DIVISION OF TEXTRON CANADA LIMITED  
1850 55th Avenue  
Lachine, Quebec, Canada  
H8T 3J5**

212-214 590 Ebury Place  
Annacis Island  
Delta, British Columbia  
V3M 6K7

16520-111th Avenue  
Edmonton, Alberta  
T5M 3V8

595 Canarctic Drive  
Downsview (Toronto)  
Ontario, Canada  
M3J 2P9

691 Malenfant Blvd.  
Dieppe Industrial Park  
Dieppe, New Brunswick  
E1A 5T8

**HOMELITE TEXTRON**

Homelite Division of Textron Inc.