

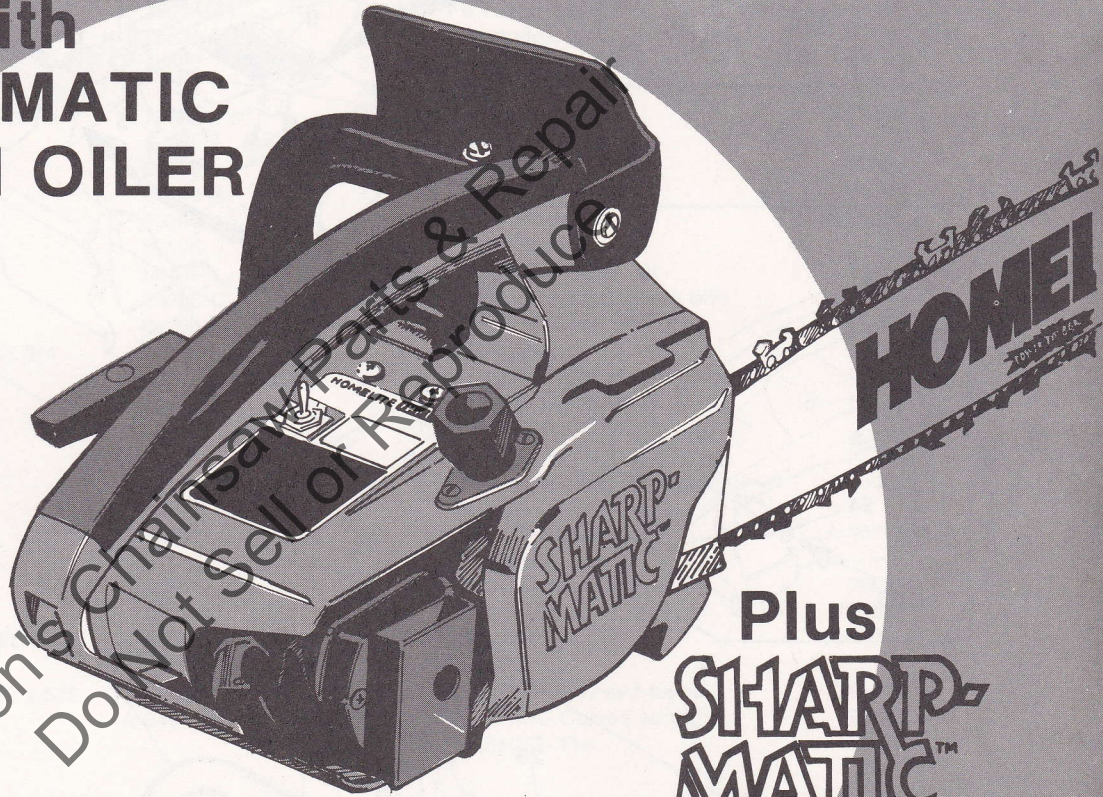
PART NO. 17515

PRINTED IN U.S.A.  
Price .35

**PARTS  
LIST**

**190 Chain Saw**

with  
**AUTOMATIC  
CHAIN OILER**



Plus  
**SHARP-  
MATIC™**

**Sharpening  
Control**

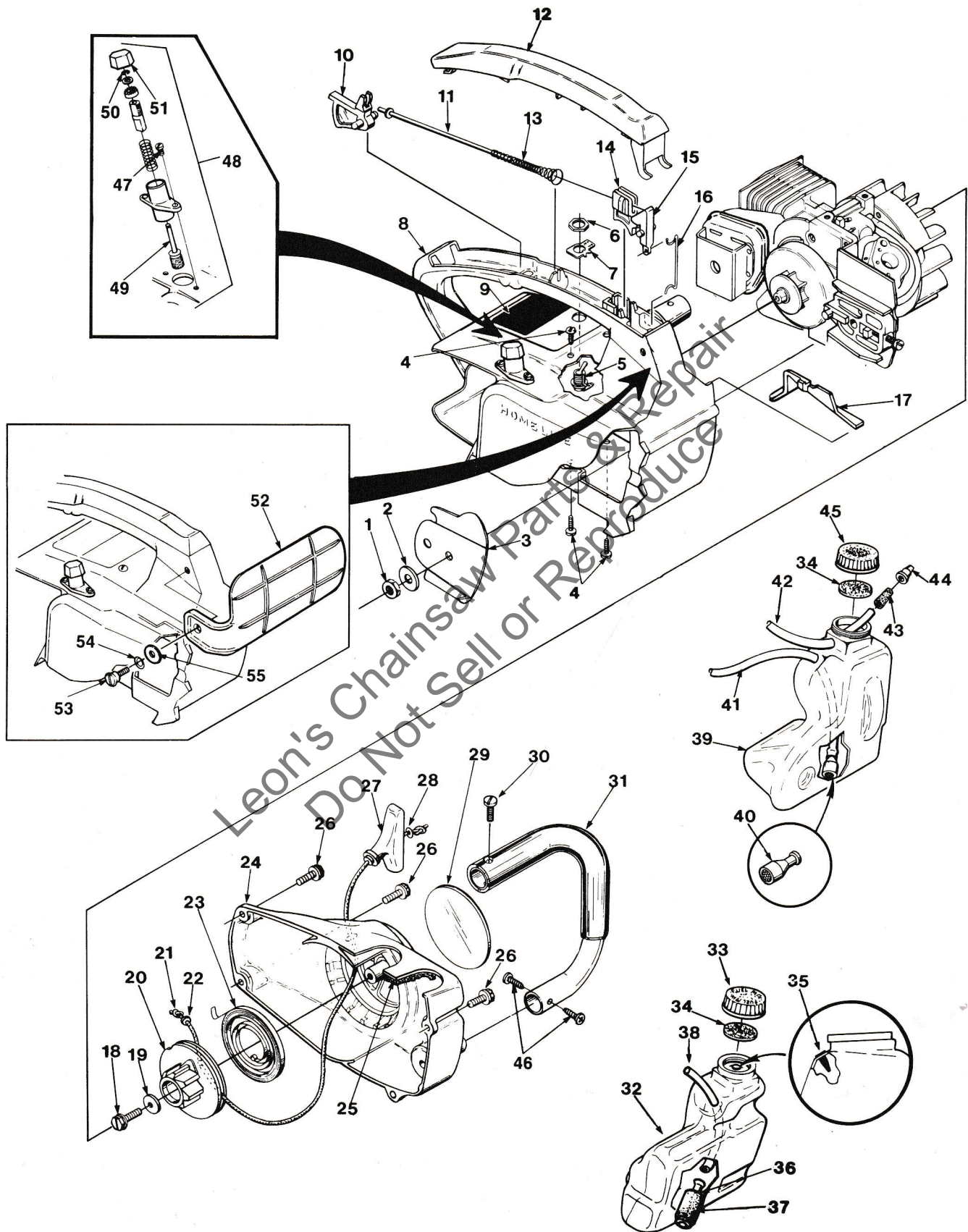
**HOMELITE TEXTRON**

Homelite Division of Textron Inc.



# 190

## FIGURE 1



Leon's Chainsaw Parts & Repair  
Do Not Sell or Reproduce

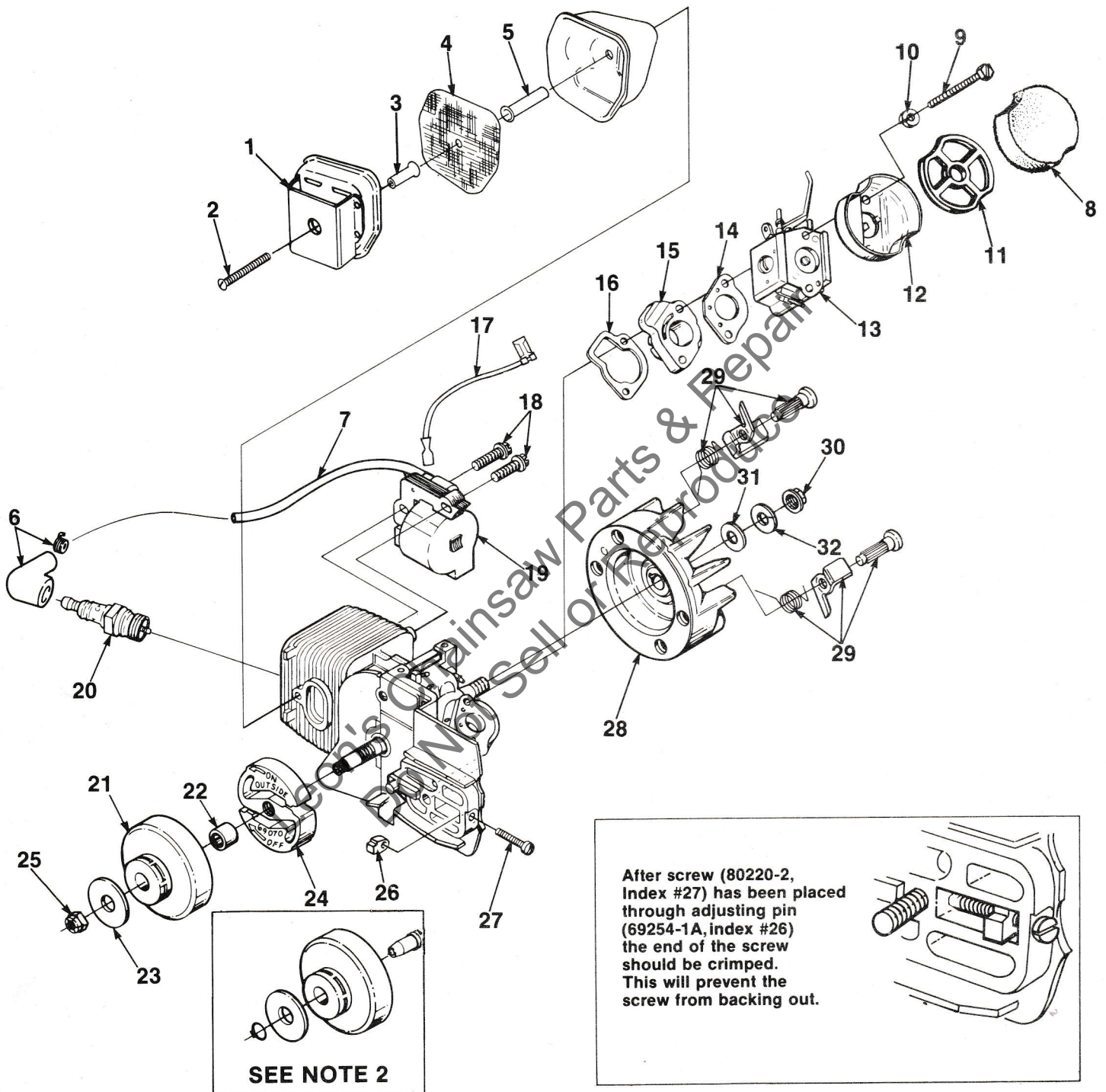
# 190

## FIGURE 1

No.	Description	Part No.	Qty.	No.	Description	Part No.	Qty.
1	NUT- Guide bar, 5/16-18	81162	1	32	TANK- Fuel	A-70899	1
2	WASHER- Flat	84056	1		Includes:		
3	PLATE- Guide bar	69360-1	1	33	CAP- Tank fuel (red)	A-70894-A	1
4	SCREW- Pan hd., 10-24 x 1/2	82393	4		Includes:		
5	SWITCH- Stop (grounding)	A-63938	1	34	GASKET- Filler cap	94838-A	1
	Includes:			35	VALVE- Check (duck bill)	69451	1
6	NUT- Hex	72084-A1	1	36	FILTER- Fuel	A-69923	1
7	PLATE- "ON-OFF"	70834	1		Includes:		
8	HOUSING- Engine	A-95886	1	37	ELEMENT- Felt	64083	1
	Includes:			38	LINE- Fuel	70310-29	1
9	PLATE- Starting instructions	70835	1	39	TANK- Oil	A-70898	1
10	TRIGGER- Rear	69106-A	1		Includes:		
11	ROD- Throttle	A-69136	1	40	FILTER- Oil	A-68593	1
12	COVER- Handle	69140-A	1	41	LINE- Oil	70309-24	1
13	SPRING- Throttle rod	69249	1	42	LINE- Pressure	A-69358	1
14	TRIGGER- Front-	69105	1		Includes:		
15	LEVER- Throttle	69107	1	43	CONNECTOR- Oil	69659-1A	1
16	ROD- Throttle (front)	69255-C	1	44	VALVE- Check (duck bill)	69451	1
17	COVER- Air filter	69263	1	45	CAP- Tank (oil) (black)	A-70893-A	1
18	SCREW- Hex washer hd., #10 x 3/4	70771	1		Includes:		
19	WASHER- Flat	94062	1		GASKET- Filler cap (See #34)	94838-A	1
20	PULLEY- Starter	69158	1	46	SCREW- Pan washer hd.	82348	2
21	ROPE- Starter #4, 34" long	A-93874	1	47	SCREW- Thread forming		
	Includes:				8-32 x .365	82327	2
22	WASHER- Nylon	93862	1	48	CHAIN SHARPENER (Complete)	A-95662	1
23	SPRING- Rewind	69217	1		Includes:		
24	HOUSING- Rewind starter	A-95630	1	49	STONE- Chain sharp	A-95709	1
25	FILTER- Fuel tank valve	69443	1		Includes:		
26	SCREW- Hex 10-32 x 5/8	80704	4	50	RING- Retaining	70925	1
27	GRIP- Starter rope	70211	1	51	KNOB- Adjusting	94806	1
28	WASHER- Flat	84025	1	52	HAND GUARD	A-70796-B	1
29	DECAL (190)	95887	1		Includes:		
30	SCREW- Pan washer hd., 10-32 x 5/8	82239	1	53	SCREW- 10-32 self tapping	95713	1
31	HANDLE BAR	A-94971	1	54	WASHER- Curved spring	95694	1
				55	WASHER- Flat	96102	1

# 190

## FIGURE 2





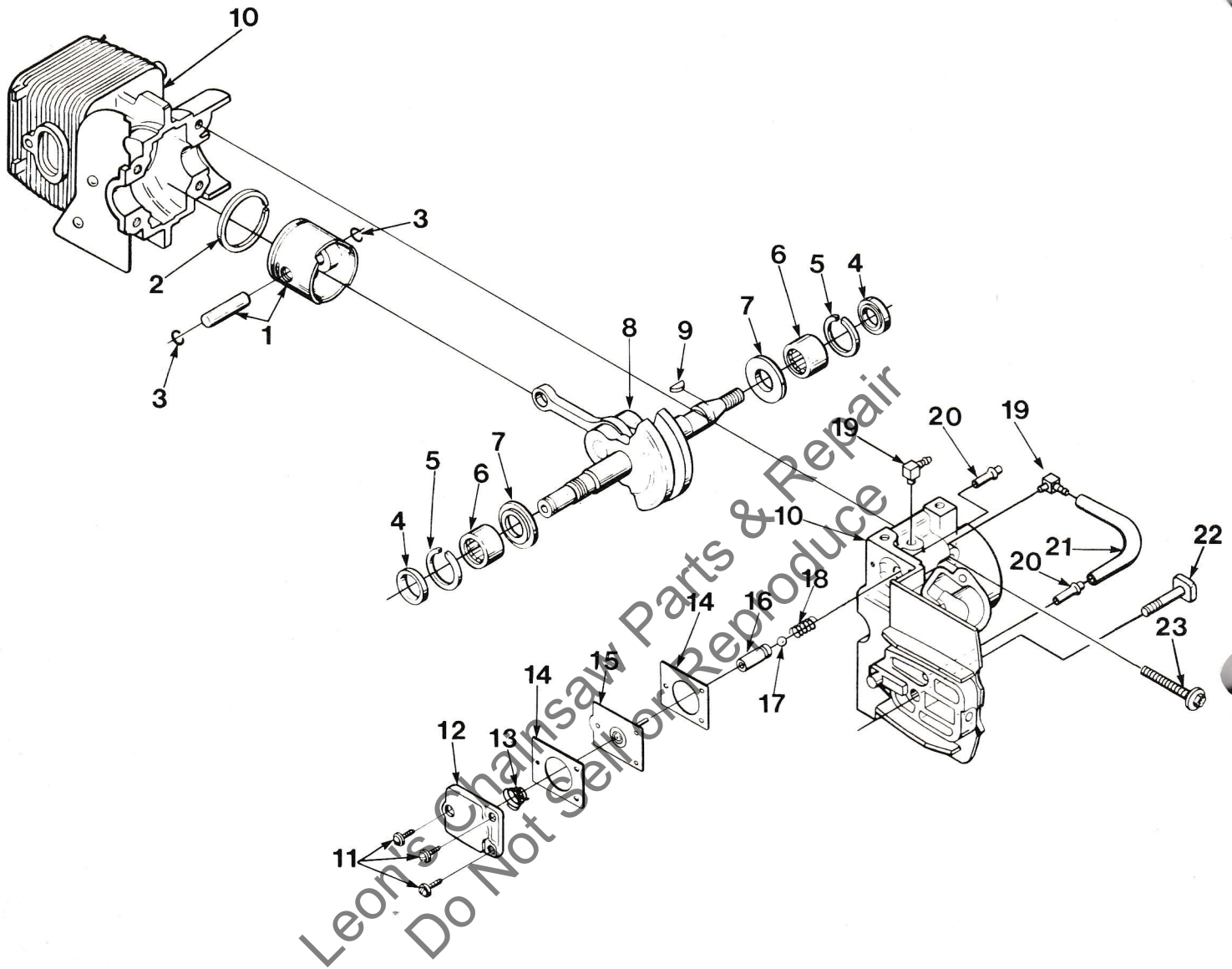
No.	Description	Part No.	Qty.
	MUFFLER (Complete)	A-94051-B	1
	Includes:		
1	CAP- Muffler (w/shield)	A-95428	1
	SPARK ARRESTOR KIT	A-94139	1
	Includes:		
2	SCREW	82320	1
3	SPACER	93989	1
4	SCREEN- Spark arrestor	93991	1
5	SPACER	93990	1
6	TERMINAL- Spark plug	A-33055	1
7	LEAD- High tension (Note 1)	69326	1
8	FILTER- Air	69141	1
9	SCREW- Hex hd. 10-32 x 2 1/4	80481	2
10	WASHER- Lock, #10	83006-1	2
11	RETAINER- Air filter	69457	1
12	CUP- Air filter	69148	1
13	CARBURETOR- HDC-57	A-94649	1
	CARBURETOR- HK-16C	A-70927-B	1
14	GASKET- Carburetor	65016	1
15	MANIFOLD- Intake	A-69373-A	1
16	GASKET- Intake manifold	69143	1
17	LEAD- Ground	A-94721	1
18	SCREW- Hex w/washer, 8-32 x 3/4	82248	2
19	MODULE- Ignition	94711	1
20	SPARK PLUG- Champion DU-7J	68616-S	1
21	SPROCKET & DRUM W/Bearing	A-95343	1
	Includes:		
22	BEARING- Needle	68512	1
23	WASHER- Thrust (clutch)	95299	2
24	CLUTCH- "S"	A-70351-A	1
25	NUT- Lock (See Note 2)	81112	1
26	PIN- Adjusting (See insert)	69254-1A	1
27	SCREW- Adjusting (Fil hd. 8-32 x 1) (See Insert)	80220-2	1
28	ROTOR & STARTER PAWL	A-94717-A	1
	Includes:		
29	KIT- Starter pawl	A-70285-A	1
30	NUT- Hex 5/16-24	81117	1
31	WASHER- Flat	84065-1	1
32	WASHER- Lock	83002	1

**NOTE -1** Cut wire to 6 1/2".

**NOTE -2** If crankshaft is threaded on clutch end use 81112 nut.  
Shafts with a groove requires 93972 retaining ring.

# 190

## FIGURE 3

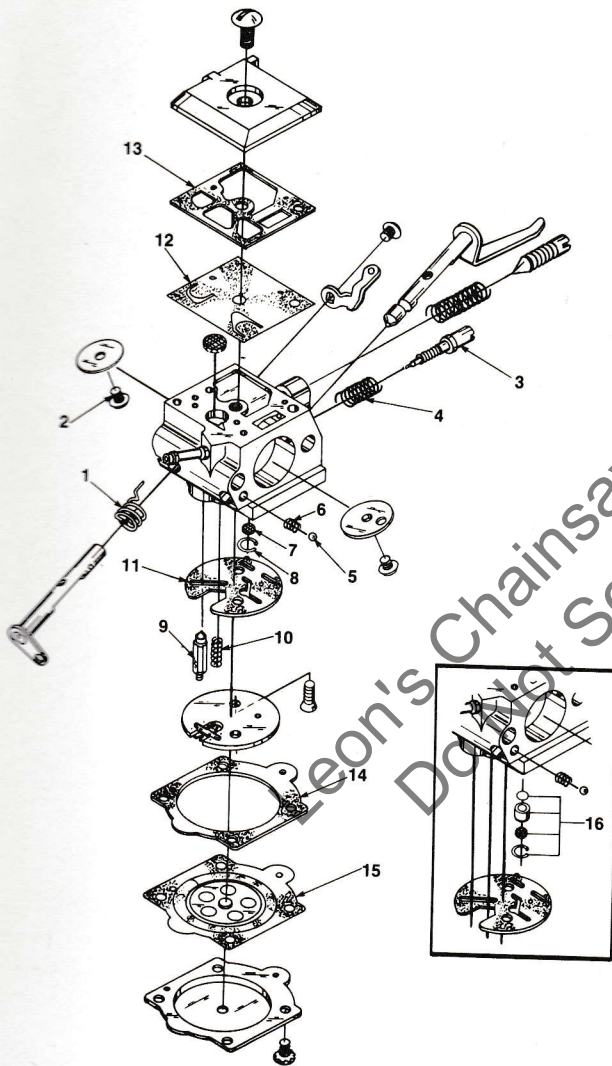


No.	Description	Part No.	Qty.
1	PISTON & PIN	A-70224-A	1
	Includes:		
2	PISTON RING	70205	1
3	RING- Piston pin retaining	65261	2
4	SEAL	94638	2
5	SPACER- Seal	69407	2
6	BEARING- Needle	12530	2
	BEARING- Needle (Opt.)	68513	2
7	WASHER- Thrust	69093-A	2
8	CRANKSHAFT	A-96384	1
	Includes:		
	NUT- (Not Shown)	81112	1
9	KEY- Magneto	69250	1

No.	Description	Part No.	Qty.
10	CYLINDER & CRANKCASE	A-96178	1
	Includes:		
11	SCREW- Pan hd., 6-32 x 3/8	80571	3
12	COVER- Oil pump	69224-1C	1
13	SPRING- Oil pump	69447	1
14	GASKET- Oil pump	69244-1	2
15	PLUNGER- Oil pump	A-12356-B	1
16	BODY- Oil pump	69343-1	1
17	BALL- Check valve	60051	1
18	SPRING- Check valve	68570	1
19	FITTING- Oil line	70204	2
20	FITTING- Tube	69833	2
21	LINE- Oil	70161	1
22	BOLT- Guide bar 5/16-18	65025	1
23	SCREW- Sems hex hd., 8-32 x 1	88044	4

**CARBURETOR  
A-94649**

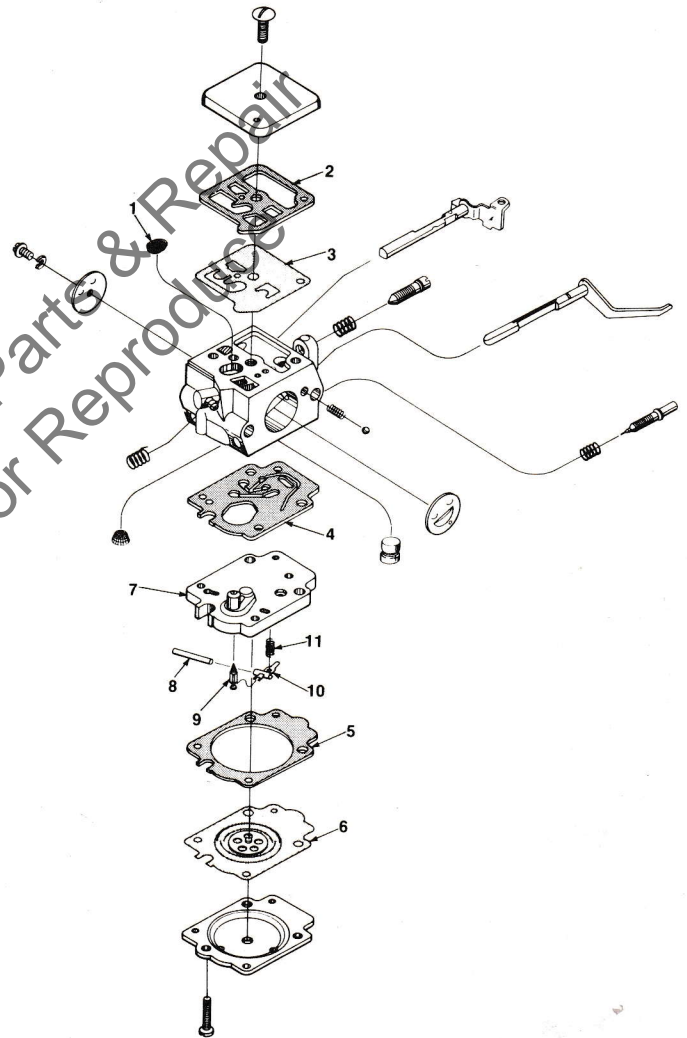
**HDC-57**



- 94056 REPAIR KIT (Includes #1-15)
- 94701 GASKET/DIAPHRAGM KIT (Includes #11-15)
- 93910 CHECK VALVE REPAIR KIT (#16)
- 94057 CIRCUIT PLATE- High altitude .029 (Not Shown)

**CARBURETOR  
A-70927-B**

**HK-16-C**



- 95697 REPAIR KIT (Includes #1-6)
- 94817 MODULE #7 (Includes #8-11)

## ACCESSORIES

LINE- Fuel (10 ft. length)	70310-99
LINE- Oil (10 ft. length)	70309-99
GREASE- Multi-use (8 oz.)	
(Sprocket bearing - PS Guide Bar)	17193
CARRYING CASE	94216
STARTING ROPE- 250 ft. reel #4	68848

## TOOLS

SILASTIC- (Crankcase sealing)	24823
PLIERS- Tru-Arc (Sprocket retaining ring)	17198
PULLER- Magneto rotor	A-24747-A
Includes:	
BOLT- 5/16-18 x 1 3/4 (1)	80288
NUT- Hex 5/16-18 (2)	81196
WRENCH- Spanner (clutch)	A-93791
Includes:	
PIN- Clutch spanner (2)	23717-A
TOOL- Carburetor check valve installation	24972

0182BY

Leon's Chainsaw Parts & Repair  
Do Not Sell or Reproduce

## HOMELITE DIVISION OF TEXTRON INC.

P.O. Box 7047  
14401 Carowinds Boulevard  
Charlotte, N.C. 28217

# HOMELITE **TEXTRON**

Homelite Division of Textron Inc.