

Homelite®

- GB PARTS LIST
- F LISTE DE PIÈCES
- D TEILELISTE
- I ELENCO DELLE PARTI
- E LISTA DE PIEZAS

LX30 *Bandit*®

UT10705-E

UT10716-D

UT10705-3B

180

UT10752

- GB IF YOUR UNIT IS NOT LISTED ABOVE, SEE CHART ON PAGE 2 TO FIND PARTS LIST NUMBER FOR YOUR UNIT.
- F SI VOTRE PRODUIT (UNITÉ, ARTICLE) NE FIGURE PAS SUR LA LISTE CIDESSUS, REPORTEZ-VOUS À LA PAGE 2 POUR LE NUMÉRO DE LA LISTE DES PIÈCES CORRESPONDANT.
- D FALLES IHR GERÄT AUF VORSTEHENDER LISTE NICHT AUFGEFÜHRT IST, SUCHEN SIE IN DER TABELLE AUF SEITE 2 NACH DER ERSATZTEILLISTENNUMMER FÜR IHR GERÄT.
- I SE LA VOSTRA UNITÀ NON SI TROVA FRA QUELLE SOPRA ELENcate, VEDERE LA TABELLA A PAGINA 2 PER TROVARE IL NUMERO DI CATALOGO DELLA VOSTRA UNITÀ.
- E SI SU UNIDAD NO FIGURA EN LA LISTA ANTERIOR, CONSULTE LA TABLA DE LA PAGINA 2 PARA ENCONTRAR LOS NUMEROS DE LAS PARTES PARA LA MISMA.

Printed in U.S.A.
Imprimé aux. E.-U.
Gedruckt in U.S.A.
Stampato negli Stati Uniti
Impreso en EE. UU.
P/N PS01537

- GB PARTS LIST
- F LISTE DE PIÈCES
- D TEILELISTE
- I ELENCO DELLE PARTI
- E LISTA DE PIEZAS

	UT#	18823	18897
LX30 Bandit	10705, A	X	
	10705-B, C, D		X
	10716, A	X	
	10716-B, C		X
	10705-3, A		X

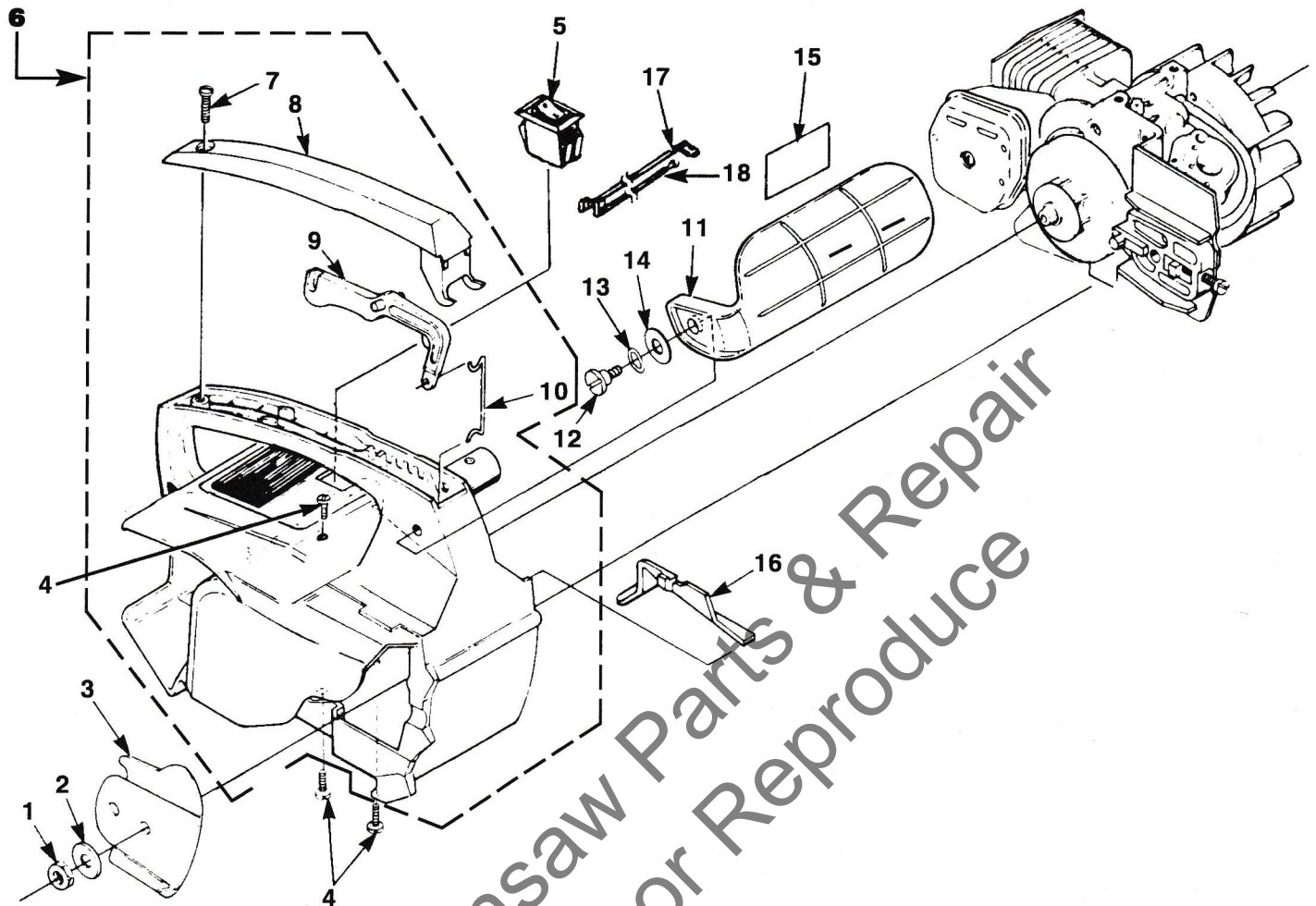
- GB NOTES
- F NOTES
- D NOTIZEN
- I NOTE
- E NOTAS

	UT#		

Leon's Chainsaw Parts & Repair
Do Not Sell or Reproduce

12/4/98

ENGINE HOUSING

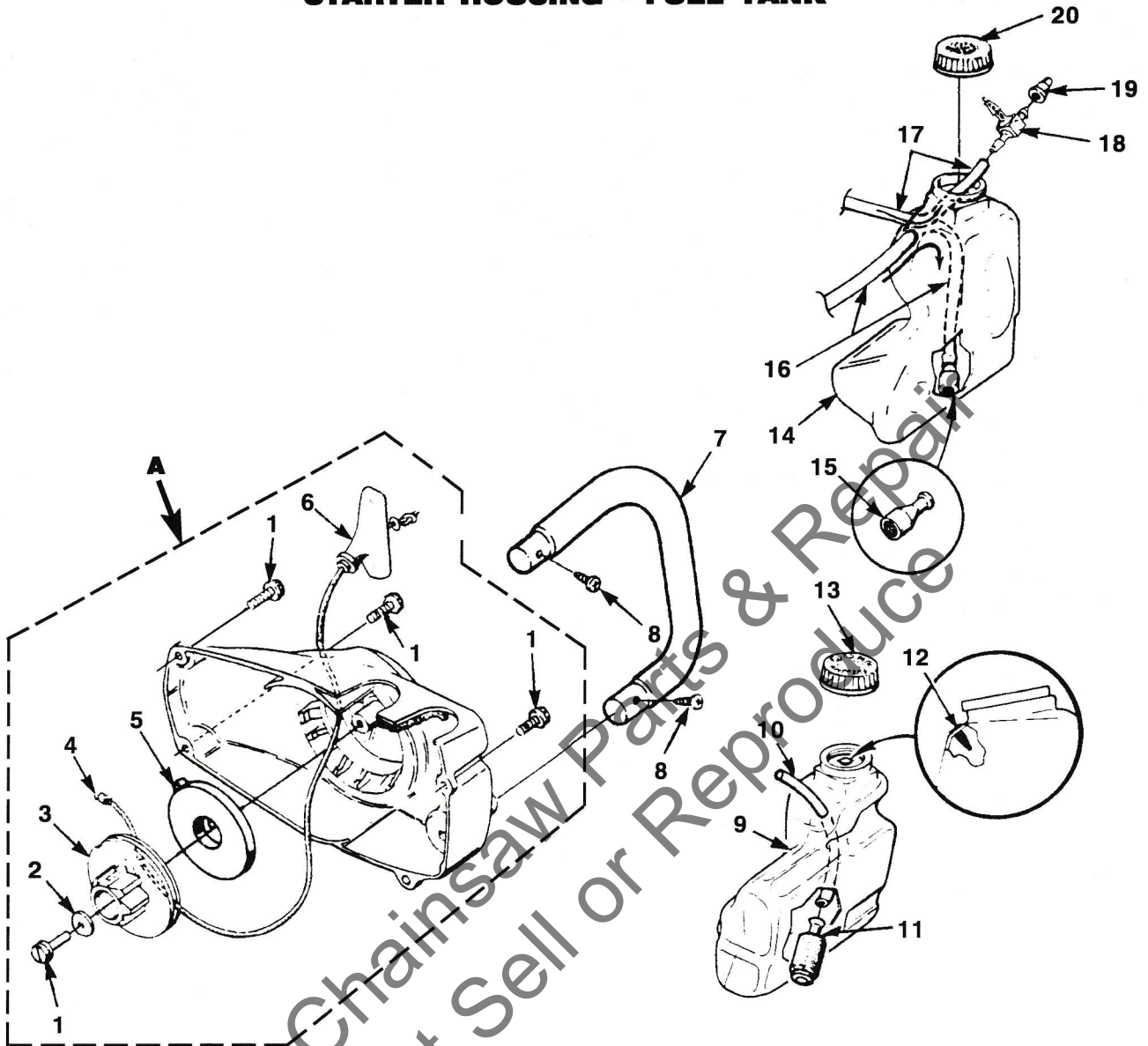


No.	Part No.	Description	Qty
1	81065 2	NUT- Guide Bar	1
2	69309 A	WASHER- Flat	1
3	04440	PLATE- Guide Bar	1
4	82538	SCREW- Pan Hd. (10-24 X 3/4")	4
5	02497	SWITCH- Rocker	1
6	• A 07651	ENGINE HOUSING KIT	1
7	82312	SCREW- Pan Hd. (#10 X 5/8")	1
8	69872 A	COVER- Handle	1
9	69874 D	TRIGGER	1
10	00138	ROD- Throttle	1
11	• A 70796 C	HANDGUARD	1
12	95714	SCREW- Shoulder (#10 X .560)	1
13	95694	WASHER- Curved Spring	1
14	96102	WASHER- Flat	1
15	02661	DECAL- Handguard	1
16	69263	COVER- Air Filter	1
17	A 02484	LEAD- Ring Term.	1
18	A 02482	LEAD- Double Flag	1

Item No.	Torque Specs		Required Loctite
	In/Lbs	Nm	
1	Hand Tight	
4	55-65	6.3-7.5	
7	15-20	1.7-2.3	
12	40-50	4.6-5.7	

Warranty Flat Rate		
Job	Description	Time/Hr.
FD97	Hand Guard	0.6
FD12	Engine Housing	0.6
FA17	Ignition Switch	0.3
FF13	Throttle/Rod/Trigger	0.3
FK10	Guide Bar, Shims, Adj.	0.3
FA12	Ground Strap/Lead	0.3

STARTER HOUSING - FUEL TANK



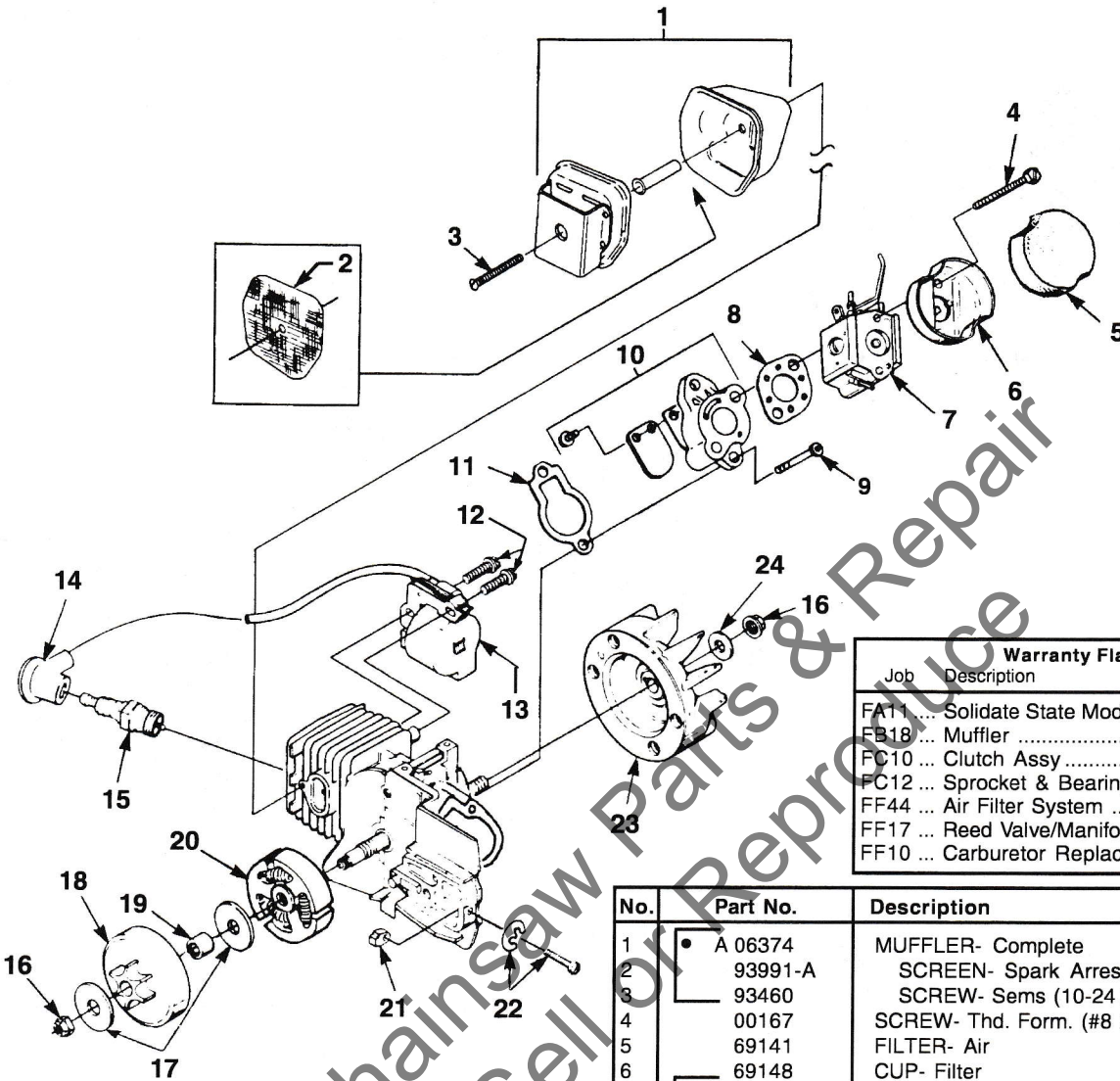
No.	Part No.	Description	Qty
A	A 06268 A	STARTER ASSY., Complete	1
1	82563	SCREW- Torx (#10 X 3/4")	5
2	94062	WASHER- Retaining (#10)	1
3	97768 B	PULLEY- Starter	1
4	97899 01	ROPE- Starter (46")	1
	98052 A	ROPE- Starter (250 Ft. Reel)	1
5	A 97908	SPRING & CONTAINER	1
6	02264	GRIP- Starter	1
7	A 07633	HANDLE BAR	1
8	94065	SCREW- Pan Plastite (#10-16 X 3/4")	2
9	A 00174	FUEL TANK	1
10	07454 28	TUBING- Rubber (7")	1
11	49422	FILTER- Fuel	1
12	98819	VALVE- Duck Bill	1
13	A 97359 A	FUEL CAP	1

No.	Part No.	Description	Qty
14	A 07552	OIL TANK	1
15	A 68593	FINDER- Oil	1
16	07454 32	TUBING- Rubber (8")	1
17	07454 20	TUBING- Rubber (5")	1
18	A 07507	FITTING- Vent	1
19	96841	VALVE- Check	1
20	A 97359 A	OIL CAP	1

Torque Specs			
Item No.	In/Lbs	Nm	Required Loctite
1	30-50	3.4-5.8	
8	15-20	1.7-2.3	

Warranty Flat Rate		
Job	Description	Time/Hr.
FD20	Handle Bar Assy	0.3
FG10	Starter Assy	0.3
FF12	Fuel Line	0.4
FF16	Fuel Tank	0.5
FE12	Oil Lines	0.4
FE14	Oil Tank	0.5

ENGINE HOUSING

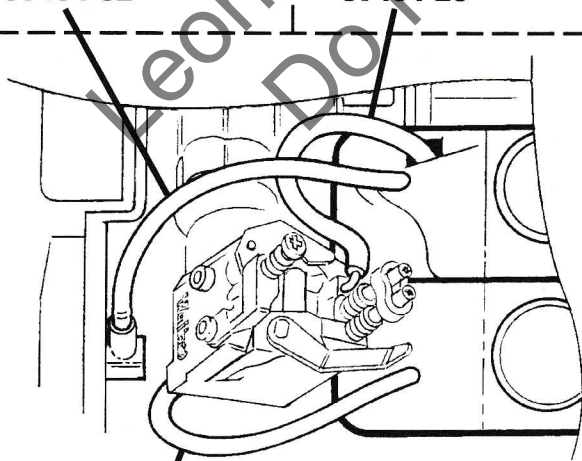


Job	Description	Time/Hr.
FA11	Solidate State Module	0.3
FB18	Muffler	0.3
FC10	Clutch Assy	0.6
FC12	Sprocket & Bearings	0.6
FF44	Air Filter System	0.2
FF17	Reed Valve/Manifold	0.7
FF10	Carburetor Replace	0.5

No.	Part No.	Description	Qty
1	A 06374	MUFFLER- Complete	1
2	93991-A	SCREEN- Spark Arrestor	1
3	93460	SCREW- Sems (10-24 X 1 7/8")	1
4	00167	SCREW- Thd. Form. (#8 X 1.65)	2
5	69141	FILTER- Air	1
6	69148	CUP- Filter	1
7	UP 00750	CARBURETOR KIT	1
8	02488	GASKET- Carburetor	1
9	82537	SCREW- Thread Form. (#10-24 X 7/8")	2
10	A 02153	HEAT DAM & REED	1
11	02453	GASKET- Heat Dam	1
12	82540	SCREW- Thread Form. (8-32 X 1")	2
13	94711 CS	MODULE- Ignition	1
14	A 33055	TERMINAL	1
15	96169 S	SPARK PLUG	1
	79252	SPARK PLUG (Int'l) (UT-10716-B)	1
16	81229 A	NUT- Cone Lock (5/16-24)	2
17	95299	WASHER- Thrust	2
18	A 95653 E	SPROCKET & DRUM	1
19	70277	BEARING	1
20	A 97921	CLUTCH KIT	3
21	69254 2	PIN-Guide Bar Adjusting	1
22	A 00440	SCREW & E RING KIT	1
23	A 04158 S	ROTOR & STARTER PAWLS	1
24	84065	WASHER- (5/16")	1

FROM OIL PICK-UP TO CHECK VALVE FITTING. 8" OVERALL LENGTH WITH 3 3/4" OUT OF TANK.
07454-32

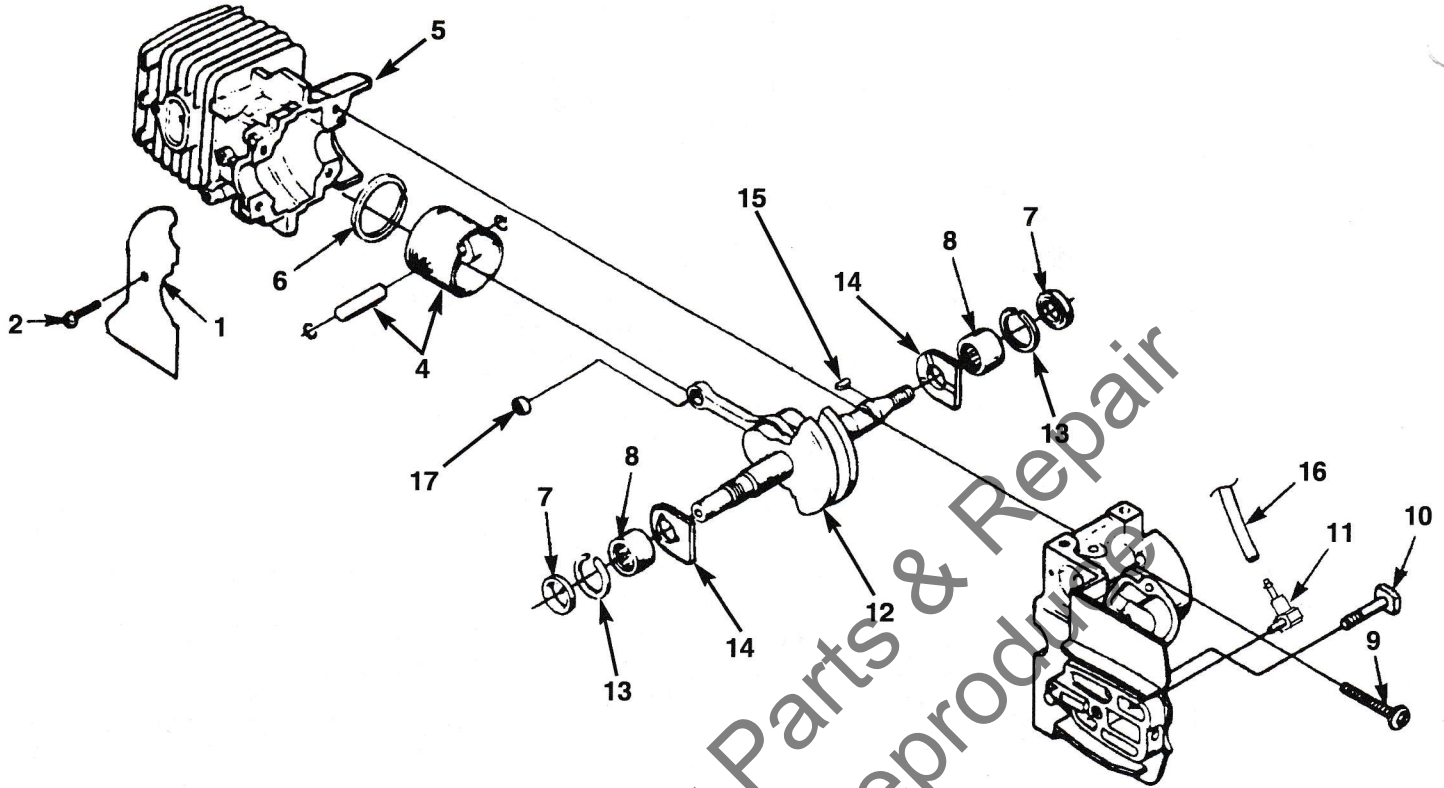
PRESSURE PULSE LINE FROM CARBURETOR BRASS ELBOW TO DUCK BILL IN OIL TANK. 2 3/4" LONG.
07454-20



FUEL INLET LINE FROM PICK-UP TO FITTING ON BOTTOM OF CARBURETOR. 5 1/2" LONG OVERALL WITH 1 3/4" OUT OF TANK.
07454-28

Item No.	Torque Specs		Required Loctite
	In/Lbs	Nm	
3	50-60	5.7-6.9	
4	35-45	4.0-5.2	
9	65-75	7.5-8.6	
12	30-40	3.4-4.6	
15	120-180	13.8-20.7	

ENGINE INTERNAL



No.	Part No.	Description	Qty
1	02639	SAW DUST SHIELD	1
2	93932	SCREW- Tapping (#6-32 x 5/16")	1
3	A 00132 1A	SHORT BLOCK	1
	UP 00068	SHORT BLOCK **	1
4	A 04330	PISTON & PIN ASSY.	1
5	02485 5	CYLINDER	1
	UP 00069	CYLINDER **	1
6	93165	RING- Piston	1
7	07025	SEAL- Shaft	2
8	12530	BEARING- Needle	2
9	82567	SCREW- Torx Pan Hd. (10-24 x 1 1/8")	4
10	69195	BOLT- Guide Bar	1
11	07510	VALVE- Check	1
12	A- 97611-A	CRANKSHAFT- Rod and Bearing	1
13	69407	SPACER	2
14	03962	WASHER- Thrust	2
15	69250	KEY-Woodruff	1
16	07454-32	TUBING- Rubber (Oil Line) (8")	1
17	02035	BEARING- Wrist Pin	1

Item No.	Torque Specs		Required Loctite
	In/Lbs	Nm	
2	18-24	2.0-2.8	
9	65-75	7.5-8.6	

Warranty Flat Rate		
Job	Description	Time/Hr.
FB20	Short block	1.0
FB15	C/Case Seal (per side)	0.4
FK11	Guide Bar Studs	0.5

** After Serial Number HR0010001

ACCESSORIES

<p>SAFE T TIP (Standard) A-70776-B</p> <p>GREASE-Multi Purpose 18453 Graisse universelle Mehrzweck-Schmiermittel Grasso, multiuso Grasa de uso general</p>	<p>GUIDE BAR Guide barre Schwert Lama Barra Guia</p>	<p>CHAIN Chaîne Kette Catena Cadena</p>	<p>HT-10001-O4 HI-N7242-AH (35-MD50-42)</p> <p>HT-12001-O4 HI-N7248-BH (35-MD50-48)</p> <p>PT-12371-O4 HI-N7248-BH (35-MD50-48)</p> <p>PT-14371-O4 HI-N7253-AH (35-MD50-53)</p> <p>PT-16371-O4 HI-N7259-AH (35-MD50-53)</p>
<p>KIT-Repair (sprocket nose bar) A-70239-E Jeu de réparation (lame à nez à pignon) Reparatursatz (Kettenrad-Nesenspitze) Kit per riparazioni (denta punta lama) Juego de reparacion (extremo barra rueda dentada)</p>			
<p>TOOLS OUTILS WERKZEUGE ATTREZZI HERAMIENTAS</p>	<p>IGNITION TEST SPARK PLUG GP-20322-5 Testeur d'allumage Testzündkerze für Zündprüfung Candela di collaudo Bujía para probar el encendido</p>		
<p>WRENCH (combination) D-24814-B Clé combiné Schraubenschlüssel Kombination Chiave combinatata Llave combinada</p>	<p>SHIM (0.015" AIR GAP) 22486 Cale (écart de 0,38 mm) Distanzscheibe (0,38 mm Luftspalt) Spessore (spinterometro 0,38 mm) Suplemento (espacio de 0,38 mm)</p>		
<p>SILASTIC (crankcase sealing) PS24823 Silastic (étanchéité du carter) Silastic (Kubelgehäuse Dichtung) Silastic (sigillo di tenuta del carter) Silastic (sello del carter)</p>	<p>T25 TORX DRIVE BIT 24982-01 Foret torx T-25 T-25 Torx-Antriebsbit Punta Torx Drive T-25 Broca de empuje T-25 Torx</p>		
<p>PULLER-Magneto Rotor A-24747-A Extracteur, rotor magnéto Abziehwerkzeug-Magnetrotor Rotore d'estrazione a magnéto Extractor-rotor de magnéto</p>	<p>T27 TORX DRIVE BIT 18566-01 Foret torx T-27 T-27 Torx-Antriebsbit Punta Torx Drive T-27 Broca de empuje T-27 Torx</p>		

CUSTOMER ASSISTANCE

FOR THE LOCATION OF YOUR NEAREST
Homelite®
SERVICING DEALER
IN THE UNITED STATES, PUERTO RICO, AND
THE VIRGIN ISLANDS,
CALL:
1-800-242-4672

HEADQUARTERS

John Deere Consumer Products, Inc.
P. O. BOX 7047
CHARLOTTE, NC 28241

OVERSEAS OFFICES

EUROPE, AFRICA & MIDDLE-EAST

Homelite Netherlands B.V.
A Deere & Company Affiliate
Haverstraat 24
2153 GB Nieuw Vennep
The Netherlands

tel: +31-252-687342 / fax: +31-252-687993

FRANCE

Homelite Atlantic SARL
Groupe Deere & Co.
Rue du Paradis - BP 231 - Ormes
45144 Saint-Jean-De-La-Ruelle
Cedex, France

AUSTRALIA

John Deere Limited
A.C.N. 008 671 725
166-170 Magnesium Drive
Crestmead, Queensland 4132
Australia

CANADIAN OFFICE

John Deere Consumer Products Limited
Produits consommateurs
John Deere Limitée

1850-55e/th Avenue
Lachine, Québec, Canada H8T 3J5
1-800-363-5715

John Deere Consumer Products, Inc.