

Homelite®

GB PARTS LIST

F LISTE DE PIÈCES

D TEILELISTE

I ELENCO DELLE PARTI

E LISTA DE PIEZAS

180	<u> </u> (CANADA)	UT10727-C
192	<u> </u>	UT10729-D
		UT10751
200	<u> </u>	UT10690-E
		UT10719-E
		UT10723-D
SUPER 2 SL	<u> </u>	UT10701-D
XL	<u> </u>	UT10694-D
		UT10753, -1
		UT10754
		UT10722-E
SUPER 2	<u> </u>	UT10696-E, E1
		UT10697-E
Little Red	<u> </u>	UT10740-B
		UT10741-A, B
		UT10748-B, C

GB IF YOUR UNIT IS NOT LISTED ABOVE, SEE CHART ON PAGE 2 TO FIND PARTS LIST NUMBER FOR YOUR UNIT.

F SIVOTRE PRODUIT (UNITÉ, ARTICLE) NE FIGURE PAS SUR LA LISTE CIDESSUS, REPORTEZ-VOUS À LA PAGE 2 POUR LE NUMÉRO DE LA LISTE DES PIÈCES CORRESPONDANT.

D FALLS IHR GERÄT AUF VORSTEHENDER LISTE NICHT AUFGEFÜHRT IST, SUCHEN SIE IN DER TABELLE AUF SEITE 2 NACH DER ERSATZTEILLISTENNUMMER FÜR IHR GERÄT.

I SE LA VOSTRA UNITÀ NON SITROVA FRA QUELLE SOPRA ELENCATE, VEDERE LA TABELLA A PAGINA 2 PER TROVARE IL NUMERO DI CATALOGO DELLA VOSTRA UNITÀ.

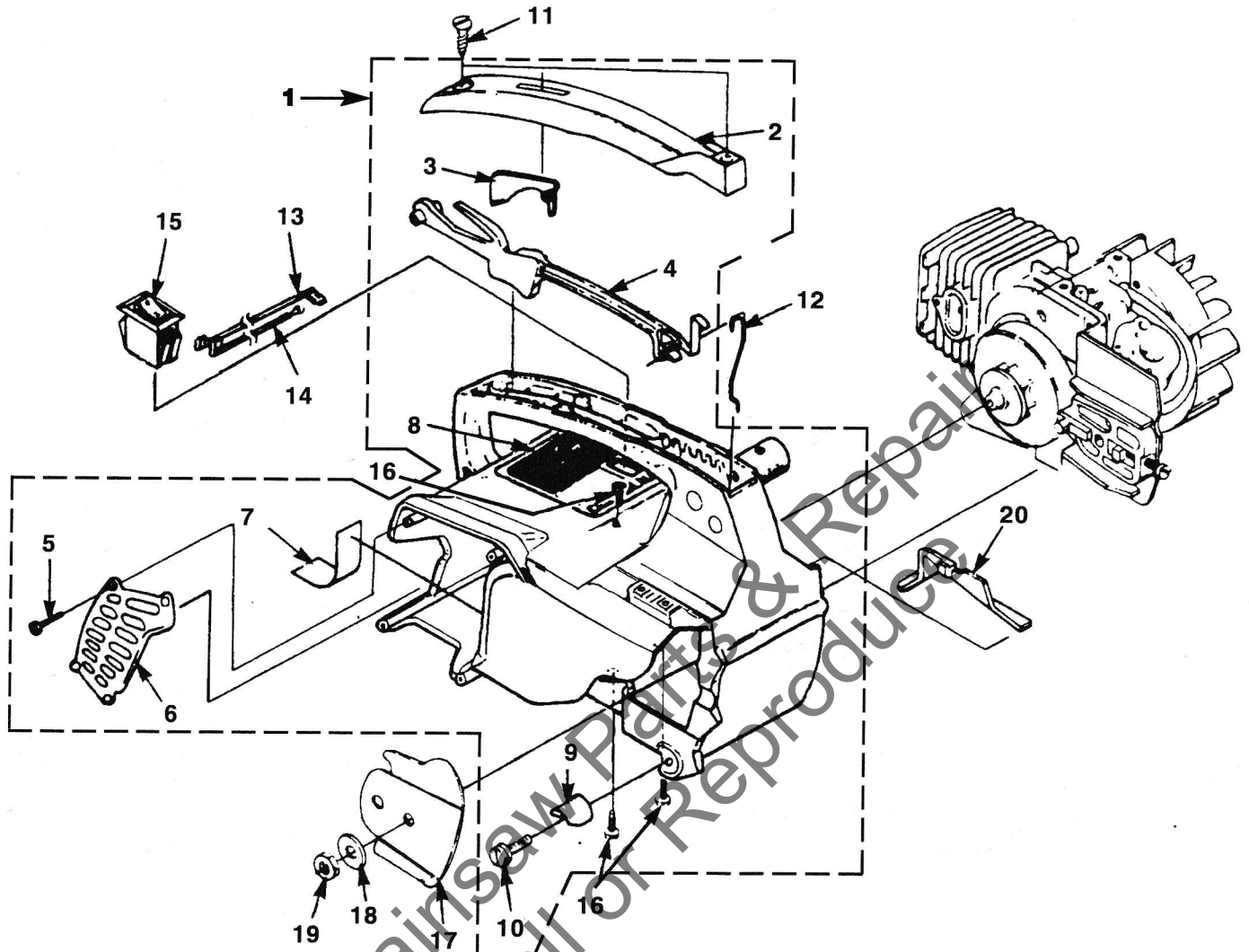
E SI SU UNIDAD NO FIGURA EN LA LISTA ANTERIOR, COSULTE LA TABLA DE LA PAGINA 2 PARA ENCONTRAR LOS NUMEROS DE LAS PARTES PARA LA MISMA.

Printed in U.S.A.
Imprimé aux. E.-U.
Gedruckt in U.S.A.
Stampato negli Stati Uniti
Impreso en EE. UU.
P/N PS01538

- GB PARTS LIST
- F LISTE DE PIÈCES
- D TEILELISTE
- I ELENCO DELLE PARTI
- E LISTA DE PIEZAS

	UT#	18866	18548	18663-1
180	10720			X
	10720-A, B, C, D	X		
	10721			X
	10721-A, B	X		
	10727, A, B	X		
192	10729, A, B, C	X		
200	10690		X	
	10690-A, B, C, D	X		
	10699		X	
	10699-A, B, C, D	X		
	10719		X	
	10719-A, B, C, D	X		
	10723		X	
	10723-A, B, C	X		
Super 2 SL	10701		X	
	10701-A, B, C	X		
	10728	X		
XL	10694			X
	10694-A, B, C	X		
	10695			X
	10695-1	X		
	10695-A, B	X		
	10722			X
	10722-A, B, C	X		
	10754		X	
Super 2	10696			X
	10696-A, B, C, D	X		
	10696-1, A1, B1, C1	X		
	10697			X
	10697-A, B, C, D	X		
Little Red	10740, A	X		
	10741	X		
	10748, A	X		

ENGINE HOUSING



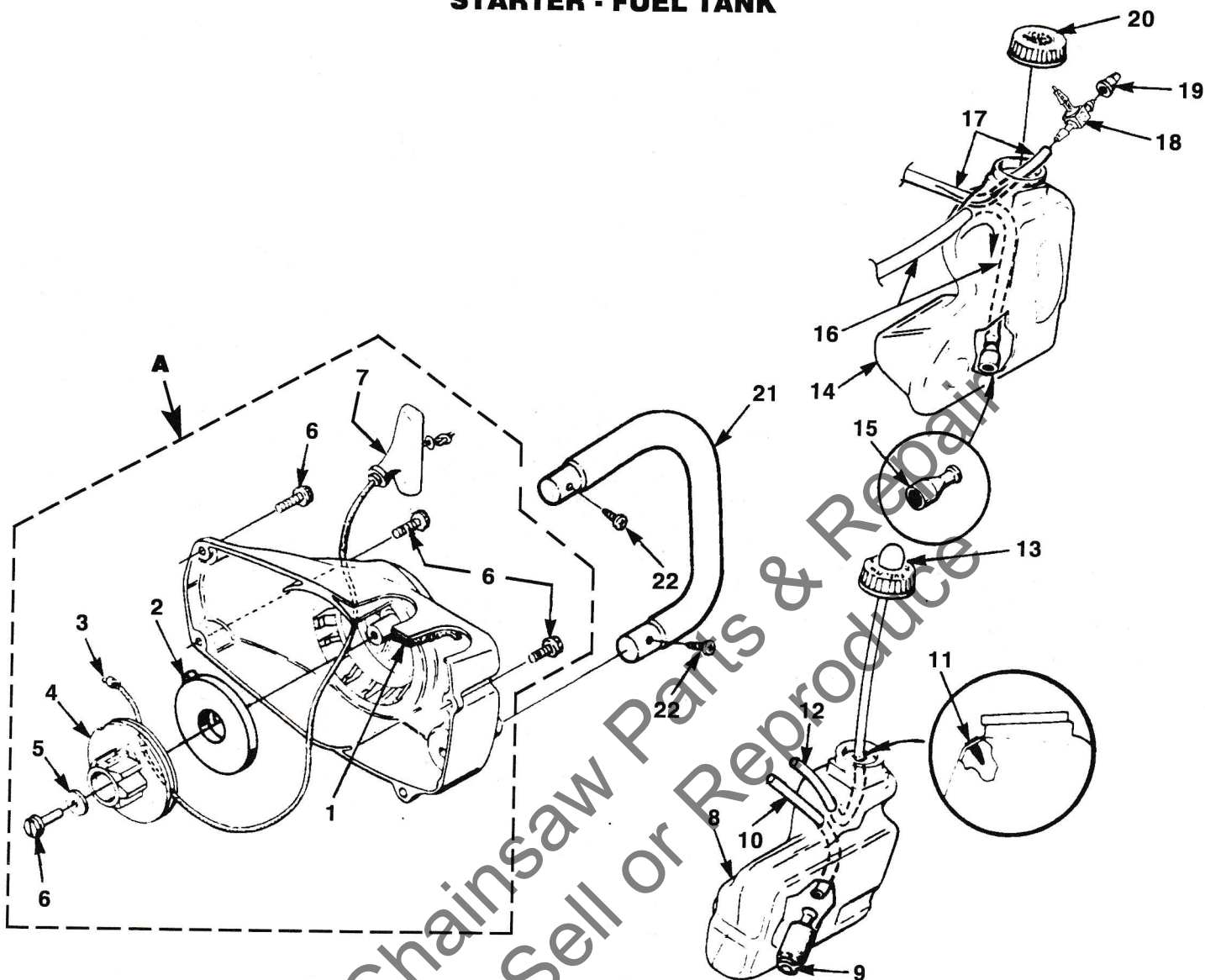
No.	Part No.	Description	Qty
1	A 07553	ENGINE HOUSING KIT	
2	02495	COVER- Handle	1
3	02493	LOCK- Trigger	1
4	02492 A	TRIGGER	1
5	82528	SCREW-Pan, plastite(#6 X 3/8")	4
6	02765	SHIELD- Muffler	1
7	95615	TAPE	2
8	02506	DECAL- Warning	1
9	95212	STOP- Chain	1
10	82563	SCREW- Torx, plastite (#10 X 3/4")	1

No.	Part No.	Description	Qty
11	94065	SCREW- Pan, plastite (#10-16 X 3/4")	2
12	02501	ROD- Throttle	1
13	A 02482	LEAD- w/Flag Term.	1
14	A 02484	LEAD- w/Ring Term.	1
15	02497	SWITCH	1
16	82538	SCREW- Torx, tapite (10-24 X 3/4")	4
17	04440	PLATE- Guide Bar	1
18	69309 A	WASHER- Flat	1
19	81065 2	NUT- Hex	1
20	02481 A	COVER-AIR Filter	1

Torque Specs			
Item No.	In/Lbs	Nm	Required Loctite
5	8-12	.9-1.4	
10	30-50	3.4-5.8	
11	15-20	1.7-2.3	
16	55-65	6.3-7.5	

Warranty Flat Rate		
Job	Description	Time/Hr.
FD12	Engine Housing	0.6
FA17	Ignition Switch	0.3
FF13	Throttle/Rod/Trigger	0.3
FK10	Guide Bar, Shims, Adj.	0.3
FA12	Ground Strap/Lead	0.3

STARTER - FUEL TANK



No.	Part No.	Description	Qty
A	06268 A	STARTER ASSY., Complete	1
1	69443	FILTER	1
2	A 97908	SPRING & CONTAINER	1
3	97899 01	ROPE- Starter (46')	1
	98052 A	ROPE- Starter (250 Ft. Reel)	1
4	97768 B	PULLEY- Starter	1
5	94062	WASHER- Retaining	1
6	82563	SCREW- Torx (#10 X 3/4")	5
7	02264	GRIP- Starter	1
8	A 06272	FUEL TANK	1
9	49422	FILTER- Fuel	1
10	07454 22	LINE- Fuel (5 1/2")	1
11	98819	VALVE- Duck Bill	1
12	07454 25	TUBING- Return (6 1/4")	1
	07454 99	TUBING- Rubber (10 Ft. Length)	1

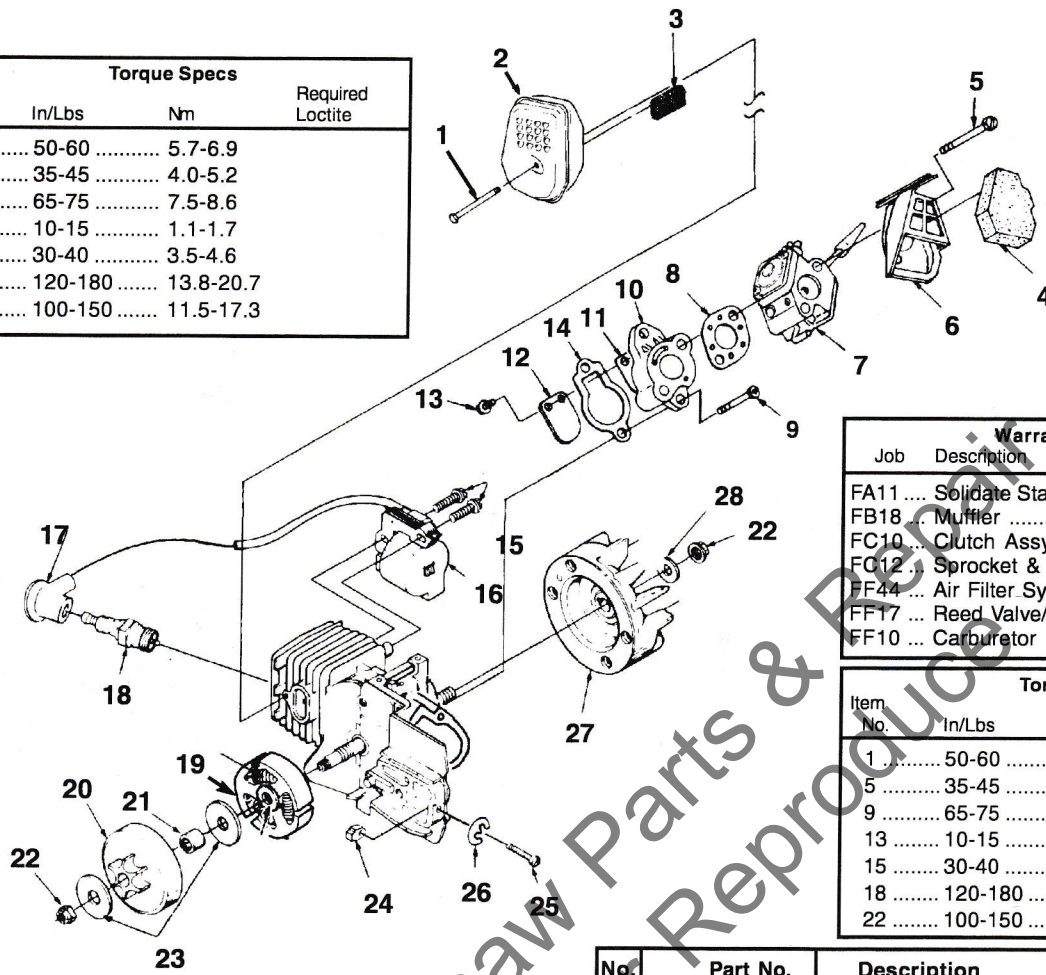
No.	Part No.	Description	Qty
13	A 01372 A	PRIMER & CAP	1
14	A 07554	OIL TANK	1
15	A 68593	FINDER- Oil	1
16	07454 32	TUBING- Rubber (8")	1
17	07454 20	TUBING- Rubber (5")	1
18	A 07508	FITTING- Vent	1
19	96841	VALVE- Check	1
20	A 97359 A	OIL CAP	1
21	A 07558	HANDLE BAR	1
22	94065	SCREW- Pan Plastite (#10-16 X 3/4")	2

Torque Specs			
Item No.	In/Lbs	Nm	Required Loctite
6	30-50	3.4-5.8	
22	15-20	1.7-2.3	

Warranty Flat Rate		
Job	Description	Time/Hr.
FD20	Handle Bar Assy	0.3
FG10	Starter Assy	0.3
FF12	Fuel Line	0.4
FF16	Fuel Tank	0.5
FE12	Oil Lines	0.4
FE14	Oil Tank	0.5
FF14	Primer Bulb	0.3

IGNITION-ROTOR-CARBURETOR-CLUTCH

Item No.	Torque Specs		Required Loctite
	In/Lbs	Nm	
1	50-60	5.7-6.9	
5	35-45	4.0-5.2	
9	65-75	7.5-8.6	
13	10-15	1.1-1.7	
15	30-40	3.5-4.6	
18	120-180	13.8-20.7	
22	100-150	11.5-17.3	



Warranty Flat Rate			
Job	Description	Time/Hr.	
FA11	Solidate State Module	0.3	
FB18	Muffler	0.3	
FC10	Clutch Assy	0.6	
FC12	Sprocket & Bearings	0.6	
FF44	Air Filter System	0.2	
FF17	Reed Valve/Manifold	0.7	
FF10	Carburetor Replace	0.5	

Item No.	Torque Specs		Required Loctite
	In/Lbs	Nm	
1	50-60	5.7-6.9	
5	35-45	4.0-5.2	
9	65-75	7.5-8.6	
13	10-15	1.1-1.7	
15	30-40	3.5-4.6	
18	120-180	13.8-20.7	
22	100-150	11.5-17.3	

PRESSURE PULSE LINE FROM CARBURETOR BRASS ELBOW TO DUCK BILL IN OIL TANK. 2 3/4" LONG. 07454-20

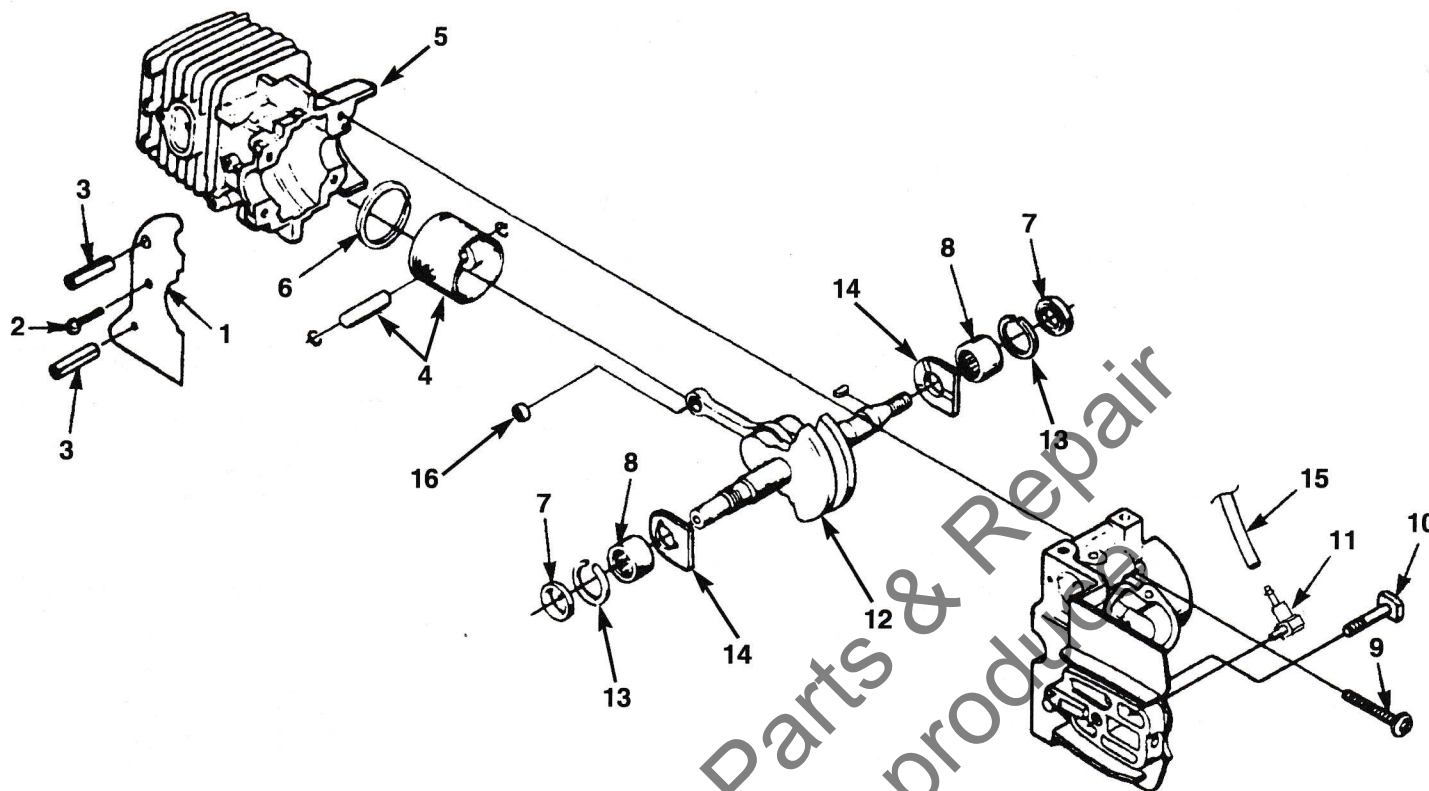
FROM OIL PICK-UP TO CHECK VALVE FITTING. 8" OVERALL LENGTH WITH 3 3/4" OUT OF TANK. **07454-32**

FUEL INLET LINE FROM PICK-UP TO FITTING ON BOTTOM OF CARBURETOR. 5 1/2" LONG OVERALL WITH 1 3/4" OUT OF TANK. **07454-22**

PRIMER INLET LINE FROM CARBURETOR FITTING UNDER ADJUSTING SCREWS TO PRIMER FITTING. 6 1/4" LONG WITH 2 1/2" OUT OF TANK. **07454-25**

No.	Part No.	Description	Qty
1	93460	SCREW-Machine Hex Sems (#8-32 X 3/4")	1
2	A 02459	MUFFLER	1
3	02458	SCREEN- Spark Arrestor	1
4	02500	FILTER- Air	1
5	00167	SCREW- Thread Forming	2
6	02491 A	BOX- Air Filter	1
7	A 01373 B	CARBURETOR (Zama)	1
8	02488	GASKET- Carburetor	1
9	82589	SCREW- Plastite, (10-14 X 1")	2
10	● A 02499	HEAT DAM	1
11	95983	REED	1
12	03205	STOP- Reed	1
13	82498	SCREW- Hex Taptite (4-40 X 3/8")	2
14	02453	GASKET- Intake Manifold	1-
15	82540	SCREW- Thread Forming (8-32 X 1")	2
16	● 94711 CS	MODULE- Ignition	1
17	A 33055	TERMINAL	1
18	96169 S	SPARK PLUG (Champion DJ7Y)	1
	79252	SPARK PLUG (Champion RDJ7Y)	1
19	A 97921 A	CLUTCH KIT	3
20	● A 95653 E	SPROCKET & DRUM	1
21	70277	BEARING	1
22	81229 A	NUT- Rotor (5/16-24)	2
23	95299	WASHER- Thrust	2
24	69254 2	PIN- Adjusting	1
25	● A 00440	SCREW & E-RING KIT	1
26	93574	E-RING	1
27	A 04158 S	ROTOR & STARTER PAWL	1
28	84065	WASHER- (5/16")	1

ENGINE INTERNAL



No.	Part No.	Description	Qty
1	02639	SAW DUST SHIELD	1
2	93932	SCREW- Tapping (#6-32 x 5/16")	1
3	70763	PIN- Roll (5/32 x 1 1/8") (Brake Model Only)	2
	• A 00132 1A	SHORT BLOCK (XL, [180 Canada])	1
	• UP 00068	SHORT BLOCK (XL, [180 Canada])**	1
4	A 04330	PISTON & PIN ASSY.	1
5	02485-5	CYLINDER	1
	UP 00069	CYLINDER **	1
6	93165	RING- Piston	1
7	07025	SEAL- Shaft	2
8	12530	BEARING- Needle	2
9	82567	SCREW- Torx Pan Hd. (10-24 x 1 1/8")	4
10	69195	BOLT- Guide Bar	1
11	07510	VALVE- Check	1
12	A 04602	CRANKSHAFT- Rod and Bearing	1
13	07025	SEAL - Shaft	2
14	03962	WASHER- Thrust	2

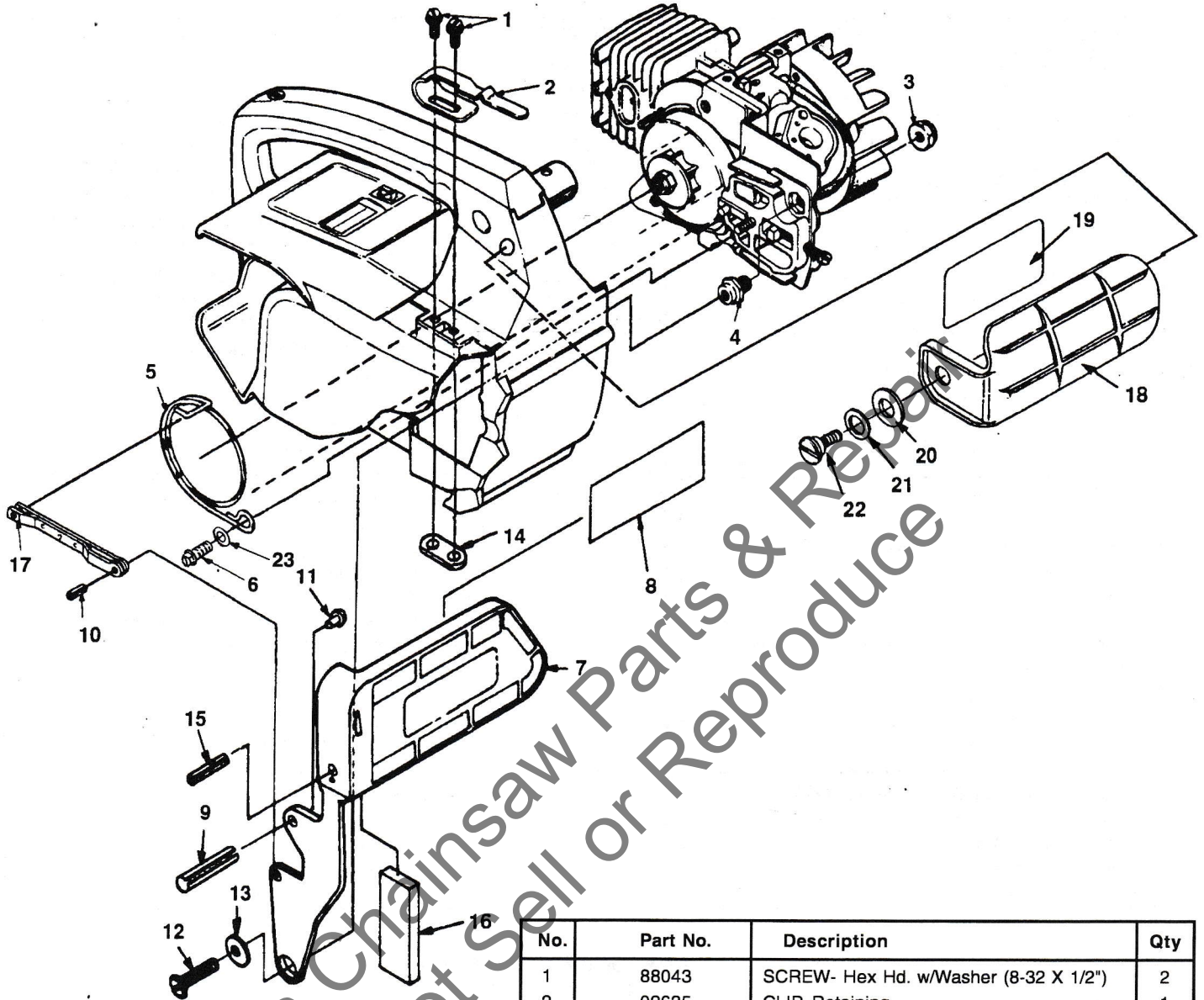
No.	Part No.	Description	Qty
1	02639	SAW DUST SHIELD	1
	• A 01105 A	SHORT BLOCK (192, Super 2, 200, Super 2 SL)	1
	• UP 00070	SHORT BLOCK (192, Super 2, 200, Super 2 SL) **	1
4	A 98967 A	PISTON & PIN ASSY.	1
5	04328 A	CYLINDER	1
	UP 00071	CYLINDER **	1
6	93165	RING- Piston	1
7	07025	SEAL- Shaft	2
8	12530	BEARING- Needle	2
9	82567	SCREW- Torx Pan Hd. (10-24 x 1 1/8")	4
10	69195	BOLT- Guide Bar	1
11	07510	VALVE- Check	1
12	A 97611 A	CRANKSHAFT- Rod and Bearing	1
13	07025	SEAL z- Shaft	2
14	03962	WASHER- Thrust	2
15	07454 32	TUBING- Rubber (Oil Line) (8")	1
	07454 99	TUBING- Rubber (Oil Line) (10')	1
16	02035	BEARING- Wrist Pin	1

** After Serial Number HR0010001

Torque Specs			
Item No.	In/Lbs	Nm	Required Loctite
2	18-24	2.0-2.8	
9	65-75	7.5-8.6	

Warranty Flat Rate		
Job	Description	Time/Hr.
FB20	Short block	1.0
FB15	C/Case Seal (per side)	0.4
FK11	Guide Bar Studs	0.5

HANDGUARD



Leon's Chainsaw Parts & Repair
Do Not Sell or Reproduce

Torque Specs			
Item No.	In/Lbs	Nm	Required Loctite
1	25-30	2.8-3.4	
6	55-65	6.3-7.5	
12	40-50	4.6-5.7	
22	40-50	4.6-5.7	

Warranty Flat Rate		
Job	Description	Time/Hr.
FD10 ...	SL Chain Brake	0.3

No.	Part No.	Description	Qty
1	88043	SCREW- Hex Hd. w/Washer (8-32 X 1/2")	2
2	02635	CLIP- Retaining	1
3	81124 A	NUT- Hex, Jam	1
4	70636	POST- Chain Brake	1
5	70637 C	BAND- Brake	1
6	82538	SCREW- Thread Form (10-24 x 3/4")	1
7	• A 03061 A	HANDGUARD & LEVER (200, Super 2 SL)	1
8	02661	DECAL- Safety	1
9	JA 46138 3	PIN- Roll (3/16 X 1")	1
10	95395 A	PIN- Roll	1
11	82367	SCREW- Drive	1
12	82166	SCREW- Machine, Pan Hd. (10-32 X 1/2")	1
13	70632	WASHER- Flat	1
14	02637	NUT- Weld	1
15	JA 46136 1	PIN- Roll	1
16	07567	WEIGHT- Handle (International Only)	1
17	A 70767	PIVOT- Link	1
18	• A 70796 C	HANDGUARD KIT (Super 2, XL, 180 & 192)	1
19	02661	DECAL- Handguard	1
20	95694	WASHER- Curve Spring	1
21	96102	WASHER- Flat	1
22	95714	SCREW- Shoulder	1
23	84008	WASHER- Flat (#10)	1

ACCESSORIES

<p>SAFE T TIP (Standard) A-70776-B GREASE-Multi Purpose 18453 Graisse universelle Mehrzweck-Schmiermittel Grasso, multiuso Grasa de uso general</p>	<p>GUIDE BAR Guide barre Schwert Lama Barra Guia</p>	<p>CHAIN Chaîne Kette Catena Cadena</p>
<p>KIT-Repair (sprocket nose bar) A-70239-E Jeu de réparation (lame à nez à pignon) Reparatursatz (Kettenrad-Nesenspitze) Kit per riparazioni (denta punta lama) Juego de reparacion (extremo barra rueda dentada)</p>	<p>HT-10001-O4 HI-N7242-AH (35-MD50-42) HT-12001-O4 HI-N7248-BH (35-MD50-48) PT-12371-O4 HI-N7248-BH (35-MD50-48) PT-14371-O4 HI-N7253-AH (35-MD50-53) PT-16371-O4 HI-N7259-AH (35-MD50-53) PT-18371-O4 HI-N7264-AH (35-MD50-64)</p>	
<p>TOOLS OUTILS WERKZEUGE ATTREZZI HERAMIENTAS</p>	<p>IGNITION TEST SPARK PLUG JA 31316 4 Testeur d'allumage Testzündkerze für Zündprüfung Candela di collaudo Bujía para probar el encendido</p>	
<p>WRENCH (combination) D-24814-B Clé combiné Schraubenschlüssel Kombination Chiave combinata Llave combinada</p>	<p>SHIM (0.015" AIR GAP) 22486 Cale (écart de 0,38 mm) Distanzscheibe (0,38 mm Luftspalt) Spessore (spinterometro 0,38 mm) Suplemento (espacio de 0,38 mm)</p>	
<p>SILASTIC (crankcase sealing) PS24823 Silastic (étanchéité du carter) Silastic (Kubelgehäuse Dichtung) Silastic (sigillo di tenuta del carter) Silastic (sello del carter)</p>	<p>T25 TORX DRIVE BIT 24982-01 Foret torx T-25 T-25 Torx-Antriebsbit Punta Torx Drive T-25 Broca de empuje T-25 Torx</p>	
<p>PULLER-Magneto Rotor A-24747-A Extracteur, rotor magnéto Abziehwerkzeug-Magnetrotor Rotore d'estrazione a magnete Extractor-rotor de magneto</p>	<p>T27 TORX DRIVE BIT 18566-01 Foret torx T-27 T-27 Torx-Antriebsbit Punta Torx Drive T-27 Broca de empuje T-27 Torx</p>	

CUSTOMER ASSISTANCE

FOR THE LOCATION OF YOUR
 NEAREST HOMELITE SERVICING DEALER IN THE UNITED STATES, PUERTO RICO, AND THE VIRGIN ISLANDS,
CALL: 1-800-242-4672

HEADQUARTERS

John Deere Consumer Products, Inc.
 P. O. BOX 7047
 CHARLOTTE, NC 28241

OVERSEAS OFFICES

EUROPE, AFRICA & MIDDLE-EAST

Homelite Netherlands B.V.
 A Deere & Company Affiliate
 Haverstraat 24
 2153 GB Nieuw Vennep
 The Netherlands
 tel: +31-252-687342 / fax: +31-252-687993

FRANCE

Homelite Atlantic SARL
 Groupe Deere & Co.
 Rue du Paradis - BP 231 - Ormes
 45144 Saint-Jean-De-La-Ruelle
 Cedex, France

AUSTRALIA

John Deere Limited
 A.C.N. 008 671 725
 166-170 Magnesium Drive
 Crestmead, Queensland 4132
 Australia

CANADIAN OFFICE

John Deere Consumer Products Limited
Produits consommateurs
John Deere Limitée

1850-55e/th Avenue
 Lachine, Québec, Canada H8T 3J5
 1-800-363-5715

John Deere Consumer Products, Inc.