

# HOMELITE®

- GB** PARTS LIST
- F** LISTE DE PIÈCES
- D** TEILELISTE
- E** LISTA DE PIEZAS
- I** ELENCO DELLE PARTI

**180** UT-10720-A  
UT-10721-A  
UT-10727

**192** UT-10729

**200** UT-10690-A  
UT-10699-A  
UT-10719-A  
UT-10723-A

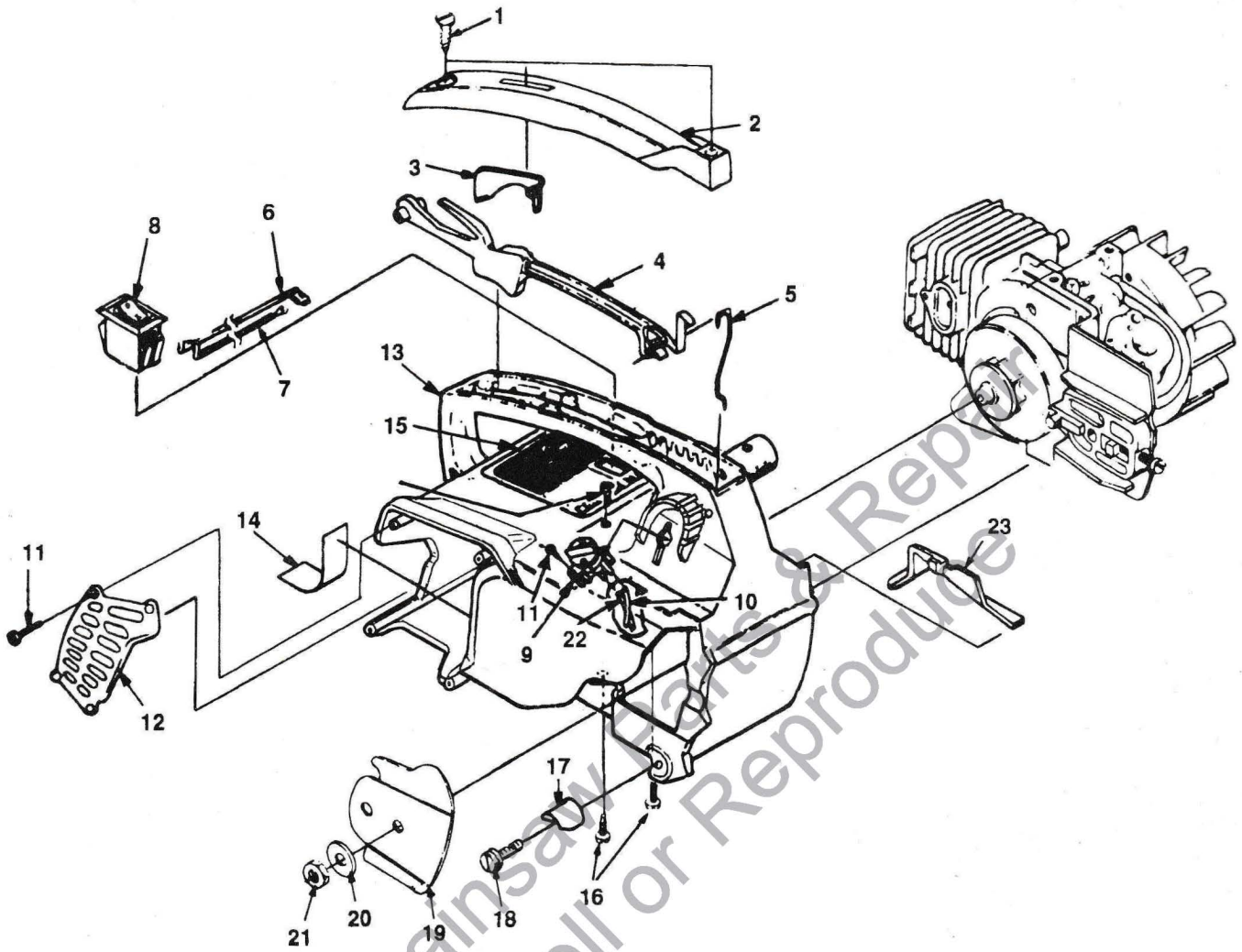
**SUPER 2 SL** UT-10701-A  
UT-10728

**XL** UT-10694-A  
UT-10695-A  
UT-10722-A

**SUPER 2** UT-10696-A  
UT-10697-A



Printed in U.S.A.  
Imprimé aux. E.-U.  
Gedruckt in U.S.A.  
Impreso en EE. UU.  
Stampato negli Stati Uniti  
**P/N 18866**



N	PN	D	Q
1	94065	SCREW-Pan, plastite (#10-16 X 3/4")	2
2	02495	COVER-Handle	1
3	02493	LOCK-Trigger	1
4	02492-A	TRIGGER	1
5	02501	ROD-Throttle	1
6	A-02482	LEAD-w/Flag Term.	1
7	A-02484	LEAD-w/Ring Term.	1
8	02497	SWITCH	1
9	A-01147	OIL VALVE	1
10	70310-17	TUBING-Rubber (4 1/4")	1
11	82528	SCREW-Pan plastite (#6 X 3/8")	5
12	02765	SHIELD-Muffler	1
13	•A-01232	HOUSING-Engine	1
14	95615	TAPE	2
15	02490-A	DECAL-Warning	1

N	PN	D	Q
16	82538	SCREW-Torx, taptite (10-24 X 3/4")	4
17	95212	STOP-Chain	1
18	82563	SCREW-Torx, plastite (#10 X 3/4")	1
19	69360-A	PLATE-Guide Bar	1
20	69309-A	WASHER-Flat	1
21	81065-2	NUT-Hex	1
22	70310-32	TUBING- Rubber (8")	1
23	02481	COVER- Air Filter	1

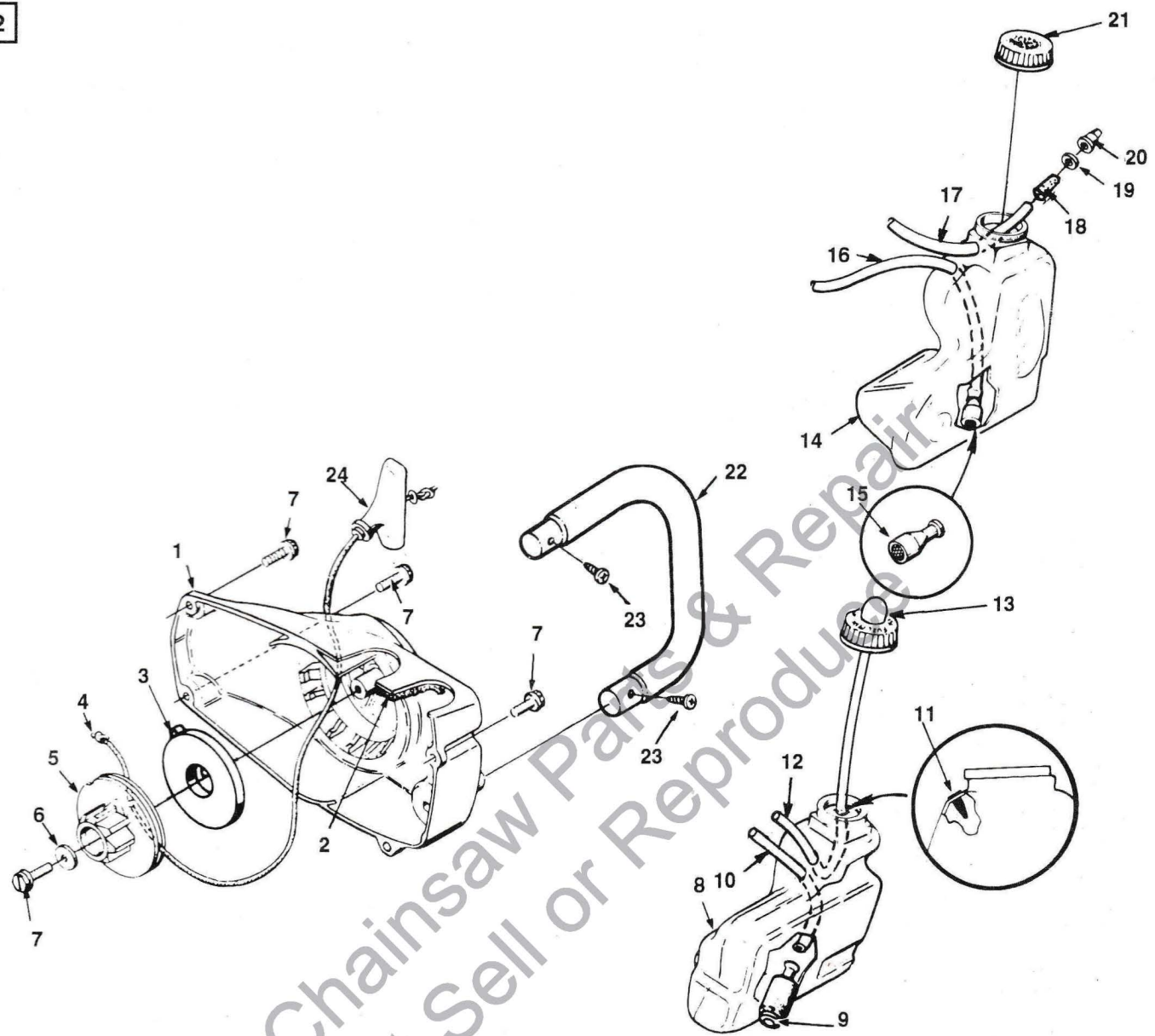
Assembly  
Ensembles  
Bausätze  
Compressi  
Conjuntos

No.  
N°  
Nr.  
N°  
No.

Part No.  
Piece N°  
Teil Nr.  
Pezzo N°  
No. de pieza

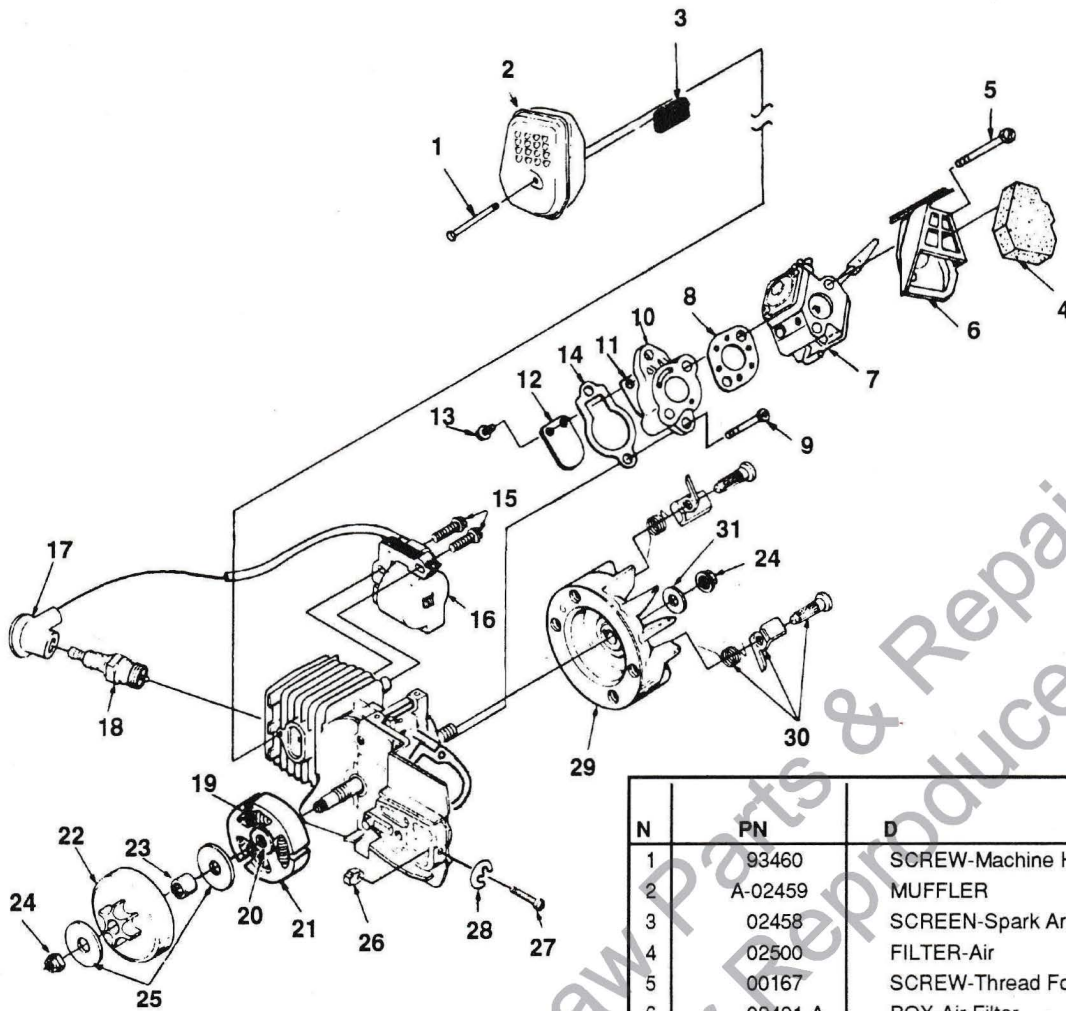
DESCRIPTION — D

Qty.  
Quantité  
Menge  
Quantita  
Cantidad



N	PN	D	Q
1	• A-02562-B	STARTER HOUSING ASSY.	1
2	69443	FILTER	1
3	A-97908	SPRING & CONTAINER	1
4	97899-01	ROPE-Starter (46")	1
	98052-A	ROPE- Starter (250 Ft. Reel)	1
5	97768-A	PULLEY-Starter	1
6	94062	WASHER-Retaining	1
7	82563	SCREW-Torx (#10 x 3/4")	5
8	• A-02764-1	FUEL TANK	1
9	49422	FILTER- Fuel	1
10	70310-22	LINE-Fuel (5 1/2")	1
11	98819	VALVE-Check	1
12	70310-25	TUBING-Return (6 1/4")	1

N	PN	D	Q
	70310-99	TUBING- Rubber (10 Ft. Length)	1
13	A-01372-A	PRIMER & CAP	1
14	• A-02763-1	OIL TANK	1
15	A-68593	FINDER-Oil	1
16	70310-32	TUBING-Rubber (8")	1
17	70310-19	TUBING-Rubber (4 3/4")	1
18	69659-B	FITTING-Oil	1
19	83004	WASHER- Lock	1
20	98819	VALVE-Check	1
21	A-97230-A	OIL CAP	1
22	02496	HANDLE BAR	1
23	94065	SCREW- Pan Plastite (#10-16 x 3/4")	2
24	02264	GRIP-Starter	1



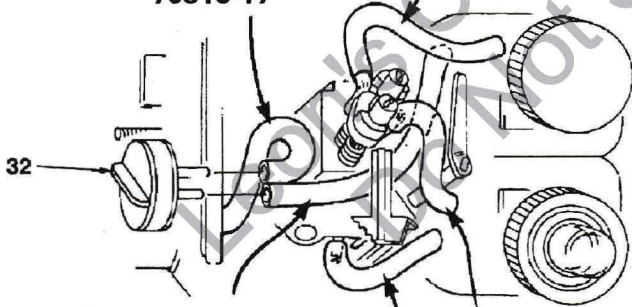
PRESSURE PULSE LINE FROM CARBURETOR BRASS ELBOW TO DUCK BILL IN OIL TANK 4 3/4" LONG. **70310-19**

OULET OIL FITTING TO GUIDE BAR PAD FITTING. 4" LONG. **70310-17**

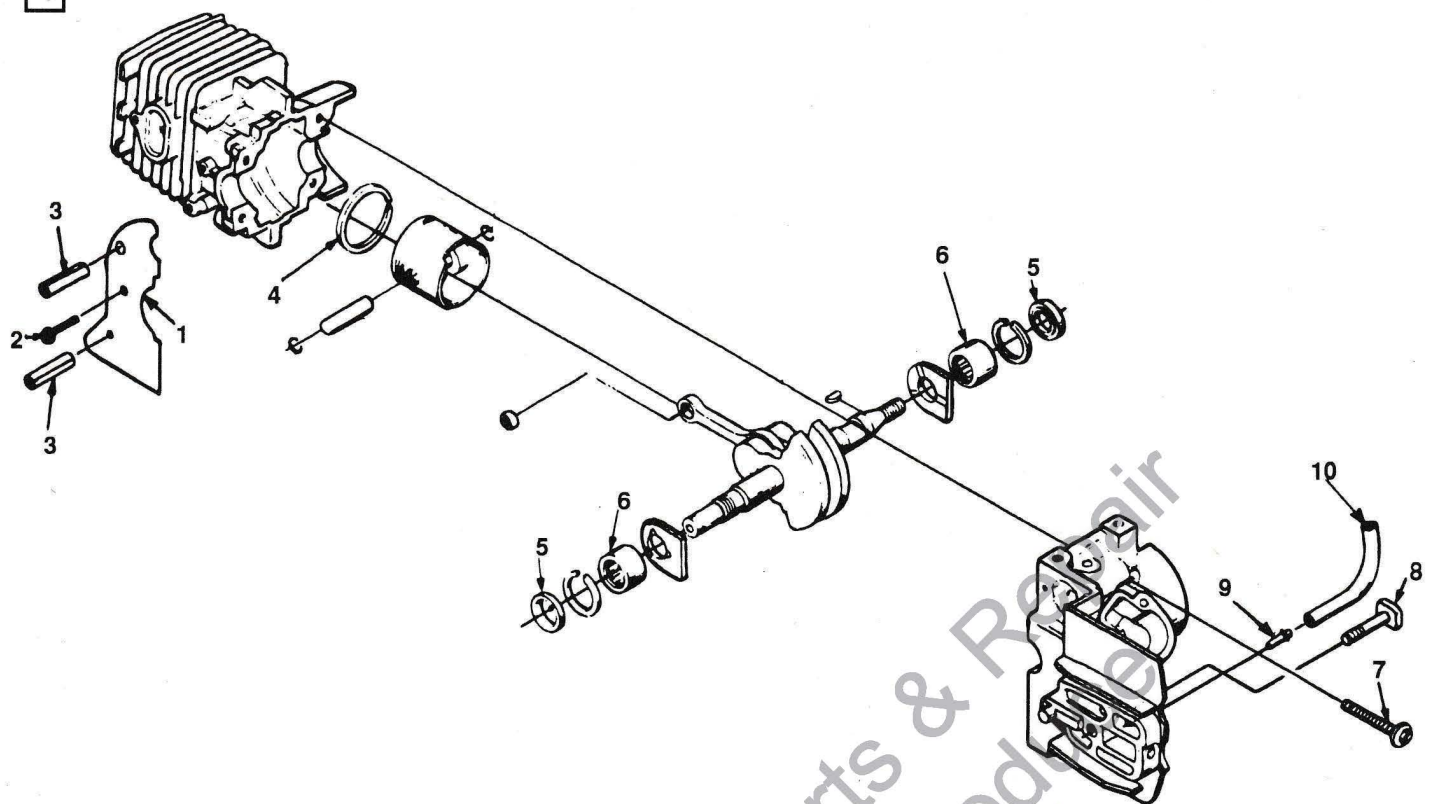
FROM OIL PICK UP TO CENTRAL VALVE FITTING. 8" OVERALL LENGTH WITH 4 1/2" OUT OF TANK. **70310-32**

FUEL INLET LINE FROM PICK UP TO FITTING ON BOTTOM OF CARBURETOR. 5 1/2" LONG OVERALL AND 1 3/4" OUT OF TANK. **70310-22**

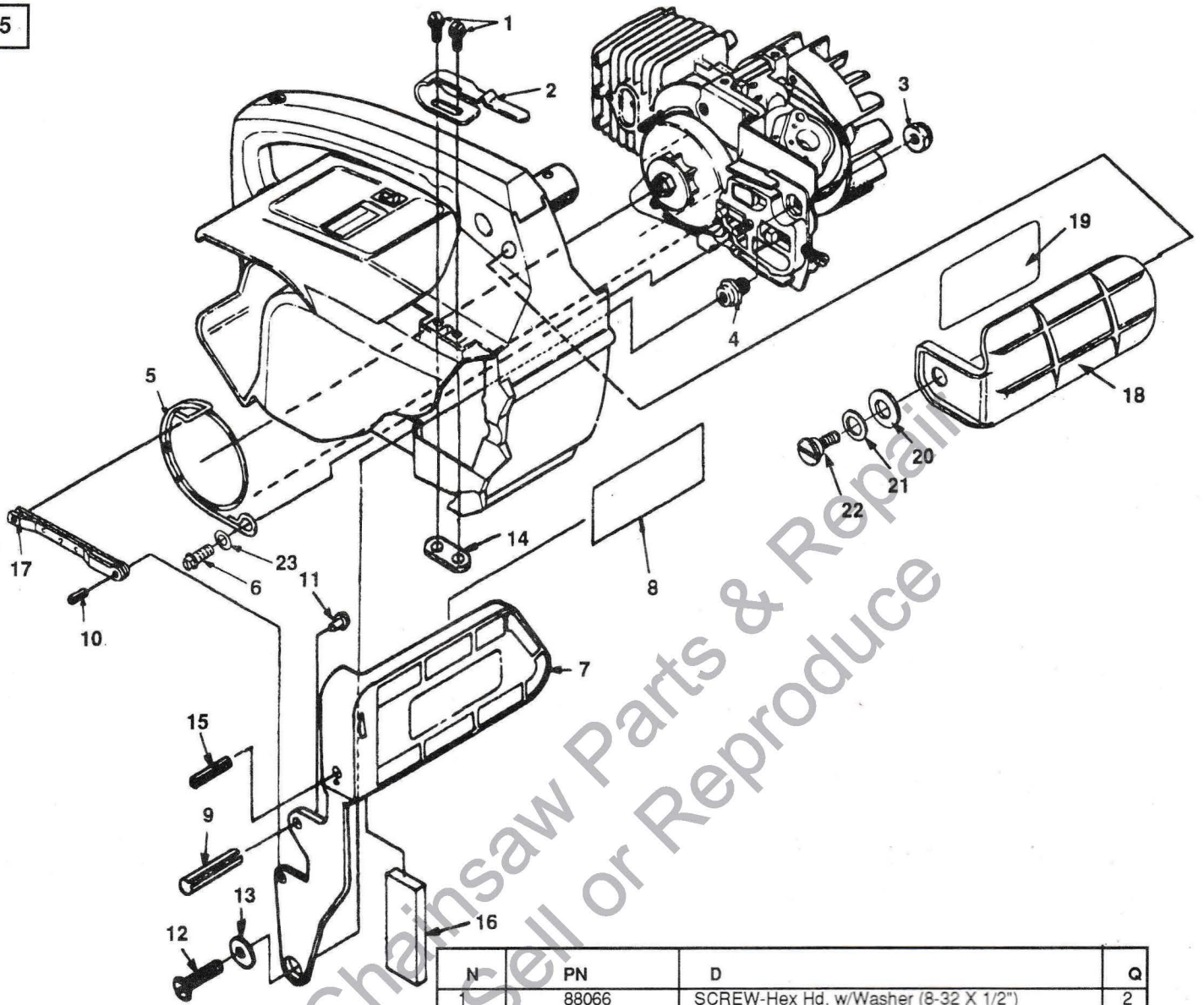
PRIMER INLET LINE FROM CARBURETOR FITTING UNDER ADJUSTING SCREWS TO PRIMER FITTING. 6 1/4" LONG, W/2 1/2" OUT OF TANK. **70310-25**



N	PN	D	Q
1	93460	SCREW-Machine Hex Sems (#8 -32 X 3/4")	1
2	A-02459	MUFFLER	1
3	02458	SCREEN-Spark Arrestor	1
4	02500	FILTER-Air	1
5	00167	SCREW-Thread Forming	2
6	02491-A	BOX-Air Filter	1
7	A-01373	CARBURETOR (Zama)	1
8	02488	GASKET-Carburetor	1
9	82589	SCREW-Plastite, (10-14 X 1")	2
10	• A-02499	HEAT DAM	1
11	95983	REED	1
12	03205	STOP-Reed	1
13	82498	SCREW-Hex Taptite (4-40 X 3/8")	2
14	02453	GASKET-Intake Manifold	1-
15	82540	SCREW-Thread Forming (8-32 X 1")	2
16	• 94711-CS	MODULE-Ignition	1
17	A-33055	TERMINAL	1
18	96169-S	SPARK PLUG (Champion DJ7Y)	1
	79252	SPARK PLUG (Champion RDJ7Y)	1
19	03961	SPRING-Clutch	3
20	79221	SPIDER-Clutch	1
21	79222-A	SHOE-Clutch	3
22	• A-95653-C	SPROCKET & DRUM	1
23	70277	BEARING	1
24	81229	NUT-Rotor (5/16-24)	2
25	95299	WASHER-Thrust	2
26	69254-2	PIN-Adjusting	1
27	• A-00440	SCREW & E-RING KIT	1
28	93574	E-RING	1
29	• A-04158	ROTOR & STARTER PAWL	1
30	A-70285-E	STARTER PAWL KIT	1
31	84065	WASHER-(5/16")	1
32	A-01147	OIL VALVE	1



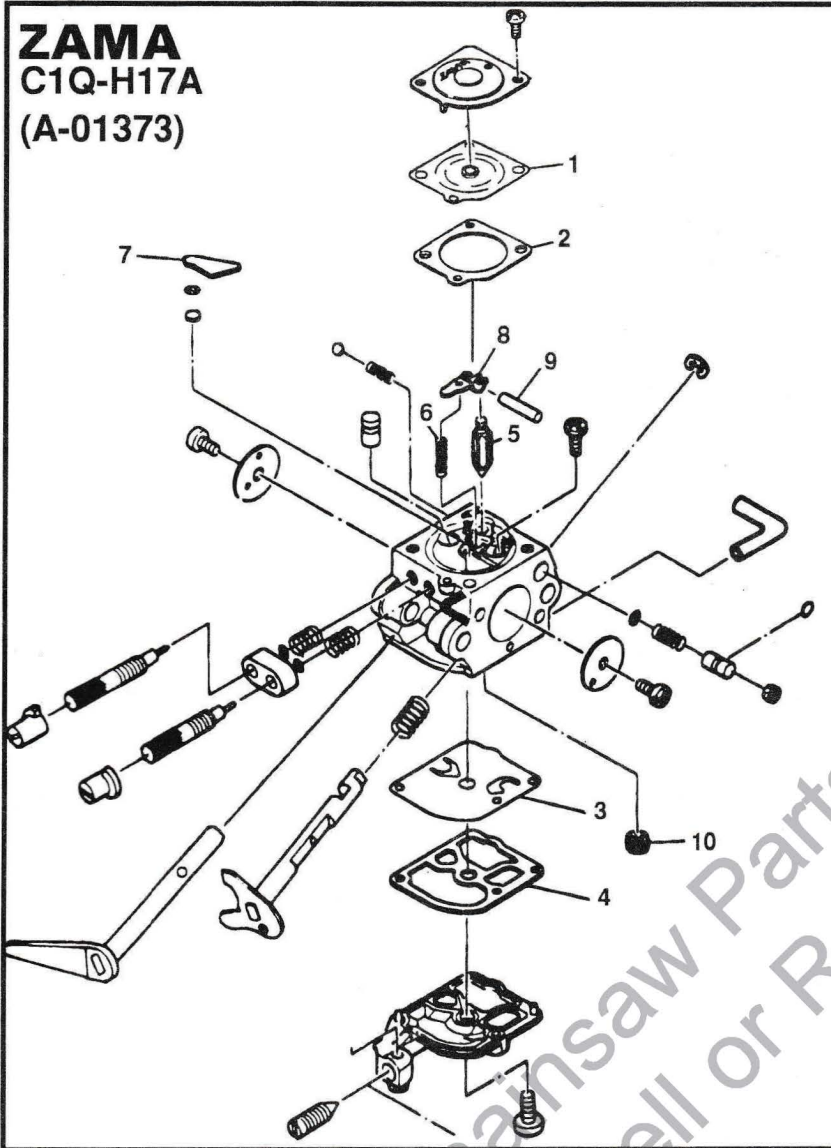
N	PN	D	Q
1	02639	SAW DUST SHIELD	1
2	93932	SCREW- Tapping (#6-32 x 5/16")	1
3	70763	PIN- Roll (5/32 x 1 1/8") (Brake Model Only)	2
	• A- 00132-1	SHORT BLOCK (XL , 180)	1
4	93165	RING- Piston	1
5	94638	SEAL- Shaft	2
6	12530	BEARING- Needle	2
7	82567	SCREW- Torx Pan Hd. (10-24 x 1 1/8")	4
8	69195	BOLT- Guide Bar	1
9	94619	FITTING- Tube	1
	• A- 01105	SHORT BLOCK (192, Super 2, 200, Super 2 SL))	1
	93165	RING- Piston	1
	94638	SEAL- Shaft	2
	12530	BEARING- Needle	2
	82567	SCREW- Torx Pan Hd. (10-24 x 1 1/8")	4
	69195	BOLT- Guide Bar	1
	94619	FITTING- Tube	1
10	70310-17	TUBING- Rubber (Oil Line) (4 1/4")	1
	70310-99	TUBING- Rubber (Oil Line) (10 Ft. Length)	1



Leon's Chainsaw Parts & Repair  
Do Not Sell or Reproduce

N	PN	D	Q
1	88066	SCREW-Hex Hd. w/Washer (8-32 X 1/2")	2
2	02635	CLIP-Retaining	1
3	81124-A	NUT-Hex, Jam	1
4	70636	POST-Chain Brake	1
5	70637-C	BAND-Brake	1
6	82538	SCREW-Thread Form (10-24 x 3/4")	1
7	• A-03061-A	HANDGUARD & LEVER (200, Super 2 SL)	1
8	02661	DECAL-Safety	1
9	JA-46138-3	PIN-Roll (3/16 X 1")	1
10	95395-A	PIN-Roll	1
11	82367	SCREW-Drive	1
12	82166	SCREW-Machine, Pan Hd. (10-32 X 1/2")	1
13	70632	WASHER-Flat	1
14	02637	NUT-Weld	1
15	JA-46136-1	PIN-Roll	1
16	02462	WEIGHT-Handle ( International Only)	1
17	A-70767	PIVOT-Link	1
18	• A-70796-C	HANDGUARD KIT (Super 2, XL, 180 & 192 )	1
19	02661	DECAL-Handguard	1
20	95694	WASHER-Curve Spring	1
21	96102	WASHER-Flat	1
22	95714	SCREW-Shoulder	1
23	84008	WASHER- Flat (#10)	1

**ZAMA**  
**C1Q-H17A**  
**(A-01373)**



**ACCESSORIES**  
**ACCESSOIRES**  
**ZEBEHÖR**  
**ACCESSORIES**  
**ACCESORIOS**

**SAFE T TIP (Standard) DA-70776-B**

**GREASE-Multi Purpose 18453**

Graisse universelle  
 Mehrzweck-Schmiermittel  
 Grasso, multiuso  
 Grasa de uso general

**KIT-Repair (sprocket nose bar) A-70239-E**

Jeu de réparation (lame à nez à pignon)  
 Reparatursatz (Kettenrad-Nesenspitze)  
 Kit per riparazioni (denta punta lama)  
 Juego de reparacion (extremo barra rueda dentada)

**CARRYING CASE A-01501**

Boîtier de transport  
 Tragekasten  
 Custodia  
 Maletín

**REPAIR KIT.....(1-10) A-01375**

Jeu de réparation  
 Reparatursatz  
 Juego de reparación  
 Kit per riparazioni

**GASKET/DIAPHRAGM KIT.....(1-4) A-03904**

Jeu joint/diaphragme  
 Dichtung/Membrane-Satz  
 Conjunto junta/diafragma  
 Kit diagramma/guarnizione

**TOOLS**  
**OUTILS**  
**WERKZEUGE**  
**ATTREZZI**  
**HERAMIENTAS**

**WRENCH (combination) D-24814-A**

Clé combiné  
 Schraubenschlüssel Kombination  
 Chiave combinatã  
 Llave combinada

**SILASTIC (crankcase sealing) 24823**

Silastic (étanchéité du carter)  
 Silastic (Kubelgehäuse Dichtung)  
 Silastic (sigillo di tenuta del carter)  
 Silastic (sello del carter)

**PULLER-Magneto Rotor A-24747-A**

Extracteur, rotor magnéto  
 Abziehwerkzeug-Magnetrotor  
 Rotore d'estrazione a magnete  
 Extractor-rotor de magneto

**IGNITION TEST SPARK PLUG JA-31316-4**

Testeur d'allumage  
 Testzündkerze für Zündprüfung  
 Candela di collaudo  
 Bujía para probar el encendido

**SHIM (0.015" AIR GAP) 22486**

Cale (écart de 0,38 mm)  
 Distanzscheibe (0,38 mm Luftspalt)  
 Spessore (spinterometro 0,38 mm)  
 Suplemento (espacio de 0,38 mm)

**T25 TORX DRIVE BIT 24982-01**

Foret torx T-25  
 T-25 Torx-Antriebsbit  
 Punta Torx Drive T-25  
 Broca de empuje T-25 Torx

**T27 TORX DRIVE BIT 18566-01**

Foret torx T-27  
 T-27 Torx-Antriebsbit  
 Punta Torx Drive T-27  
 Broca de empuje T-27 Torx

**SYMBOL DEFINITIONS  
DEFINITIONS DES SYMBOLES  
ERKLÄRUNG DER WARNSYMBOL  
DEFINIZIONI DEI SIMBOLI  
SIGNIFICADO DE LOS SIMBOLOS**



**DANGER!  
DANGER!  
GEFAHR!  
¡PELIGRO!  
PERICOLO!**

**READ YOUR PRODUCT LITERATURE.  
LIRE LES PUBLICATIONS SUR LE PRODUIT.  
DIE MASCHINEN-BESCHREIBUNGEN UND ANLEITUNGEN LESEN.  
LEER EL MANUAL DEL PRODUCTO.  
LEGGERE LA DOCUMENTAZIONE DEL PRODOTTO.**

**WEAR HEARING AND EYE PROTECTION DEVICES.  
PORTER DES PROTEGE-OREILLES ET UNE PROTECTION DES YEUX.  
OHREN-UND AUGENSCHUTZ TRAGEN.  
USAR EQUIPO DE PROTECCIÓN DE OÍDOS Y OJOS.  
INDOSSARE AURICOLARI ED OCCHIALI PROTETTIVI.**

**CUSTOMER ASSISTANCE**

**FOR THE LOCATION OF YOUR NEAREST HOMELITE SERVICING DEALER IN THE UNITED STATES, PUERTO RICO, AND THE VIRGIN ISLANDS.**

**CALL: 1-800-242-4672**

**NOTE: DEALER INFORMATION, TECHNICAL ADVICE AND PRODUCT INFORMATION CAN BE OBTAINED AT THIS NUMBER.**

**HEADQUARTERS**

**HOMELITE DIVISION OF TEXTRON INC.  
P.O. BOX 7047  
CHARLOTTE, N.C. 28241**

**OVERSEAS OFFICES**

**NETHERLANDS**

**HOMELITE TEXTRON  
DIVISION OF TEXTRON ATLANTIC  
(HDQS. — Europe, Africa and Middle East)  
Haverstraat 24  
2153 GB Nieuw Vennepe  
The Netherlands**

**FRANCE**

**HOMELITE TEXTRON  
UNE DIVISION DE TEXTRON  
S.A.R.L.  
Z.I. du Vert-Galant  
Rue du Chateau/Rue de la Garenne  
95310 Saint-Quen-L'Aumone  
France**

**AUSTRALIA**

**HOMELITE DIVISION OF TEXTRON PACIFIC LIMITED  
HEADQUARTERS  
22 Terra - Cotta Drive  
Blackburn, 3130  
Victoria, Australia**

**CANADIAN OFFICES**

**HOMELITE**

**DIVISION OF TEXTRON CANADA LIMITED  
1850 55th Avenue  
Lachine, Quebec, Canada  
H8T 3J5**

**212-214 590 Ebury Place  
New Westminster, B.C.  
V3M 6K7**

**595 Canarctic Drive  
Toronto, Ontario  
M3J 2P9**

**HOMELITE TEXTRON**

Homelite Division of Textron Inc.