

REVISED 1979\*  
**Parts  
List**

**PART NO. 17368**  
Printed in U.S.A.  
Price. 35

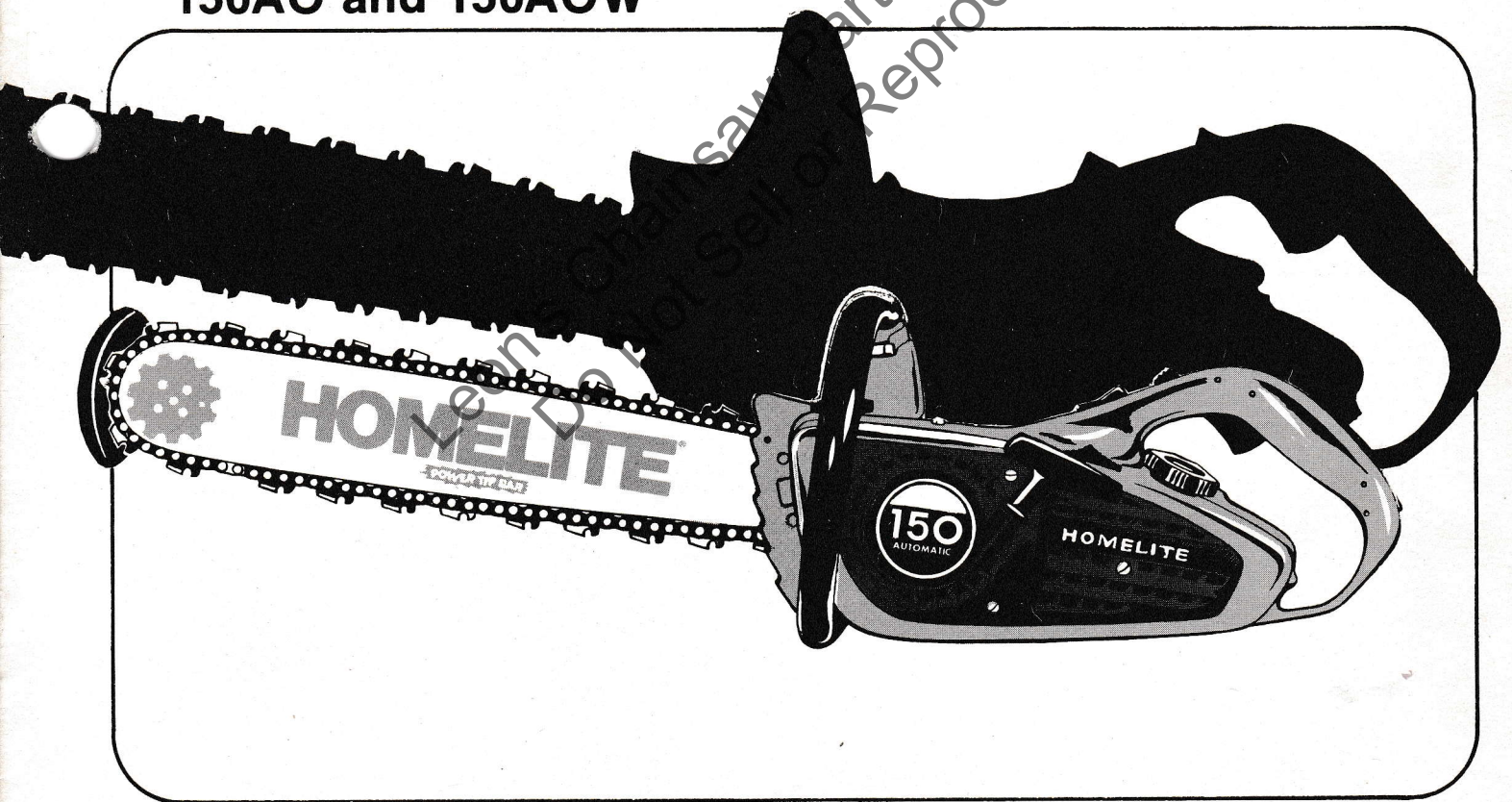
\*See Parts List No. 24535 for  
earlier Model 150 components.

# 150

## *Automatic* **CHAIN SAW**

**MODELS**

**150AO and 150AOW**



**HOMELITE** **TEXTRON**

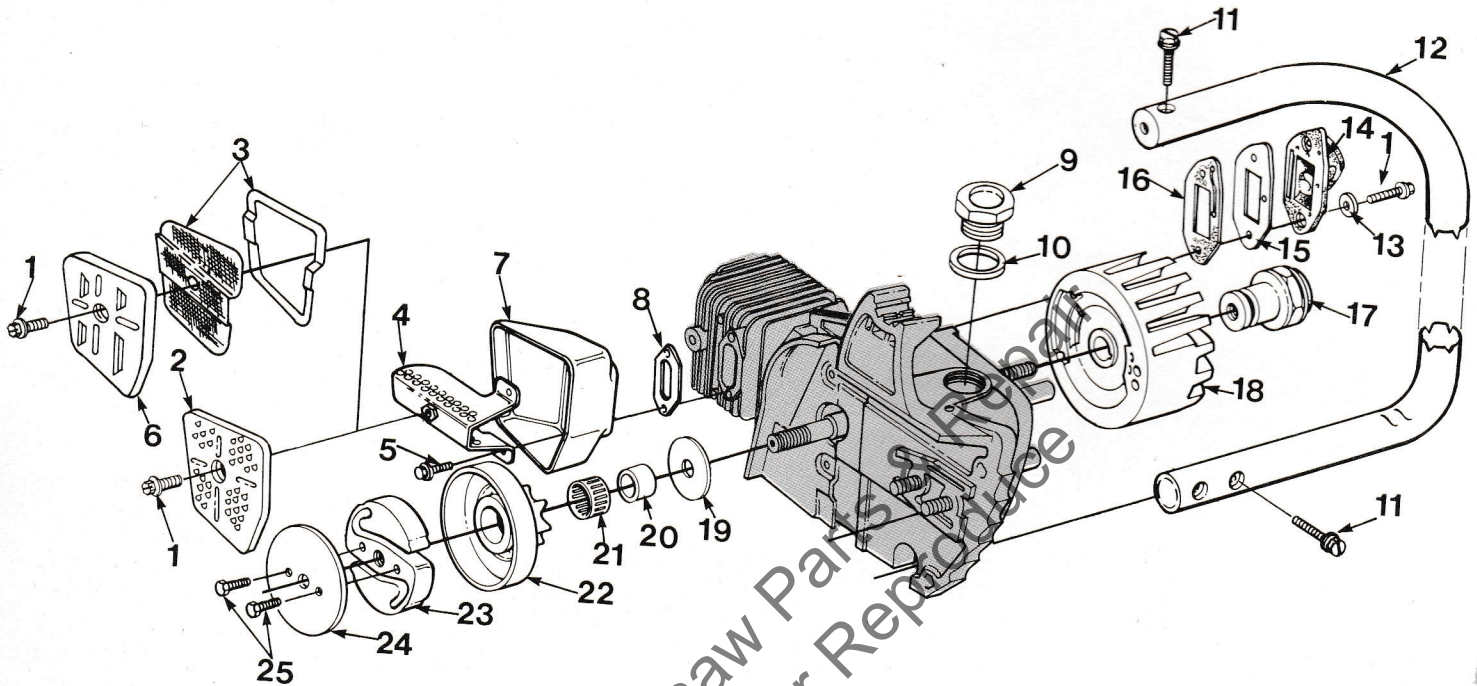
Homelite Division of Textron Inc.



# 150 SERIES FIGURE 1

No.	Description	Part No.	Qty.
1	ENGINE- Cover	A-68644-1A	1
	Includes:		
2	TRIGGER- Throttle	A-93044	1
3	PIN- Trigger	68548	1
4	SPRING- Trigger latch	68626	1
5	PIN- Grooved	68641	1
6	LINKAGE- Throttle	68550	1
7	BUTTON- Stop switch	68580	1
8	SPRING- Stop switch	68581	1
9	LINK- Grounding switch	68576	1
10	RIVET	85061	1
11	CONTACT- Grounding switch	68577	1
12	CLAMP- High tension lead	68639	1
13	TUBING- Rubber (fuel) 8"	94772-32	1
14	CARBURETOR- Walbro-HDC-54	A-69957-B	1
15	DETENT- Carburetor	A-70332	1
16	SPACER- Carburetor	68537	1
17	CAP- Fuel filler	A-69500-A	1
	Includes:		
18	FILTER- Fuel cap	69454	1
19	VALVE- Check	69451	1
20	GASKET- Fuel filler cap	69501	1
21	CHAIN- Bead	69502	1
22	RETAINER	69503	1
23	SCREW- Pan hd., #6 x 1/4	82256	1
24	FILTER- Fuel	A-69923	1
25	ELEMENT- Felt filter	64083	1
26	DEFLECTOR- Air	68534	1
27	BUSHING- Flanged	68560	1
28	SCREW- Hex washer hd., 8-32 x 2	82224	2
29	BUTTON- Choke	68551	1
30	SCREW- Sems, hex hd., 10-24 x 5/8	69335-A	4
31	FILTER- Element air	68532	1
32	COVER- Air filter	68531-A	1
33	SCREW- Cover retaining	68535	1
34	SCREW- Hex washer hd., 8-32 x 1/2	80983	2
	STARTER COMPLETE	A-68611-A	1
	Includes:		
35	HOUSING- Starter	A-68523-A	1
36	SPRING- Rewind	65107	1
37	RETAINER- Rewind spring	68612	1
38	ROPE- Starter #4 (42" long)	A-93876	1
39	GRIP- Starter rope	64155-B	1
40	INSERT- Rope retaining	68837-A	1
41	PULLEY- Starter	A-68645-A	1
	Includes:		
42	WASHER- Nylon	93862	1
43	PLATE- Guide bar (inner)	67300-B	1
44	PLATE- Guide bar (outer)	67299-B	1
45	COVER- Drivecase	A-68614-1A	1
	Includes:		
46	PIN- Guide bar adjusting	65112-1	1
47	SCREW- Guide bar adjusting	65175-A	1
48	NUT- Hex centerlock, 10-32	81206	1
49	NUT- Hex, 5/16-18	81196	2
50	SCREW- Pan hd., 8-32 x 3/8	80939	2
51	SHIELD MUFFLER- (150 AOW) Included in A-94068	94071-1	1
52	ROD- Choke	68552	1
53	SPRING- Choke	68584-A	1

# 150 SERIES FIGURE 2

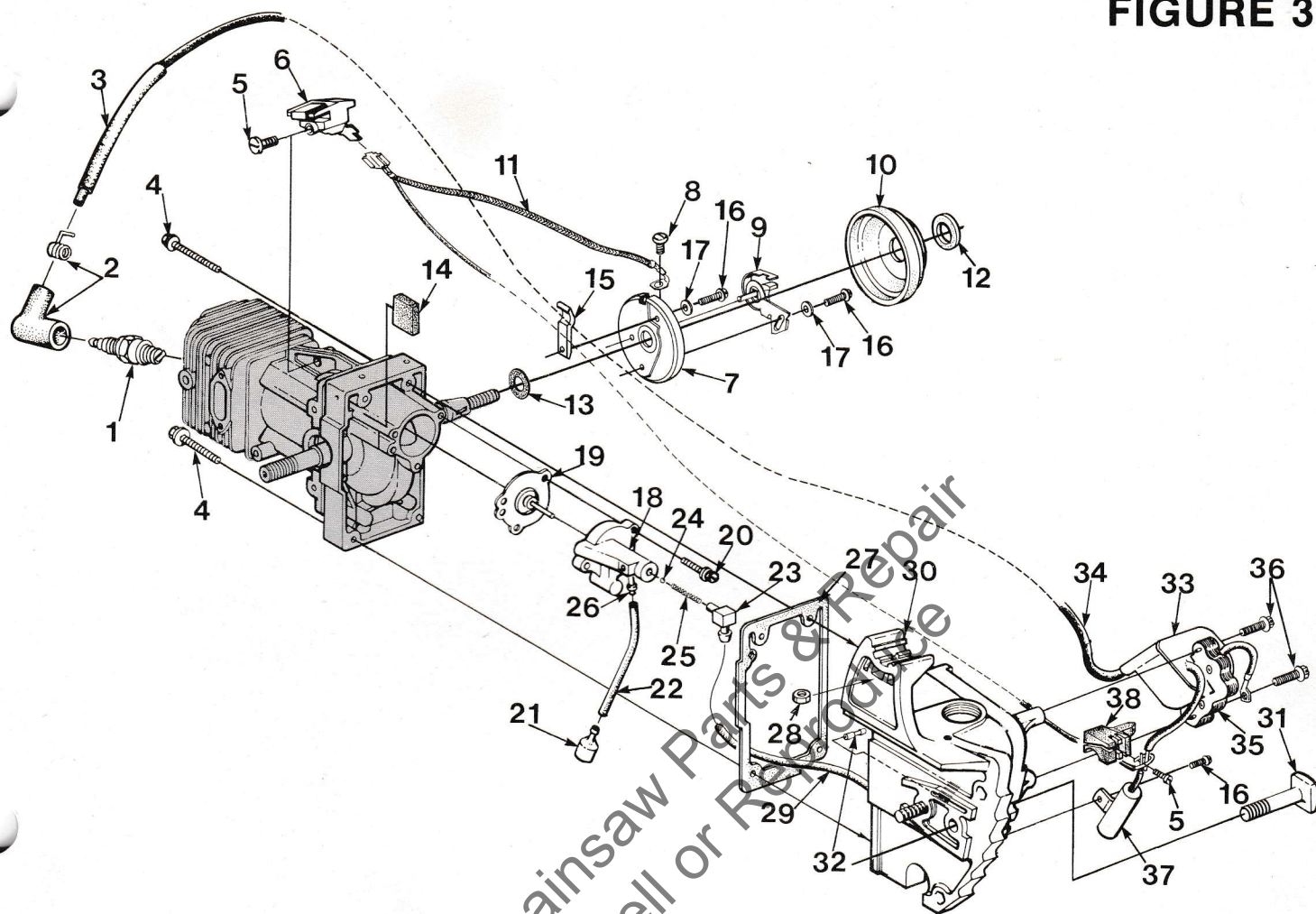


**NOTE:** Rotor nut A68610 has left hand threads. Turn nut to the right to remove.

No.	Description	Part No.	Qty.
1	SCREW- Hex washer hd., 8-32 x 1/2	80983	4
2	CAP- Muffler (150 AO)	68956-1	1
3	ARRESTOR- Spark (150 AOW)	A-68666-1B	1
4	BAFFLE- Muffler	A-68564	1
	KIT- Muffler temp. (150 AOW)	A-94068	1
	Includes:		
	#3 Arrestor	A-68666-1B	1
5	SCREW- Hex washer hd., 8-32 x 1/2	80983	2
	#51 SHIELD- Muffler (150 AOW)	94071-1	1
	(FIG. 4)		
6	CAP- Muffler (150 AOW)	94070	1
7	BODY- Muffler	68545-1	1
8	GASKET- Muffler	68542	1
9	CAP- Oil filler	A-68557	1
	Includes:		
10	GASKET- Oil filler cap	68533	1

No.	Description	Part No.	Qty.
11	SCREW- Oval hd., 10-24 x 1-1/8	82218	3
12	HANDLE BAR	A-70904-1	1
13	WASHER- Flat, 7/16 x 3/16 x 1/16	84103	2
14	MANIFOLD- Intake	A-68520-2	1
15	COVER- Pulse	68671	1
16	GASKET- Intake manifold	68464	1
17	NUT- Rotor (See NOTE)	A-68610	1
18	ROTOR	68530	1
19	WASHER- Thrust	65064	1
20	RACE- Inner	65746-B	1
21	BEARING- Needle	64124	1
22	SPROCKET & DRUM- 7 tooth, 3/8" pitch	A-12294	1
	CLUTCH & PLATE	A-69953	1
	Includes:		
23	CLUTCH "S"	68362-1A	1
24	PLATE- Clutch	69915	1
25	SCREW- Hex hd., 10-32 x 1/2	80361-2	1

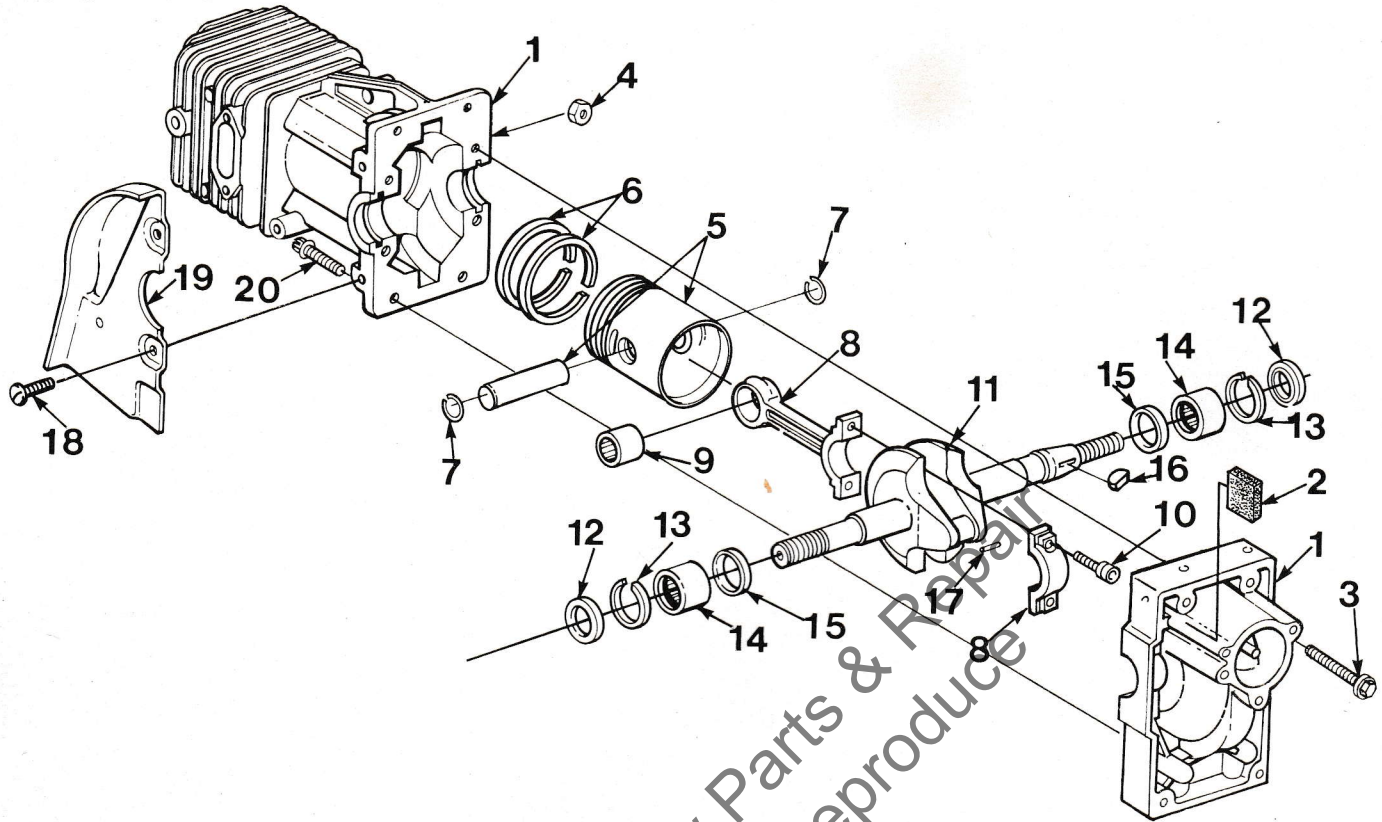
# 150 SERIES FIGURE 3



No.	Description	Part No.	Qty.
1	SPARK PLUG	68616-S	1
2	TERMINAL- Spark plug	A-55373-A	1
3	SLEEVE- Wire (fiberglass)	68625	1
4	SCREW- Hex washer hd., 8-32 x 1 1/4	82194	4
5	SCREW- Pan hd., plastite, 6 x 1/4	82256	2
6	BUSHING & TERMINAL	A-69341	1
7	BOX- Breaker	A-69533-A	1
	Includes:		
8	SCREW- Plastite #6 x 1/4	82256	1
9	POINTS- Breaker	A-94631	1
10	COVER- Breaker box	A-94231	1
	Includes:		
11	LEAD- Stop switch	A-93626	1
12	SEAL- Breaker box cover	68618-A	1
13	SEAL	93849	1
14	COVER- Vent	68990-A	1
15	CLAMP- High tension lead	68623	1
16	SCREW- Pan washer hd., 6-32 x 3/8	80571	2
17	WASHER- Flat #8	84025	2
18	PUMP- Automatic oil	A-70974-A	1
	Includes:		
19	PLUNGER- Oil pump	A-68583-B	1

No.	Description	Part No.	Qty.
20	SCREW- 8-32 x .625	82291	2
21	FILTER- Oil	A-68593	1
22	LINE- Oil pick-up 2 1/4"	70309-09	1
23	FITTING- Tube	94619	1
24	BALL- Check friction	60051	1
25	SPRING- Choke valve	68570	1
26	FITTING- Tube	70204	1
27	GASKET- Oil tank	68589-C	1
28	NUT- Hex centerlock, 10-24	81208	1
29	RUBBER- Tubing 4 3/4	93112-19	1
30	TANK- Oil	A-93743-1	1
	Includes:		
31	BOLT- Guide bar	58753	2
32	FITTING- Tube	70972	1
33	COIL- Ignition	A-68649-A	1
	Includes:		
34	LEAD- Hi-tension	68629	1
35	CORE and Coil	A-68648	1
	Includes:		
	RETAINER- Coil (Not shown)	68257	1
36	SCREW- Hex hd., 8-32 x 3/4	82248	4
37	CONDENSER	68543	1
38	BLOCK- Terminal	68613	1

# 150 SERIES FIGURE 4



No.	Description	Part No.	Qty.	No.	Description	Part No.	Qty.
1	CRANKCASE & CYLINDER Includes:	A-68643-D	1	8	ROD- Connecting Includes:	A-68518	1
2	COVER- Vent	68990-A	1	9	BEARING- Needle	68512	1
3	SCREW- Hex washer hd. 8-32 x 1	88044	4	10	SCREW- Soc. hd., 8-32 x 1/2	69919	2
4	NUT- Hex centerlock, 8-32	81223	4	11	CRANKSHAFT	68507-1	1
	CLAMP (Not shown)	68623	1	12	SEAL	94638	2
	PIN- Dowel (Not shown)	64309-1	1	13	RING- Retaining	68514	2
	SCREW- Pan washer hd. 6-32 x 3/8- Not shown)	80571	2	14	BEARING- Roller	12530	2
5	PISTON & PIN Includes:	A-68642	1	15	BEARING- Thrust	68509-A	2
6	PISTON- Ring	68508	2	16	KEY- Woodruff	65126	1
7	RING- Piston retaining	64813	2	17	ROLLER- Needle (set of 18)	69919	2
				18	SCREW- Pan hd. taptite, 8-32 x 5/16	82195	3
				19	SHIELD- Sawdust	68596	1
				20	SCREW- Hex hd., 8-32 x 3/4	82248	2

## ACCESSORIES

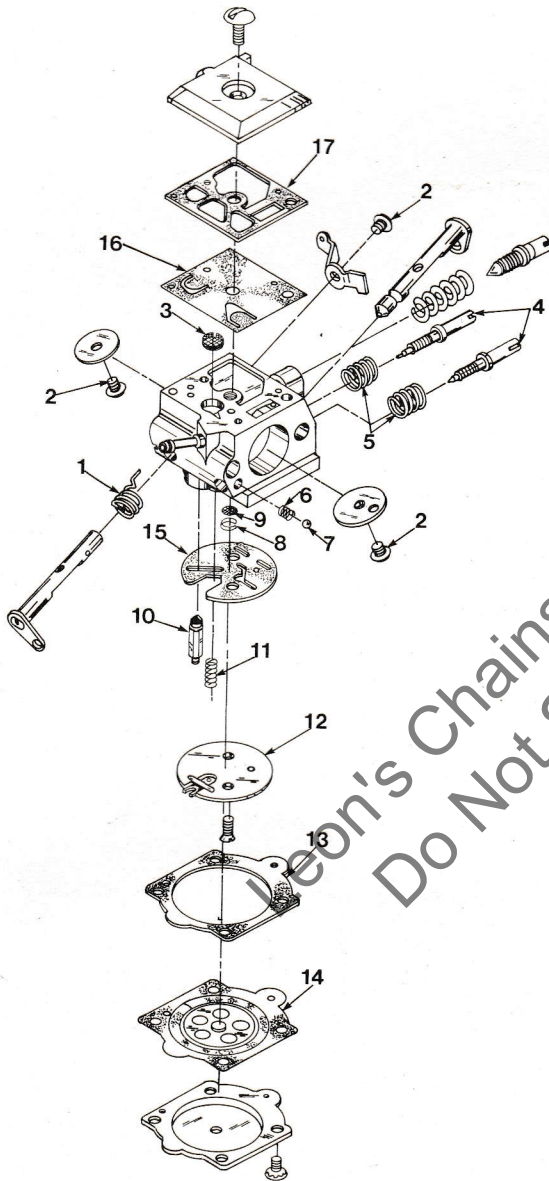
<b>KIT- Spiked bumper</b>	<b>A-68655</b>
Includes:	
2 Screws	80648
2 Nuts	81206
REEL- 250 ft. starter rope #4	68848
TUBING- Rubber 10 ft.	94772-99
PAINT- Red-12 oz.	23475
CASE- Carrying	94216
DECALS- Set of four	A-69048-A

## TOOLS

TOOL- Check valve	24972
GAGE- (.015 pink plastic feeler)	22486
LOCTITE	23488-B
PLUG- Needle bearing installation	23756
PULLER- Magneto rotor	A-24544
Includes:	
4 SCREWS- Hex 10-32 x 1 3/8	82162
4 WASHERS - Flat #10	84003-1
4 NUTS- Hex centerlock, 10-32	81206
SCREWDRIVER	24541
SHIM (.012 black plastic) Magneto Air Gap	24306
SPACER- Plug	24548
WRENCH- Spanner (clutch)	A-93791
Includes:	
2 PINS- Clutch spanner	23717-A

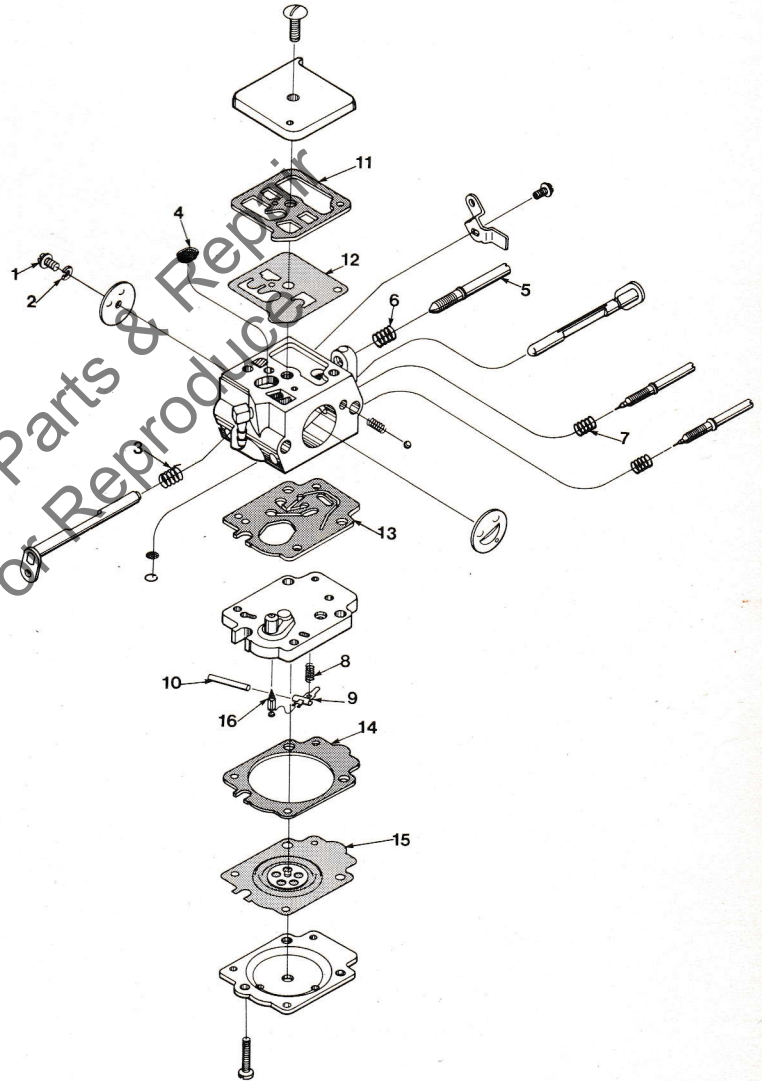
**Carburetor  
A-69957-B**

**HDC-54**



**Carburetor  
A-70155-A**

**HK-3B**



REPAIR KIT (Includes #1-17)  
GASKET- Diaphragm Kit (Includes #13-17)  
REPAIR KIT- Check valve

93200-B  
94701  
65386

REPAIR KIT (Includes #1-15)  
GASKET- Diaphragm Kit (Includes #11-15)  
NEEDLE- Inlet #16

70098  
70094  
70109

1976VY

**HOMELITE DIVISION OF TEXTRON INC.**

P.O. BOX 7047  
14401 CAROWINDS BOULEVARD  
CHARLOTTE, N.C. 28217

Leon's Chair Parts & Repair  
Do Not Sell or Reproduce

**HOMELITE** **TEXTRON**

Homelite Division of Textron Inc.