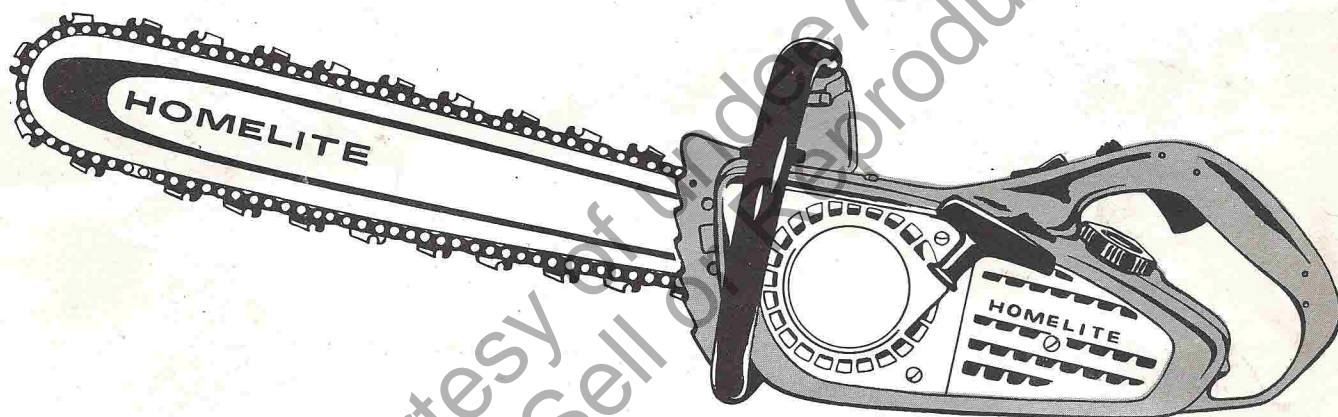


HOMELITE®



150 AUTOMATIC

CHAIN SAW

HOMELITE®

A **Textron**
DIVISION

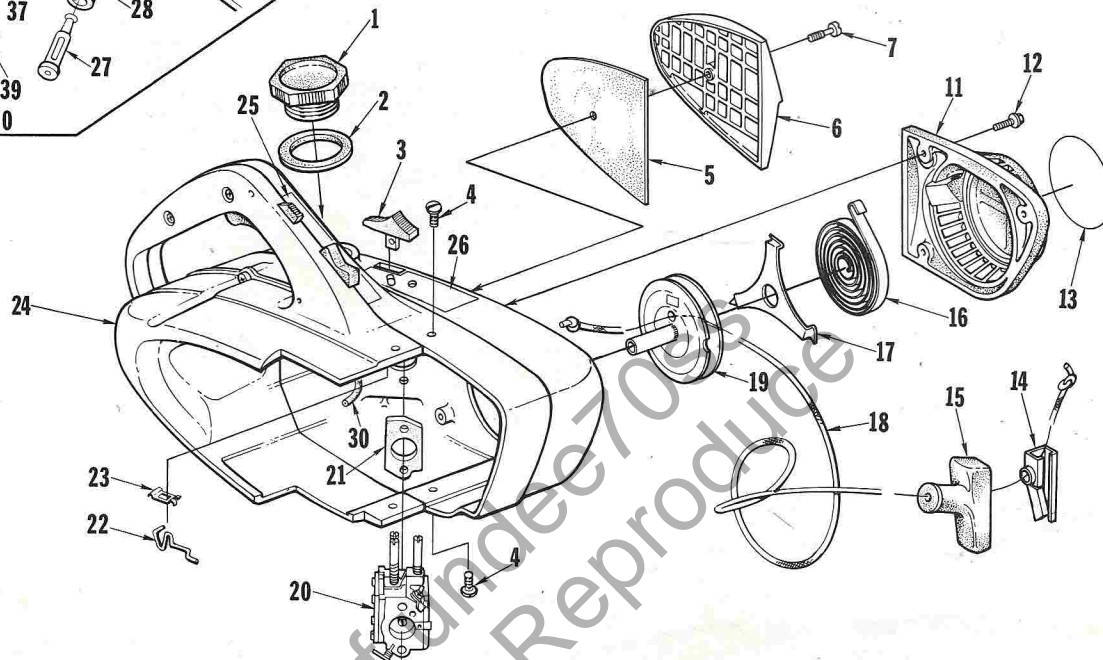
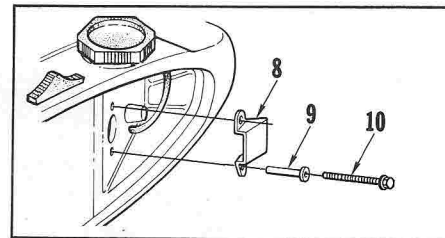
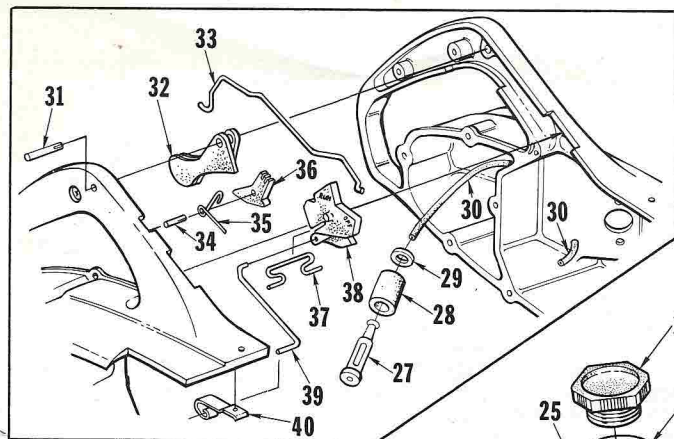
PORT CHESTER, N.Y. U.S.A.

PRINTED IN U.S.A.

PRICE .35

PART NO. 24535

150 AUTOMATIC



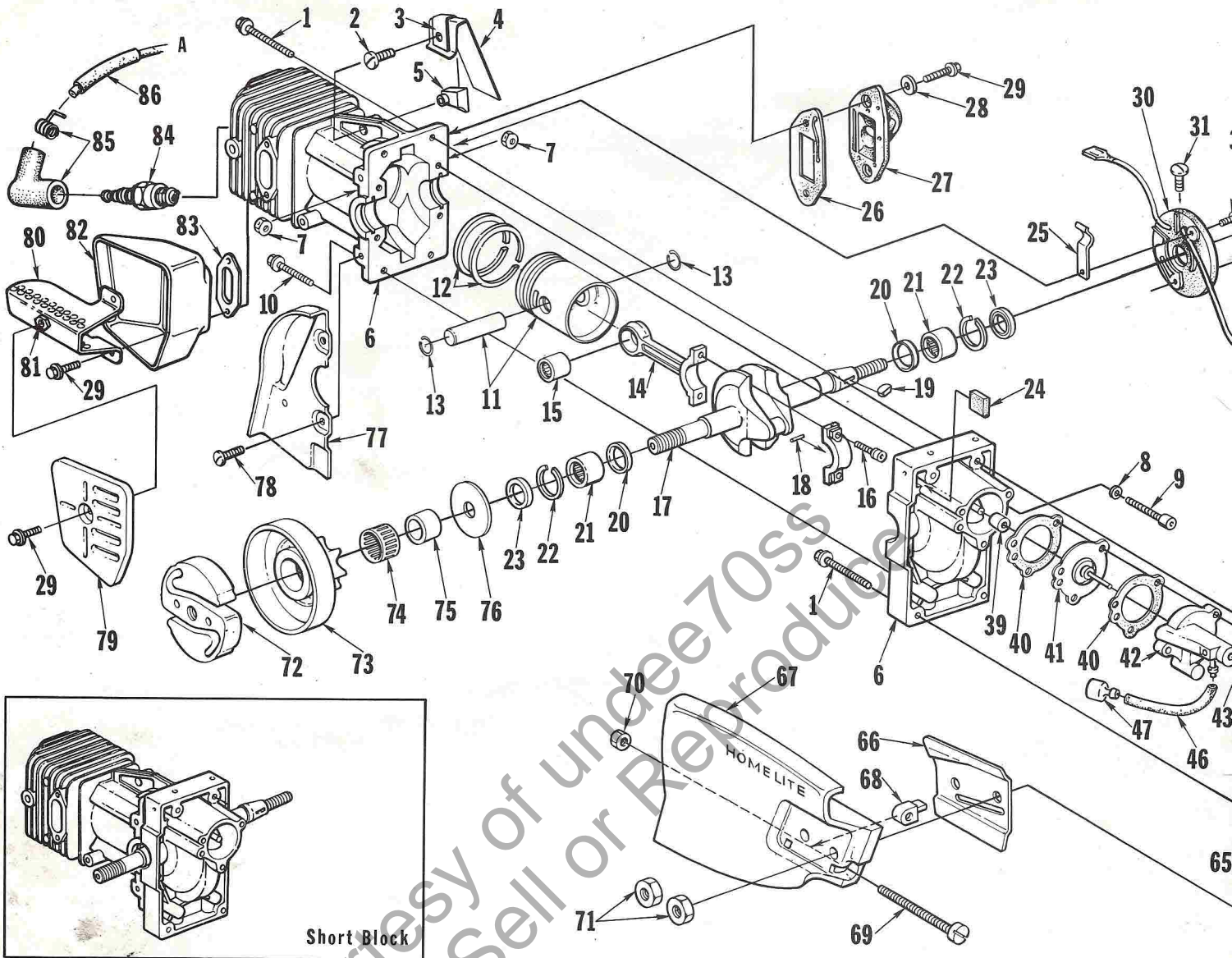
ENGINE COVER

No.	Description	Part No.	Qty.	No.	Description	Part No.	Qty.
1	CAP-fuel filler Includes: VALVE-check (not shown)	A-65283-A	1	*21	SPACER-carburetor	68537	1
2	GASKET-fuel filler cap	58957	1	*22	ROD-choke	68552	1
* 3	BUTTON-choke	68551	1	*23	SPRING-choke	68584	1
* 4	SCREW-pan hd., 10-24 x 1/2	82216	4	*24	ENGINE COVER	A-68644	1
* 5	ELEMENT-air filter	68532	1		Includes:		
* 6	COVER-air filter	68531	1	*25	DECAL-"on-off"	68652	1
* 7	SCREW-cover retaining	68535	1	*26	DECAL-starting instructions	68654	1
* 8	DEFLECTOR-air	68534	1	*27	PICK-UP-fuel	A-63920	1
* 9	BUSHING-flanged	68560	2	28	Includes: FILTER-felt	64083-1	1
*10	SCREW-hex washer hd., 8-32 x 1-3/4	82217	2	29	WASHER	64182	1
*11	HOUSING-starter	A-68523	1	*30	LINE-fuel pick-up	68562	1
12	SCREW-hex washer hd., 8-32 x 1/2	80983	3	*31	PIN-trigger	68548	1
*13	DECAL-150 Auto	68621	1	*32	TRIGGER-throttle	68549	1
14	INSERT-rope retaining	68837	1	*33	LINKAGE-throttle	68550	1
15	GRIP-starter rope	64155-A	1	*34	PIN-grooved	68641	1
16	SPRING-rewind	65107	1	*35	SPRING-trigger latch	68626	1
*17	RETAINER-rewind spring	68612	1	*36	LATCH-trigger	68635	1
*18	ROPE-starter, #4 (48" in length)	68528	1	*37	SPRING-stop switch	68581	1
*19	PULLEY-starter	A-68645	1	*38	BUTTON-stop switch	68580	1
*20	CARBURETOR-Walbro HDC - 3	A-68536	1	*39	LINK-grounding switch	68576	1
				*40	CONTACT-grounding switch	68577	1

* Denotes new parts

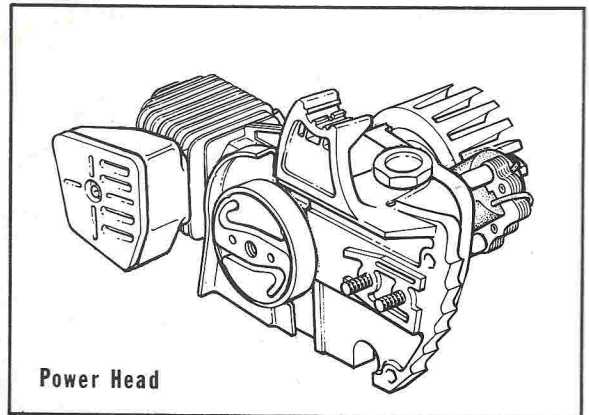
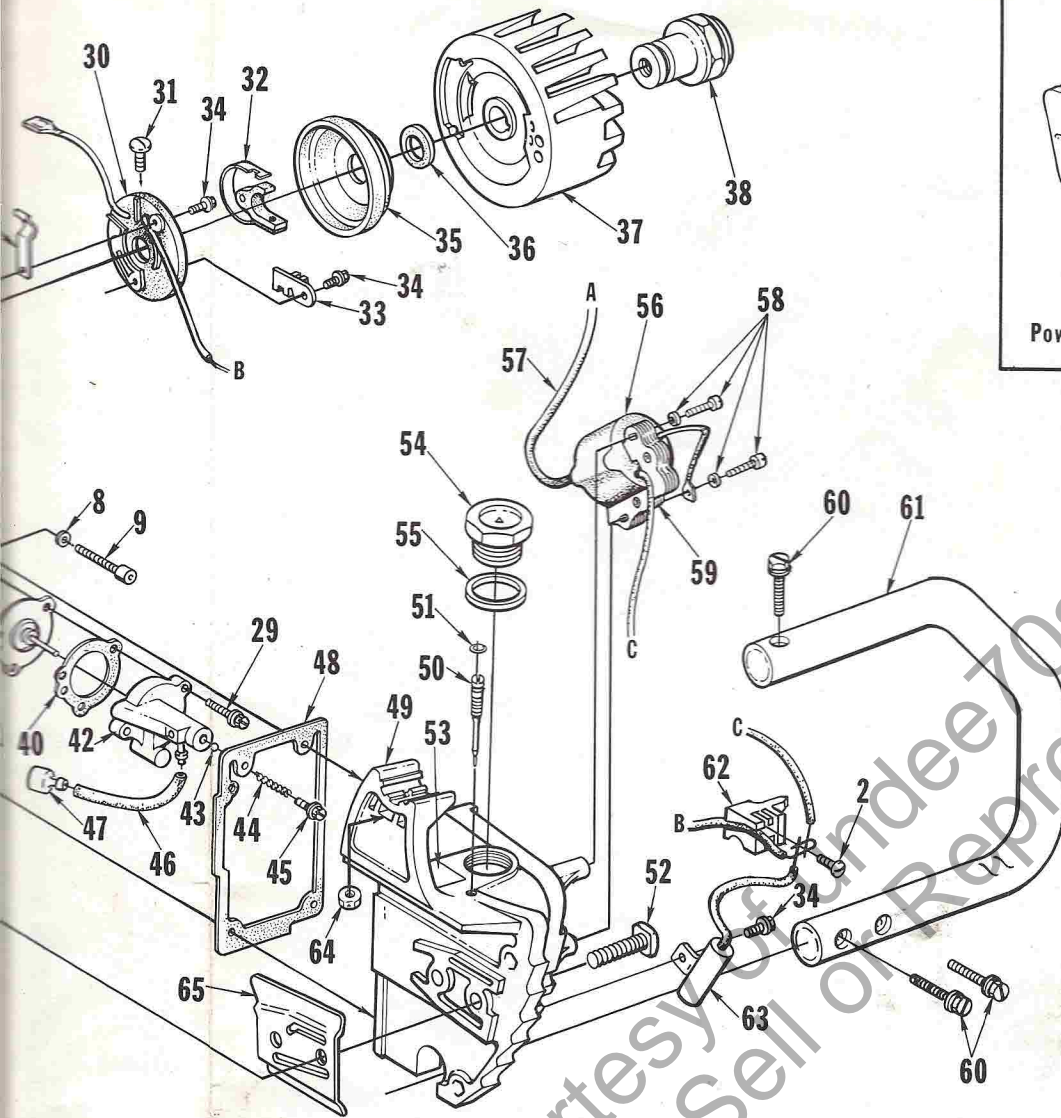
ALWAYS FURNISH MODEL AND SERIAL NUMBER WHEN ORDERING PARTS.

150 AUTOMATIC



No.	Description	Part No.	Qty.	No.	Description	Part No.	Qty.	No.
* 1	SCREW-hex washer hd., 8-32 x 1 1/4	82194	4	*24	PACKING-felt	68640	1	*48
* 2	SCREW-pan hd. Plastite, #6 x 3/8	82215	2	*25	CLAMP-hi-tension lead	68623	1	*49
* 3	TERMINAL-aluminum	68595	1	*26	GASKET-intake manifold	68464	1	*50
* 4	INSULATOR	68605	1	*27	MANIFOLD-intake	A-68520	1	51
* 5	BUSHING-insulator	68604	1	*28	WASHER-flat, 7/16 x 3/16 x 1/16	84103	2	52
*	SHORT BLOCK	A-68624	1	29	SCREW-hex washer hd., 8-32 x 1/2	80983	7	*53
	Includes:			*30	BOX-breaker	A-68647	1	*54
* 6	CYLINDER & CRANKCASE	A-68643	1		Includes:			*55
* 7	Includes: NUT-hex centerlock, #8-32	81223	4	*31	SCREW-pan hd. Plastite, #6 x 3/8	82215	1	*56
* 8	WASHER-flat #8	84101	4	*32	POINTS-breaker	A-68646	1	*57
* 9	SCREW-soc. hd., 8-32 x 1	82192	4	*33	TERMINAL-ground	68591	1	
*10	SCREW-hex washer hd., 8-32 x 1/2	80983	2	34	SCREW-pan washer hd., 6-32 x 3/8	80571	3	58
*11	PISTON & PIN	A-68642	1	*35	COVER-breaker box	A-68592	1	*59
12	Includes: PISTON RING	68508	2	*36	Includes: SEAL-breaker box cover	68618	1	
13	RING-piston pin retaining	64813	2	*37	ROTOR	68530	1	*60
*14	ROD-connecting	A-68518	1	*38	NUT-rotor	A-68610	1	*61
15	Includes: BEARING-needle	68512	1	*39	SLEEVE-bumper	68617	1	*62
16	SCREW-soc. hd., 8-32 x 1/2	80541	2	*40	GASKET-oil pump	68650	2	*63
*17	CRANKSHAFT	68507-1	1	*41	PLUNGER-oil pump	A-68583	1	*64
*18	ROLLER-needle (set of 18)	A-68511	1	*42	PUMP-automatic oil	A-68585	1	65
19	KEY-woodruff	65126	1	43	Includes: BALL	60051	2	66
*20	BEARING-thrust	68509	2	*44	SPRING-check valve	68570	1	*67
*21	BEARING-roller	68513	2	*45	SCREW-oiler spring	68619	1	68
*22	RING-retaining	68514	2	*46	LINE-oil pick-up	68561	1	69
*23	SEAL	68519	2	*47	FILTER-oil	A-68593	1	70

ALWAYS FURNISH MODEL AND SERIAL NUMBER WHEN ORDERING PARTS.



Tools

- 22486 GAGE-feeler (.015 yellow plastic)
- 23488-B LOCTITE
- 23756 PLUG
- *A-24544 PULLER-rotor
- *24541 SCREWDRIVER
- 24306 SHIM (.0125 black plastic)
- *24548 SPACER-plug
- *68651 WRENCH-socket
- A-23696-A WRENCH-spanner (clutch)

Accessories

- *A-68666-1 ARRESTOR-spark
- *24551 GREASE-All Temp Multi-Purpose (8oz. can)
- *A-24532 KIT-filter
- A-24450 KIT-guide bar plate
- *A-24531 KIT-ignition
- *A-24530 KIT-starter rope
- *A-68655 KIT-spiked bumper
- 80648 Includes: SCREW - 2
- 81206 NUT - 2
- 68848 REEL-250 ft. starter rope
- 24453 SPRAY CAN-dark blue

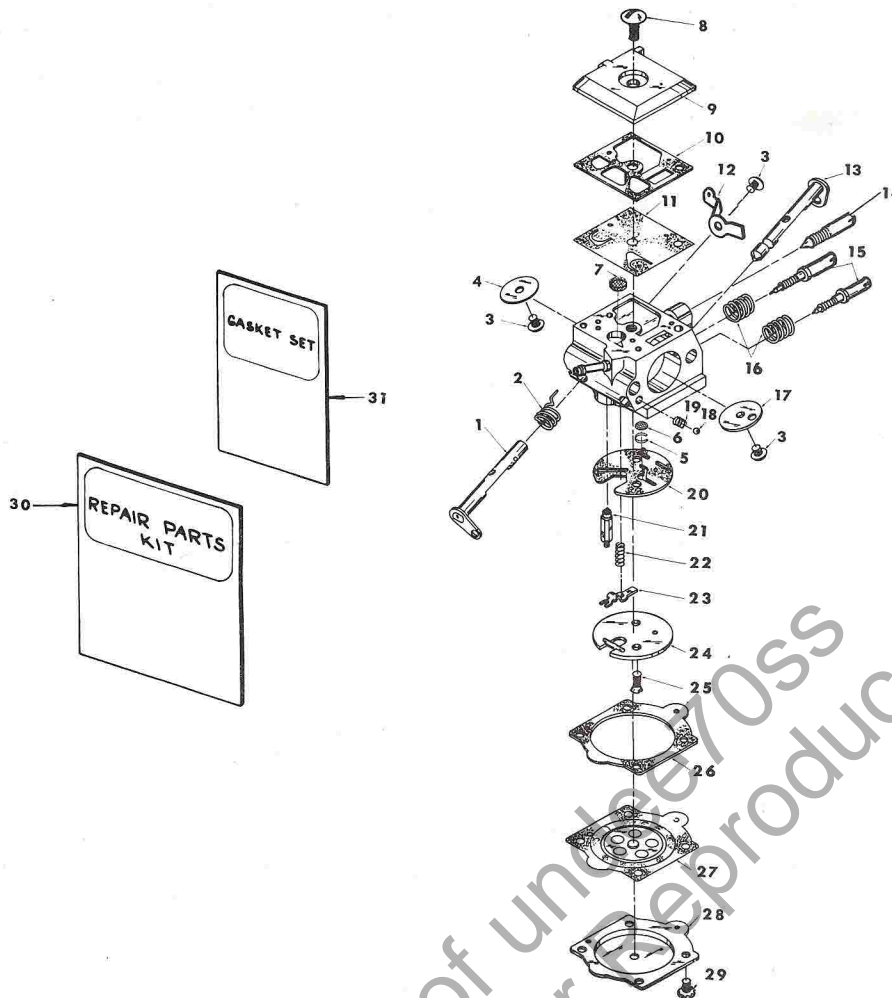
No.	Qty.	No.	Description	Part No.	Qty.	No.	Description	Part No.	Qty.
1		*48	GASKET-oil tank	68589	1	71	NUT-hex, 5/16-18	81196	2
1		*49	TANK-oil	A-68609	1	*72	CLUTCH-"S"	68362-1	1
1		*50	Includes: VALVE-oil adjustment	68565	1	73	SPROCKET & DRUM	A-65033	1
1		51	"O" RING	59074	1	74	BEARING-needle	64124	1
2		52	BOLT-guide bar	58753	2	75	RACE-inner	65746	1
7		*53	DECAL-chain oil	68653	1	76	WASHER-thrust	65064	1
1		*54	CAP-oil filler	A-68557	1	*77	SHIELD-sawdust	68596	1
1		*55	Includes: GASKET-oil filler cap	68533	1	*78	SCREW-pan hd. Taptite, 8-32 x 5/16	82195	3
1		*56	COIL-ignition	A-68649	1	*79	CAP-muffler See Note	68547-1	1
1		*57	Includes: LEAD-hi-tension	68629	1	*	ARRESTOR-spark, See Note	†A-68666-1	1
1			RETAINER-coil (not shown)	68257	1	*80	BAFFLE-muffler	A-68564	1
3		58	SCREW-coil & core	64021	2	81	Includes: NUT-clinch, #8-32	81224	1
1		*59	CORE-coil	A-68648	1	*82	BODY-muffler	68545-1	1
1			Includes: RETAINER-coil (not shown)	68257	1	*83	GASKET-muffler	68542	1
1		*60	SCREW-hex washer hd., 10-24 x 1 1/8	82218	3	*84	SPARK PLUG-Champion DJ-7J	68616-S	1
1		*61	HANDLE BAR	A-68599-1	1	85	TERMINAL-spark plug	A-55373-A	1
1		*62	BLOCK-junction	68613	1	*86	SLEEVE-wire (fibreglas)	68625	1
2		*63	CONDENSER	68543	1				
1		*64	NUT-hex centerlock, #10-24	81208	1				
1		65	PLATE-guide bar (inner)	67300	1				
2		66	PLATE-guide bar (outer)	67299	1				
1		*67	COVER-drivecase	A-68614	1				
1		68	Includes: PIN-guide bar adjusting	65112-1	1				
1		69	SCREW-guide bar adjusting	65175-A	1				
1		70	NUT-hex centerlock, #10-32	81206	1				

Note: When Spark Arrestor is used, remove Muffler Cap #79

† Accessory

* Denotes new parts

150 AUTOMATIC



*A-68536

HDC-3

No.	Description	Part No.	Qty.	No.	Description	Part No.	Qty.
* 1	SHAFT-throttle	68636	1	17	VALVE-choke	67365	1
2	SPRING-throttle return	†67376	1	18	BALL-choke friction	†60051	1
3	SCREW-valve	†67372	3	19	SPRING-choke friction	†64238	1
4	VALVE-throttle	67363	1	20	GASKET-circuit	‡67367	1
5	RING-screen retaining	†67360	1	21	VALVE-inlet needle	†64229	1
6	SCREEN-check valve	†67381	1	22	SPRING-metering lever	†67378	1
7	SCREEN-fuel inlet	64243	1	23	LEVER-metering	†67383	1
8	SCREW-fuel pump cover	67374	1	24	PLATE-circuit	67382	1
* 9	COVER-fuel pump	68638	1	25	SCREW-circuit plate	67375	2
10	GASKET-fuel pump	‡67368	1	26	GASKET-metering diaphragm	‡64231	1
11	DIAPHRAGM-fuel pump	†67370	1	27	DIAPHRAGM-metering	†67371	1
*12	STOP-throttle	68633	1	28	COVER-metering diaphragm	64224	1
*13	SHAFT-choke	68632	1	29	SCREW-metering cover	64689	4
*14	NEEDLE-idle adjustment	68631	1	*30	REPAIR KIT	68634	1
*15	NEEDLE-mixture adjustment	†68637	2	31	GASKET SET	†67369	1
16	SPRING-needle adjusting	†67377	2		REPAIR KIT-check valve	65386	1

* Denotes new parts † Indicates contents of Repair Kit #68634 ‡ Indicates contents of Gasket Set

ALWAYS FURNISH MODEL AND SERIAL NUMBER WHEN ORDERING PARTS.

38-59 Chain
HOMELITE

NUMERICAL PARTS LIST

BAR
051 HOMELITE
GW 14502
OREGON-GUIDES-72
TEETH-25

Part No.	Description	Qty.	Part No.	Description	Qty.	Part No.	Description	Qty.
22486	Gage-feeler	1	67382	Plate-circuit	1	*68613	Block-junction	1
23488-B	Loctite	1	67383	Lever-metering	1	*A-68614	Cover-drivecase	1
A-23696-A	Wrench-spanner	1	68257	Retainer-coil	1	*68616-S	Spark Plug	1
23756	Plug	1	*68362-1	Clutch-"S"	1	*68617	Sleeve-bumper	1
24306	Shim	1	*68464	Gasket-manifold	1	*68618	Seal	1
A-24450	Kit-guide bar plate	1	*68507-1	Crankshaft	1	*68619	Screw-oiler spring	1
24453	Spray Can-darkblue	1	68508	Piston Ring	2	*68621	Decal	1
*A-24530	Kit-starter rope	1	*68509	Bearing-thrust	2	*68623	Clamp	1
*A-24531	Kit-ignition	1	*A-68511	Roller-needle	1	*A-68624	Short Block	1
*A-24532	Kit-filter	1	68512	Bearing-needle	1	*68625	Sleeve-wire	1
*24541	Screwdriver	1	*68513	Bearing-roller	2	*68626	Spring-trigger latch	1
*A-24544	Puller-rotor	1	*68514	Ring-retaining	2	*68629	Lead-hi-tension	1
*24548	Spacer-plug	1	*A-68518	Rod-connecting	1	*68631	Needle-idle adj.	1
*24551	Grease	1	*68519	Seal	2	*68632	Shaft-choke	1
A-55373-A	Terminal	1	*A-68520	Manifold-intake	1	*68633	Stop-throttle	1
58753	Bolt-guide bar	2	*A-68523	Housing-starter	1	*68634	Kit-repair	1
58957	Gasket	1	*68528	Rope-starter	1	*68635	Latch-trigger	1
59074	"O" Ring	1	*68530	Rotor	1	*68636	Shaft-throttle	1
60051	Ball-choke friction	3	*68531	Cover-air filter	1	*68637	Needle-mixture adj.	2
63718	Valve-check	1	*68532	Element-air filter	1	*68638	Cover-fuel pump	1
A-63920	Pick-Up-fuel	1	*68533	Gasket	1	*68640	Packing-felt	1
64021	Screw-coil & core	2	*68534	Deflector-air	1	*68641	Pin-grooved	1
64083-1	Filter-felt	1	*68535	Screw-cover	1	*A-68642	Piston & Pin	1
64124	Bearing-needle	1	*A-68536	Carburetor	1	*A-68643	Cylinder & C/Case	1
64155-A	Grip-starter rope	1	*68537	Spacer-carb.	1	*A-68644	Engine Cover	1
64182	Washer	1	*68542	Gasket-muffler	1	*A-68645	Pulley-starter	1
64224	Cover	1	*68543	Condenser	1	*A-68646	Points-breaker	1
64229	Valve-inlet needle	1	*68545-1	Body-muffler	1	*A-68647	Box-breaker	1
64231	Gasket	1	*68547-1	Cap-muffler	1	*A-68648	Core-coil	1
64238	Spring	1	*68548	Pin-trigger	1	*A-68649	Coil-ignition	1
64243	Spring-fuel inlet	1	*68549	Trigger-throttle	1	*68650	Gasket-oil pump	2
64689	Screw	4	*68550	Linkage-throttle	1	*68651	Wrench-socket	1
64813	Ring	2	*68551	Button-choke	1	*68652	Decal-"on-off"	1
A-65033	Sprocket & Drum	1	*68552	Rod-choke	1	*68653	Decal-chain oil	1
65064	Washer-thrust	1	*A-68557	Cap-oil filler	1	*68654	Decal	1
65107	Spring-rewind	1	*68560	Bushing-flanged	2	*A-68655	Kit-spiked bumper	1
65112-1	Pin-guide bar adj.	1	*68561	Line-oil pick-up	1	*A-68666-1	Arrestor-spark	1
65126	Key-woodruff	1	*68562	Line-fuel pick-up	1	68837	Insert-rope	1
65175-A	Screw-guide bar adj.	1	*A-68564	Baffle-muffler	1	68848	Reel-250 ft.	1
A-65283-A	Cap-fuel filler	1	*68565	Valve-oil adj.	1			
65386	Repair Kit	1	*68570	Spring-check valve	1			
65746	Race-inner	1	*68576	Link-switch	1			
67299	Plate-outer	1	*68577	Contact-switch	1			
67300	Plate-inner	1	*68580	Button-stop switch	1			
67360	Ring-screen	1	*68581	Spring-stop switch	1			
67363	Valve-throttle	1	*A-68583	Plunger	1			
67365	Valve-choke	1	*68584	Spring-choke	1			
67367	Gasket-circuit	1	*A-68585	Pump-auto. oil	1			
67368	Gasket-fuel pump	1	*68589	Gasket-oil tank	1			
67369	Gasket Set	1	*68591	Terminal-ground	1			
67370	Diaphragm	1	*A-68592	Cover-breaker box	1			
67371	Diaphragm	1	*A-68593	Filter-oil	1			
67372	Screw-valve	3	*68595	Terminal-aluminum	1			
67374	Screw	1	*68596	Shield-sawdust	1			
67375	Screw	2	*A-68599-1	Handle Bar	1			
67376	Spring-throttle	1	*68604	Bushing-insulator	1			
67377	Spring	2	*68605	Insulator	1			
67378	Spring	1	A-68609	Tank-oil	1			
67381	Screen	1	*A-68610	Nut-rotor	1			
			*68612	Retainer	1			

* Denotes new parts

FASTENING PARTS

80541	8-32 x 1/2	2
80571	6-32 x 3/8	3
80648	Screw	2
80983	8-32 x 1/2	12
81196	Nut-5/16-18	2
81206	Nut-#10-32	3
*81208	Nut-#10-24	1
*81223	Nut-#8-32	4
81224	Nut-#8-32	1
*82192	8-32 x 1	4
*82194	8-32 x 1 1/4	4
*82195	8-32 x 5/16	3
*82215	#6 x 3/8	3
*82216	10-24 x 1/2	4
*82217	8-32 x 1 3/4	2
*82218	10-24 x 1 1/8	3
*84101	Washer-flat, #8	4
*84103	Washer-flat	2



A textron
DIVISION

PORT CHESTER, N.Y. U.S.A.

E1174 YX