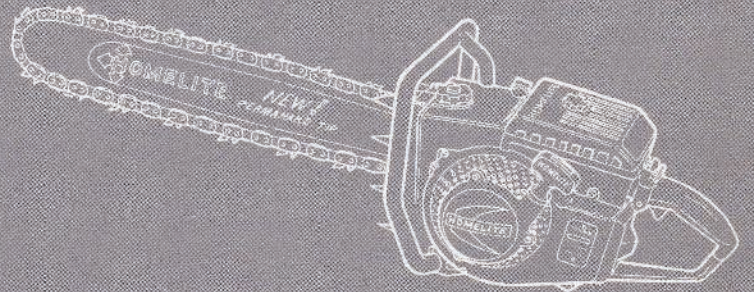


**CHAIN SAW
PARTS LIST**

**1050
Automatic**

HOMELITE®



Part No. 24418

Leon's Chainsaw Parts & Repair
Do Not Sell or Reproduce

1050 Automatic

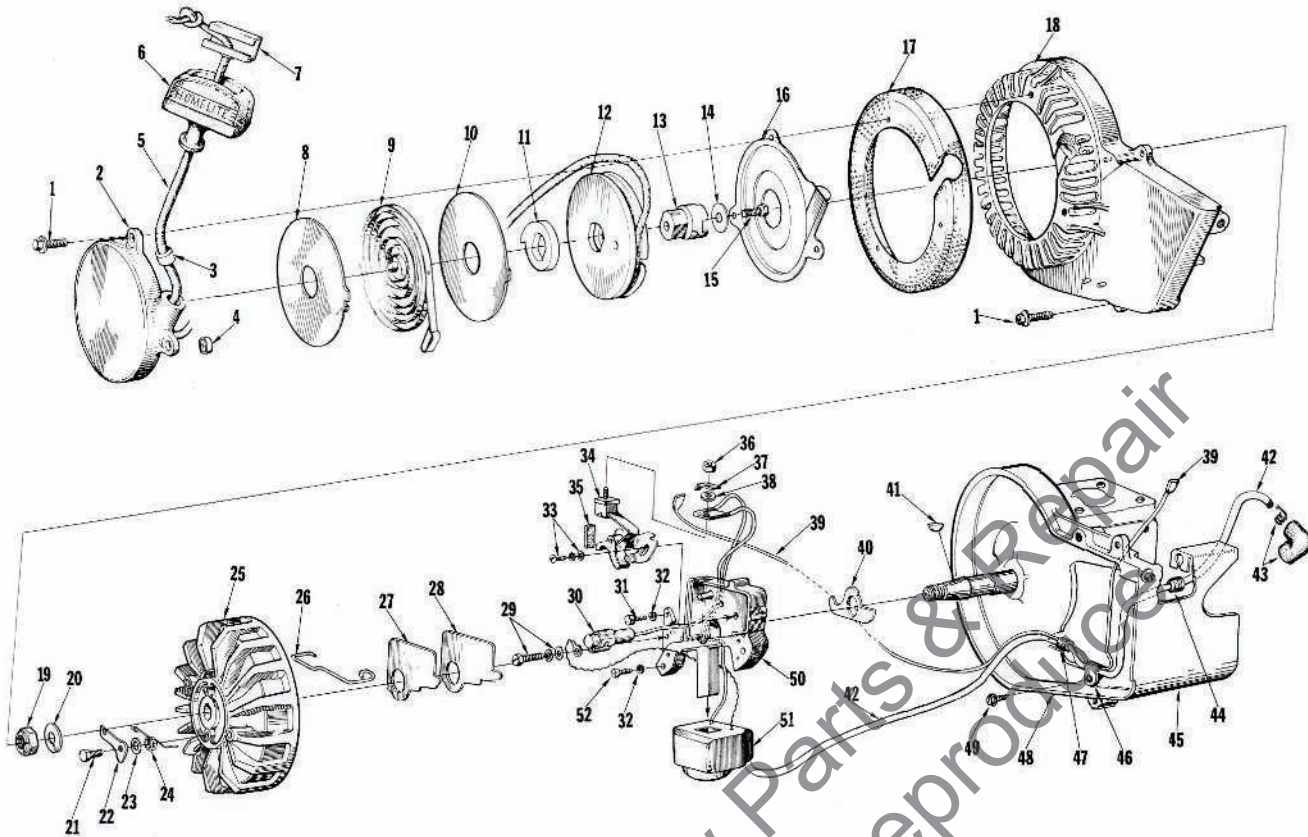


FIGURE 1

No.	Description	Part No.	Qty.	No.	Description	Part No.	Qty.
1	SCREW-hex, 12-24 x 3/4	80867	1	27	COVER-dust	55979	1
2	COVER-starter	A-64178-3	1	28	GASKET-dust cover	55978-2	1
3	Includes: BUSHING-rope	67177	1	29	SCREW GROUP-condenser	57750	1
4	BUSHING-rewind	65830	1	30	CONDENSER-w/terminal	55987	1
5	ROPE-starter	58806	1	31	SCREW-fil, 10-24 x 1/2	80595	1
6	GRIP-rope	55937	1	32	WASHER-lock, #10	83046	3
7	INSERT-rope retaining	58517	1	33	SCREW GROUP-point	57749	1
8	SHIELD-spring (inner) (optional)	65711	1	34	POINT SET	A-58165	1
9	SPRING-rewind	64180-A	1	35	Includes: WICK	55984	1
10	SHIELD-spring (outer) (optional)	65712	1	36	NUT-terminal	55982	1
11	LOCK-spring rewind	64049-A	1	37	TAB-ground	57733	1
12	PULLEY-starter	64050-1	1	38	WASHER-terminal	55983	1
13	CUP-starter	67139	1	39	LEAD-ground w/terminals	A-58321	1
14	WASHER-retaining	58763	1	40	SEAL-breaker box	56292-A	1
15	SCREW-hex, 10-32 x 1/2	80648	1	41	KEY-rotor	75078	1
16	SHIELD-sawdust	64052	1	42	LEAD-high tension	58382	1
17	SCREEN-fan housing	65390-1	1	43	TERMINAL-spark plug	A-55373-A	1
18	HOUSING-fan	59094-1	1	44	GROMMET	60929	1
19	NUT-lock, 7/16-20	81104	1	45	SHIELD-cylinder	A-63736-1	1
20	WASHER-flat	84047	1	46	CLAMP-lead	56014	1
21	STUD-shoulder	64054	2	47	SLEEVE	55290	1
22	PAWL-starter	58756	2	48	CRANKCASE-(see Fig. 2)	A-63072-A1	1
23	WASHER	58851	2	49	SCREW-hex, 10-32 x 3/8	80869-1	3
24	SPRING-starter pawl	58758-1	2	50	BOX-breaker w/core	57744	1
25	ROTOR	64053-A	1	51	COIL-w/ground terminal	55986-A	1
26	CLAMP-dust cover	55980	1	52	SCREW-fil, 10-24 x 7/8	80660	1

1050 Automatic

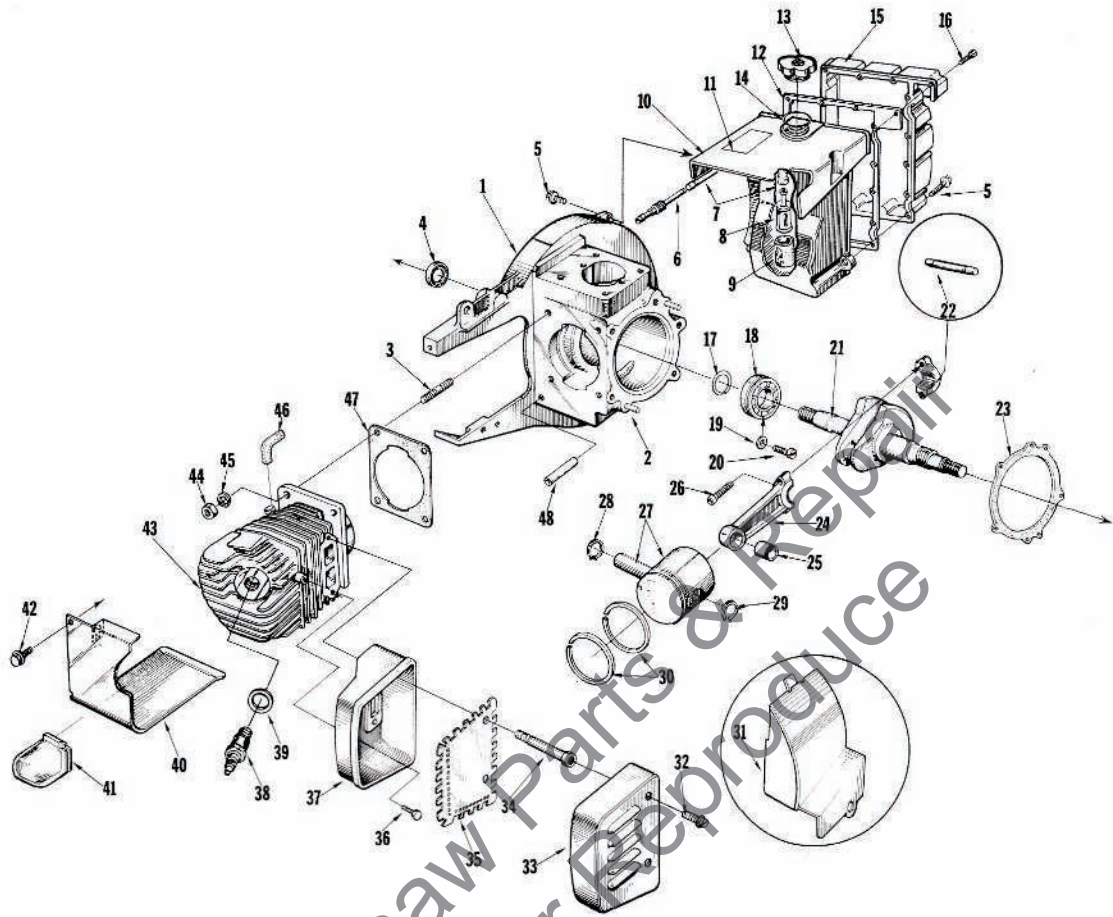


FIGURE 2

No.	Description	Part No.	Qty.	No.	Description	Part No.	Qty.
1	CRANKCASE-w/pins	A-63072-A1	1	27	PISTON & PIN	A-63071-D	1
2	Includes: PIN-dowel	74332	2	28	Includes: RING-retaining	56290	1
3	STUD	55871	4	29	RING-piston pin retaining	64743	1
4	SEAL	58308-A	1	30	PISTON RING	56291	2
5	SCREW-hex, 12-24 x 3/4	80867	4	31	EXCHANGER-heat (optional)	63103-1	1
6	FITTING-fuel outlet	58864	1	32	SCREW-hex, 12-24 x 3/8	59978-A	2
7	LINE-flexible	55905	1	33	CAP-muffler	A-59963	1
8	FILTER ASSEMBLY	A-59251	1	34	STUD-muffler	†59982-A	2
9	Includes: FILTER-felt	59253-1	1	35	BAFFLE-muffler	59978-A	1
10	TANK-fuel	58172-4	1	36	SCREW-hex, 1/4-20 x 5/8	†80402	1
11	DECAL	64144	1	37	BODY-muffler	A-59927-B	1
12	GASKET-fuel tank cover	58367	1	38	SPARK PLUG	63547-S	1
13	CAP-fuel filler	A-64140-1	1	39	Includes: GASKET	25038	1
14	Includes: GASKET	65358	1	40	SHIELD-cylinder	A-63736-1	1
15	COVER-tank	59920-2	1	41	CAP-spark plug	63735	1
16	SCREW-rd., 6 x 1/2	80513	15	42	SCREW-hex, 10-24 x 3/8	80869-1	2
17	RING-retaining	58319-A	1	43	CYLINDER-2 3/16 bore	A-63661	1
18	BEARING-ball	58190-S	1	44	NUT-hex, 1/4-28	81065-2	4
19	WASHER-lock	83061	2	45	WASHER-lock, 1/4	83009	4
20	SCREW-bearing retaining	19238-3	2	46	LINE-fuel (idle)	63656	1
21	CRANKSHAFT	A-64068	1	47	GASKET-cylinder	58292	1
22	ROLLERS-set of 31	A-64678	1	48	SLEEVE	55290	1
23	GASKET	63356	1				
24	ROD-connecting	A-59945	1				
25	Includes: BEARING-needle	59606	1				
26	SCREW	80345	2				

Accessories

- A-63518 - Spark Arrester requires #63548 Shim - one under each Muffler Stud.
- A-64411 - Muffler and Shield Assembly
 - Includes: 64408 Cap, muffler 1
 - 63855-A Screw, shoulder 3
 - 64409-2 Shield, muffler 1
 - A-64410 Body, muffler 1

†Included in A-64411 Muffler & Shield Assy.

1050 Automatic

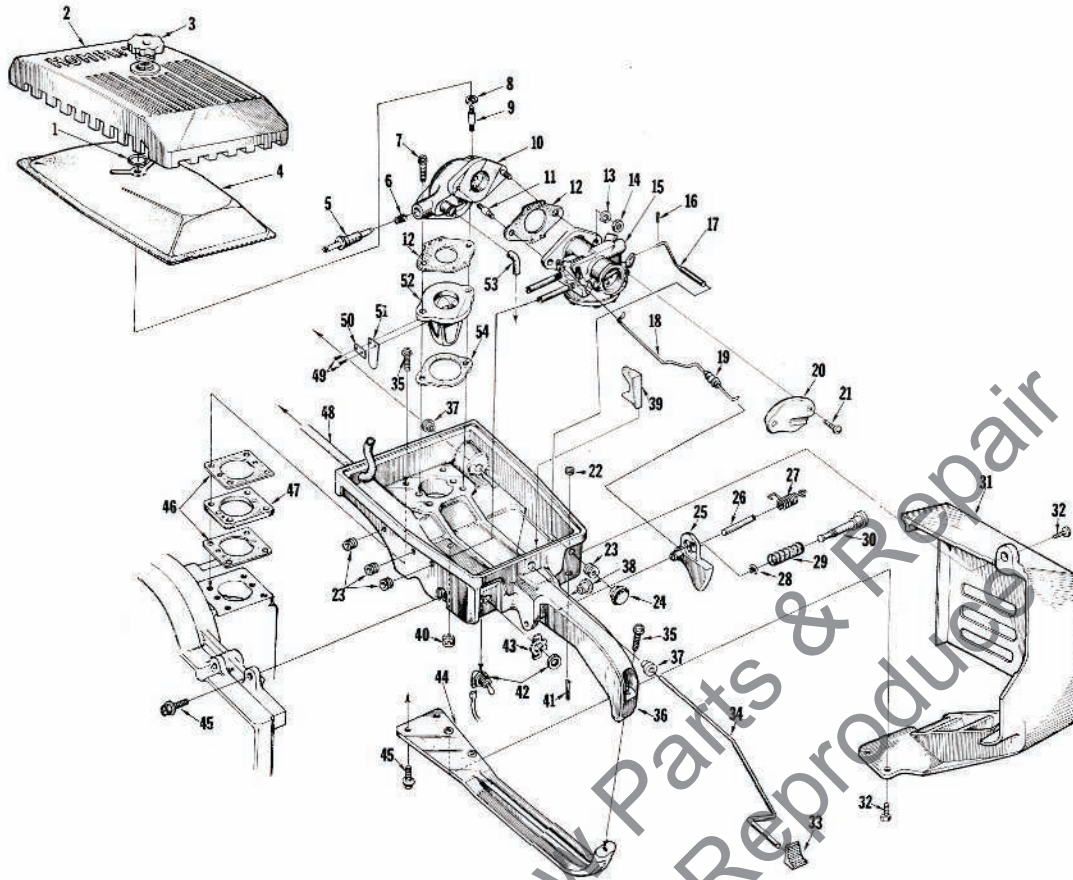


FIGURE 3

No.	Description	Part No.	Qty.	No.	Description	Part No.	Qty.
1	RING-retaining	58319-A	1	29	SPRING-lock	58405	1
2	COVER-air filter	59230-1	1	30	PIN-throttle lock	58404	1
3	NUT-cover	A-59229	1	31	SHIELD-muffler	63733-2	1
4	ELEMENT-air filter	63728	1	32	SCREW-hex, 12-24 x 5/8	80676	3
5	SCREW-idle adjusting	63657	1	33	BUTTON-oil rod	58357	1
6	SPRING-adjusting screw	63664	1	34	ROD-oil pump	58356-B	1
7	SCREW-hex, 1/4-20 x 1 1/2	80882	2	35	SCREW-hex, 12-24 x 1	80864	5
8	GASKET-stud	58392	1	36	HANDLE-throttle	A-63665	1
9	STUD-cover	58361	1	37	Includes: BUSHING-rod	58929	2
10	MANIFOLD-intake	A-63828	1	38	BUSHING-lock pin	59064	1
11	STUD-carburetor	27464	2		PLUG-button (not shown)	64607	1
12	GASKET-carburetor	63655-A	2	39	STOP-rod	58930	1
13	WASHER-lock, 1/4	83009	2	40	PLUG-button	A-64744	1
14	NUT-hex, 1/4-20	81013-1	2	41	PIN-cotter	86301	1
15	CARBURETOR	A-63585	1	42	SWITCH-toggle w/nut	A-57650-3	1
16	PIN-cotter	86324	1	43	PLATE-"On-Off"	72085-A	1
17	ROD-choke	A-58354	1	44	BRACE-throttle handle	58185-A1	1
18	ROD-throttle	59338	1	45	SCREW-hex, 12-24 x 3/4	80867	3
19	BOOT-rod	58348	1	46	GASKET-spacer	58343	2
20	DEFLECTOR-carburetor	58837-2	1	47	SPACER	58391	1
21	SCREW-pan, 10-32 x 1/2	80625	2	48	LINE-fuel	55680	1
22	FELT	63290	1	49	SCREW-pan, 4-40 x 3/16	80658	8
23	GROMMET	58362	4	50	CLAMP-reed	59629	4
24	BUTTON-rod	57289-1	1	51	REED	59628	4
25	TRIGGER-throttle	58181-A	1	52	SEAT-reed valve	59627-1	1
26	SHAFT-trigger	58353	1	53	LINE-fuel (idle)	63656	1
27	SPRING-throttle	58352-A	1	54	GASKET	55946	1
28	RING-retaining	58409	1				

1050 Automatic

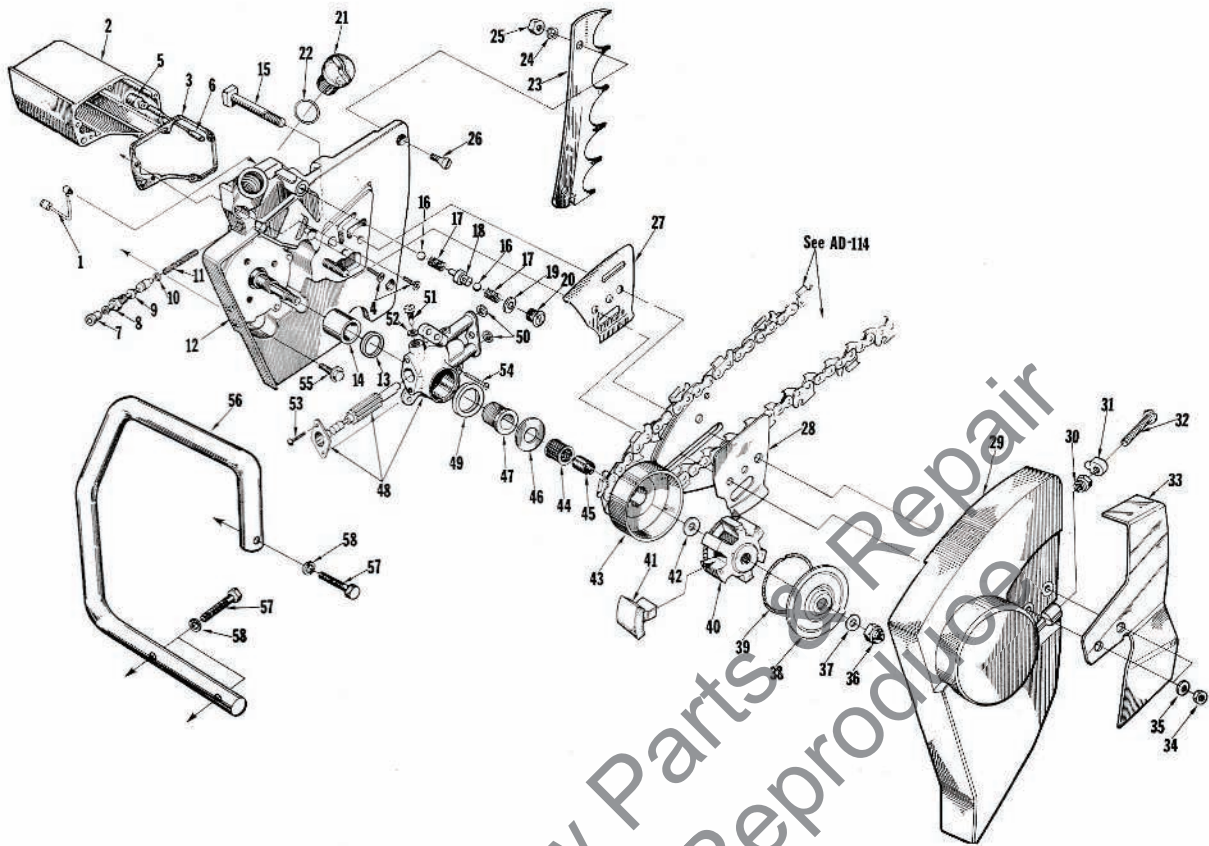


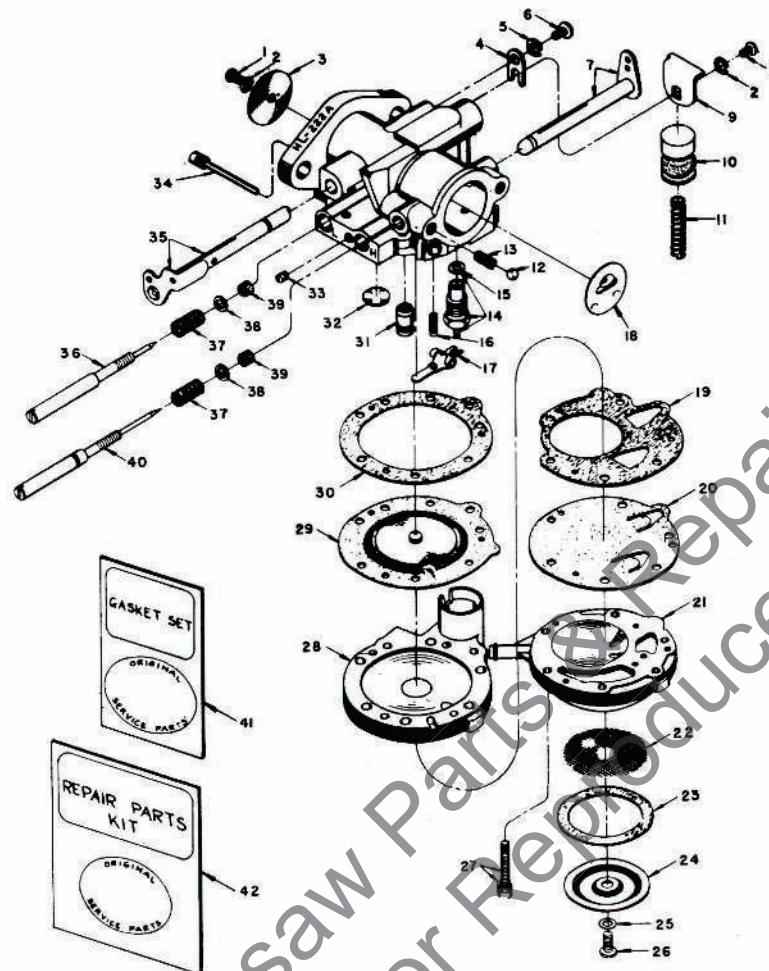
FIGURE 4

No.	Description	Part No.	Qty.	No.	Description	Part No.	Qty.
1	LINE-oil pickup	A-64010	1	38	COVER-clutch	56238-A	1
2	RESERVOIR-oil	A-58341-A	1	39	SPRING-clutch	55123-C	2
3	Includes: GASKET-reservoir	67122	1	40	SPIDER-clutch	58546-2	1
4	SCREW-fil, 8-32 x 3/4	82156	5	41	SHOE-clutch	55076-3	6
	PIN-cotter (not shown)	86301	1	42	WASHER-thrust (outer)	56132	1
5	FILTER-oil	A-64293	1	43	SPROCKET & DRUM (Open Type)		
6	LINE-oil pickup	59674	1		standard - .404 pitch, 8 tooth	A-57341	1
7	CONNECTOR-pump	58337-A	1		optional - 7/16" pitch, 7 tooth	A-56299	1
8	PLUNGER-oil pickup	A-57834-10	1		optional - 1/2" pitch, 7 tooth	A-56615	1
9	Includes: "O" RING-shaft	59074	1	44	Includes: BEARING-needle	56230	1
10	"O" RING-plunger	74388	1		SPROCKET & DRUM (Rim Type-opt.)	A-65548	1
11	SPRING-plunger	59293	1		Includes: DRUM & HUB	A-65991	1
*12	DRIVECASE	A-64264-B	1		SPROCKET-1/2" pt., 6 th.	67017	1
	Includes: TUBE-oil line (not shown)	59023	1		RACE-inner	65348	1
13	SEAL	56256-A	1		BEARING-needle	65393	1
14	BEARING-needle	63043	1	45	RACE-inner	56231	1
15	BOLT-guide bar	58334	2	46	WASHER-thrust (inner)	56236	1
16	BALL-check	25527	2	47	WORM-gear	63893	1
17	SPRING	59022	2	48	PUMP-automatic oil (short stroke)	A-64073-A	1
*18	SEAT-valve	A-67959	1		PUMP-automatic oil (long stroke-opt.)	A-67579	1
19	GASKET	67123	2	49	Includes: SEAL-felt	59926	1
*20	CAP-check valve	67958	2	50	"O" RING	59074	2
21	CAP-oil	A-63717-A	1	51	SCREW-cam	64102-A	1
22	Includes: GASKET	56607	1	52	GASKET	59736	1
23	KIT-bumper spiked	A-58543	1	53	SCREW	80919	2
	KIT-bumper spiked (optional) NOTE 1	A-63089	1	54	SCREW-hex, 8-32 x 1/2	80560	3
24	Includes: WASHER-lock, 1/4	83009	2	55	SCREW-hex, 12-24 x 3/4	80867	5
25	NUT-hex, 1/4-20	81053	2	56	HANDLE BAR-flush cut	A-65848-1	1
26	SCREW-flat, 1/4-20 x 3/4	80053	2		Optional:		
*27	PLATE-guide bar (inner)	67669	1		HANDLE BAR-wrap around	A-58398	1
*28	PLATE-guide bar (outer)	67670	1		HANDLE BAR-wrap around-NOTE 1	A-59922	1
29	COVER-drivecase	A-64074-1A	1		HANDLE BAR-reversible bow-NOTE 2	A-64727	1
30	Includes: NUT-5/16-18	81123	1	57	SCREW-hex, 5/16-18 x 1 1/2	80087	3
31	PIN-adjusting	55613-1	1	58	WASHER-lock, 5/16	83003	3
32	SCREW	80617	1				
33	PLATE-guard-NOTE 1	64029-1	1				
34	NUT-hex, 3/8-16	81089-2	2				
35	WASHER-flat, 3/8	84099	2				
36	NUT-hex, 3/8-24	81192	1				
37	WASHER-flat	64027	1				

NOTE 1 - #A-59922 Handle Bar requires 64029-1 Guard Plate
 NOTE 2 - #A-64727 Handle Bar requires 80886 Screw

Accessory
 A-67511 Drivecase Cover Kit (extended)

1050 Automatic



HL-222A

No.	Part No.	Description	Qty.	No.	Part No.	Description	Qty.
1	80551	SCREW-rd., 4-40 x 1/4	1	24	58526	COVER-strainer	1
2	83008-1	WASHER-lock, #4	2	25	28098	GASKET-cover	1
3	77430	SHUTTER-throttle	1	26	†58525	SCREW-cover	1
4	73086	CLIP-throttle shaft	1	27	55316	SCREW-flt, 6-32 x 13/16 w/lock washer	6
5	83000	WASHER-lock, #8	1	28	63692	COVER-diaphragm	1
6	73088	SCREW-flat, 8-32 x 5/16	1	29	†57829	DIAPHRAGM	1
7	63698	SHAFT & LEVER-choke	1	30	57824	GASKET-diaphragm	1
8	80006-1	SCREW-rd., 4-36 x 1/4	1	31	A-77429	NOZZLE-main	1
*9	64357	CAM-accelerating pump	1	32	†30818	PLUG-expansion	1
10	†A-63696	PLUNGER-pump	1	33	73067	PLUG-channel	1
11	†63694	SPRING-pump	1	34	A-55726	PIN-inlet lever	1
12	25527	BALL	1	35	63697	SHAFT & LEVER-throttle	1
13	73264	SPRING-choke friction	1	36	†58680	NEEDLE-idle adjusting	1
*14	†A-64779	NEEDLE & SEAT-inlet	1	37	†73075	SPRING-adjusting needle	2
15	†55344	Includes: GASKET	1	38	75735	WASHER-adjusting needle	2
16	†77426	SPRING-tension	1	39	75733	PACKING-adjusting needle	2
17	†55747	LEVER-inlet control	1	40	†58536	NEEDLE-main adjusting	1
18	77427	SHUTTER-choke	1	41	†63880	GASKET SET	1
19	58529	GASKET-fuel pump	1	42	63789	REPAIR KIT	1
20	†57729	DIAPHRAGM-fuel pump	1		63590	GASKET & DIAPHRAGM SET	1
21	59265	BODY-fuel pump	1				
22	†58527	SCREEN-fuel	1				
23	55751	GASKET	1				

* Denotes new parts
† Included in Repair Kit

Tools

A-24284	WRENCH-combination
23874	PLUG-needle bearing (conn. rod)
23528	WRENCH-socket screw (conn. rod)
22828	PLIERS-snap ring (piston)
23136-2	BODY-assembly
22820-2	ADAPTER-main bearing
A-23672	JACKSCREW
23670	PLATE-shaft aligning
23223-1	PLUG-seal assembly
23671	PLUG-drivecase seal
23693	SLEEVE-shaft (drivecase)

A-23696	REMOVER-spider
A-24028	REMOVER-rotor
23876	TOOL-drivecase bearing
23420	PLUG-clutch drum brg.

Paint

23475	SPRAY CAN-red
-------	---------------

Decal

#23742 composed of "Direct Drive", "Gear Drive", "Starting Instructions", and two "Homelite" (letters 1/2" and 1/4" high).

1050 Automatic

Part No.	Description	Qty.	Part No.	Description	Qty.	Part No.	Description	Qty.	Part No.	Description	Qty.
19238-3	Screw	2	58172-4	Tank	1	59978-A	Baffle-muffler	1	65712	Shield (outer)	1
22820-2	Adapter	1	58181-A	Trigger	1	59982-A	Stud	2	65830	Bushing	1
22828	Pliers	1	58185-A1	Brace	1	60929	Grommet	1	A-65848-1	Handle Bar	1
23136-2	Body	1	58190-S	Bearing	1	63043	Bearing	1	A-65991	Drum & Hub	1
23233-1	Plug	1	58292	Gasket	1	A-63071-D	Piston & Pin	1	67017	Sprocket	1
23420	Plug	1	58308-A	Seal	1	A-63072-A1	Crankcase	1	67122	Gasket	1
23475	Paint-red	1	58319-A	Ring	2	A-63089	Kit-bumper	1	67123	Gasket	2
23528	Wrench	1	A-58321	Lead	1	63103-1	Exchanger	1	67139	Cup-starter	1
23670	Plate	1	58334	Bolt	2	63290	Felt	1	67177	Bushing	1
23671	Plug	1	58337-A	Connector	1	63356	Gasket	1	A-67511	Kit-cover	1
A-23672	Jackscrew	1	A-58341-A	Reservoir-oil	1	A-63518	Spark Arrester	1	A-67579	Pump-oil	1
23693	Sleeve	1	58343	Gasket	2	63547-S	Spark Plug	1	*67669	Plate (inner)	1
A-23696	Remover	1	58348	Boot	1	63548	Shim	1	*67670	Plate (outer)	1
23742	Decal	1	58352-A	Spring	1	A-63585	Carburetor	1	*67958	Cap	2
2374	Plug	1	58353	Shaft	1	63590	Gasket & Dia.	1	*A-67959	Seat-valve	1
23876	Tool	1	A-58354	Rod-choke	1	63655-A	Gasket	2	72085-A	Plate-on-off	1
A-24028	Remover	1	58356-B	Rod-pump	1	63656	Line-fuel	1	73067	Plug	1
A-24284	Wrench-comb.	1	58357	Button	1	63657	Screw-idle	1	73075	Spring	2
25038	Gasket	1	58361	Stud	1	A-63661	Cylinder	1	73086	Clip-shaft	1
25527	Ball	3	58362	Grommet	4	63664	Spring	1	73088	Screw	1
27464	Stud	2	58364	Fitting	1	A-63665	Handle-throttle	1	73264	Spring	1
28098	Gasket	1	58367	Gasket	1	63692	Cover	1	74332	Pin	2
30818	Plug	1	58382	Lead	1	63694	Spring	1	74338	"O" Ring	1
55076-3	Shoe	6	58391	Spacer	1	A-63696	Plunger	1	75078	Key	1
55123-C	Spring	2	58392	Gasket	1	63697	Shaft & Lever	1	75733	Packing	2
55290	Sleeve	1	A-58398	Handle Bar	1	63698	Shaft & Lever	1	75735	Washer	2
55316	Screw	6	58404	Pin	1	A-63717-A	Cap-oil	1	77426	Spring	1
55344	Gasket	1	58405	Spring	1	63728	Element	1	77427	Shutter	1
A-55373-A	Terminal	1	58406	"O" Ring	1	63733-2	Shield-muffler	1	A-77429	Nozzle-main	1
55613-1	Pin	1	58409	Ring	1	63735	Cap	1	77430	Shutter-throttle	1
55680	Line	1	58517	Insert	1	A-63736-1	Shield-cyl.	1	FASTENING PARTS		
A-55726	Pin	1	58525	Screw-cover	1	63789	Repair Kit	1	80006-1	4-36 x 1/4	1
55747	Lever	1	58526	Cover-strainer	1	63880	Gasket Set	1	80053	1/4-20 x 3/4	2
55751	Gasket	1	58527	Screen-fuel	1	A-63828	Manifold	1	80087	5/16-18 x 1 1/2	3
55805	Line	1	58529	Gasket	1	63855-A	Screw	3	80345	10-32 x 5/8	2
55871	Stud	4	58536	Needle-main	1	63893	Worm	1	80402	1/4-20 x 5/8	1
55937	Grip	1	A-58543	Kit-bumper	1	A-64010	Line-oil	1	80513	6 x 1/2	15
55946	Gasket	1	58546-2	Spider	1	64027	Washer-flat	1	80560	8-32 x 1/2	3
55982	Nut	1	58680	Needle-idle	1	64029-1	Plate-guard	1	80591	4-40 x 1/4	1
55978-2	Gasket	1	58756	Pawl	2	64049-A	Lock	1	80595	10-24 x 1/2	1
55979	Cover	1	58758-1	Spring	2	64050-1	Pulley	1	80617	5/16-18 x 2	1
55980	Clamp	1	58763	Washer	1	64052	Shield	1	80625	10-32 x 1/2	2
55983	Washer	1	58806	Rope	1	64053-A	Rotor	1	80648	10-32 x 1/2	1
55984	Wick	1	58837-2	Deflector	1	64054	Stud	2	80658	4-40 x 3/16	8
55986-A	Coil	1	58951	Washer	2	A-64068	Crankshaft	1	80660	10-24 x 7/8	1
55987	Condenser	1	58929	Bushing	2	A-64073-A	Pump-oil	1	80676	12-24 x 5/8	3
56014	Clamp	1	58930	Stop	1	A-64074-1A	Cover-drivecase	1	80837	12-24 x 3/8	2
56132	Washer	1	59022	Spring	2	64102-A	Screw	1	80864	12-24 x 1	5
56230	Bearing	1	59023	Tube-oil	1	A-64140-1	Cap-fuel	1	80867	12-24 x 3/4	19
56231	Race-inner	1	59064	Bushing	1	64144	Decal	1	80869-1	10-32 x 3/8	5
56236	Washer	1	59074	"O" Ring	3	A-64178-3	Cover-starter	1	80882	1/4-20 x 1 1/2	2
56238-A	Cover	1	59094-1	Housing-fan	1	64180-A	Spring	1	80886	5/16-18 x 7/8	1
56256-A	Seal	1	A-59229	Nut-cover	1	*A-64264-B	Drivecase	1	80919	4-40 x 1/4	2
56290	Ring	1	59230-1	Cover-filter	1	A-64293	Filter-oil	1	81013-1	Nut-1/4-20	2
56291	Piston Ring	2	A-59251	Filter	1	*64357	Cam-pump	1	81053	Nut-1/4-20	2
56292-A	Seal	1	59253-1	Filter	1	64408	Cap-muffler	1	81065-2	Nut-1/4-28	4
A-56299	Spkt. & Drum	1	59265	Body-pump	1	64409-2	Shield-muffler	1	81089-2	Nut-3/8-16	2
56607	Gasket	1	59293	Spring	1	A-64410	Body-muffler	1	81104	Nut-7/16-20	1
A-56615	Spkt. & Drum	1	59338	Rod-throttle	1	A-64411	Muffler & Shield	1	81123	Nut-5/16-18	1
57289-1	Button	1	59606	Bearing	1	64607	Plug	1	81192	Nut-3/8-24	1
A-57341	Spkt. & Drum	1	59627-1	Seat-reed	1	A-64678	Rollers-set	1	82156	8-32 x 3/4	5
A-57650-3	Switch	1	59628	Reed	4	A-64727	Handle Bar	1	83000	Washer-#8	1
57729	Diaphragm	1	59629	Clamp	4	64743	Ring	1	83003	Washer-5/16	3
57733	Tab	1	59674	Line-oil	1	A-64744	Plug	1	83008-1	Washer-#4	2
57744	Box-breaker	1	59736	Gasket	1	*A-64779	Needle & Seat	1	83009	Washer-1/4	8
57749	Screw Group	1	59920-2	Cover-tank	1	65348	Race-inner	1	83046	Washer-#10	3
57750	Screw Group	1	A-59922	Handle Bar	1	65358	Gasket	1	83061	Washer	2
57824	Gasket	1	59926	Seal	1	65390-1	Screen-fan	1	84047	Washer	1
57829	Diaphragm	1	A-59927-B	Body-muffler	1	65393	Bearing	1	84099	Washer-3/8	2
A-57834-10	Plunger	1	A-59945	Rod-conn.	1	A-65548	Spkt. & Drum	1	86301	Pin-cotter	2
A-58165	Point Set	1	A-59963	Cap-muffler	1	65711	Shield (inner)	1	86324	Pin-cotter	1

*Denotes new parts

Leon's Chainsaw Parts & Repair
Do Not Sell or Reproduce

1050 AUTOMATIC

HOMELITE®

A **Textron**
DIVISION

PORT CHESTER, N.Y. U.S.A.