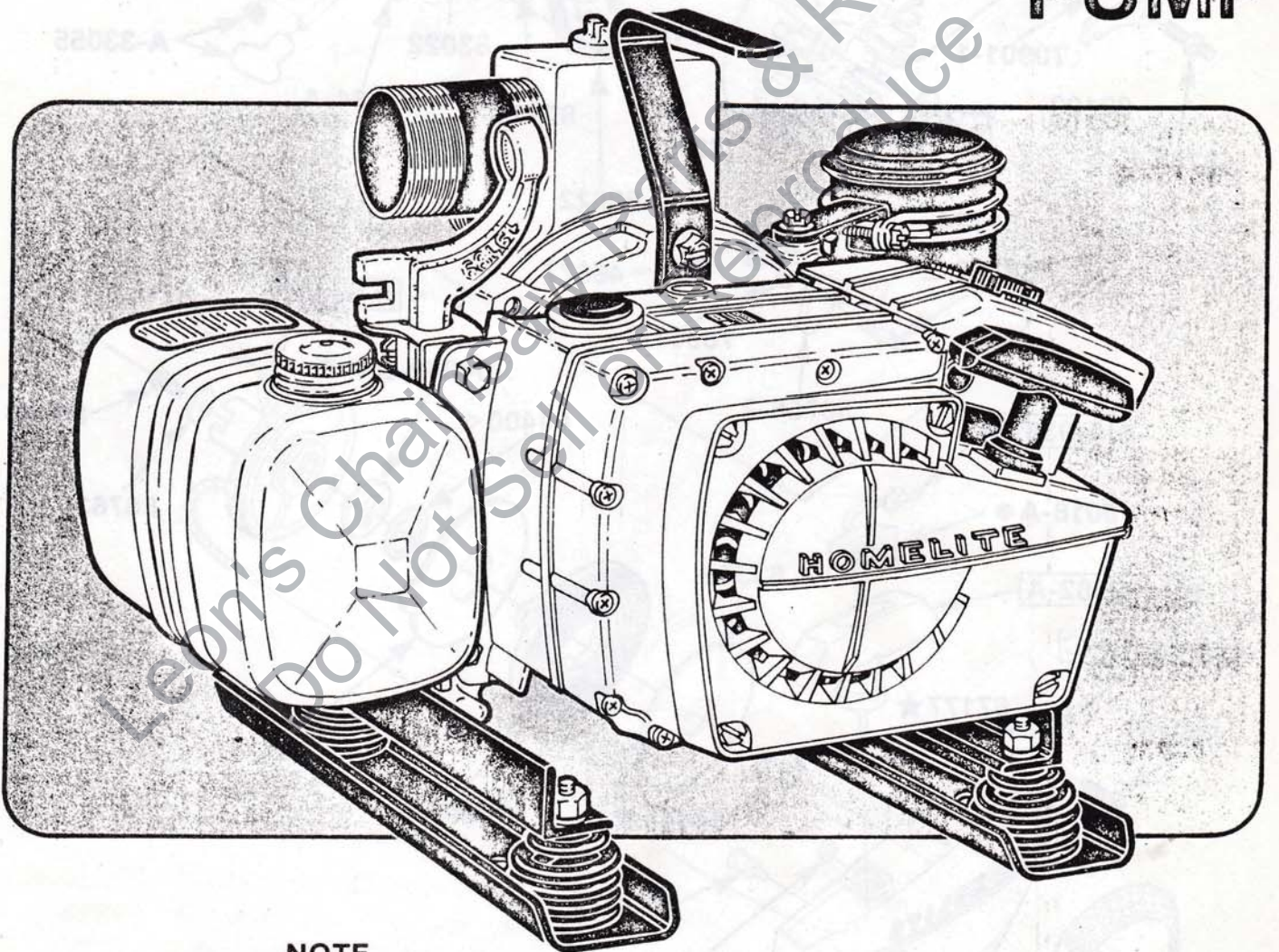


ILLUSTRATED PARTS LIST

PART NO. 17324
PRINTED IN CANADA
Price .35¢

HOMELITE XLS 2-1B PUMP



NOTE

All Assemblies have a box around them and are listed with a symbol in front of them.

■ 12345

All Parts that are included in the Assembly have the same symbol after the part number.

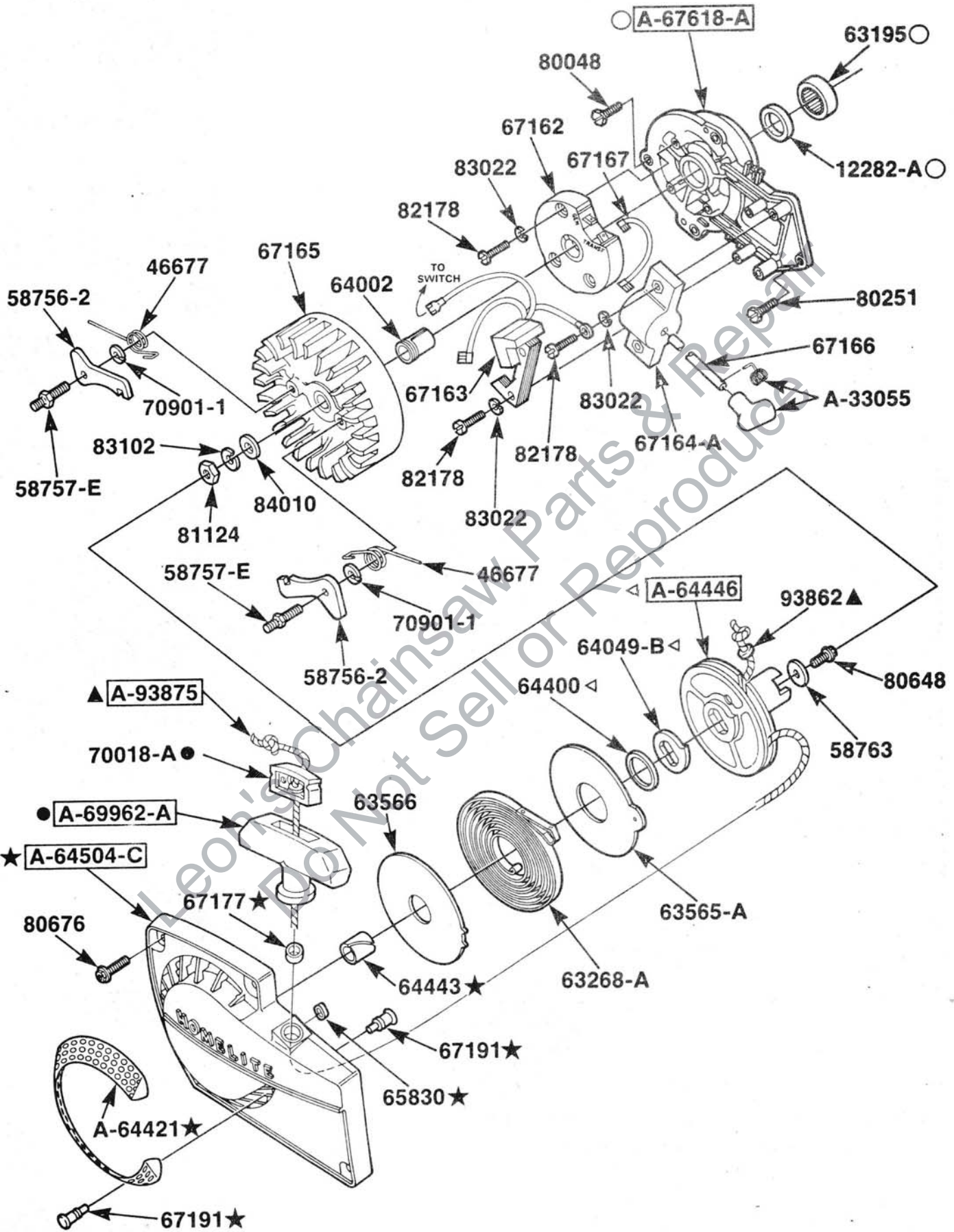
12346 ■

HOMELITE-TERRY
TEXTRON

Homelite-Terry
Division of Textron Canada Limited

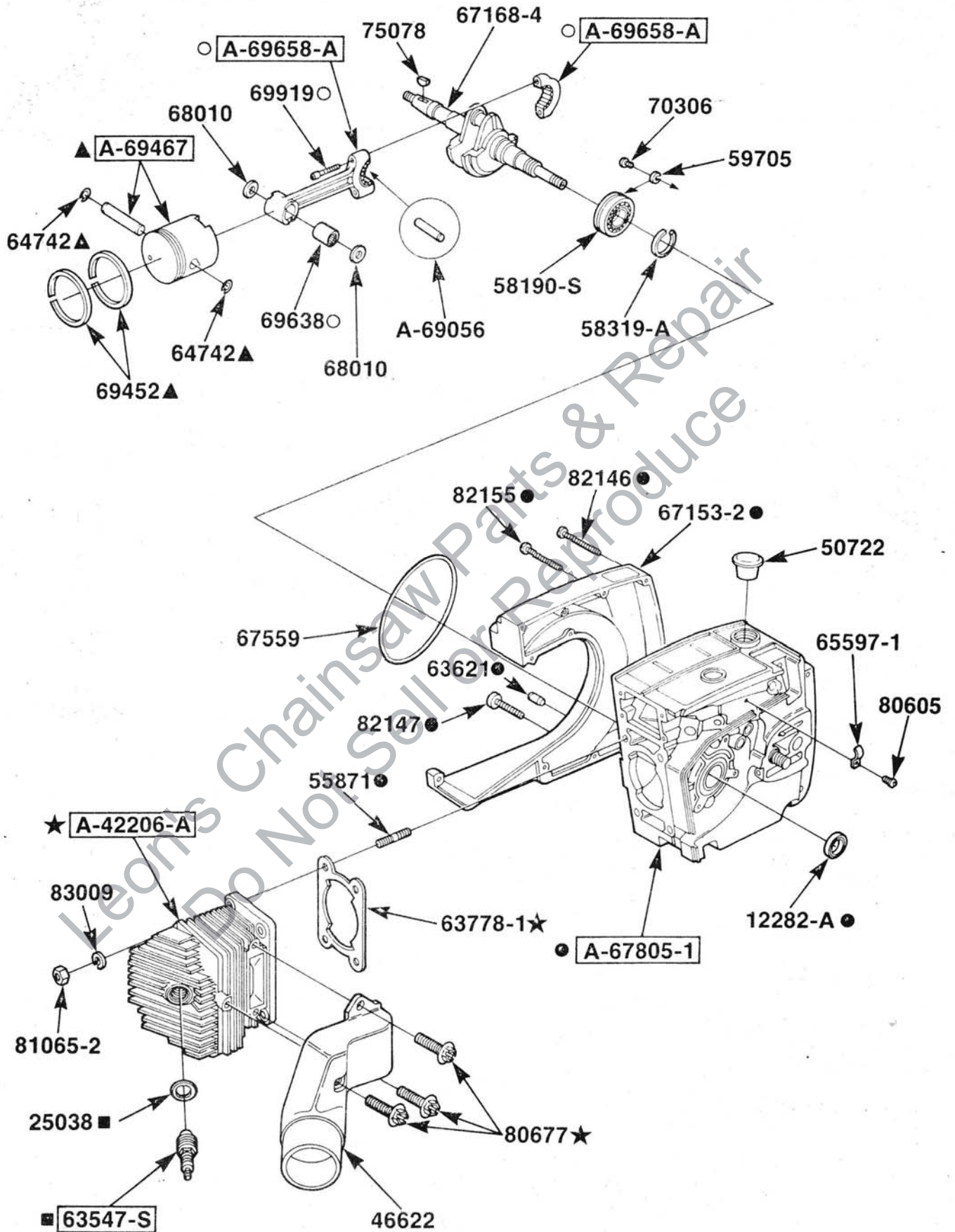
XLS 2-1B

INCLUDES INCLUDED IN



XLS 2-1B

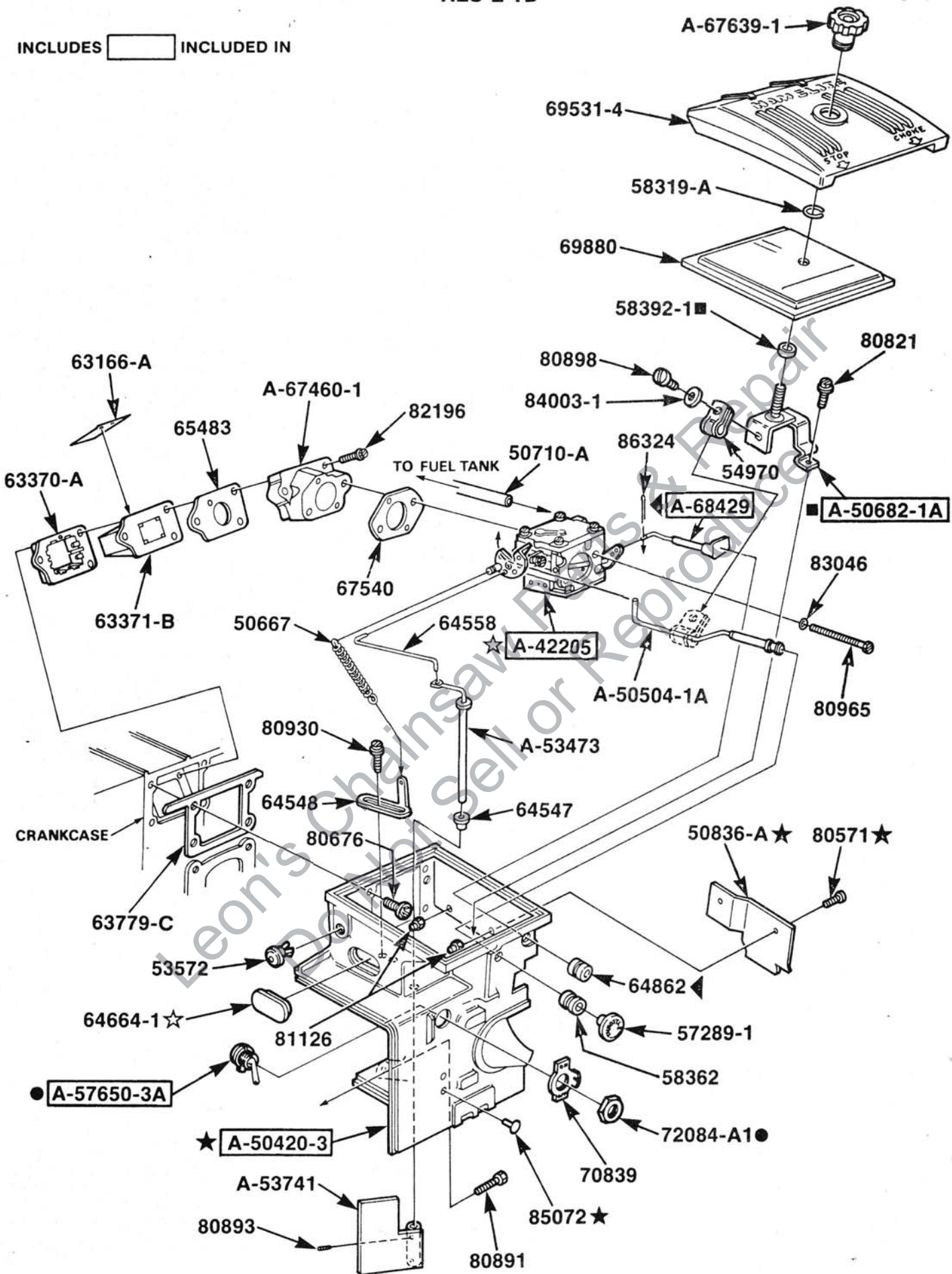
INCLUDES INCLUDED IN



ALWAYS FURNISH MODEL AND SERIAL NUMBER WHEN ORDERING PARTS.

XLS 2-1B

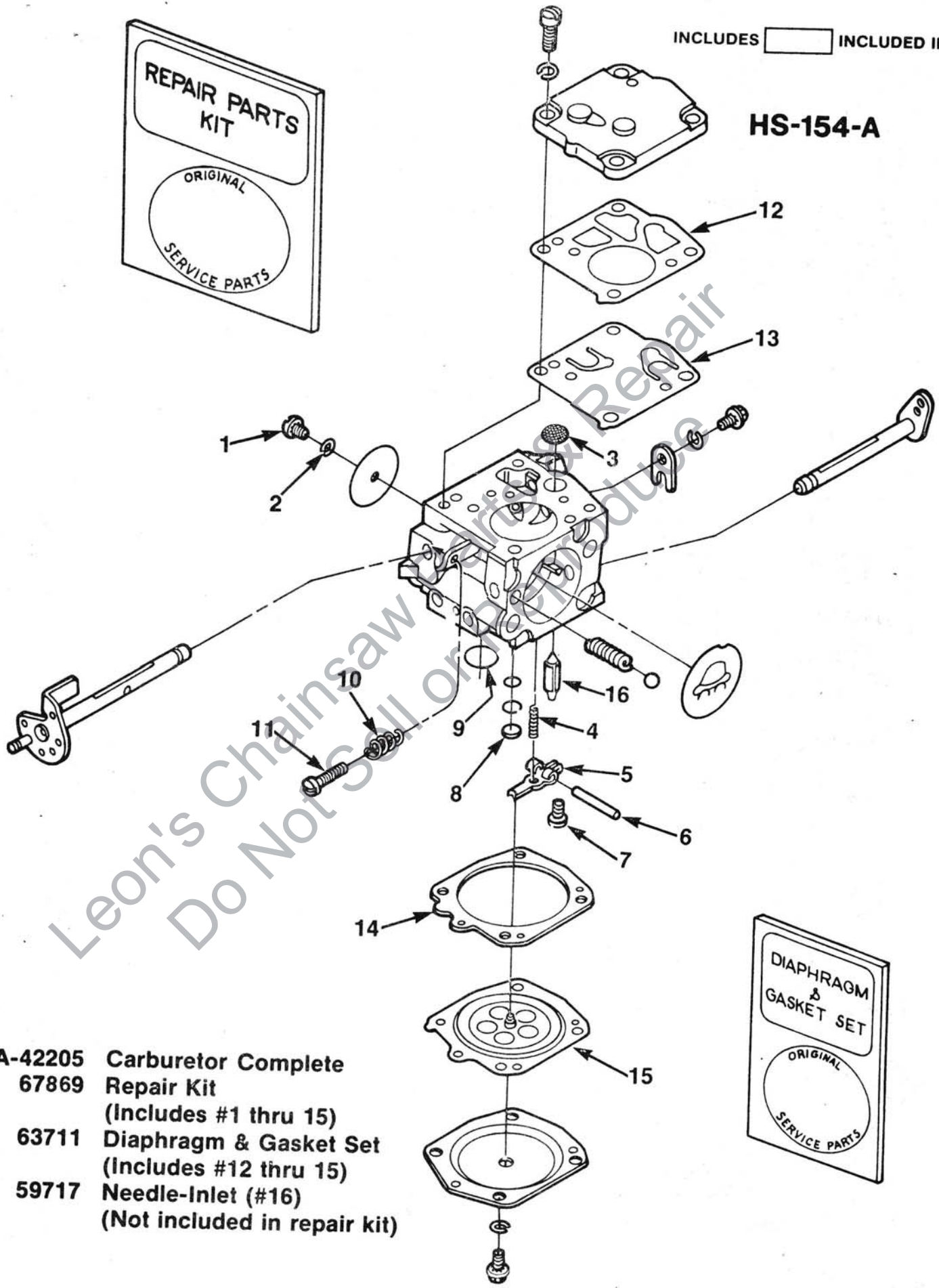
INCLUDES INCLUDED IN



XLS 2-1B

INCLUDES INCLUDED IN

HS-154-A

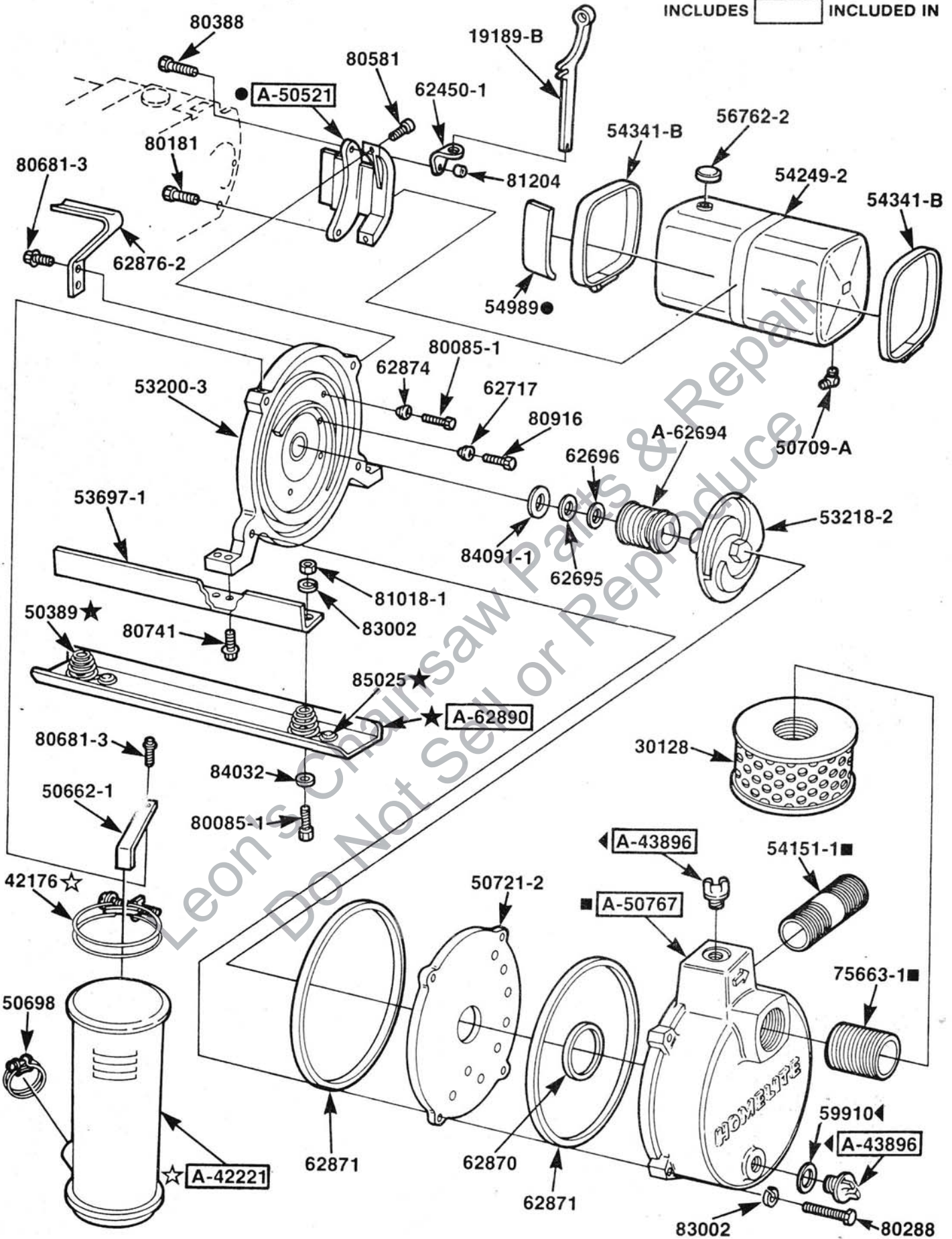


- A-42205 Carburetor Complete**
- 67869 Repair Kit**
(Includes #1 thru 15)
- 63711 Diaphragm & Gasket Set**
(Includes #12 thru 15)
- 59717 Needle-Inlet (#16)**
(Not included in repair kit)



XLS 2-1B

INCLUDES INCLUDED IN



XLS 2-1B

NUMERICAL LISTING

TOOLS

| DESCRIPTION | PART NO. | DESCRIPTION | PART NO. |
|---|------------|--------------------------|------------|
| SEAL | 12282-A | SHAFT- Vane | A-53473 |
| WRENCH- Spanner | 19189-B | ANGLE | 53697-1 |
| PAINT- Black | 22772 | PLUG- Plastic | 53572 |
| COLLAR- Bearing installation | 22820-3 | VANE- Air | A-53741 |
| PLIERS- Retaining ring | 22828 | FITTING- Pipe discharge | 54151-1 |
| SLEEVE- Bearing & shaft installation | 23136-2 | TANK- Fuel | 54249-2 |
| LOCTITE | 23488-B | CLAMP | 54341-B |
| WRENCH- Socket screw | 23528 | CLIP | 54970 |
| SLEEVE- Seal protecting | 23759 | SPACER | 54989 |
| ANVIL- Crankshaft installation | 23846-1 | STUD | 55871 |
| ANVIL- Bearing disassembly | 23846-2 | CAP- Fuel filler | 56762-2 |
| PLUG- Bearing installation | 23955 | BUTTON- Choke rod | 57289-1 |
| PLUG- Bearing & seal installation | 23956 | SWITCH- Grounding | A-57650-3A |
| PLUG- Seal installation | 23957 | BEARING- Ball | 58190-S |
| PULLER- Rotor remover | A-23960 | RING- Retaining | 58319-A |
| JACKSCREW- Bearing removal | A-23962 | GROMMET | 58362 |
| SLEEVE- Seal installation | 23972 | GASKET | 58392-1 |
| PAINT- Blue | 24453 | PAWL- Starter | 58756-2 |
| JACKSCREW- Includes 84035 washer (flat 1) | A-24570 | STUD- Pawl | 58757-E |
| SEALANT | 24823 | WASHER- Retaining | 58763 |
| BIT- Driver torx | 24982-01 | WASHER- Lock | 59705 |
| BIT- Driver torx | 24982-02 | NEEDLE- Inlet | 59717 |
| GASKET | 25038 | GASKET | 59910 |
| STRAINER | 30128 | BRACKET- Spanner wrench | 62450-1 |
| TERMINAL | A-33055 | SEAL | A-62694 |
| CLAMP- 4 1/4 | 42176 | SHIM- .015 | 62695 |
| CARBURETOR- HS154-A | A-42205 | SHIM- .010 | 62696 |
| CYLINDER | A-42206-A | WASHER- Sealing, #12 | 62717 |
| MUFFLER | A-42221 | GASKET- Impeller housing | 62870 |
| CAP- Drain and fill | A-43896 | GASKET- Back-plate | 62871 |
| MANIFOLD- Exhaust | 46622 | WASHER- Sealing | 62874 |
| SPRING- Starter pawl | 46677 | HANDLE- Carrying | 62876-2 |
| SPRING- Foot | 50389 | SKID | A-62890 |
| CHAMBER- Carburetor | A-50420-3 | REED- Valve | 63166-A |
| ROD- Throttle | A-50504-1A | BEARING- Roller | 63195 |
| BRACKET- Fuel tank | A-50521 | SPRING- Rewind | 63268-A |
| BRACKET- Muffler | 50662-1 | RETAINER- Reed valve | 63370-A |
| SPRING- Governor | 50667 | SEAT- Reed valve | 63371-B |
| BRACKET- Filter cover | A-50682-1A | SPARK PLUG | 63547-S |
| CLAMP- 1-5/8 | 50698 | SHIELD- Spring outer | 63565-A |
| ELBOW- Screen | 50709-A | SHIELD- Spring inner | 63566 |
| LINE- Fuel | 50710-A | PIN- Dowel | 63621 |
| PLATE- Wear | 50721-2 | DIAPHRAGM & GASKET SET | 63711 |
| PLUG- Plastic | 50722 | GASKET- Cylinder | 63778-1 |
| HOUSING- End | A-50767 | GASKET- Throttle handle | 63779-C |
| DEFLECTOR- Air | 50836-A | CAP- Dust | 64002 |
| HOUSING- Impeller | 53200-3 | LOCK- Rewind spring | 64049-B |
| IMPELLER | 53218-2 | BUSHING- Spring lock | 64400 |

XLS 2-1B

NUMERICAL LISTING

| DESCRIPTION | PART NO. | DESCRIPTION | PART NO. |
|----------------------------|-----------|--|----------|
| SCREEN- Fan housing | A-64421 | SCREW- Hex hd. cap 1/4-20 x 5/8 | 80048 |
| BUSHING- Starter post | 64443 | SCREW- Hex 5/16-18 x 1" | 80085-1 |
| PULLEY- Rewind starter | A-64446 | SCREW- Hex hd., 1/4-20 x 7/8 | 80181 |
| HOUSING- Fan | A-64504-C | SCREW- Rd. hd., 1/4-20 x 5/8 | 80251 |
| BUSHING- Air vane shaft | 64547 | SCREW- Hex hd., 5/16-18 x 1 3/4 | 80288 |
| PLATE- Speed adjusting | 64548 | SCREW- Hex hd., 1/4-20 x 1-1/4 | 80388 |
| LINK- Carburetor | 64558 | SCREW- Pan hd., 6-32 x 3/8 | 80571 |
| GROMMET | 64664-1 | SCREW- Hex hd., 1/4-20 x 5/8 | 80581 |
| RING- Piston pin retaining | 64742 | SCREW- Pan hd., 6-32 x 5/16 | 80605 |
| RING- Piston pin retaining | 64862 | SCREW- Hex hd., 10-32 x 1/2 | 80648 |
| GASKET- Reed valve seat | 65483 | SCREW- Hex hd. spinlock, 12-24 x 5/8 | 80676 |
| CLAMP- Fuel line | 65597-1 | SCREW- Hex hd., 1/4-20 x 5/8 | 80677 |
| BUSHING- Rewind spring | 65830 | SCREW- Hex hd., 1/4-20 x 1/2 | 80681-3 |
| COVER- Fuel tank | 67153-2 | SCREW- Hex hd. 5/16-18 x 5/8 | 80741 |
| MODULE- Ignition | 67162 | SCREW- Hex 12-24 x 1/2 | 80821 |
| COIL AND CORE | 67163 | SCREW- Hex hd. spinlock, 12-24 x 7/8 | 80891 |
| COIL- Transformer | 67164-A | SCREW- Set, 4-40 x 1/8 | 80893 |
| ROTOR- Magneto | 67165 | SCREW- Pan hd., 10-32 x 3/8 (self tapping) | 80898 |
| LEAD- High tension | 67166 | SCREW- Pan hd. 12-24 x 3/4 | 80916 |
| LEAD- Transformer | 67167 | SCREW- Pan hd. spinlock, 6-32 x 3/16 | 80930 |
| CRANKSHAFT | 67168-4 | SCREW- Hex hd., 10-32 x 5 | 80965 |
| BUSHING- Starting rope | 67177 | NUT- 5/16-18 | 81018-1 |
| STUD- Drive | 67191 | NUT- Hex, 1/4-28 | 81065-2 |
| MANIFOLD- Intake | A-67460-1 | NUT- Hex jam, 3/8-24 | 81124 |
| GASKET- Carburetor inlet | 67540 | NUT- Hex, 6/32 | 81126 |
| "O" RING | 67559 | NUT- Flexlock, 1/4-20 | 81204 |
| PLATE- Back | A-67618-A | SCREW- Fil. hd., 8-32 x 5/8 | 82146 |
| NUT- Mounting | A-67639-1 | SCREW- Fil. hd., 8-32 x 1-3/4 | 82147 |
| REPAIR KIT | 67869 | SCREW- Fil. hd., 8-32 x 2-3/16 | 82155 |
| CRANKCASE | A-67805-1 | SCREW- Pan hd. 8-32 x 3/4 | 82178 |
| WASHER- Thrust | 68010 | SCREW- Pan hd., 8-32 x 1-1/8 | 82196 |
| ROD- Choke | A-68429 | LOCKWASHER- 5/16 | 83002 |
| BEARING (needle set of 8) | A-69056 | WASHER- Lock 1/4 | 83009 |
| RING- Piston | 69452 | WASHER- .020 | 83022 |
| PISTON | A-69467 | WASHER- Lock, #10 | 83046 |
| COVER- Air filter | 69531-4 | WASHER- Lock, 3/8 | 83102 |
| BEARING- Needle | 69638 | SCREW- Pan hd., 10-32 x 3/8 self tapping | 84003-1 |
| ROD- Connecting | A-69658-A | WASHER- Flat, 3/8 | 84010 |
| FILTER- Air | 69880 | WASHER- Flat, 5/16-3/4 | 84032 |
| SCREW- Socket hd. cap | 69919 | WASHER- .064 thick, 7/8 Q.D. | 84091-1 |
| GRIP- Starting rope | A-69962-A | RIVET | 85025 |
| INSERT- Rope retaining | 70018-A | RIVET- Tubular, 1/8-3/8- x 5/16 | 85072 |
| SCREW- Bearing retaining | 70306 | PIN- Cotter | 86324 |
| PLATE- Indicating "ON-OFF" | 70839 | WASHER- Flat (nylon) | 93862 |
| WASHER- Lock, #12 | 70901-1 | ROPE- Starting, 48" | A-93875 |
| NUT- Hex | 72084-A1 | | |
| KEY- Woodruff | 75078 | | |
| FITTING- Pipe inlet | 75663-1 | | |

ZTR0160

HOMELITE-TERRY **TEXTRON**

Homelite-Terry Division of Textron Canada Limited

Q M