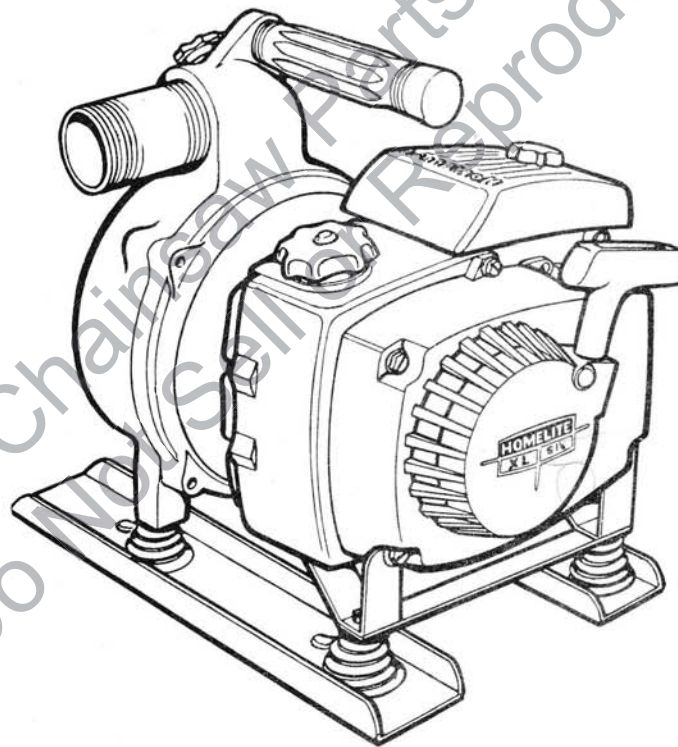


PART NO. 23828-T  
PRICE .25

PARTS LIST - 1972



# PUMPS

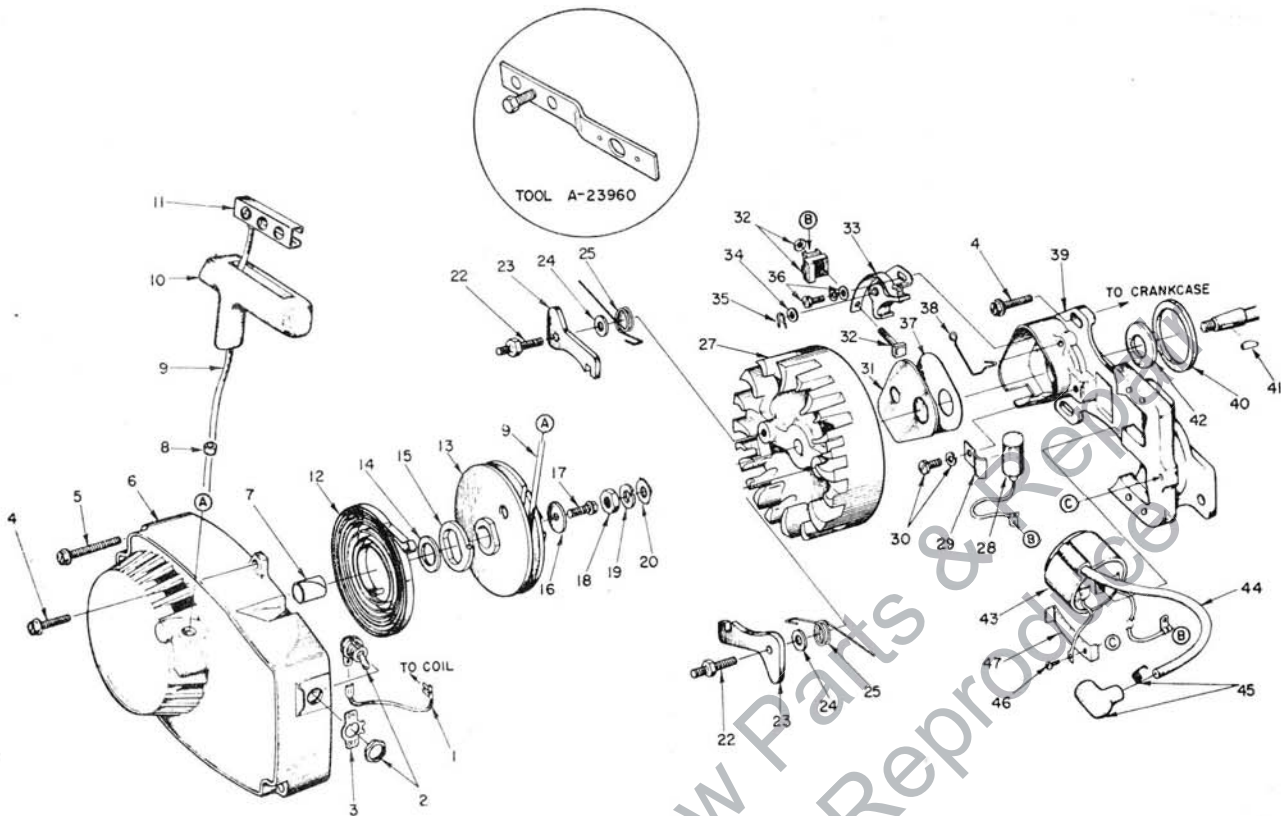


## MODELS:

XLS 1 1/2-1

Standard Threads

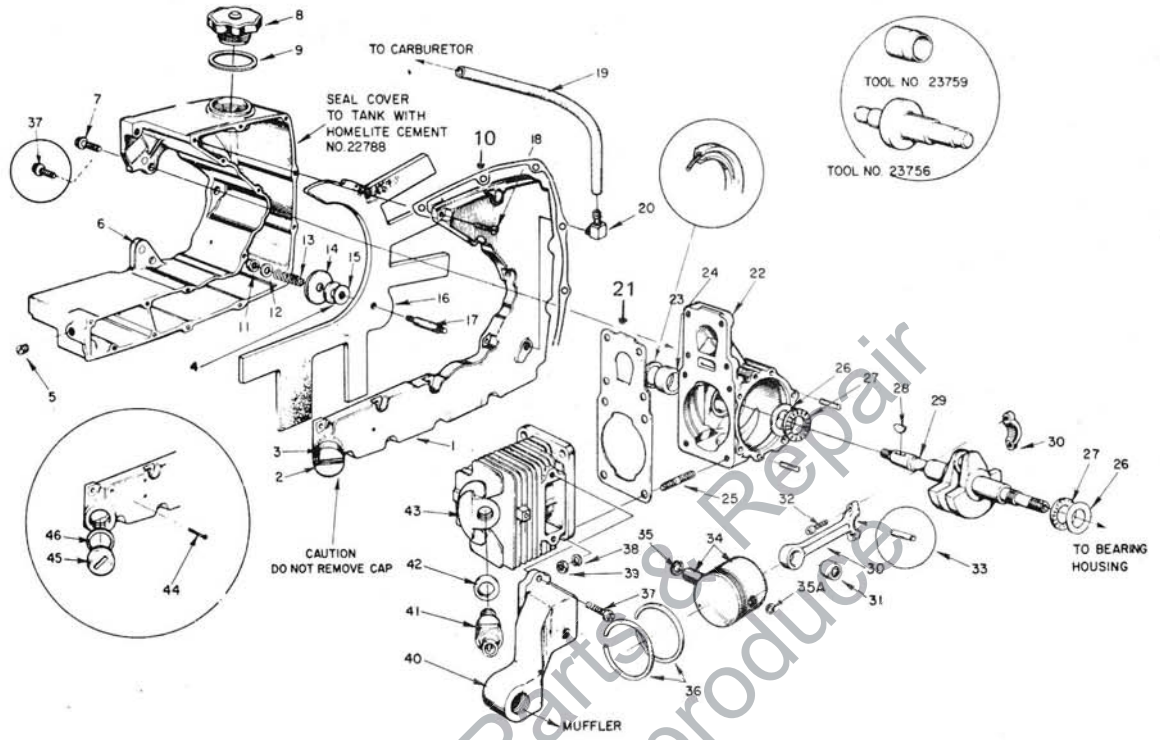
XLS 1 1/2-1A



Key	Part No.	Description	-1	-1A	Qty.	Key	Part No.	Description	-1	-1A	Qty.
1	‡A-59031	LEAD - ground w/terminals	x	x	1	27	58809	ROTOR - magneto	x	x	1
2	A-57650-3	SWITCH - w/nut	x	x	1	28	63250	CONDENSER	x	x	1
3	72085-A	PLATE - "ON-OFF"	x	x	1	29	59622	CLAMP - condenser	x	x	1
4	80676	SCREW - hex hd, 12-24 x 5/8"	x	x	1	30	30261	SCREW GROUP - condenser	x	x	1
5	58963	SCREW - hex hd, 12-24 x 1 11/16"	x	x	3	31	58811	COVER - breaker box	x	x	1
6	A-64516-T	FAN HOUSING	x	x	1	32	A-58934	TERMINAL BLOCK GROUP	x	x	1
7	64443	Includes: BUSHING - starter post	x	x	1	33	A-58914	POINT SET - w/felt	x	x	1
8	67177	BUSHING - rope	x	x	1	34	28028	Includes: WASHER - point	x	x	1 or 2
9	58806	ROPE - starter	x	x	1	35	28008	CLIP - point pivot post	x	x	1
10	58915	GRIP - rope	x	x	1	36	76421	SCREW GROUP - points	x	x	1
11	58847-T	INSERT	x	x	1	37	58810	GASKET - cover	x	x	1
12	58764-A	SPRING - recoil	x	x	1	38	76413	SPRING - cover	x	x	1
13	A-64446	PULLEY - starter	x	x	1	39	58875-A	BOX - breaker	x	x	1
14	64400	Includes: BUSHING - spring lock	x	x	1	40	59538	GASKET	x	x	1
15	64049-A	LOCK - spring	x	x	1	41	75078	KEY - rotor	x	x	1
16	58763	WASHER - retaining	x	x	1	42	59760	SEAL - felt	x	x	1
17	80648	SCREW - hex hd, 10-32 x 1/2"	x	x	1	43	58874	COIL	x	x	1
18	81117	NUT - hex hd, 5/16-24	x	x	1	44	‡54972	LEAD - hi tension	x		1
19	83002	WASHER - lock, 5/16	x	x	1		58966	LEAD - hi tension	x		1
20	84056	WASHER - flat, 5/16	x	x	1		A-33055	TERMINAL	x	x	1
22	58757-B	STUD - shoulder	x	x	2	45	58872	SCREW - coil ground	x	x	1
23	58756	PAWL - starter	x	x	2	47	63726	CLIP - coil retaining	x	x	1
24	83056	WASHER	x	x	2						
25	65375-2	SPRING - starter pawl	x	x	2						

‡ 3" of #20 insulated, stranded wire with one straight (1/4") snap-on terminal, and one flag (3/16") snap-on terminal.

‡ 8-1/2" 7MM (O. D.) hi-tension cable.



Key	Part No.	Description	-1	-1A	Qty.
1	A-63271-T	COVER - fuel tank, NOTE 2 Includes:	x	x	1
2	A-56580-1	CAP - slotted	x	x	1
3	56607	w/GASKET	x	x	1
4	59457	WASHER - felt	x	x	1
5	59571	PLUG - pipe	x	x	1
6	58732-4T	TANK - fuel and oil, NOTE 3	x	x	1
7	63407	SCREW - shoulder, 1/4-20x3/4, NOTE 4	x	x	3
8	A-69464-1	CAP - fuel filler Includes:	x	x	1
9	65358	GASKET	x	x	1
10	120184	GASKET	x	x	1
11	81109	NUT - lock, 10-32	x	x	1
12	84003-1	WASHER - flat, #10	x	x	1
13	58867	SPRING - compression	x	x	1
14	58866	WASHER - wick	x	x	1
15	58865	GASKET	x	x	1
16	58862	WICK - fuel pick-up	x	x	1
17	58519	STUD - wick	x	x	1
18	120660	SCREW - rd., #8 x 5/8	x	x	16
19	59644	FUEL LINE - flexible	x	x	1
20	59642	ELBOW - fuel line	x	x	1
21	58513	GASKET	x	x	1
22	A-58799-D	CRANKCASE, NOTE 5 Includes:	x	x	1
23	58688-A	SEAL	x	x	1
24	58956	BEARING	x	x	1
25	55871	STUD	x	x	4

Key	Part No.	Description	-1	-1A	Qty.
26	58725	RACE - thrust bearing	x	x	2
27	58726	BEARING - needle thrust	x	x	2
28	75078	KEY - rotor	x	x	1
29	58439-1	CRANKSHAFT	x		1
	63497-1	CRANKSHAFT		x	1
30	A-58769	CONNECTING ROD	x		1
	A-63477	CONNECTING ROD		x	1
		Includes:			
31	58724	BEARING	x	x	1
32	80541	SCREW - socket, 8-32 x 1/2	x	x	2
33	A-58864	ROLLERS - set (28)	x		1
	A-63496	ROLLERS - set (31)		x	1
34	A-121689	KIT, PISTON SERVICE Includes:	x	x	1
		Includes:			
35	75120	RING - retaining	x	x	1
35A	64813	RING - retaining	x	x	1
36	58877	RING - piston	x	x	2
37	80867	SCREW - hex, 12-24 x 3/4, NOTE 6	x	x	as req'd
38	83009	WASHER - lock, 1/4	x	x	4
39	81065-2	NUT - 1/4-28	x	x	4
40	59548-2	MANIFOLD	x	x	1
41	63547-S	SPARK PLUG,	x	x	1
	54576-S	SPARK PLUG, Includes:			
42	25038	GASKET	x	x	1
43	A-122319	CYLINDER, NOTE 7	x	x	1
44	86301	COTTER PIN	x	x	1
45	59594-A	CAP - drain & filler (spare)	x	x	1
46	59910	GASKET	x	x	1

NOTE 2 - Recommended service replacement of Cover #A-63271 used for all model XLS 1-1/2 pumps; does not require cotter pin (index #44).

NOTE 3 - Service replacement Tank #58732-4 has 1/4" mounting holes, requires three 1/4-20 x 3/4 screws (#63407) and mating 1/4-20 tapped holes in crankcase. See Notes 4 and 5.

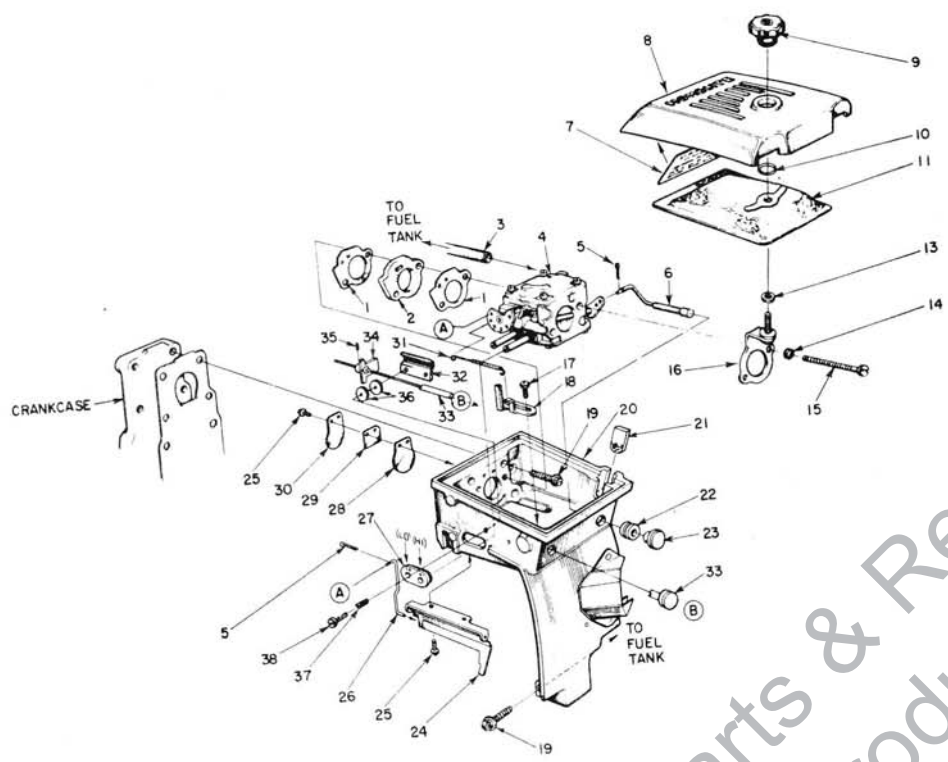
NOTE 4 - Shoulder Screw #63407 requires 1/4" holes in fuel tank ("F" drill) and three 1/4-20 tapped holes in crankcase. See Notes 3 and 5.

NOTE 5 - Service replacement crankcase has three 1/4-20 tapped holes for tank mounting screws. Early crankcase, with 12-24 threads, may be tapped out. See Notes 3 and 4.

NOTE 6 - Only two #80867 screws, to mount Manifold, used in XLS 1-1/2-1A and XLS 1-1/2-2A models. Five #80867 screws, to mount Manifold and early Tank (3/16" holes), used in XLS 1-1/2-1 and XLS 1-1/2-2 models. See Notes 3 and 5.

NOTE 7 - Cylinder #A-122319 is service replacement for all XLS 1-1/2 pump models.





Key	Part No.	Description	Qty.	Key	Part No.	Description	Qty.
1	58537-A	GASKET - carburetor	2	19	80891	SCREW - hex hd, 12-24 x 7/8	5
2	58780	SPACER - carburetor	1	20	A-59607	CHAMBER - carburetor - See NOTE 8	1
3	59644	FUEL LINE - flexible	1			Includes:	
4	A-59535-B	CARBURETOR	1			PLUG - button, 3/16"	2
	† 67866	GASKET SET	1			PLUG - button, 1/4"	1
	67869	REPAIR PARTS KIT	1			COTTER PIN	1
5	86324	COTTER PIN	2	21	59329	PLUG - felt	1
6	A-58826	ROD - choke	1	22	58362	GROMMET	1
8	58773-5	COVER - air filter	1	23	57289-1	BUTTON	1
9	A-58882	NUT - cover	1	24	A-59301-A	GOVERNOR - air vane	1
10	58319-A	RING - retaining	1	25	80658	SCREW - pan hd, 4-40 x 3/16	4
11	83589	ELEMENT - air filter	1	26	59260	LINK - governor	1
13	58392-1	GASKET - mounting stud	1	27	59058	GROMMET - "LO-HI"	1
14	83046	WASHER - lock #10	2	28	58775	REED	1
15	80481	SCREW - hex hd, 10-32 x 2-1/4	2	29	59053	BACK-UP - reed	1
16	A-58818-A	BRACKET - mounting	1	30	58776	STOP - reed	1
17	80575	SCREW - bind hd, 8-32 x 1/4	2	31	59242	SPRING - governor	1
18	A-59299	PLATE - speed adjusting	1			Used in XLS 1-1/2-1A.	
				32	59367	CLAMP - throttle rod	1
				33	A-62935	ROD - throttle	1
				34	A-59285	COLLAR - throttle rod	1
				35	80893	SCREW - set, 4-40 x 1/8	1
				36	84025	WASHER - flat, #8	2
				37	75892	SPRING	2
				38	80577	SCREW - pan, 8-32 x 3/8	2

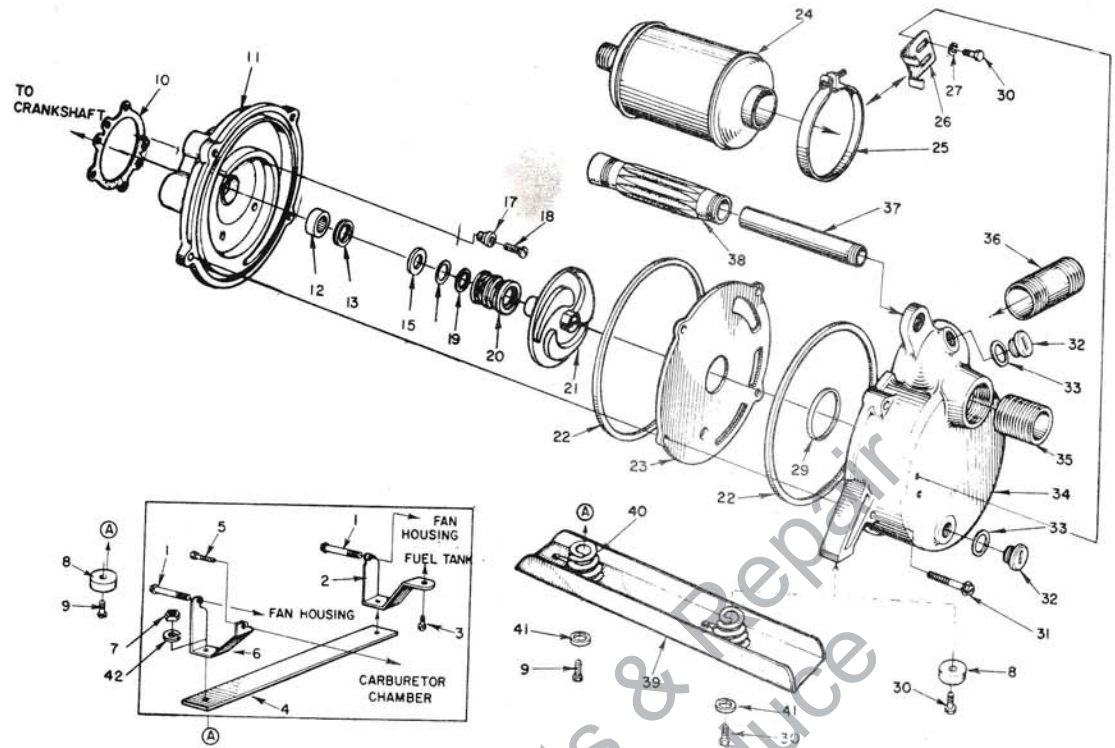
SPECIAL TOOLS (available on order)

Part No.	Description
22139	SPANNER WRENCH
A-22805	COMBINATION WRENCH -
A-23937-B	COMBINATION WRENCH
22828	PLIERS - piston snap ring
23528	WRENCH - socket screw (conn. rod)
†† 23756	BEARING ASSEMBLY & DISASSEMBLY - conn. rod
A-23949	PLUG - piston pin removal
23757	BEARING ASSEMBLY & DISASSEMBLY - drive & crankcase
23758	SEAL ASSEMBLY - drive & crankcase
†† 23759	SLEEVE - crankshaft assembly
†† A-23960	REMOVER & LOCKING BRACKET - rotor
23800	SEAL ASSEMBLY TOOL

† Included in Repair Parts Kit #67869.

NOTE 8 - Service replacement chamber #A-59607 supplied with three holes plugged, remove these plugs to mount throttle rod and rod clamp.

†† Illustrated



Key	Part No.	Description	-1	-1A	Qty.	Key	Part No.	Description	-1	-1A	Qty.
1	58963	SCREW - hex hd, 12-24 x 1-11/16	x	x	2	23	62693-3	PLATE - wear	x	x	1
2	59196-2	LEG - Left	x	x	1	24	59550-1	MUFFLER	x	x	1
3	80821	SCREW - hex hd, 12-24 x 1/2	x	x	1	25	59549-1	STRAP - muffler w/screw	x	x	1
4	59201-1A	CROSS PIECE	x	x	1	26	62691-1	BRACKET - muffler	x	x	1
5	80891	SCREW - hex hd, 12-24 x 7/8	x	x	1	27	83077-1	WASHER - lock, 1/4 I.E.T.	x	x	2
6	59195-2	LEG - right	x	x	1	29	62689	GASKET - 1-3/4" I.D. note 9	x	x	1
7	81053	NUT - 1/4 - 20	x	x	2	30	80911	SCREW - pan hd, 10-24 x 1/2	x	x	2
8	58729	FOOT - rubber	x	x	4		80681-3	SCREW - Hex hd 1/4-30 x 1/2	x	x	4
9	80572	SCREW - pan hd, 10-32 x 5/8	x	x	2	31	80882	SCREW - hex hd, 1/4-20 x 1/2	x	x	4
	80573	SCREW - Hex hd, 1/4 - 20 x 13/16	x	x	1	32	59594-A	CAP - drain & filler	x	x	2
		Older units use 80572				33	59910	GASKET	x	x	2
10	63355	GASKET	x	x	1	34	58619-4	HOUSING - pump	x	x	1
11	A-53633-A	HOUSING - impeller (see note 10) includes:	x	x	1	35	75959-1	FITTING - inlet nipple 1-1/2"	x	x	1
12	58956	BEARING - needle	x	x	1	36	62707-1	FITTING - discharge nipple 1-1/2"	x	x	1
13	58688-A	SEAL	x	x	1	37	62698	HANDLE - carrying	x	x	1
15	84091-1	WASHER (see note 11)	x	x	1	38	59275	GRIP - handle	x	x	1
17	62717	WASHER - sealing (see note 11)	x	x	5		62699	STRAINER not shown)	x	x	1
18	80953-2	SCREW - hex hd, 12-24 x 1-3/4	x	x	5	39	A-62984A	SKID	x	x	2
19	62695	SHIM - .010	x	x	as req'd			Includes: (each)			
	62696	SHIM - .015	x	x	as req'd	40	75057-A	SPRING	x	x	2
20	A-62694	SEAL ASSEMBLY - note 9	x	x	1	41	84004	WASHER - flat, 1/4	x	x	4
	A-54575	SEAL ASSEMBLY, "VITON" - note 9	x	x	1	42	83009	WASHER, lock - 1/4"	x	x	2
21	58718-4	IMPELLER	x	x	1						
22	62690	GASKET - 6-3/4" I.D. note 9	x	x	2						
	54183	GASKET - 6-3/4" I.D. note 9	x	x	1						

NOTE 9 For pumping Insecticides: Any XL pump may be used for insecticides when equipped with A-54575 seal, 54182 gasket, and 54183 gasket.

NOTE 10 One piece Impeller and Bearing Housing A-53633 Supersedes Impeller Housing 58661-2 and Bearing Housing A-59547

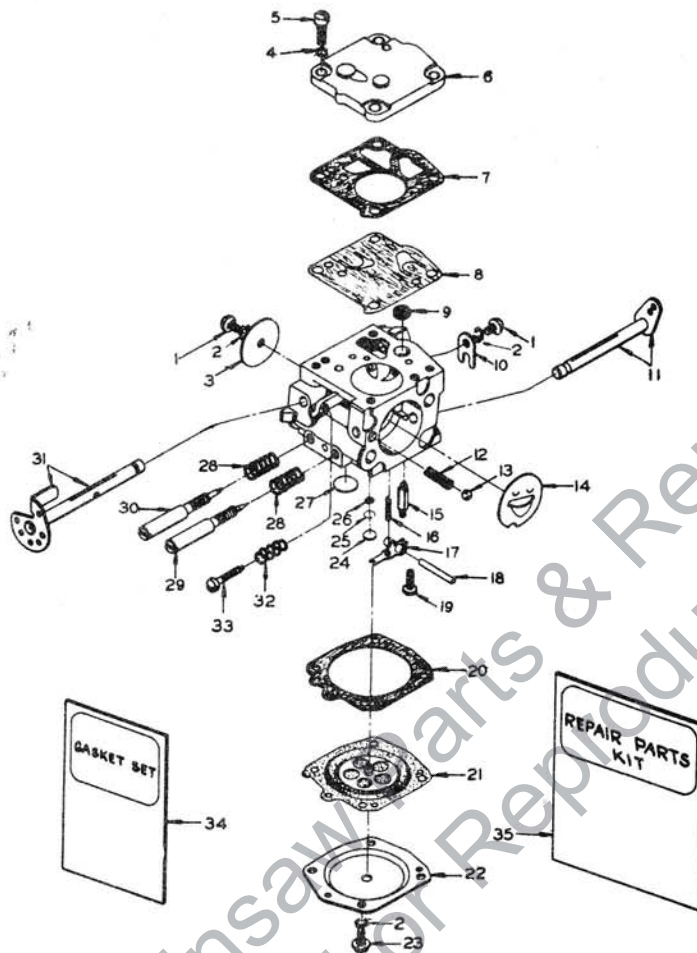
NOTE 11 For units without one piece Impeller and Bearing Housing (A-53633) use Slinger 62692, four 12-24 x 3/4 screws (80916) and four Sealing Washers (62717). See Note 10.

#### ACCESSORY

Available for prolonged operation - A-121772 Auxiliary Fuel Tank Kit complete with fastening parts, 2-3/4 qts. tank, and instructions. See your HOMELITE dealer.

Supersedes #A-58767-A, #A-58767-B

In units with governors •



Model — Tillotson HS-5C

All new parts listed are interchangeable with original parts when installed as noted.

Index No.	Part No.	Description	Qty. Req'd.	Index No.	Part No.	Description	Qty. Req'd.
1	*80264	SCREW - 4-40 x 3/16	2	19	*58992	SCREW - 4-40 x 5/16	1
2	83008-1	WASHER - #4	6	20	58978	GASKET - diaphragm	1
3	25050	THROTTLE SHUTTER	1	21	*58988	DIAPHRAGM - main	1
4	83024	WASHER - #6	4	22	58979	COVER - diaphragm	1
5	80275	SCREW - 6-32 x 3/8	4	23	80591	SCREW - 4-40 x 1/4	4
6	58975	COVER - pump	1	24	*58994	PLUG - Welch 3/16	1
7	58981	GASKET - fuel pump	1	25	57819	RING - retaining	1
8	*58980	DIAPHRAGM - fuel pump	1	26	59500	SCREEN - channel	1
9	*58974	SCREEN	1	27	*58991	PLUG - Welch 11/32	1
10	58982	CLIP - throttle shaft	1	28	*73075	SPRING - adjusting screw	2
11	58990	CHOKE SHAFT & LEVER	1	29	*58986	NEEDLE - main adjusting	1
12	73264	SPRING - choke friction	1	30	*58985	NEEDLE - idle adjusting	1
13	25527	BALL - choke friction	1	31	58989	THROTTLE SHAFT & LEVER	1
14	58984	SHUTTER - choke	1	32	*58973	SPRING - idle speed	1
15	*59717	† NEEDLE - inlet (See Note 1)	1	33	*58993	SCREW - idle stop	1
16	*55759	SPRING - inlet tension	1	34	*67866	GASKET SET	1
17	*59716	† LEVER - inlet control (See Note 1)	1	35	67869	REPAIR KIT	1
18	*58977	PIN - fulcrum	1				

\* Included in Repair Kit

† Note 1: New type (slotted) needle and lever must be installed together when replacing original type.

**HOMELITE-TERRY**  
**TEXTRON**