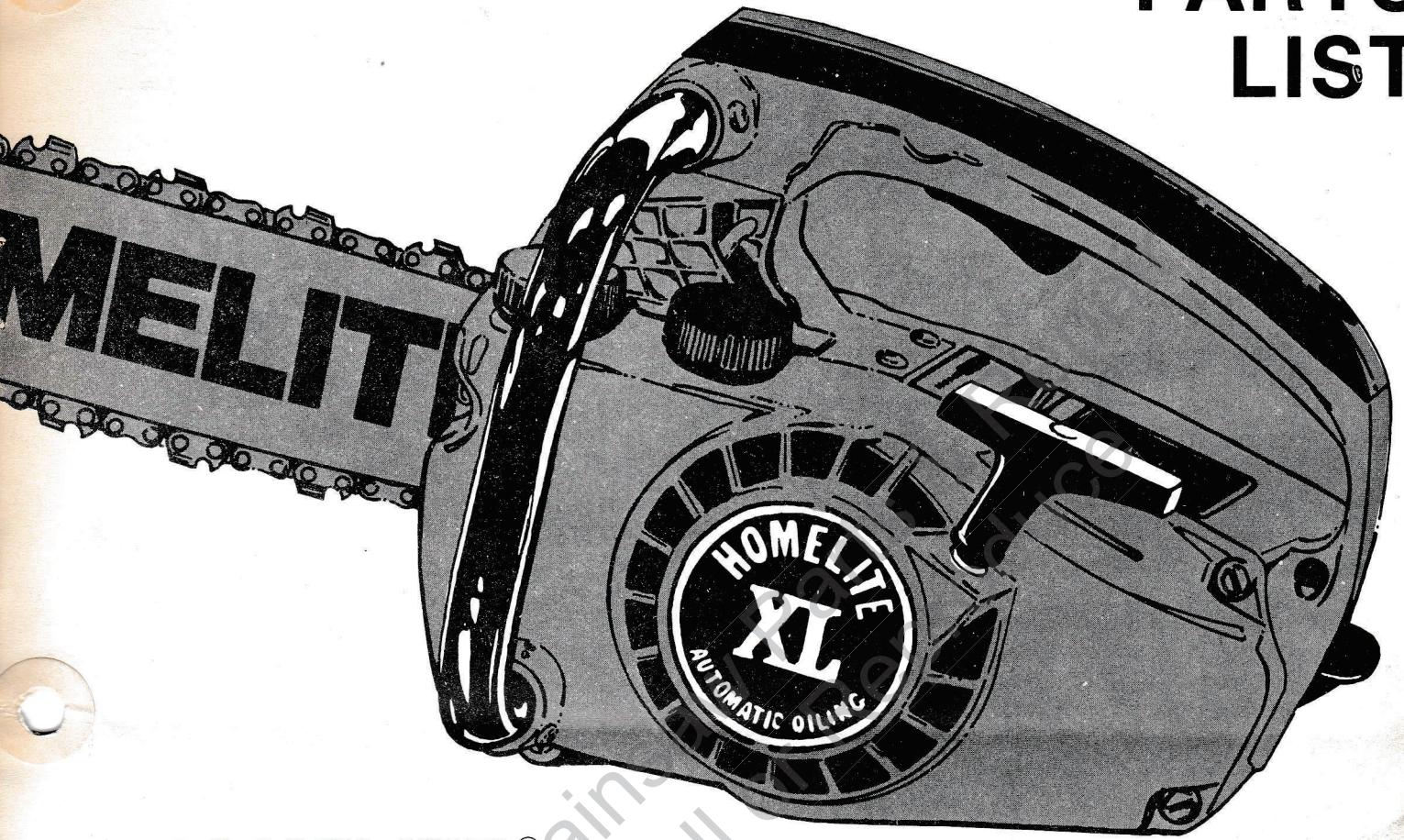


PARTS LIST



HOMELITE®

XL

automatic
oiling

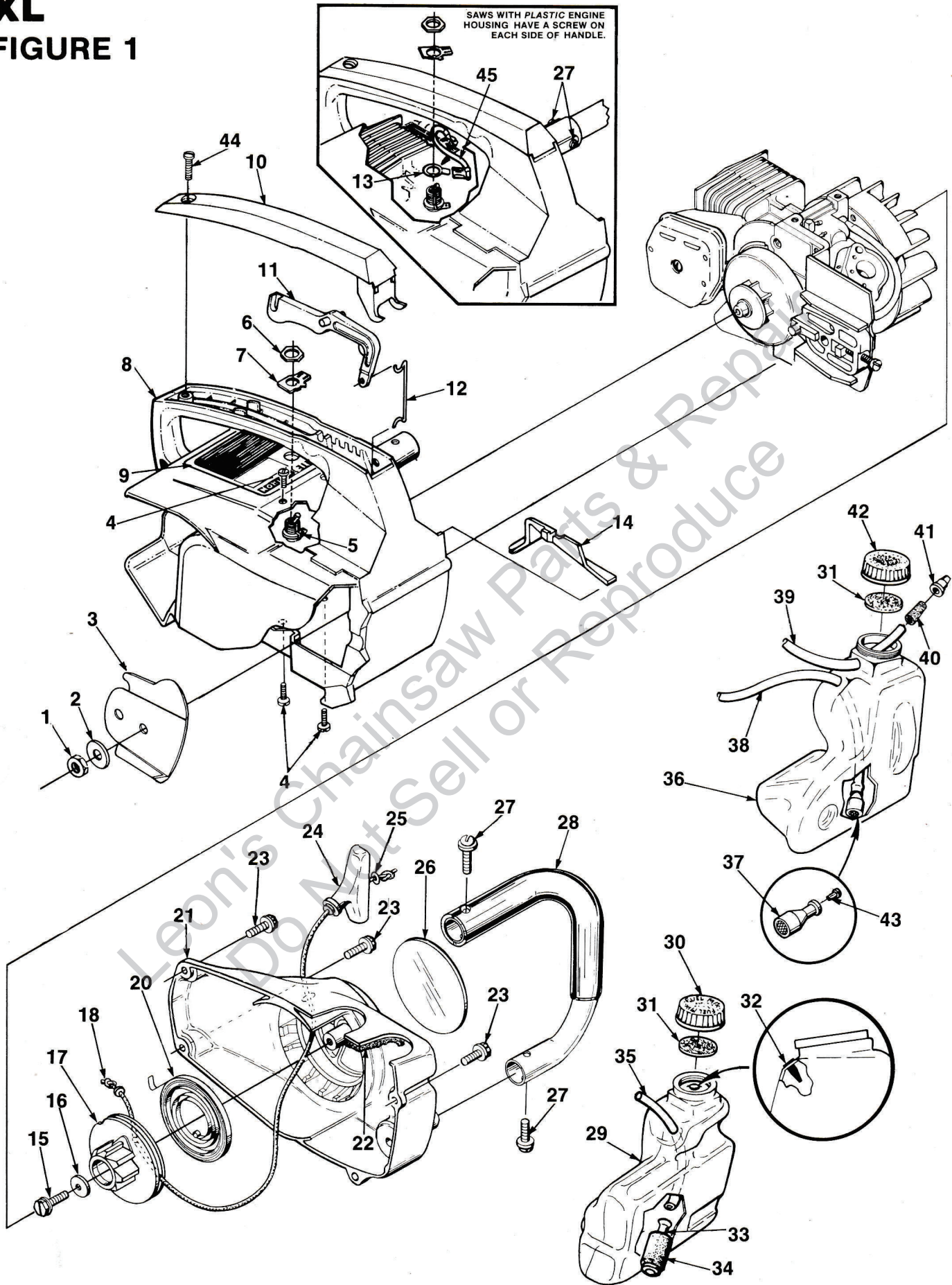
CHAIN SAWS

XL PLASTIC HOUSING
XL MAGNESIUM HOUSING

HOMELITE-TERRY **TEXTRON**

XL

FIGURE 1

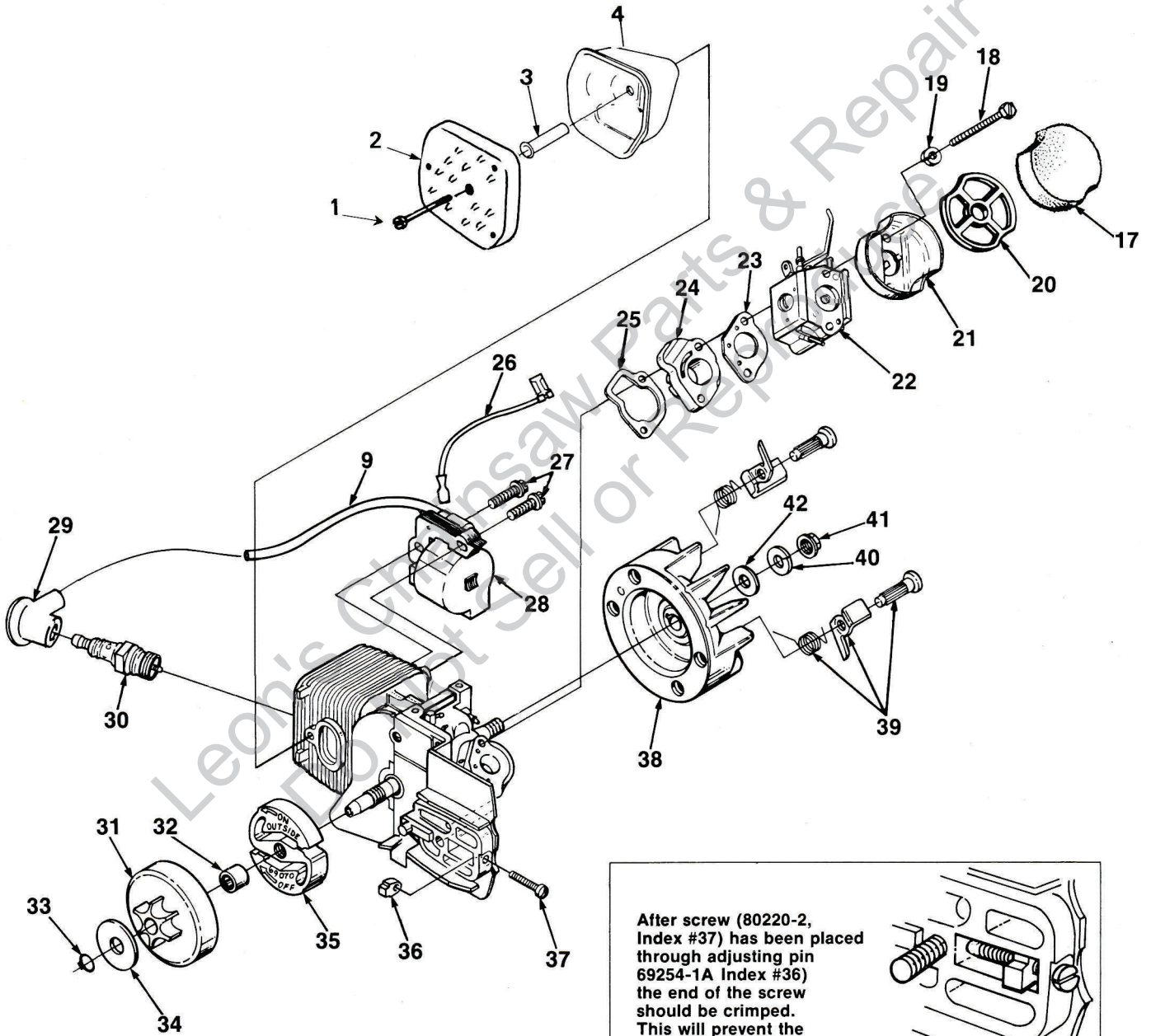
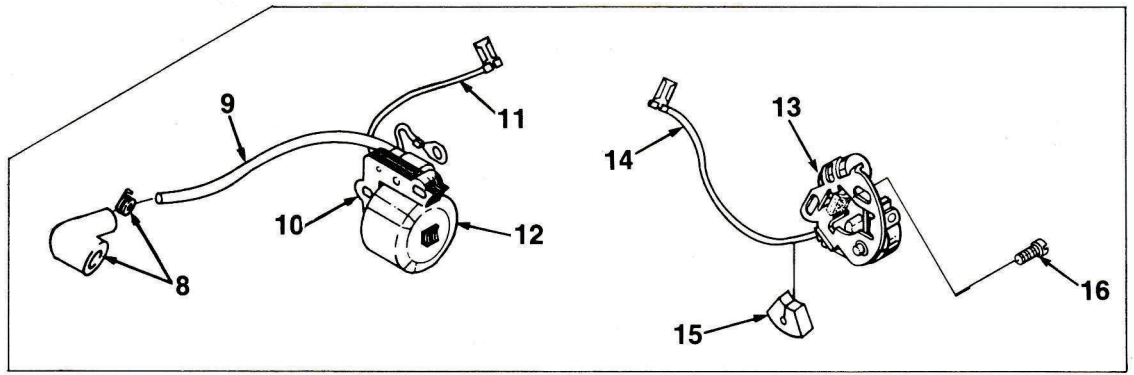


XL FIGURE 1

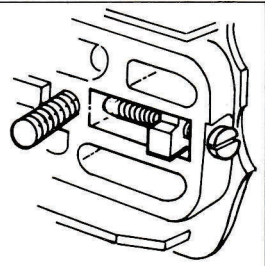
No.	Description	Part No.	XL - Mag. Hsg.		Qty.	No.	Description	Part No.	XL - Mag. Hsg.		Qty.
			XL	PI.					XL	PI.	
1	NUT- Guide bar 1/4-28	81065-2	x	x	1	32	VALVE- Check (Duck bill)	69451	x	x	1
2	WASHER- Flat	69309-A	x	x	1	33	FILTER- Fuel	A-69923	x	x	1
3	PLATE- Guide bar	69360	x	x	1		Includes:				
4	SCREW- Pan hd. 10-24 x 1/2	82393	x	x	4	34	ELEMENT- Felt	64083	x	x	1
5	SWITCH- Stop (Grounding)	A-63938	x		1	35	LINE- Fuel	70310-29	x	x	1
	SWITCH- Stop (Note 1)	93653		x		36	TANK- Oil	A-70898-T	x	x	1
	Includes:						Includes:				
6	NUT- Hex	72084-A1	x	x	1	37	FILTER- Oil	A-78889	x	x	1
7	PLATE- "On-Off"	70834	x	x	1	38	LINE- Oil (Note 4)	93112-31	x	x	1
8	HOUSING- Engine	A-69944-T	x		1	39	LINE- Pressure (Note 5)	A-69358-T	x	x	1
	HOUSING- Engine	A-95683-T		x	1		Includes:				
	Includes:					40	CONNECTOR- Oil	69659-1A	x	x	1
9	PLATE-Warning	78849	x	x	1	41	VALVE- Check (Duck bill)	69451	x	x	1
10	COVER- Handle	69872-A	x	x	1	42	CAP- Tank (Oil) (Black)				
11	TRIGGER- Front	69874-B	x	x	1		(Note 2)	A-70893-A	x	x	1
12	ROD- Throttle (Front)	69255-C	x	x	1		Includes:				
13	CONTACT- Ground	70845		x	1		GASKET- Filler cap				
14	COVER- Air filter	69263	x	x	1		(Note 3) (See #31)	94838-A	x	x	1
15	SCREW- Hex washer hd., 10-32 x 5/8	80704	x		1	43	PLUG	93703-A	x	x	1
	SCREW	94565	x		1	44	SCREW- Pan hd., 10 x 5/8	82312		x	1
16	WASHER- Flat	63606	x		1		SCREW- Pan washer hd., 10-32 x 5/8	82239	x		1
	WASHER- Flat	94062		x	1	45	LEAD- Ground switch	A-93717		x	1
17	PULLEY- Starter	69158	x	x	1						
18	ROPE- Starter #4, 30" long	69311-A	x	x	1						
20	SPRING- Rewind	69217	x	x	1						
21	HOUSING- Rewind starter	A-69540	x		1		NOTE 1- 93653 Switch does not include 72084-A1 Nut.				
	HOUSING- Rewind starter	A-94241		x	1		NOTE 2- Tanks with internal threads require A-70445 Fuel Cap and A-70446 Oil Cap. If internal threads in tank are worn, order new external threaded tank.				
22	FILTER- Fuel tank valve	69443	x	x	1		NOTE 3- Use 70826 Gasket in A-70893 and A-70894 external thread caps. Use 69585 Gasket for caps with internal threads.				
23	SCREW- Hex 10-32 x 5/8	80704	x		4		NOTE 5- Units with pressurized oil system use 70309-08 tubing for replacement of index #39.				
	SCREW	94565		x	4		NOTE 6- Units with Plastic Housings requires a screw on each side of handle. See inset.				
24	GRIP- Starter rope	70211	x	x	1						
25	WASHER- Flat	84025	x	x	1						
26	DECAL- XL	69887-T	x	x	1						
27	SCREW- Pan washer Hd., 10-32 x 5/8	82239	x		2						
	SCREW- Pan hd., #8 x 1/2 (Note 6)	82348		x	4						
28	HANDLE BAR	A-70219-1	x		1						
	HANDLE BAR	78554		x	1						
29	TANK- Fuel	A-70899	x	x	1						
	Includes:										
30	CAP- Tank fuel (Red) (Note 2)	A-70894-A	x	x	1						
	Includes:										
31	GASKET- Fuel filler cap (Note 3)	94838-A	x	x	1						

XL

FIGURE 2



After screw (80220-2, Index #37) has been placed through adjusting pin 69254-1A Index #36) the end of the screw should be crimped. This will prevent the screw from backing out.



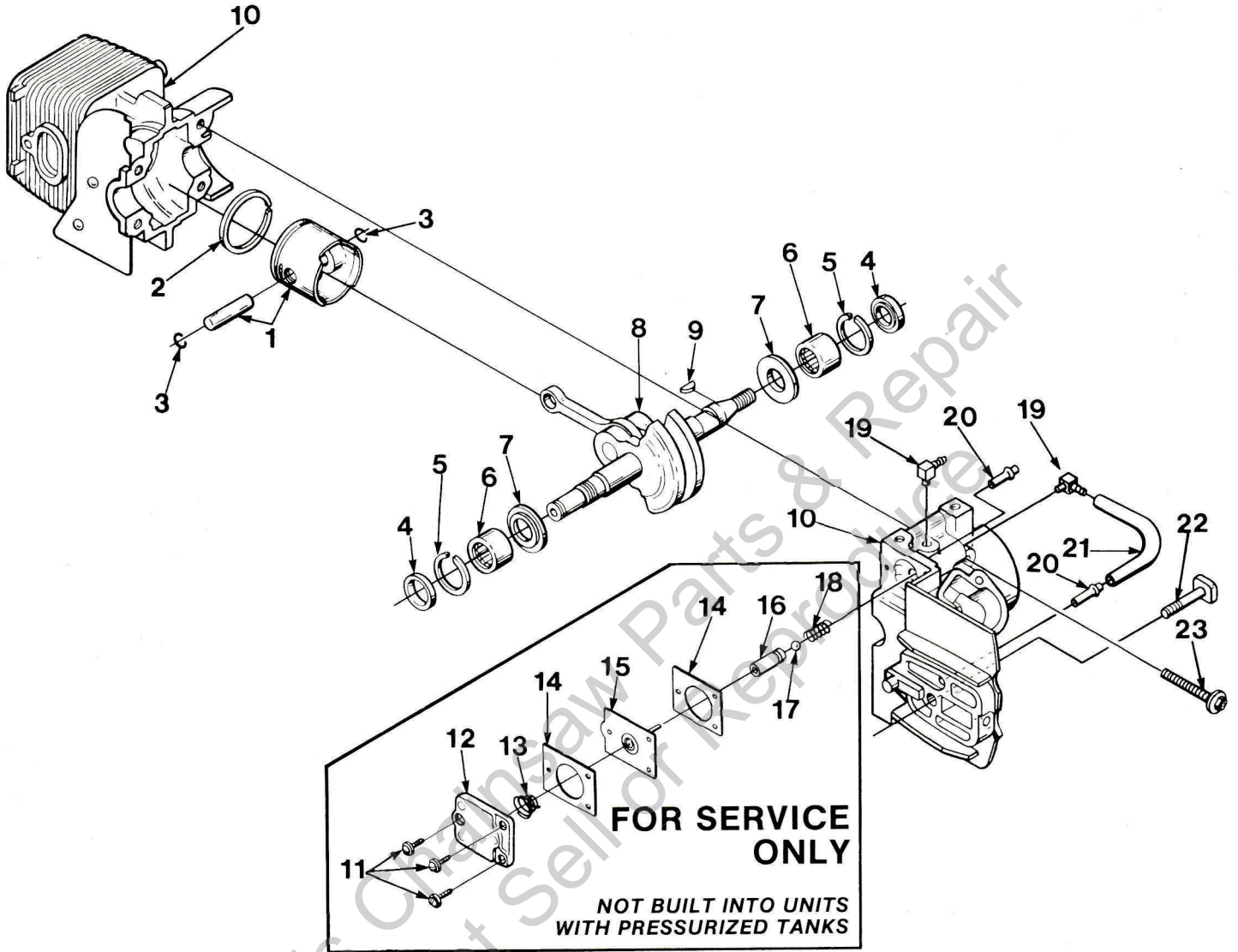
XL

FIGURE 2

No.	Description	Part No.	Qty.	No.	Description	Part No.	Qty.
1	MUFFLER	A-93686	1	30	SPARK PLUG-Champion® RDJ-7J	78276	1
	Includes:			31	SPROCKET & DRUM (Standard)	A-70221-T	1
2	CAP- Muffler	69097-1	1		(6 Tooth 91 & 91S chain)	A-69587-A	1
3	SCREW	82320	1		SPROCKET & DRUM (Early Models)		
4	SPACER	93656-A	1		(9 Tooth .25 Pitch 2 1/4")		
8	TERMINAL- Spark plug	A-33055	1		Includes:		
9	LEAD- High tension (Note 1)	69326	1	32	BEARING- Needle	68512	1
10	CORE- Coil (Point ignition)	69324	1	33	RING- Retaining- Clutch	93972	1
11	LEAD- Stop switch (Point ignition)	A-95051	1	34	WASHER- Thrust (clutch)	69138	1
12	COIL- Ignition (Point Ignition)	69323	1	35	CLUTCH- "S"	A-70351-T	1
	RETAINER- Coil			36	PIN- Adjusting (See Insert)	69254-1A	1
	(Not shown) (Point Ignition)	69325	1	37	SCREW- Adjusting (Fil hd. 8-32 x 1)	80220-2	1
13	POINT SET- Breaker (Point Ignition)	A-69336	1		(See Insert)		
	Includes:			38	ROTOR & STARTER PAWL		
14	LEAD- Electrical	70249	1		(Solid State) (FHELON)	A-94717	1
15	SEAL- Lead (Point Ignition)	69247	1		ROTOR & STARTER PAWL		
16	SCREW- Point Set (Point Ignition)	88026	2		(Point Ignition) (PHELON)	A-69297-A	1
17	FILTER- Air	69141	1		Includes:		
18	SCREW- Hex hd., 10-32 x 2 1/4	80481	2	39	KIT- Starter pawl (Note 4)	A-70285-A	1
19	WASHER- Lock, #10	83006-1	2	40	WASHER- Lock	83002	1
20	RETAINER- Air filter	69457	1	41	NUT- Rotor 5/16 - 24	81117	1
21	CUP- Air filter	69148	1	42	WASHER- Flat	84065	1
22	CARBURETOR- HDC-48A (Walbro)	A-94053	1				
	CARBURETOR HK-27A (Tillotson)	A-70551-A	1		NOTE 1- For Solid State Ignition cut wire to 6 1/2".		
23	GASKET- Carburetor	65016	1		NOTE 2- Use A-33055 for Service replacement.		
24	MANIFOLD- Intake	A-69373-A	1		NOTE 3- Retaining Ring, item 33 must never be reused once it has been removed. Item 33 included with both item 31 and 35.		
25	GASKET- Intake manifold	69143	1		NOTE 4- Replacement Starter Pawl Kit, item #39 includes an oversized pin. Paint, stamp or mark to identify oversized pin when installing. Oversize pin can be installed tightly only once. If oversize pin is removed, the entire rotor assembly must be replaced.		
26	LEAD- Ground (Solid State)	A-94721-T	1				
27	SCREW- Hex w/washer, 8-32 x 3/4	82248	2				
28	MODULE- Ignition (Solid state)	94711	1				
	Includes:						
	LEAD- High Tension (See #9)	69326	1				
29	TERMINAL- Spark plug						
	(Solid state) (Note 2)		1				

XL

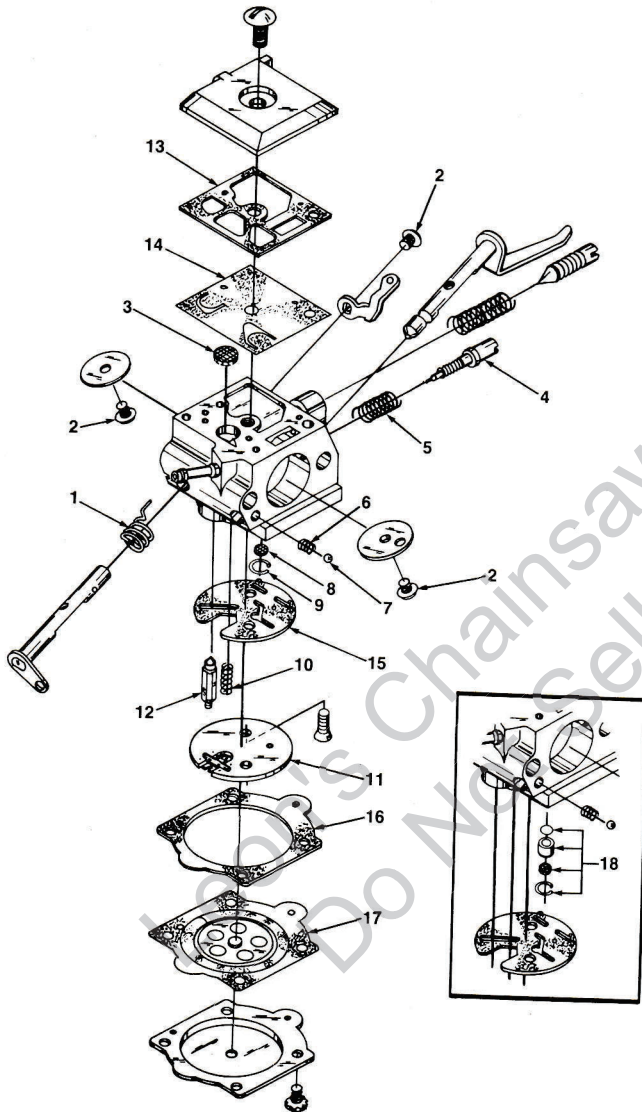
FIGURE 3



No.	Description	Part No.	Qty.	No.	Description	Part No.	Qty.
1	PISTON & PIN Includes:	A-69393-T	1	12	COVER- Oil pump	69224-1C	1
2	PISTON RING	69312	1	13	SPRING- Oil pump	69447	1
3	RING- Piston pin retaining	65261	2	14	GASKET- Oil pump	69244-1	2
4	SEAL	94638	2	15	PLUNGER- Oil pump	A-12356-B	1
5	SPACER- Seal	69407	2	16	BODY- Oil pump	69343-1	1
6	BEARING- Needle	12530	2	17	BALL- Check valve	60051	1
	BEARING- Needle (Alternate)	68513	2	18	SPRING- Check valve	68570	1
7	WASHER- Thrust	69093-A	2	19	FITTING- Oil line	70204	2
8	CRANKSHAFT- (Solid State)	A-94712	1	20	FITTING- Tube	69833	2
	CRANKSHAFT- (Point Ignition)	A-78373	1	21	LINE- Oil	70161	1
9	KEY- Magneto (See above)	69250	1	22	BOLT- Guide bar	69195	1
10	CYLINDER & CRANKCASE (Solid State)	A-95071	1	23	SCREW- Sems hex hd. 8-32 x 1	88044	4
	CYLINDER & CRANKCASE (Point Ignition)	A-69421-B	1				
	Includes:						
11	SCREW- Pan hd., 6-32 x 1/2	80630	3				

CARBURETOR HDC-48A

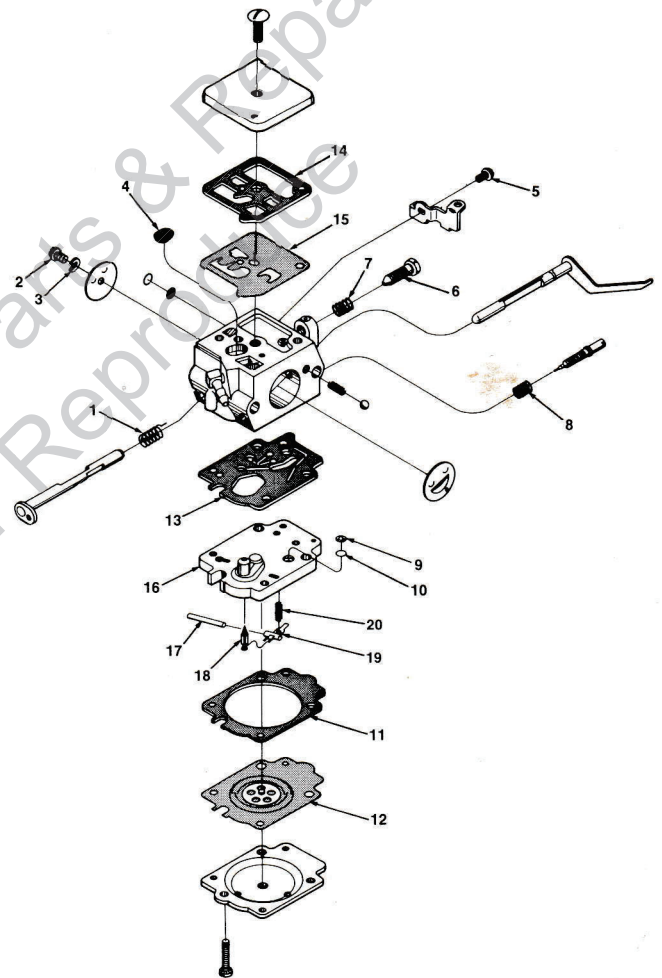
A-94053



- 94702 Repair Kit (Includes 1-17)
- 70655 Gasket/Diaphragm Set (Includes 13-17)
- 93910 Check Valve Repair Kit (18)
- 94057 Circuit Plate-High Altitude .029 (Not shown)
- 64229 Inlet Needle (#12)

CARBURETOR HK-27A

A-70551-A



- 94810 Repair Kit (Includes 1-15)
- 70094 Gasket/Diaphragm Set (Includes 11-15)
- 94817 Module #16 (Includes 17-20)
- 70589 High Altitude Kit (Not shown)

ACCESSORIES

GASKET- Oil pump body (Repair)	69596
KIT- Repair, (Sprocket nose bar)	A-70239-B
TUBING- Rubber (10 ft. length) FUEL	70310-99
TUBING- Rubber (10 ft. length) OIL	93112-99
SAFE•T•TIP	A-70776-T
Includes:	
SCREW- (Special)	93695
GREASE- Multi-use	17193
(Sprocket bearing-PT Guide Bar)	
KIT- Hand guard	A-70796-T
Includes:	
WASHER- Belleville (2)	70728
SPACER (1)	70748
SCREW- 10-32 x 5/8 z91z0	80572
SCREW (1)	82312
CARRYING CASE	94215
STARTING ROPE- 100 ft. reel	#4

TOOLS

SILASTIC- (Crankcase sealing)	24823
PLIERS- TRU-ARC	
(Sprocket retaining ring)	17198
PULLER- Magneto rotor	A-24747-A
Includes:	
BOLT- 5/16-18 x 1 3/4 (1)	80288
NUT- Hex 5/16-18 (2)	81196
WRENCH- Hex soc., 5/32	
(For 10-24 screws)	22126
WRENCH- Hex soc., 9/64	
(for socket head connecting rod screws)	23528
WRENCH- Spanner (clutch)	A-93791
Includes:	
PIN- Clutch spanner (2)	23717-A
TOOL- Carburetor check valve installation	
(Walbro Only)	24972

1082YZ

HOMELITE-TERRY **TEXTRON**

Homelite-Terry Division of Textron Canada Limited