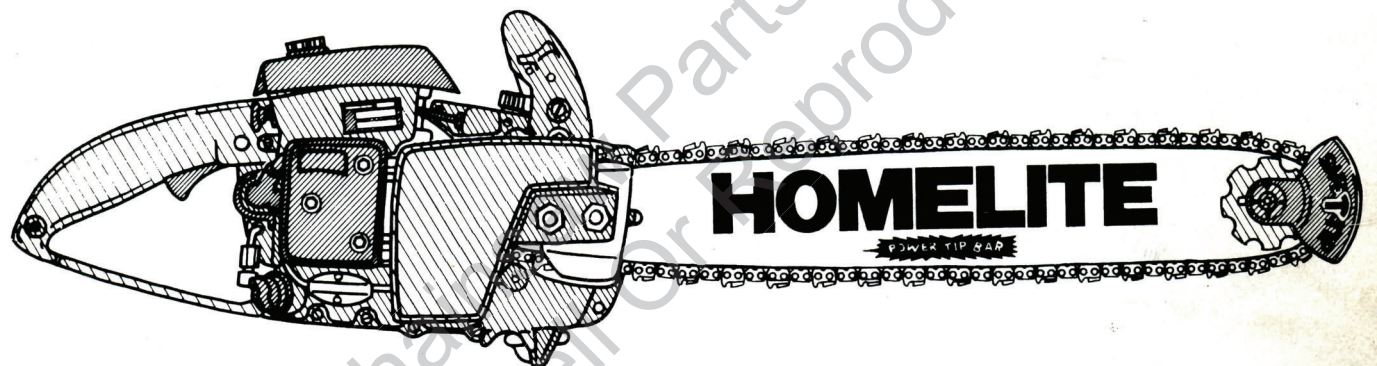
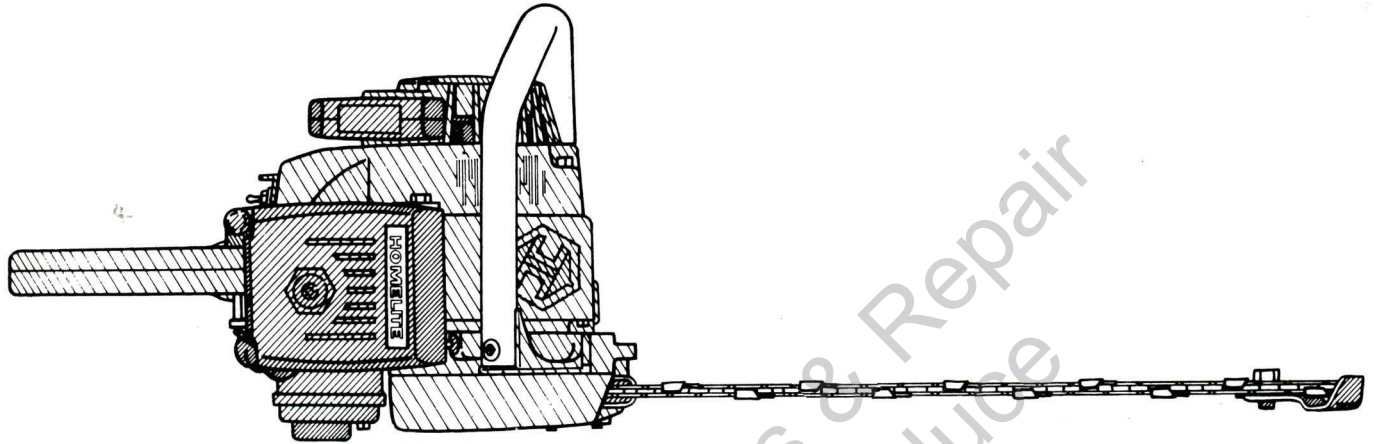


# ILLUSTRATED PARTS LIST

PART NO. 24228-T

PRICE .35¢

## HOMELITE®



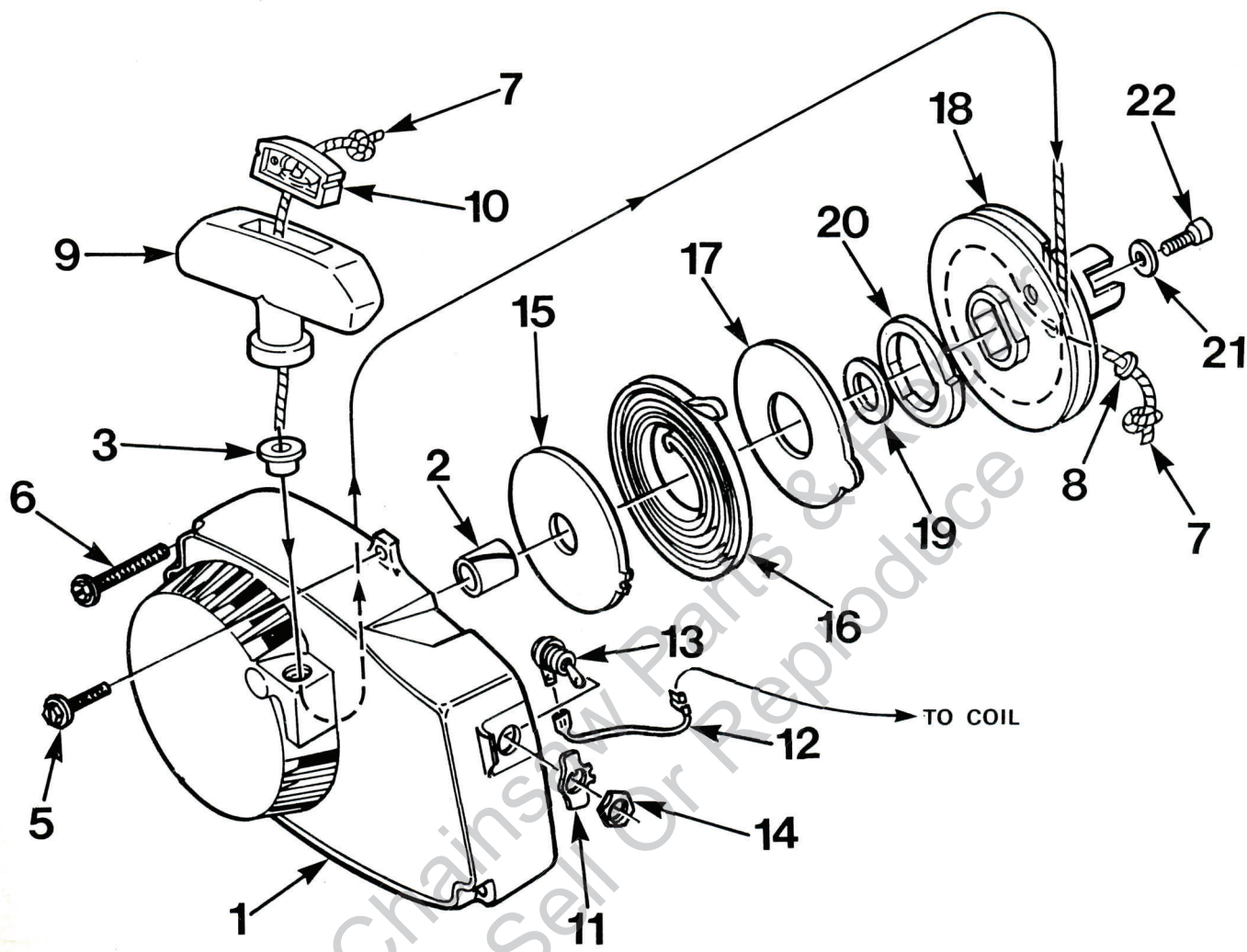
# XL<sup>®</sup>-12 WITH PYRAMID REED SYSTEM & XL-A0 CHAIN SAWS

**HOMELITE-TERRY**  
**TEXTRON**

Homelite-Terry  
Division of Textron Canada Limited

# XL-12 & XL-AO

Figure 1

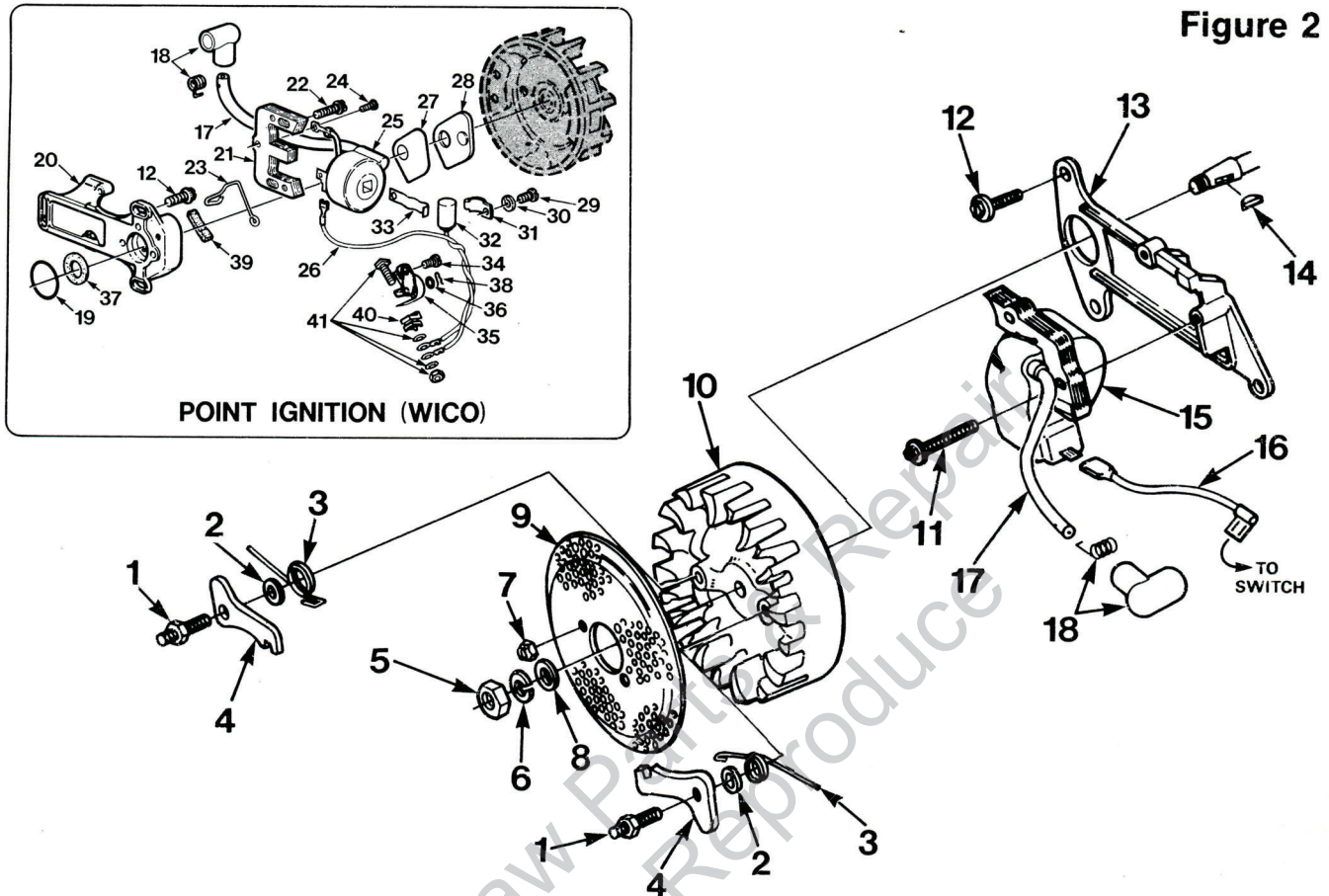


No.	Description	Part No.	XL-12	XL-AO	Qty.
1	HOUSING- Fan Includes:	A-64518-T	x	x	1
2	BUSHING- Starter	64443	x	x	1
3	BUSHING- Rope	67177	x	x	1
5	SCREW- Hex, 12-24 x 5/8	80676	x	x	4
6	SCREW- Hex, 12-24 x 1-11/16	58963	x	x	3
7	ROPE- Starter 48" Long #5	58806	x	x	1
8	WASHER- Flat	78093	x	x	1
9	GRIP- Starter rope Includes:	A-69962-B	x	x	1
10	INSERT	70018-A	x	x	1
11	PLATE- "ON-OFF"	70839	x	x	1
12	LEAD- Ground (Solid State)	A-94850-T	x	x	1
12	LEAD- Ground (Point Ignition)	A-59031	x	x	1

No.	Description	Part No.	XL-12	XL-AO	Qty.
13	SWITCH Includes:	A-57650-3A	x	x	1
14	NUT	72084-A1	x	x	1
15	SHIELD- Spring (Inner)	59638-A	x	x	1
16	SPRING- Recoil <i>94842</i>	<del>58764-A</del>	x	x	1
17	SHIELD- Spring (Outer)	59639-A	x	x	1
18	PULLEY- Starter Includes:	A-64446	x	x	1
19	BUSHING- Spring	64400	x	x	1
20	LOCK- Spring	64049-B	x	x	1
21	WASHER- Retaining	58763	x	x	1
22	SCREW- Hex, 10-32 x 1/2	80648	x	x	1

# XL-12 & XL-AO

Figure 2



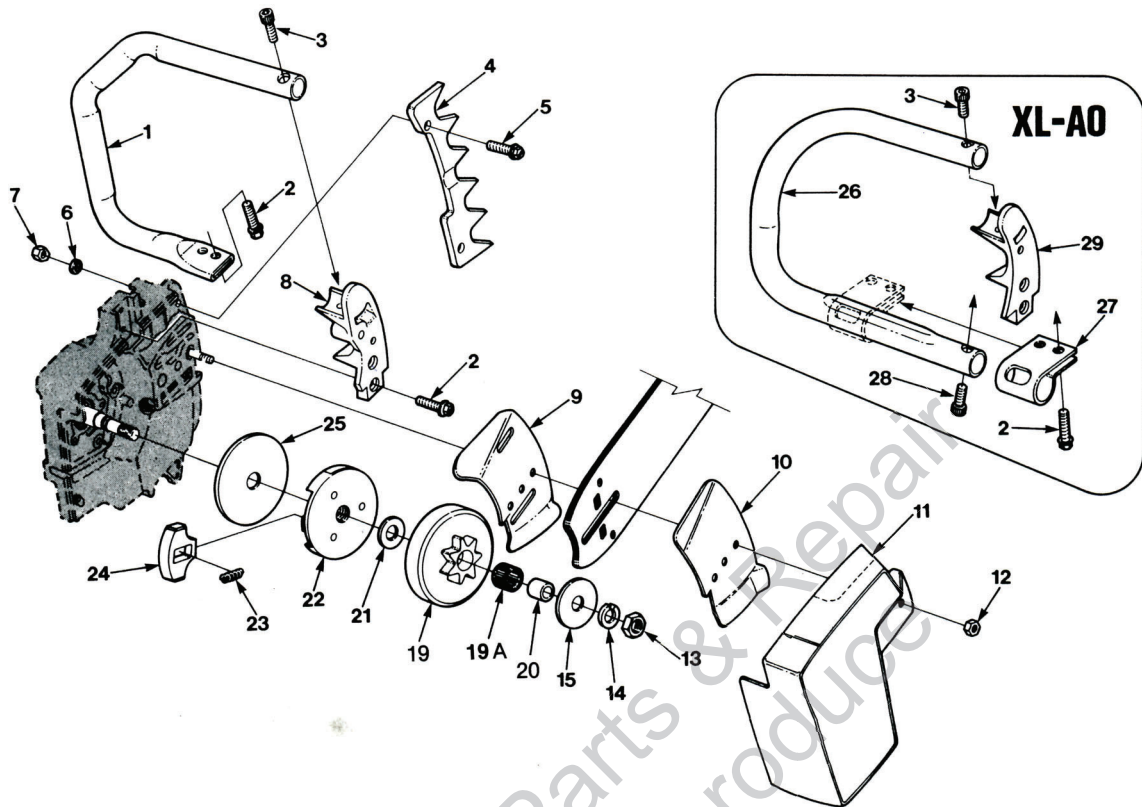
No.	Description	Part No.	XL-12	XL-AO	Qty.	No.	Description	Part No.	XL-12	XL-AO	Qty.
1	STUD- Shoulder	58757-E	x	x	2	25	COIL- With lead (Point Ignition)	(W) 93097	x	x	1
2	WASHER- Lock	70901	x	x	2	26	LEAD	93095	x	x	1
3	SPRING- Starter pawl	65375-2	x	x	2	27	GASKET- Breaker box cover (Point Ignition)	(W) 58810	x	x	1
4	PAWL- Starter	58756	x	x	2	28	COVER- Breaker box (Point Ignition)	(W) 58811	x	x	1
5	NUT- Hex (5/16-24)	81117	x	x	1	29	SCREW- Hd. (8-32 x 5/16) (Point Ignition)	(W) 30261	x	x	1
6	WASHER- Lock (5/16)	83002	x	x	1	30	WASHER- Point set (Point Ignition)	83060	x	x	2
7	NUT- Center lock (#10-32)	81206	x	x	2	31	CLAMP- Condenser (Point Ignition)	(W) 59622	x	x	1
8	WASHER- Flat (5/16)	84056	x	x	1	32	CONDENSER (Point Ignition)	(W) 63250-A	x	x	1
9	SCREEN- Starter	58765	x	x	1	33	CLIP- Coil retaining (Point Ignition)	(W) 63726	x	x	1
10	ROTOR- Magneto (W)	70639	x	x	1	34	SCREW- Contact plate (Point Ignition)	(W) 76421	x	x	1
11	SCREW- Hex washer hd. (8-32 x 3/4)	82248	x	x	2	35	POINTS- Breaker (Point Ignition)	(W) A-93100	x	x	1
12	SCREW- Hex hd. (12-24 x 5/8)	80676	x	x	3		Includes:				
13	PLATE- Ignition coil mtg. (Solid State)	94326-1	x	x	1	36	WASHER- Plain	(W) 28028	x	x	A/R
14	KEY- Rotor	75078	x	x	1	37	SEAL- Felt	(W) 59760	x	x	1
15	MODULE & CORE (Solid State)	94605	x	x	1	38	CLIP	(W) 28008	x	x	1
16	LEAD- Ground (Solid State)	A-94850-T	x	x	1	39	CAM- Felt		x	x	1
	LEAD- Ground (Point Ignition)	A-59031	x	x	1	40	BLOCK- Terminal (Point Ignition)	(W) A-68162	x	x	1
17	LEAD- High tension	58966	x	x	1		Includes:				
18	TERMINAL- High tension	A-33055	x	x	1	41	NUT- Connection stud	(W) 93099	x	x	1
19	GASKET- Stator (Point Ignition)	59538	x	x	1						
20	BOX- Breaker (Point Ignition)	(W) A-94556	x	x	1						
	Includes:										
21	CORE	93098	x	x	1						
22	SCREW- Hex washer hd. (8-32 x 3/4)	82248	x	x	2						
23	CLIP- Breaker box cover (Point Ignition)	76413	x	x	1						
24	SCREW- Terminal (Point Ignition)	(W) 64090	x	x	1						

(W) Wico (A/R) As Required

ALWAYS FURNISH MODEL AND SERIAL NUMBER WHEN ORDERING PARTS.

# XL-12 & XL-AO

Figure 3



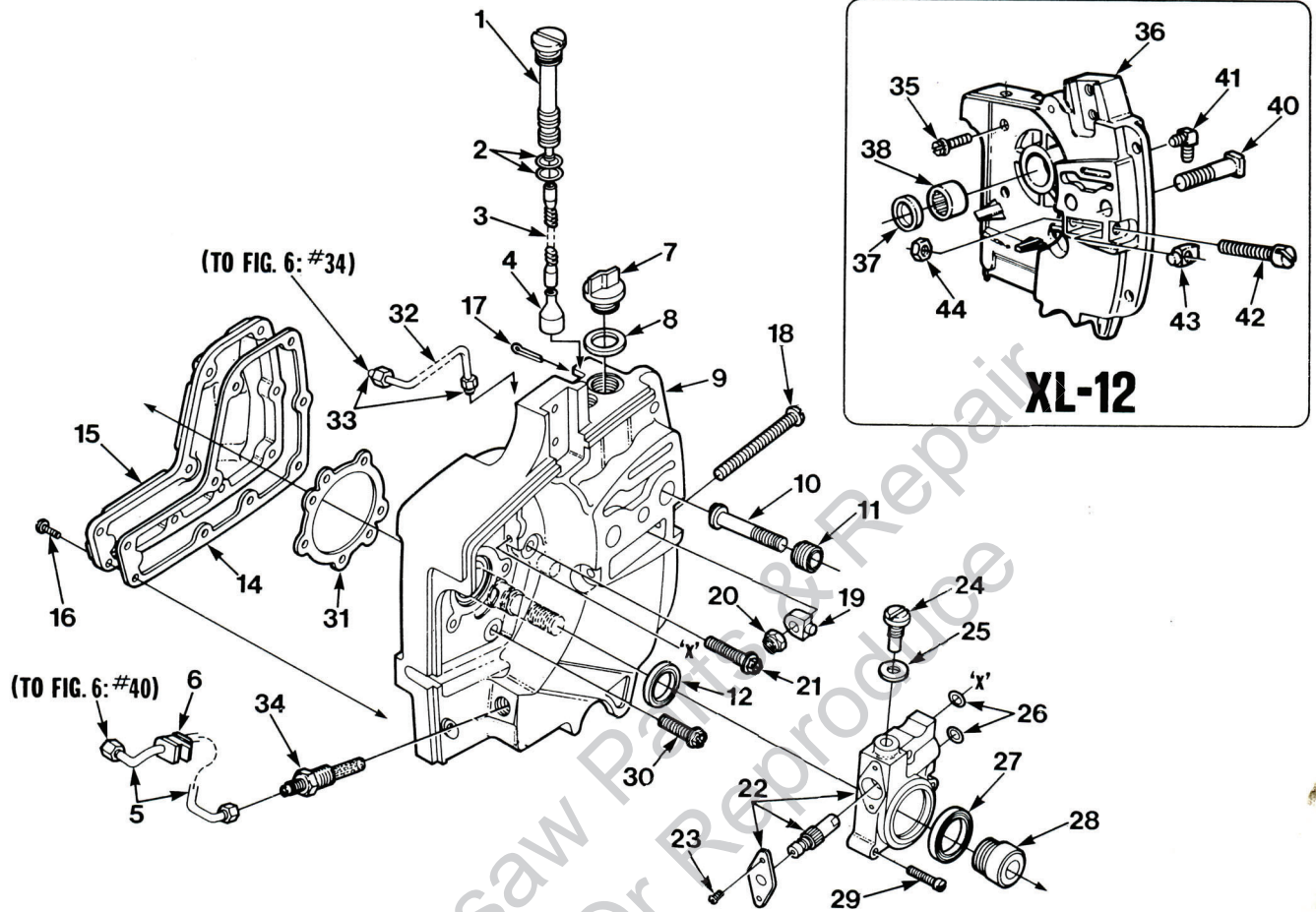
No.	Description	Part No.	XL-12	XL-AO	Qty.	No.	Description	Part No.	XL-12	XL-AO	Qty.
1	HANDLE BAR- Flush cut	A-58793-3T	x		1	15	WASHER- Thrust (Outer)	65064	x	x	1
2	SCREW- 12-24 x 3/4	80867	x	x	4	19	SPROCKET & DRUM 3/8" pitch, 7 tooth (Note 1)	A-78910	x	x	1
3	SCREW- Socket hd. 1/4-20 x 1	80428	x	x	1		Includes				
4	BUMPER KIT- Spiked (Accessory)	A-59043	x	x	1	19A	BEARING - Needle,	72311	x	x	1
5	SCREW- Hex, 12-24 x 3/4	80867	x	x	2	20	RACE - Inner	55584	x	x	1
6	WASHER- Lock, #12	70901	x	x	2	21	WASHER- Thrust (Inner)	58833	x	x	1
7	NUT- Hex, 12-24	81068	x	x	2	22	PLATE- Clutch	65760-1B	x	x	1
8	BRACKET- Handle bar KIT- Guide bar plate	59246-5 A-70618	x	x	1	23	SPRING- Clutch	67053	x	x	3
	Includes:					24	SHOE- Clutch	69461	x	x	3
9	PLATE- Guide bar (Inner)	70399	x	x	1	25	COVER- Clutch	95054	x	x	1
10	PLATE- Guide bar (Outer)	70400	x	x	1	26	HANDLE BAR- Flush cut	A-63909-4T		x	1
11	COVER- Drivecase	58750-16	x	x	1	27	CLAMP	63291-A		x	1
12	NUT- Hex, 3/8-16	81089-2	x	x	2	28	SCREW- Soc. hd. 1/4-20	80428-1		x	1
13	NUT- Lock 3/8-24	81124	x	x	1	29	BRACKET- Handle bar (Note 1)	59651-10		x	1
14	WASHER- Lock 3/8	83018	x	x	1						

NOTE 1: 64124 Bearing and 65746B Inner Race are alternative for part 19A and part 20.

# XL-12 & XL-AO

Figure 4

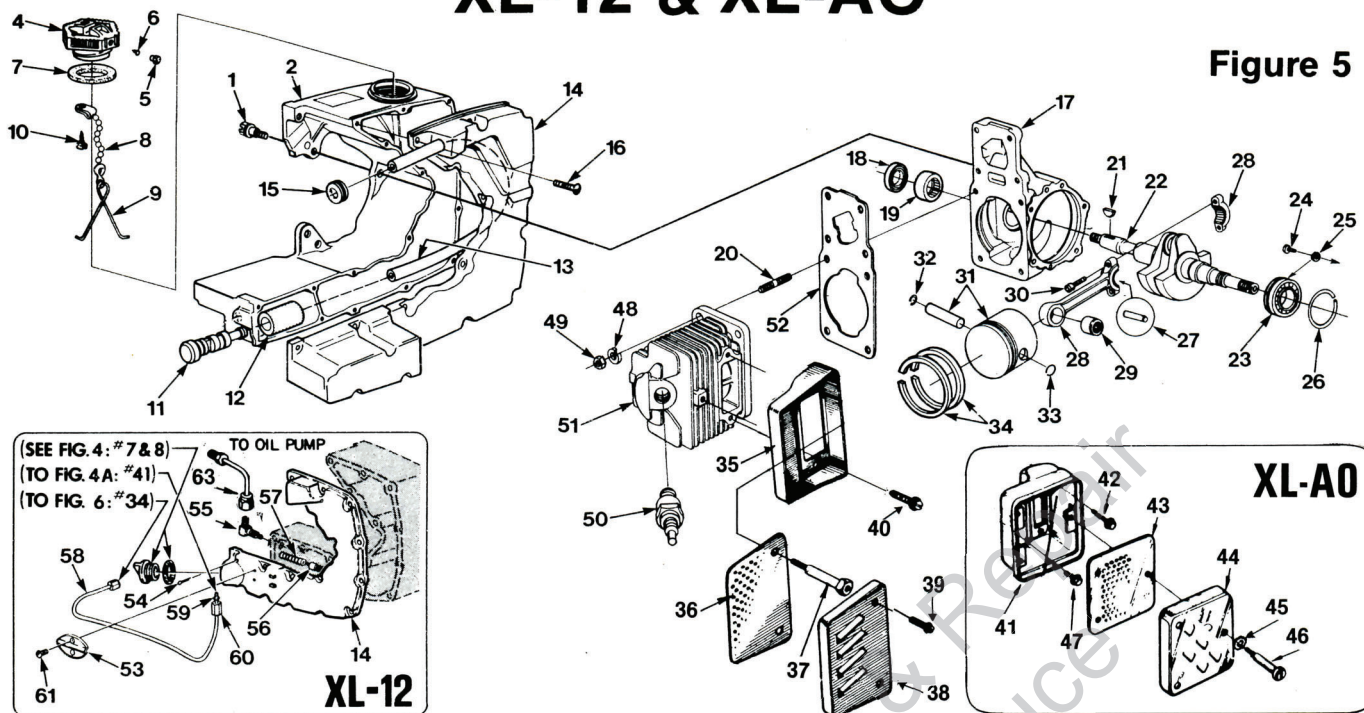
Figure 4A



No.	Description	Part No.	XL-12	XL-AO	No.	Description	Part No.	XL-12	XL-AO
	FILTER- Oil Assembly	A-69371	x	1	22	PUMP- Automatic oil	A-59809-B	x	1
	Includes:					Includes:			
1	TUBE- Oil line	59325-2	x	1	23	SCREW- Pan, 4-40 x 1/4	80919	x	2
2	"O" RING	59765	x	2	24	SCREW- Cam	64102-A	x	1
3	TUBING- Rubber	70309-09	x	1	25	GASKET	59736	x	1
4	FILTER- Oil	A-68593	x	1	26	"O" RING	59074	x	2
5	LINE- Oil	A-59819	x	1	27	SEAL- Felt	59926	x	1
	Includes:				28	WORM	59675	x	1
6	GROMMET	59794	x	1	29	SCREW - Pan, 8-32 x 3/4	80567	x	3
7	CAP- Filler oil	A-78369	x	1	30	SCREW - Hex, 12-24 x 9/16	80899	x	4
	Includes:				31	GASKET - Crankcase	63355	x	1
8	GASKET	56607	x	1	32	LINE- Oil (Discharge)	A-59806	x	1
9	DRIVECASE	A-59930-FT	x	1		Includes:			
	Includes:				33	SLEEVE- Compression	25301	x	2
10	STUD- Guide bar, 3/8"	67475	x	2	34	FILTER- Oil (manual oil)	A-59804-A	x	1
11	INSERT- Threaded	67476	x	2	35	SCREW- (12-24 x 9/16)	80899	x	5
12	SEAL	58308-B	x	1	36	DRIVECASE	A-58925-CT	x	1
14	GASKET- Oil reservoir	59710	x	1		Includes:			
15	COVER - Oil reservoir	59649-9	x	1	37	SEAL	12282-A	x	1
16	SCREW - Rd., no. 8 x 5/8	82339	x	9	38	BEARING- Needle	58956	x	1
17	PIN- Cotter	86301	x	1	40	BOLT- Guide bar	67485	x	2
18	SCREW- Guide bar adjusting	63225	x	1	41	FITTING- Tube elbow			
19	PIN- Bar adjusting	93039	x	1		90° connection	56707	x	1
20	NUT- Lock, 1/4-20	81204	x	1	42	SCREW- Guide bar adjusting	63225	x	1
21	SCREW- Hex, 12-24 x 1	80864	x	1	43	PIN- Guide bar adjusting	93039	x	1
					44	NUT- Gripco	81204	x	1

# XL-12 & XL-AO

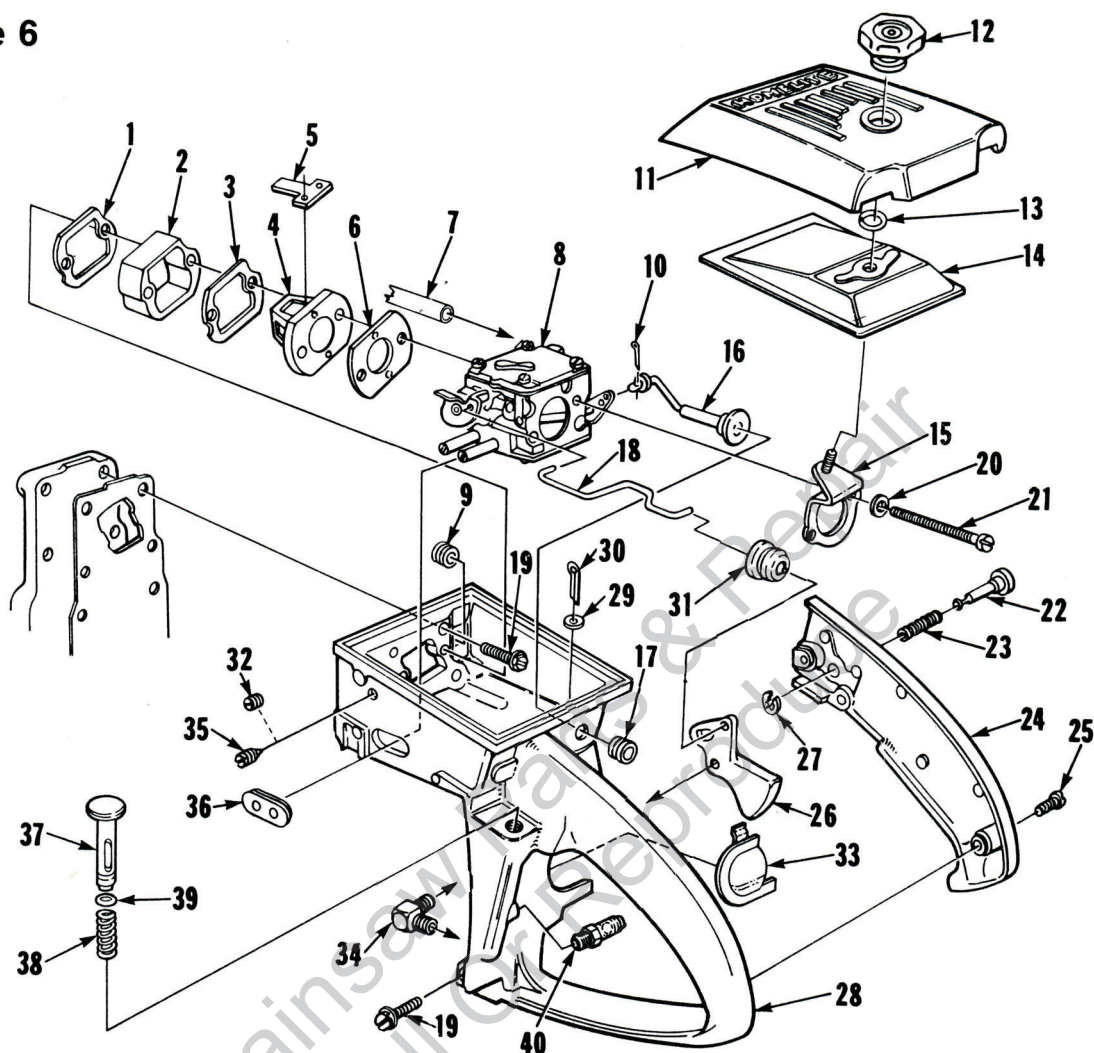
Figure 5



No.	Description	Part No.	XL-12	XL-AO	Qty.	No.	Description	Part No.	XL-12	XL-AO	Qty.
1	SCREW- Shoulder	63407	x	x	3	33	RING- Retaining	64813	x	x	1
2	TANK- Fuel	A-68396-T	x	x	1	34	PISTON RING	58877	x		2
	Includes:						PISTON RING	59436-1A	x		2
4	CAP- Fuel filler	A-69500-A	x	x	1		XL-12 MUFFLER - Assembly	A-59052-A	x		1
	Includes:						Includes:				
5	FILTER- Fuel cap	69454	x	x	1	35	Muffler Body	A-59049-1	x		1
6	VALVE- Check	69451	x	x	1	36	Baffle	59050	x		1
7	GASKET- Fuel filler cap	69501	x	x	1	37	Stud	59065-B	x		2
8	CHAIN- Bead	69502	x	x	1	38	Muffler Cap	A-63246-1	x		1
9	RETAINER	69503	x	x	1	39	Screw	80825	x		2
10	SCREW- Pan hd., #6 x 1/4	82256	x	x	1	40	Screw	80821	x		1
11	FILTER- Fuel	A-69923	x	x	1		XL-AO MUFFLER - Assembly	A-78512		x	1
	Includes:						Includes:				
12	FILTER- Felt	64083	x	x	1	41	Muffler Body	A-68460-1A	x		1
13	LINE- Fuel	94772-37	x	x	1	42	Screw	78156	x		2
14	COVER- Fuel tank	78531-3	x		1	43	Baffle	68678	x		1
	COVER- Fuel tank	78530-3	x		1	44	Muffler Cap	69374-1T	x		1
15	GROMMET	68046	x	x	1	45	Washer	78312	x		3
16	SCREW- Rd., #8 x 5/8	82339	x	x	16	46	Screw Shoulder	68480	x		3
17	CRANKCASE	A-63619-T	x	x	1	47	Screw	78157	x		1
	Includes item 62 and					48	WASHER- Lock, 1/4	83009	x	x	4
18	SEAL	12282-A	x	x	1	49	NUT- 1/4-28	81065-2	x	x	4
19	BEARING	58956	x	x	1	50	SPARK PLUG RCJ 8	78271	x		1
20	STUD	69438	x	x	4		SPARK PLUG RCJ 6	78270	x		1
21	KEY- Woodruff	75078	x	x	1	51	CYLINDER	A-78779	x		1
22	CRANKSHAFT	63497-1	x		1		CYLINDER	A-78413		x	1
	CRANKSHAFT	63498-1		x	1		Includes:				
23	BEARING- Needle thrust	58726	x		2	52	GASKET- Cylinder	59771	x	x	1
	BEARING- Ball	58190-S		x	1	53	PLATE- Retaining	59016	x		1
24	SCREW- Torx	70306	x		2	54	PIN- Cotter	86301	x		1
25	WASHER- Lock	59705	x		2	55	VALVE- Inlet check	A-59010	x		1
26	RACE- Needle thrust	58725	x		2		Includes:				
	RING- Retaining	58319-A		x	1		BALL- (Not shown)	25527	x		1
27	ROLLER- Set (31)	A-69054	x	x	1	56	FILTER- Oil	A-59009-A	x		1
28	ROD- Connecting	A-63477-B	x	x	1	57	LINE- Pick up	59000	x		1
	Includes:					58	LINE- Oil	A-59012	x		1
29	BEARING	93369	x	x	1		Includes:				
30	SCREW- Cap soc. hd.	69919	x	x	2	59	SLEEVE- Compression (1/8)	25301	x		2
31	PISTON & PIN	A-78494	x		1	60	NUT- Compression (5/16-24)	25302	x		1
	PISTON & PIN	A-78496		x	1	61	SCREW- Pan hd. (4-40 x 1/4)	80919	x		2
	Includes:					62	PIN - Dowel	63621	x	x	1
32	RING- Retaining	75120	x	x	1	63	OIL LINE	A-94946	x		1

# XL-12 & XL-AO

Figure 6



No.	Description	Part No.	XL-12	XL-AO	Qty.	No.	Description	Part No.	XL-12	XL-AO	Qty.
1	GASKET- Spacer	59274	x	x	1	23	SPRING- Throttle latch	58405	x	x	1
2	SPACER	59718	x	x	1	24	COVER- Throttle handle	A-59213-1	x	x	1
3	RETAINER- Reed valve	63260-A	x	x	1		Includes:				
4	SEAT- Reed valve	63253	x	x	1		BUSHING- Pin	59064	x	x	1
5	VALVE- Reed	59678-B	x	x	4	25	SCREW- Pan, 8-32 x 1/2	80560	x	x	2
6	GASKET- Carburetor	59722	x	x	1	26	TRIGGER- Throttle	58859	x	x	1
7	LINE- Fuel (Note 1)	94772-37	x	x	1	27	RING- Retaining	58409	x	x	1
8	CARBURETOR	A-68407-AT	x	x	1	28	THROTTLE HANDLE	A-93926	x	x	1
9	GROMMET	68279	x	x	1		Includes:				
10	COTTER PIN	86324	x	x	1	29	WASHER - Felt	63290	x	x	1
11	COVER- Air filter	58773-12	x	x	1	30	PIN- Cotter	86301	x	x	1
12	NUT- Air filter cover	A-65272	x	x	1	31	BOOT- Throttle rod	67634	x	x	1
13	RING- Retaining	58319-A	x	x	1	32	PLUG	63303	x	x	1
14	FILTER ELEMENT	63589-A	x	x	1	33	SHIELD- Spark plug	93209	x	x	1
15	BRACKET- Mounting	A-59822-A	x	x	1		PIN- (Not shown)	94142	x	x	1
16	ROD- Choke	A-69650-T	x	x	1	34	VALVE- Check	A-59011	x	x	1
	Includes:					35	SCREW- Idle	63302-B	x	x	1
17	GROMMET	58362	x	x	1	36	GROMMET- Hi-Lo	59770	x	x	1
18	ROD- Throttle	59763	x	x	1	37	PLUNGER- Spring	A-93783	x	x	1
19	SCREW- Hex, 12-24 x 7/8	80891	x	x	5		Includes:				
20	WASHER- Lock, #10	83046	x	x	2	38	SPRING- Compression	59293	x	x	1
21	SCREW- Hex, 10-32 x 2-11/16	80921	x	x	2	39	"O" RING	74388	x	x	1
22	PIN- Throttle latch	58924-4	x	x	1	40	VALVE- Check	A-59818	x		1

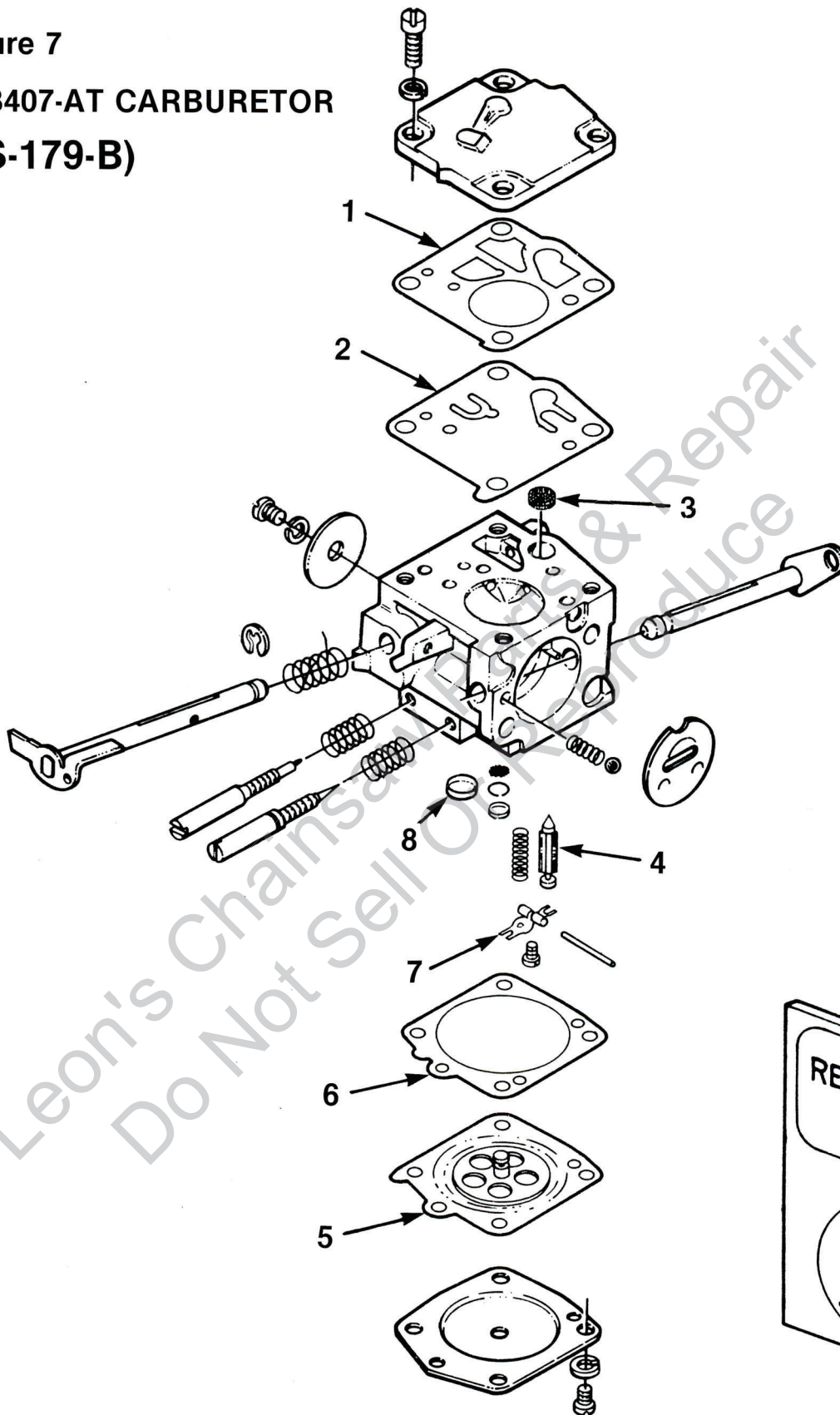
NOTE 1: The 63745-A Fuel Line is available for A-58767-C Carburetor.

ALWAYS FURNISH MODEL AND SERIAL NUMBER WHEN ORDERING PARTS.

# XL-12 & XL-AO

Figure 7

A-68407-AT CARBURETOR  
(HS-179-B)



95698

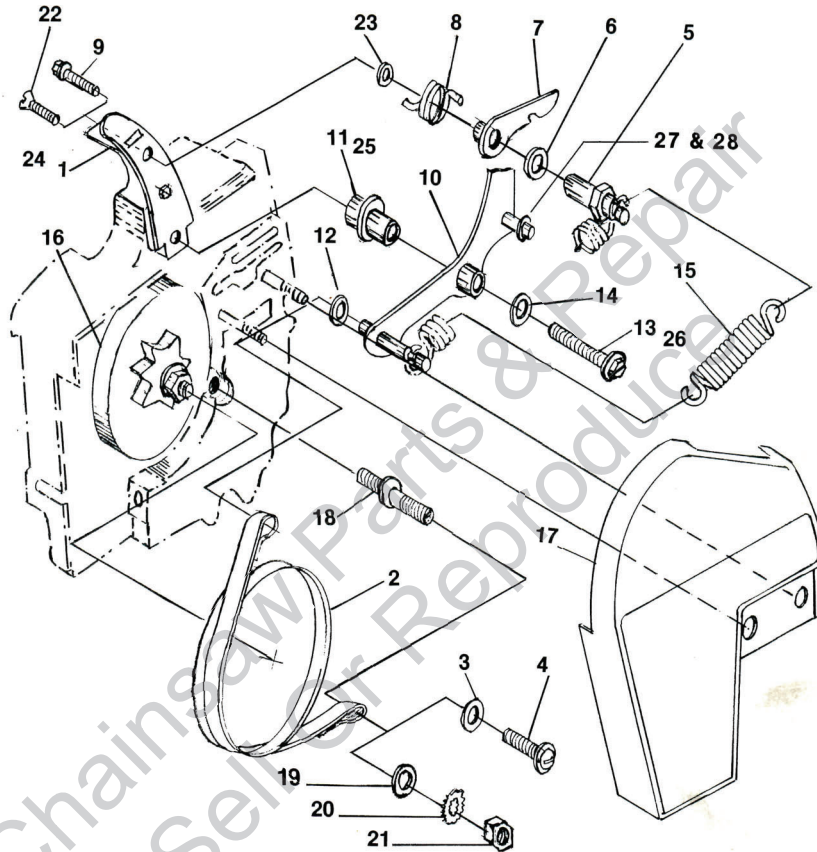
REPAIR KIT (1-8)



# XL-12 & XL-AO

Figure 8

A-78544 XL-12 CHAIN BRAKE - ASS'Y  
 A-78543 XL-AO CHAIN BRAKE - ASS'Y



No.	Description	Part No.	XL-12	XL-AO	Qty.	No.	Description	Part No.	XL-12	XL-AO	Qty.
1	BRACKET - Handle Bar	59246-5	x		1	15	SPRING - Chain Brake	70936	x	x	1
2	BAND - Brake	70886	x	x	1	16	SPROCKET & DRUM	A-78910	x	x	1
3	WASHER	84020	x		1	17	COVER - Drive Case	70931-2	x	x	1
4	SCREW 1/4-20 x 3/4	82322	x		1	18	STUD - Brake Bank	93067-IT		x	1
5	STUD - Spring	93130	x	x	1	19	WASHER	84004		x	1
6	WASHER	93229	x	x	1	20	WASHER - Lock	93077		x	1
7	LEVER - Locking	A-70935	x	x	1	21	NUT - Hex, 1/4-20	81053		x	1
8	SPRING - Torsion	93129	x	x	1	22	SCREW - Flat Hd., 12-24 x 3/4"	80901		x	1
9	SCREW - 12-24 x 1-1/2"	80868	x		1	23	WASHER	58851		x	1
10	LEVER - C/W Hand Guard	A-70946	x	x	1	24	BRACKET - Handle Bar	59651-10		x	1
11	SPACER - Lever Arm	93230	x		1	25	SPACER - Lever Arm	70934		x	1
12	WASHER	84006	x	x	1	26	SCREW - Hex Hd., 12-24 x 1-1/2"	80868		x	1
13	SCREW - 12-24 x 7/8"	80891	x	x	1	27	ROLLER (Not shown)	93625		x	1
14	WASHER	58851	x	x	1	28	RETAINING RING (Not shown)	70925		x	1

TOOLS REQUIRED

- 1 - Hacksaw
- 1 - Tap, no. 12-24 UNC
- 1 - Tap, 1/4-20 UNC
- 1 - Drill, no. 7(.201) Dia.
- 1 - Loctite - Grade D recommended

ALWAYS FURNISH MODEL AND SERIAL NUMBER WHEN ORDERING PARTS.

# XL-12 & XL-AO

## TOOLS FOR XL-12

Description	Part No.
PLIERS- Piston snap ring	22828
PLUG- Bearing assembly & disassembly connecting rod	23756
PLUG- Bearing assembly & disassembly drive & crankcases	23757
PLUG- Bearing installation	23819
PLUG- Seal assembly-drive & crankcase	23758
PLUG- Piston pin removal	A-23949
Includes:	
"O" RING	67900
PULLER- Magneto remover	A-23960
SLEEVE- Seal protecting - crankcase	23759
SLEEVE- Seal installation - drive and crankcase	23800
WRENCH- Hex socket screw (conn. rod)	23528
WRENCH- Spanner to assemble & disassembly clutch	A-23934
Includes:	
PIN	23954

## TOOLS FOR XL-AO

Description	Part No.
ANVIL- Crankshaft	23846-4
COLLAR- Ball bearing installation	22820-1
DRIVER- Check valve (For SDC Carburetor)	24173
JACKSCREW	A-23137
PLIERS- Piston snap ring	22828
PLUG- Bearing assembly & disassembly connecting rod	23756
PLUG- Bearing assembly & disassembly Drive & Crankcase	23757
PLUG- Bearing installation	23819
PLUG- Seal assembly-drive & crankcase	23758
PLUG- Seal installation - drivecase assembly	23845
PLUG- Piston pin removal	A-23949
Includes:	
"O" RING	67900
PULLER- Magneto remover	A-23960
SLEEVE- Bearing & shaft installation	23884-A
SLEEVE- Bearing & shaft installation	23136-2
SLEEVE- Seal protecting	23844
SLEEVE- Seal protecting-crankcase	23759
SLEEVE- Seal installation - drivecase	23843
SLEEVE- Seal installation - drive and crankcase	23800
WRENCH- Hex socket screw (connecting rod)	23528
WRENCH- Spanner to assemble & disassemble clutch	A-23934
Includes:	
PIN	23954
WRENCH- Socket	68651
SCREWDRIVER	24541
WRENCH- Insert	A-24322
TOOL- Clutch removal	A-93791
Includes:	
PIN	23717-A
BIT- Driver-torx 1/4"	
Hex Shank	24982-01
BIT- Driver-torx 5/16"	
Hex Shank	24982-02

## ACCESSORIES

Description	Part No.	XL-12	AO
KIT- Hand Guard	A-70910-T		
Includes:			
WASHER	58851-2	1	
WASHER	70788	1	
SLEEVE	70911	1	
SCREW- Machine Flat hd.	70926	1	
SCREW	80945	1	
NUT	81225	1	
SCREW	82223	1	
KIT- Hand guard	A-70944-T	1	
Includes:			
WASHER	58851-2	1	
WASHER	70788	1	
SLEEVE	70911	1	
SCREW	80945	1	
NUT	81225	1	
KIT- Safe•T•Tip	A-70790-T	1	1
Includes:			
SCREW	82335	1	1
UNIVERSAL CARRYING CASE	A-68776	1	1
REEL - Starting rope (100 ft.)	#5	1	1
KIT- Insert (for Drivecase Guide Bar Studs)	A-70370		1
TUBING- Rubber 10 ft. (Fuel)	94772-99	1	1
TUBING- Rubber 10 ft. (Oil)	70309-99	1	1

## PAINT

Description	Part No.	XL-12	AO
LACQUER- Red	23475	1	
LACQUER- Black	22772	1	1

# HOMELITE-TERRY TEXTRON

Homelite-Terry Division of Textron Canada Limite

