

# HOMELITE®

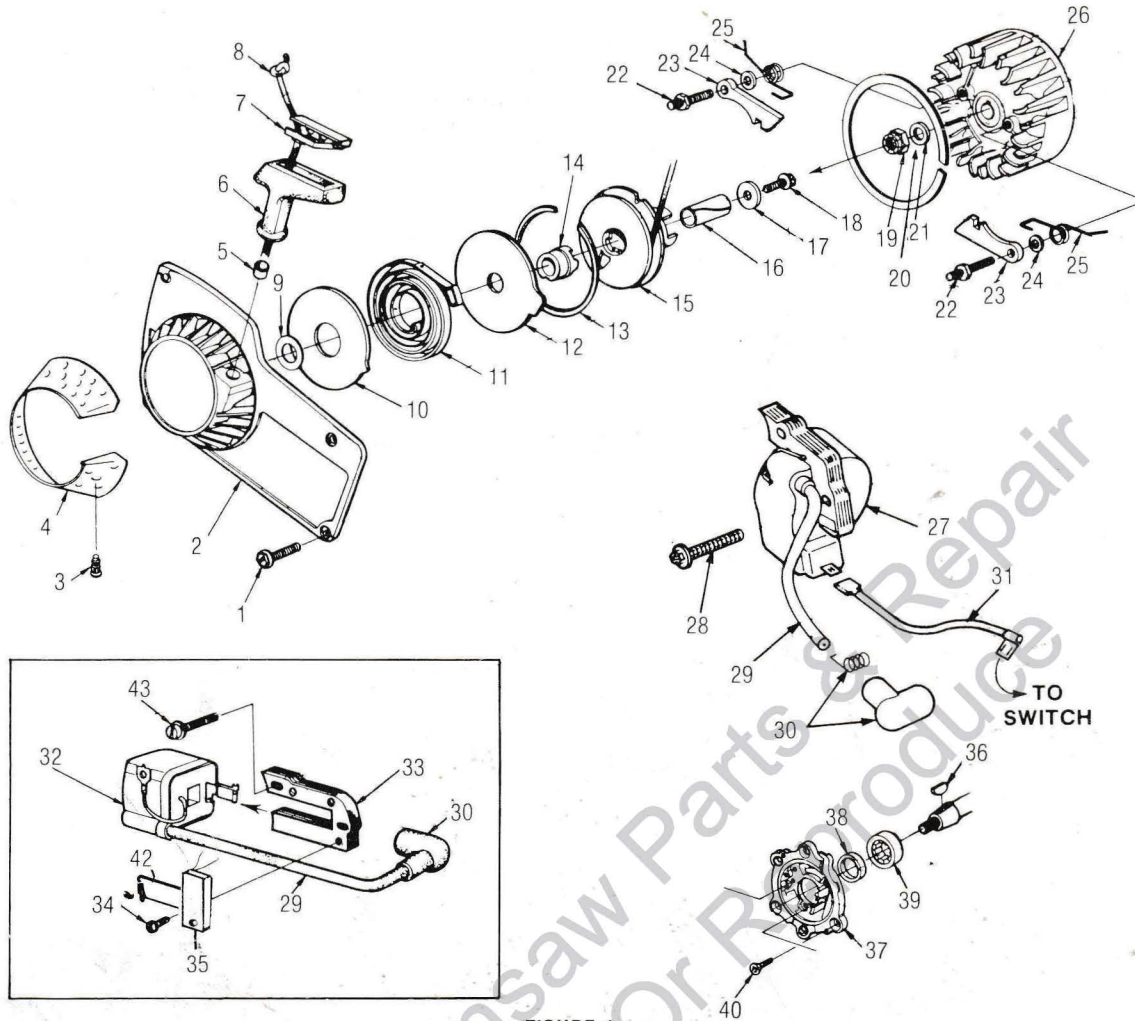
## XL-76

### CHAIN SAW PARTS LIST

**HOMELITE-TERRY**  
**TEXTRON**

Pointe Claire, Quebec

# XL-76



**FIGURE 1**

No.	Description	Part No.	Qty.	No.	Description	Part No.	Qty.
1	SCREW-Hex 10-32 x 5/8	80704	4	22	STUD-Shoulder	58757-E	2
2	HOUSING- Fan (Note 1)	A-78731	1	23	PAWL-Starter	64442	2
	Includes:			24	WASHER-Lock	70901	2
3	STUD-Drive	67191	1	25	SPRING-Starter Pawl	65375-1	2
4	SCREEN	65491	1	26	ROTOR-Magneto	63637	1
5	BUSHING	67177	1	27	MODULE & CORE	<del>A-79261</del>	1
6	GRIP-Starting Rope	94911	1	28	SCREW-Module core	82291	2
7	INSERT-Starting Rope	70018-A	1	29	LEAD-Hi-Tension	58966	1
8	ROPE-Starter	63869	1	30	TERMINAL-Spark Plug	A-33055	1
9	WASHER	67185	1	31	LEAD-Ground to Switch	A-63939	1
10	SHIELD-Spring (Inner)	63713	1	32	COIL-Ignition	64091-AT	1
11	SPRING-Rewind	63870	1	33	CORE-Coil	54422	1
12	SHIELD-Spring (Outer)	63714	1	34	SCREW	78158	1
13	RING	63875	1	35	MODULE ASS'Y	A-78865	1
14	LOCK-Spring	64948	1	36	KEY-Woodruff	75078	1
15	PULLEY & CUP ASS'Y	A-79090	1	37	PLATE-Back	A-68142	1
16	BUSHING-Starter Post	64374	1		Includes:		
17	WASHER-Retaining	94062	1	38	SEAL	12281-A	1
18	SCREW-Hex 10-32 x 1/2	80648	1	39	BEARING-Roller	67395	1
19	NUT-Jam 5/16 - 24	81117	1	40	SCREW	65321-A	5
20	WASHER-Lock 5/16	83030	1	41	RETAINER-Lead	64301	1
21	WASHER-Flat 5/16	84065-1	1	42	CLIP-Coil-Retaining	54423	1
				43	SCREW-Coil-Core	82248	2

**NOTE 1:** OLDER UNITS WITH MODULE A-78865, ITEM 35, USE FAN HOUSING A-78491.

**ALWAYS FURNISH MODEL AND SERIAL NUMBER WHEN ORDERING PARTS.**

# XL-76

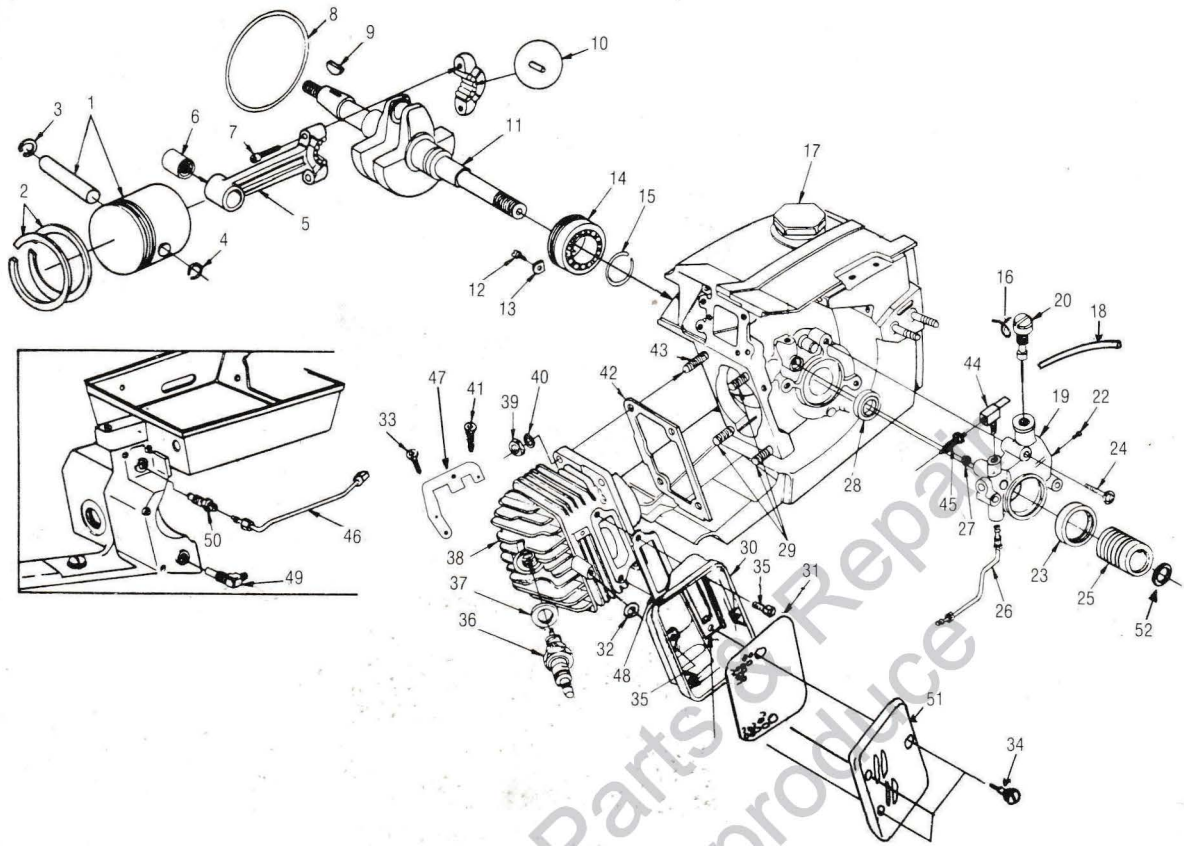
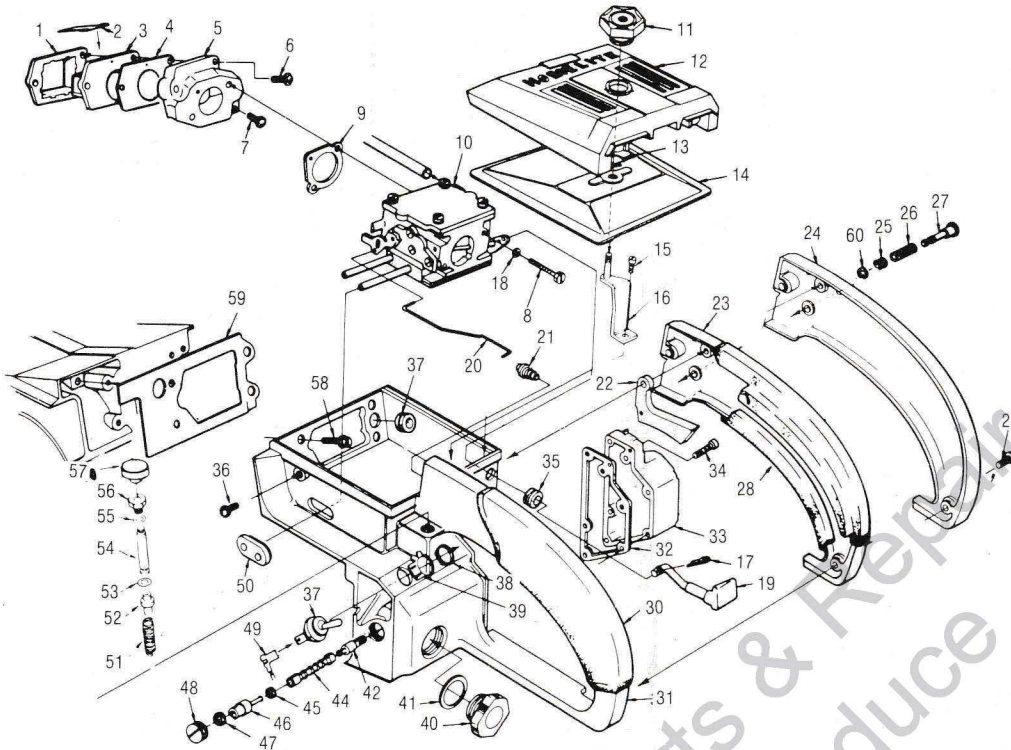


FIGURE 2

No.	Description	Part No.	Qty.	No.	Description	Part No.	Qty.
1	*PISTON & PIN Includes:	A-78496 <b>A 68438</b>	1	25	WORM-oil pump	63228	1
2	PISTON RING	59436	2	26	LINE-oil (auto. lower)	A-78105	1
3	RING-retaining	75120	1	27	"O" RING	59074	1
4	RING-piston pin retaining	64813	1	28	SEAL	58308-B	1
5	ROD-connecting Includes:	A-68498-A		29	STUD-cylinder (short)	69438	3
6	BEARING-needle	67408	1	30	BODY-muffler	A-64130-2	1
7	SCREW	69919	2	31	BAFFLE-muffler	64126	1
8	"O" RING	58785	1	32	WASHER	84102	1
9	KEY-Woodruff	75078	1	33	SCREW	82291	1
10	ROLLER-needle (set of 25)	A-68495	1	34	SCREW-shoulder	64133-A	2
11	CRANKSHAFT Solid State	68730-T	1	35	SCREW-hex, 12-24 x 5/8	78156	3
12	SCREW-Bearing retainer	70306	2	36	SPARK PLUG (RJ-7)	78279	1
13	WASHER-special	63905	2		Includes:		
14	BEARING-ball	63865	1	37	GASKET	25038	1
15	RING-retaining	58319-A	1	38	CYLINDER	A-78732	1
16	CLAMP	93426	1	39	NUT-hex, 1/4-28	81065-2	4
17	CAP-fuel filler	A-69500	1	40	WASHER-lock, 1/4	83009	4
18	LINE-oil (Auto. upper)	93112-09	1	41	SCREW	80024	1
19	PUMP-automatic oil Includes: Item 44 & 45	A-79042	1	42	GASKET-cylinder	65829	1
20	SCREW-cam	64102-A		43	STUD-cylinder (long)	63868	1
21	GASKET	59736	1	44	CONNECTOR-elbow	A-79031	1
22	SCREW-pan, 4-40 x 1/4	80919	2	45	FITTING-straight	65696	1
23	SEAL-felt	59760	1	46	LINE-oil (manual)	A-78131	1
24	SCREW-pan 8-32 x 7/8	80568	3	47	BRACKET, MODULE	78636	1
				48	GASKET	78102	1
				49	FILTER-oil	A-64741-T	1
				50	VALVE-check	A-65948-1	1
				51	CAP-Muffler	64125-1	1
				52	FELT-washer	59760	1

ALWAYS FURNISH MODEL AND SERIAL NUMBER WHEN ORDERING PARTS.

# XL-76



**FIGURE 3**

No.	Description	Part No.	Qty.	No.	Description	Part No.	Qty.
1	RETAINER-reed valve	64253-A	1	31	HANDLE-throttle	A-68483-T	1
2	REED-valve	59678-B	4		Includes: Item 28 & 30 also		
3	SEAT-reed valve	64252	1		Includes:		
4	GASKET-reed valve seat	64266-T	1	32	GASKET-oil tank	67265	1
5	MANIFOLD-intake	A-67502-A	1	33	COVER-oil tank	A-68120-A	1
6	Includes:				Includes:		
	SCREW-pan, 8-32 x 1-1/4	82174	2		PLUG-pipe (not shown)	59571	1
7	SCREW-pan, 8-32, 1	82173	1	34	SCREW-fil, 8-32 x 3/4	82156	6
8	SCREW-hex, 10-32, 1-7/8	70549	2	35	GROMMET	64862	2
9	GASKET-carburetor	67631	1	36	PLUG	53572	1
10	CARBURETOR	A-78349	1	37	SWITCH	A-63938	1
11	NUT-cover mounting	A-65272	1		Includes:		
12	COVER-air filter	63183-7	1	38	NUT	72084-A1	1
13	RING-retaining	58319-A	1	39	PLATE—"Run Stop"	70834	1
14	FILTER ELEMENT-air (Note 1)	A-63955-T	1	40	CAP-oil (vented)	<del>A-65284-AT</del> 68725	1
15	SCREW-hex, 12-24 x 1/2	80821	1	41	Includes:		
16	BRACKET-air filter cover	A-63576	1		GASKET	69834	1
17	PIN-cotter	86324	1		VALVE-vent (not shown)	69451	1
18	WASHER-lock, 10	83046	2	42	FILTER-oil (manual)	A-59009-A	1
19	ROD-choke	67000-1	1	44	LINE-flexible oil	64356	1
20	ROD-throttle	63896-A	1	45	GASKET	59736	1
21	BOOT-throttle rod	67634	1	46	FITTING-check valve	A-63936	1
22	TRIGGER-throttle	63212-A	1	47	GROMMET	64474	1
23	COVER-throttle handle	63599-5	1	48	SCREW-set	63113	1
24	COVER-without item 28	63599-3	1	49	LEAD-ground	A-63939	1
25	BUSHING-throttle lock	59064	1	50	GROMMET-"Hi-Lo"	78140	1
26	SPRING-throttle lock	58405	1	51	SPRING-plunger	65080	1
27	PIN-throttle lock	95671	1	52	PLUNGER-oil pump	65081-A	1
28	GRIP-throttle handle cover	68467	1	53	"O" RING	58406	1
29	SCREW-pan, 8-32 x 1/2	80560	2	54	ROD plunger	A-78103	1
30	GRIP-throttle handle	68466	1	55	Includes:		
					"O" RING	59074	1
				56	NUT-plunger	78100	1
				57	BUTTON-oil pump	57289-1	1
				58	SCREW-hex, 12-24 x 5/8	80676	4
				59	GASKET-throttle handle	64267-T	1
				60	RING retaining	64474	1

Note 1: FILTER-ELEMENT (WINTER) A-69577 is also available.

**ALWAYS FURNISH MODEL AND SERIAL NUMBER WHEN ORDERING PARTS.**

# XL-76

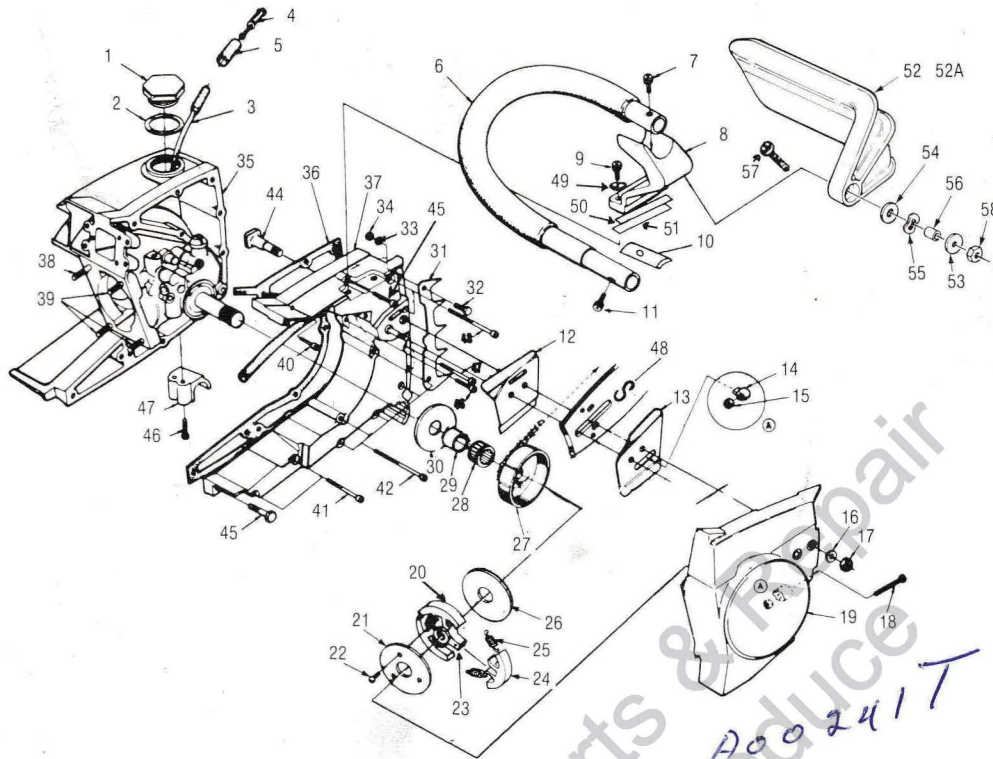


FIGURE 4

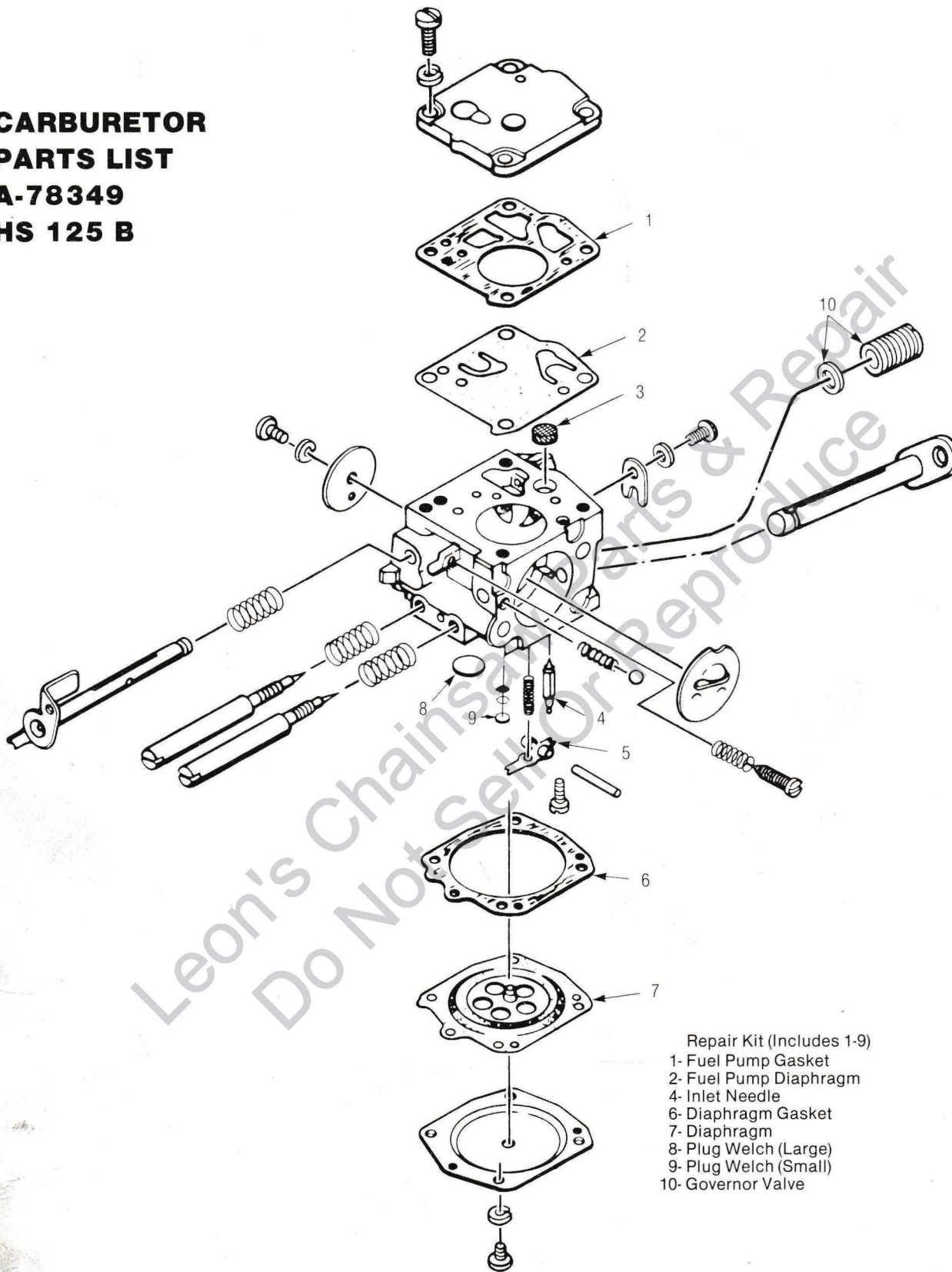
No.	Description	Part No.	Qty.	No.	Description	Part No.	Qty.
1	CAP-fuel filler Includes:	A-69500	1	31	BUMPER-spiked (optional) Includes:	A-64722	1
2	GASKET	69501	1	32	SCREW-hex, 12-24 x 5/8"	80676	2
3	LINE-fuel	63544-B	1	33	WASHER-lock no. 12	83056	2
4	FILTER-fuel Includes:	A-69923	1	34	NUT-hex, 12-24	81068	2
5	FELT-filter	64083	1	35	CRANKCASE & TANK Includes:	A-79043	1
6	HANDLE-BAR flush-cut	A-78459-A	1		PIN-dowel (not shown)	71430	1
7	SCREW-FIL. 10-32 x 1"	80041	1		PIN-dowell (not shown)	65365	2
8	BRACKET-handle bar	A-68995-A	1		SEAL (see fig. 2, Index 28)	58308-B	1
9	SCREW	68338	2	36	GASKET-fuel tank	65364-A	1
10	SPACER	78485	1	37	COVER-fuel tank	A-79041	1
11	SCREW-FIL, Hd. 1/4 x 20 1/8"	78117	1	38	STUD-cylinder (long)	63868	1
12	PLATE-guide bar (inner)	70397	1	39	STUD-cylinder (short)	69438	3
13	PLATE-guide bar (outer)	70398	1	40	SCREW-fil, 8-32 X 15/16"	78629	2
14	PIN-bar adjusting	65768-IT	1	41	SCREW-fil, 8-32, x 1-7/8"	78631	3
15	NUT-lock, 10-32	81206	1	42	SCREW-fil, 8-32 x 1-3/16"	78632	7
16	WASHER-flat, 5/16	84032	2	43	SCREW-fil, 8-32 x 1-1/4"	78630	1
17	NUT-hex, 5/16-18	81196	2	44	BOLT-guide bar	67193	2
18	SCREW-guide bar adjusting	65175-A	1	45	SCREW-hex 12-24 x 7/8	80891	1
19	COVER-drivecase	A-64620-10	1	46	SCREW-pan head	80572	2
20	CLUTCH ASS'Y Includes:	<del>A-79182</del> 79231	1	47	STOP-handle bar	67506-2	1
21	COVER, Clutch	96449	1	48	"S" CLIP	69966	1
22	SCREW, Hex. Hd. 10-32 x 1/2"	88041	3	49	GROMMET	64474	1
23	SPIDER-clutch	79188	1	50	PAD	64610	1
24	SHOE-clutch	79073	1	51	PLATE	65586	1
25	SPRING-clutch	93638-A	1	52	HAND-guard kit Includes:	A-79004	1
26	WASHER	78111	1	52A	GUARD-hand	95898-A	1
27	SPROCKET & DRUM 3/8P-7T Includes:	<del>A-78998</del> A 95459	1	53	WASHER	95935	2
28	BEARING-cage (Note 1)	64124	1	54	WASHER	84065	1
29	RACE-inner (Note 1)	65985-B	1	55	WASHER-wave	96757	1
30	WASHER-thrust (inner)	63860	1	56	SPACER	95937-01	1
				57	SCREW	80945	1
				58	NUT	81225	1
					HANDLE BAR (wrap-around) - optional	A-78506	1

NOTE 1: Some units may have bearing # 64333 and Race # 63990

ALWAYS FURNISH MODEL AND SERIAL NUMBER WHEN ORDERING PARTS.

# XL-76

**CARBURETOR  
PARTS LIST  
A-78349  
HS 125 B**

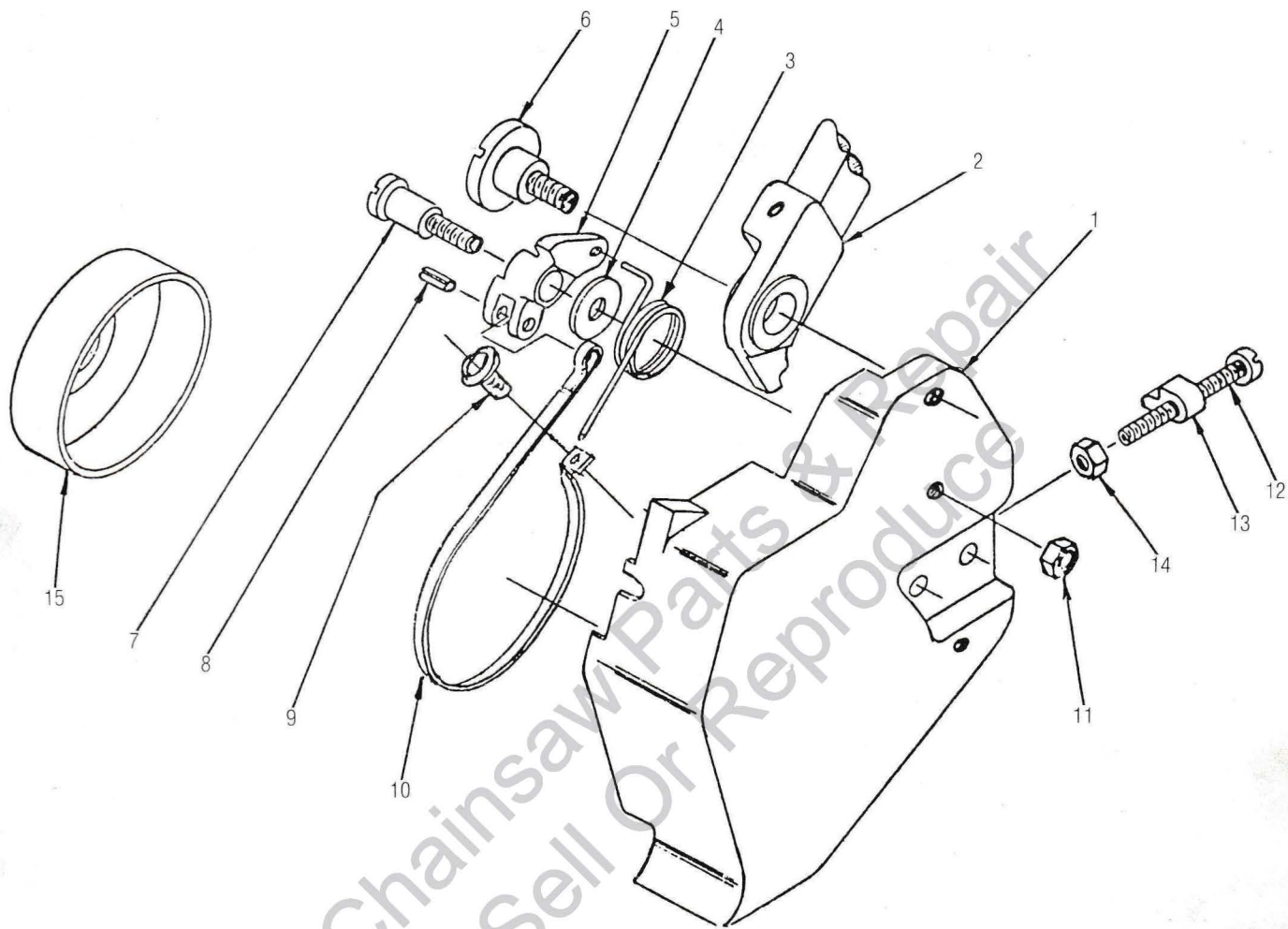


Repair Kit (Includes 1-9)	95698
1- Fuel Pump Gasket	58981
2- Fuel Pump Diaphragm	58980
4- Inlet Needle	59717
6- Diaphragm Gasket	58978
7- Diaphragm	58988
8- Plug Welch (Large)	58991
9- Plug Welch (Small)	58994
10- Governor Valve	78133

ALWAYS FURNISH MODEL AND SERIAL NUMBER WHEN ORDERING PARTS.

# XL-76

## CHAIN-BRAKE KIT-A-78774 ITEM 1 TO 16



No.	Description	Part No.	Qty.	No.	Description	Part No.	Qty.
1	COVER-drive case	78361-2	1	11	NUT, hex 1/4-20	81108	1
2	LEVER & hand guard	A-78355	1	12	SCREW, bar adj.	65175-A	1
3	SPRING, torsion	70093-B	1	13	PIN, bar adj.	65768-1	1
4	WASHER	12290	1	14	NUT, hex 10-32	81206	1
5	LEVER, brake band	78319-1	1	15	SPROCKET & DRUM	A-78910	1
6	SCREW, shoulder	12955	1	16	CLUTCH ASS'Y (not shown)	A-78400-A	1
7	SCREW, cam	79201	1		Includes:		
8	ROLL PIN 3/16 x 1/2	67911	1		SPIDER	78401	1
9	SCREW, pan hd. 8-32 x 5/8	80582	1		SHOE	69754-1C	6
10	BAND, brake	78726	1		SPRING	67441	2

CHAIN-BRAKE KIT # A-78773 consisting of items 1 to 5 is also available for Model SXL-130

ALWAYS FURNISH MODEL AND SERIAL NUMBER WHEN ORDERING PARTS.

# XL-76

## SPECIAL TOOLS (available in order)

Description	Part No.
COLLAR-bearing installation (bearing to shaft)	22820-5
PLIERS-retaining and shaft	22828
SLEEVE-bearing and shaft installation	23136-1
WRENCH-socket screw (connecting rod)	23528
PLUG-needle bearing	23756
SLEEVE-seal protection	23759
ANVIL-roller bearing disassembly	23846-2
TOOL-piston pin removal	A-23949
BRACKET-rotor removal	A-23960
SLEEVE-seal installation	23972
PLATE-shaft alignment	24006-2
JACKSCREW (bearing to shaft to crankcase)	A-24051
PLUG-seal assembly (crankcase)	24054
PLUG-bearing and seal assembly (black plate)	24055
BEARING REMOVER- (black plate)	A-24057
SLEEVE-seal protection (crankcase side)	24076
DRIVER-hand, pozidriv	24230
DRIVER-check valve installation	24173
BIT - TORX for 70306 screw	24982
BIT - pozidriv No. 2	120875
WRENCH combination	22808-T
PULLER	A-122055
SPANNER wrench (clutch)	A-17146
SHIM plastic	23987
SPARK plug remover	24094
DRIVER bit for con rod screw	24982

## ACCESSORIES

HEAT EXCHANGER	65543-1
SPRAY CAN-red paint	23475
CHAIN brake ass'y	A-78774
SAFE-T-TIP	A-70790-T
LOCTITE	23488-B
STARTING rope 100 ft.	4-1/2

Leon's Chainsaw Parts & Repair  
Do Not Sell Or Reproduce

**HOMELITE-TERRY**  
**TEXTRON**