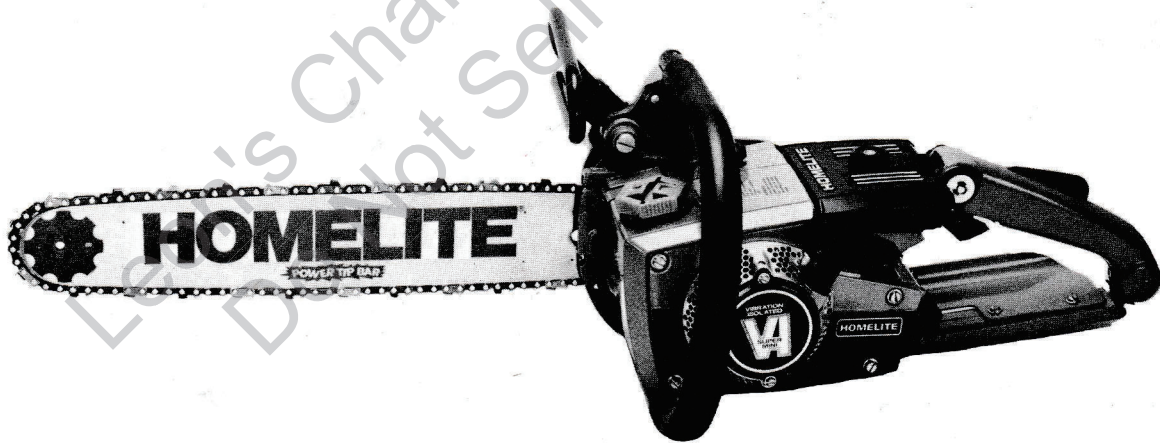


# VI

H O M E L I T E  
C H A I N S A W

# SUPER MINI SL



**HOMELITE-TERRY**  
**TEXTRON**

Homelite-Terry  
Division of Textron Canada Limited

180 Labrosse Ave., Pointe Claire, Que.

PRICE .35  
PART NO. 24661-T

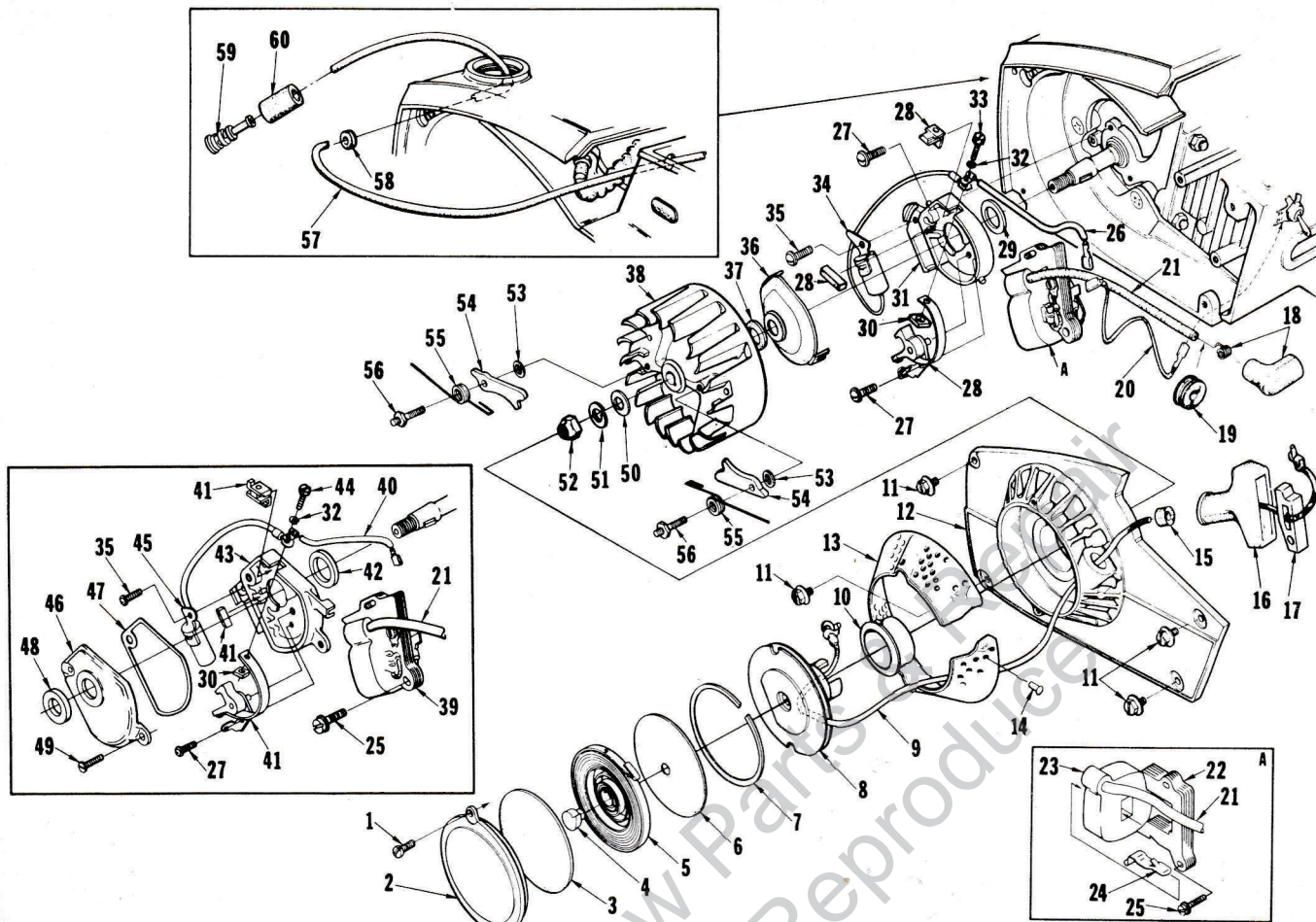
PRINTED IN CANADA



# PARTS LIST



# VI Super Mini-SL



No.	Description	Part No.	Qty.
1	SCREW-pan, 8/32 x 3/8	80577	2
2	COVER-starter	65095-2	1
3	SHIELD-spring (inner)	65113	1
4	LOCK-spring (inner)	65102	1
5	SPRING-rewind	65107	1
6	SHIELD-spring (outer)	65114	1
7	RING-retaining	65125	1
8	PULLEY & CUP	A-65170	1
9	ROPE-starter, 46" #4	65118	1
10	BUSHING-starter cup	68244	1
11	SCREW-hex., 10-32 x 5/8	80704	4
12	HOUSING-rewind starter	A-65222-1	1
Includes:			
13	SCREEN-air inlet	65189	1
14	STUD-drive #2	67191	3
15	BUSHING-starter rope	65185	1
16	GRIP-starter rope	64155-B	1
17	INSERT-rope retaining	68837-AT	1
18	TERMINAL-hi tension lead	A-33055	1
19	GROMMET-hi tension lead	75036	1
20	LEAD-ground	A-63939	1
21	LEAD-hi tension	65205	1
22	CORE-coil	(P)68255	1
23	COIL-ignition	(P)68256	1
24	RETAINER-coil	(P)68257	1
25	SCREW-coil core	82248	2
26	LEAD GROUP-primary	(P)65291	1
27	SCREW-pan, 6-32 x 3/8	80571	2
28	POINTS-breaker	(P)A-65203-A	1
Includes:			
29	SEAL-felt	(P)65209	1
30	NUT-square	65207	1
31	BOX-breaker	(P)65206-A	1
32	WASHER-lock, #6	83004-1	1
33	SCREW-hex, 6-32 x 7/16	(P)67628	1

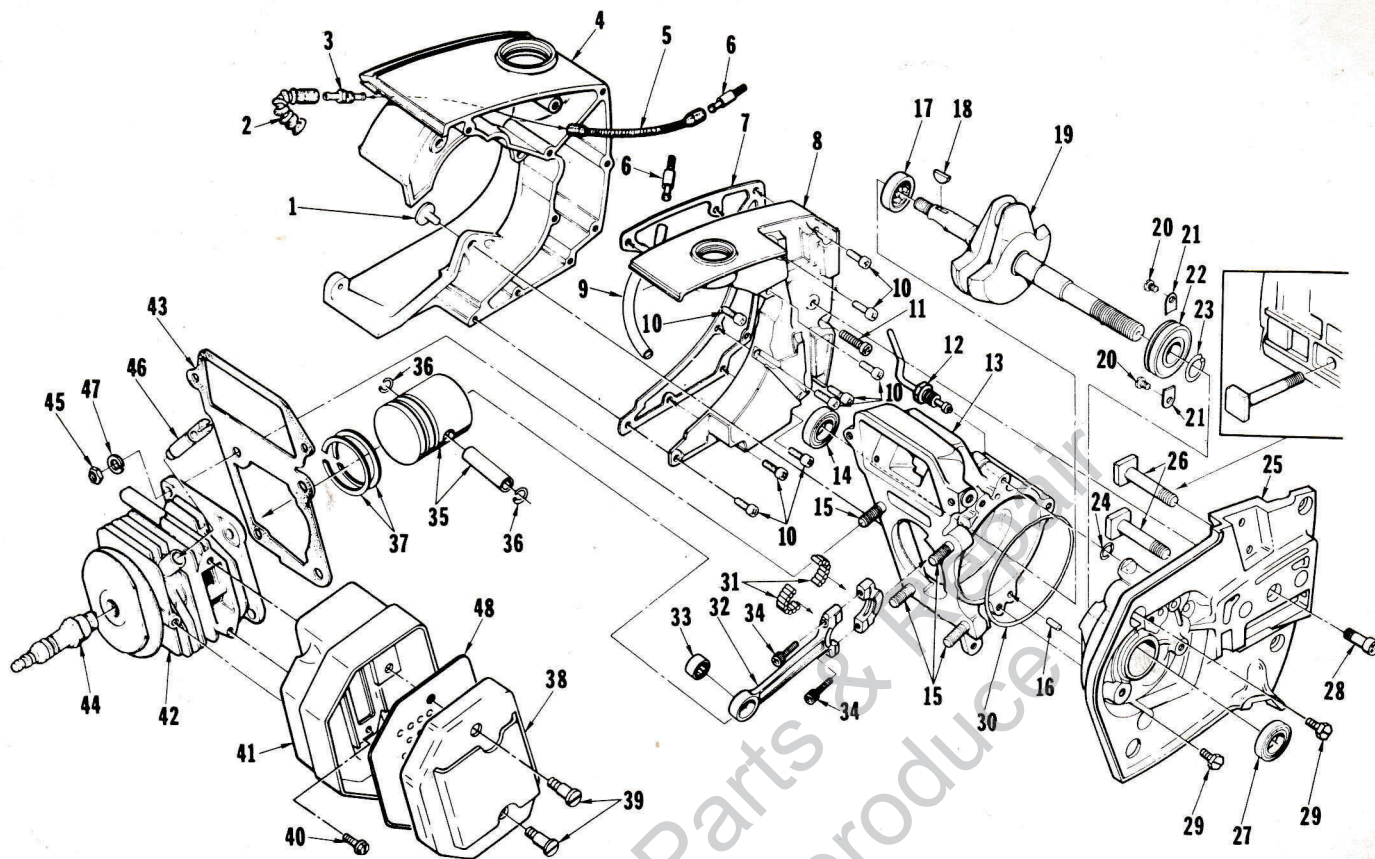
No.	Description	Part No.	Qty.
34	CONDENSER	(P)65286	1
35	SCREW-pan, 6-32 x 1/2	80630	1
36	COVER-breaker box	(P)A-65210-A	1
Includes:			
37	SEAL-felt breaker box cover	(P)65211	1
38	ROTOR-magneto	(P)65288-A	1
	ROTOR-magneto	(W)68701	1
39	COIL & CORE	(W)68716	1
40	LEAD GROUP-primary	(W)68712	1
41	POINTS-breaker	(W)A-68710	1
Includes:			
42	SEAL-felt	(W)68705	1
	WASHER-thrust (not shown)	(W)28028	A/R
	CLIP-breaker arm (not shown)	(W)28008	1
43	BOX-breaker	(W)69508	1
44	SCREW-hex, 6-32 x 1/2	(W)68700	1
45	CONDENSER	(W)68711	1
46	COVER-breaker box	(W)A-69507	1
Includes:			
47	GASKET-breaker box cover	(W)69512	1
48	SEAL-breaker box cover	(W)68773-1	1
49	SCREW-cover mounting	(W)68715	2
50	WASHER-flat, 5/16	84065-1	1
51	WASHER-lock	83002	1
52	NUT-hex, 5/16-24	81117	1
53	WASHER-starter pawl	83046	2
54	PAWL-starter	65108	2
55	SPRING-starter pawl	65120	2
56	STUD-starter pawl	65109	2
57	LINE-fuel	A-68053-A	1
Includes:			
58	GROMMET	68046	1
59	FILTER-fuel	A-69923	1
Includes:			
60	FILTER-felt	64083	1

Complete magneto must be either Wico or Phelon.  
Phelon and Wico parts are not individually interchangeable.

\* Denotes new parts  
(P) Phelon (W) Wico



# VI Super Mini-SL



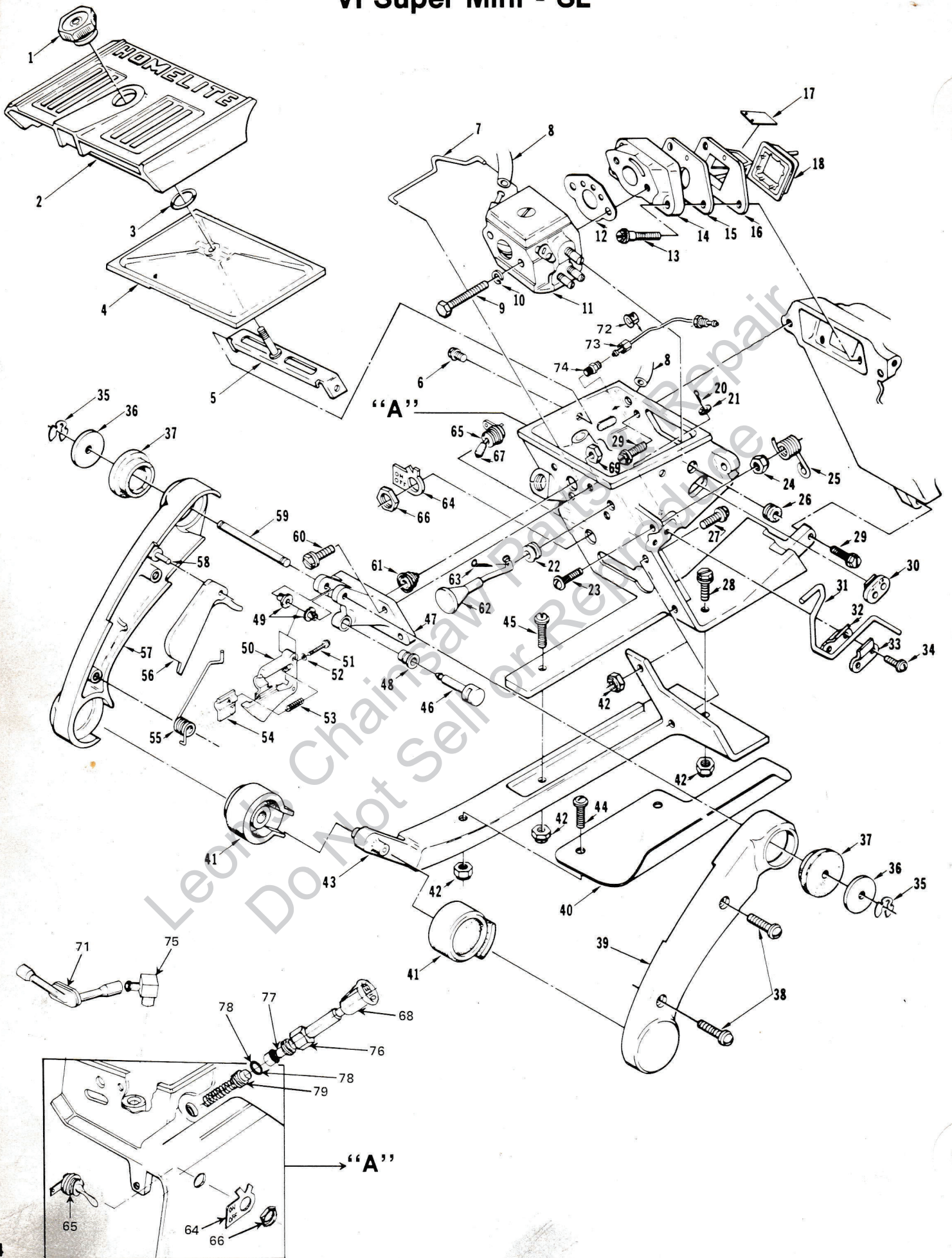
No.	Description	Part No.	Qty.	No.	Description	Part No.	Qty.
1	SCREW-retaining	65321-A	3	28	SCREW-retainer	65157-A	1
2	LINE-oil (flexible)	65137	1	29	SCREW-hex, 12-24 x 5/8	80676	3
3	FITTING-oil line	65138-A	1	30	"O" RING	65127	1
*4	TANK-fuel & oil	65037-8	1	31	BEARING-needle (set of 28)	A-65009	1
*5	LINE-oil (pick-up)	93112-14	1	32	ROD-connecting	A-68051	1
6	FILTER-oil	A-64293	2		Includes:		
7	GASKET-fuel & oil tank	65046		33	BEARING-needle	68512	1
8	COVER-fuel & oil tank	A-69832	1	34	SCREW-soc., 8-32 x 9/16	69919	2
9	LINE-oil	70309-22	1	*35	PISTON & PIN	A-78416	1
10	SCREW-fil, 8-32 x 5/8	82146	9		Includes:		
11	SCREW-fil, 8-32 x 1-7/16	82187	1	36	RING-piston pin retaining	64813	2
12	LINE-oil	A-65214	1	37	PISTON RING	68508	2
13	CRANKCASE	A-69260	1	*38	CAP-muffler w/shield	A-70643-1	1
	Includes:			39	SCREW-shoulder	64133-A	2
14	SEAL	65019	1	40	SCREW-hex., 10-32 x 1/2	80648	3
*15	STUD-cylinder	69438	4	41	BODY-muffler	A-65152-2	1
16	PIN-dowel	65153	1		ARRESTOR-spark (not shown)	A-65256	1
17	BEARING-roller	65179	1	42	CYLINDER-1-9/16 dia.	A-69737	1
18	KEY-woodruff	65126	1		Includes:		
19	CRANKSHAFT	65006-2	1	43	GASKET-cylinder	65018	1
20	SCREW-bearing retaining	70306	2	44	SPARK PLUG RDJ6J	78275	1
21	WASHER-lock special	63905	2	45	NUT-hex, 1/4-28	81065-2	4
22	BEARING-ball	65044-S	1	46	VALVE-compression release	A-65184	1
23	RING-retaining	65045	1	47	WASHER-lock, 1/4	83009	4
24	"O" RING	59074	1	48	BAFFLE-muffler	65067	1
*25	DRIVECASE	A-93960	1				
	Includes:						
26	BOLT-guide bar	65025	2				
27	SEAL	65019	1				

\* Denotes new parts

ALWAYS FURNISH MODEL AND SERIAL NUMBER WHEN ORDERING PARTS.



# VI Super Mini - SL





# VI Super Mini - SL

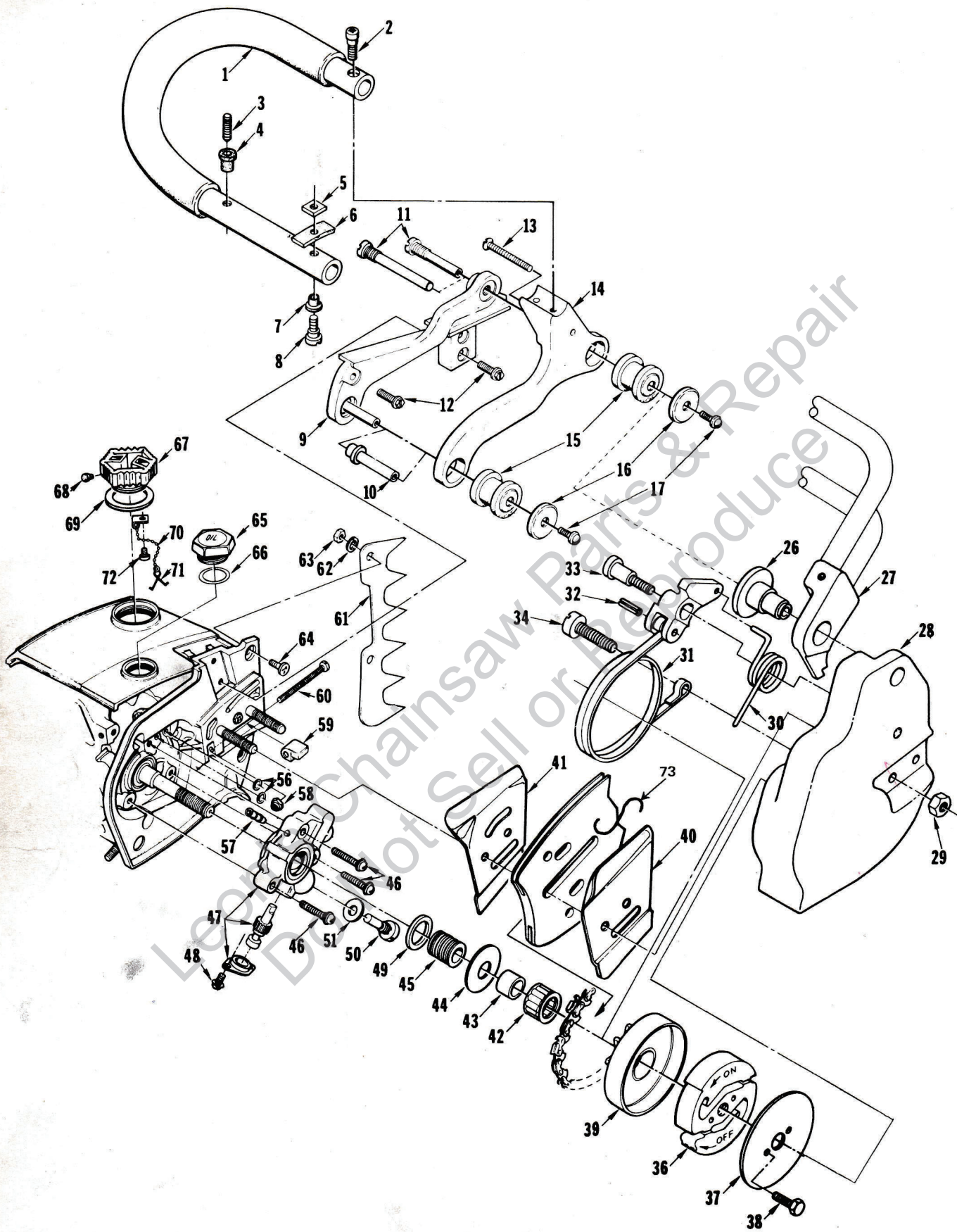
No.	Description	Part No.	Qty.	No.	Description	Part No.	Qty.
1	NUT-cover mounting	A-65272	1	40	KIT-hand guard	A-69772	1
2	COVER-air filter	65096-8	1		Includes:		
3	RING-retaining	58319-A	1		NUT-hex, 10-32 (item 42)	81206	
4	FILTER ELEMENT-air	A-65178	1		SCREW-10-32 x 9/16 (item 44)	80576	
5	BRACKET-air filter cover	A-65123	1		SCREW-10-32 x 5/8 (item 45)	80572	
6	SCREW-pan, 8-32 x 3/8	80577	2	41	ISOLATOR-vibration	68325-A	2
7	ROD-throttle	68698	1	42	NUT-hex centerlock	81206	6
8	LINE-fuel (see item 57, figure 1)	A-68053-A	1	43	BASE-handle	A-69114-3	
9	SCREW-hex, 10-32 x 1-5/8	82165	2	44	SCREW-pan hd., 10-32 x 9/16	80576	
10	WASHER-lock, #10	83046	2	45	SCREW-pan hd., 10-32 x 5/8	80572	1
11	CARBURETOR-HDC-44	A-68415-A	1	46	PIN-trigger latch	65171-A	1
12	GASKET-carburetor	65016	1	47	BRACKET-trigger throttle	A-69630	1
13	SCREW-shoulder	64349-A	3		Includes:		
14	MANIFOLD-intake	A-65154-1A	1	48	BUSHING	67752-1	1
15	GASKET-reed valve seat	65014-A	1	49	BUSHING-nylon	63400	2
16	SEAT-reed valve	65010	1	50	TRIGGER-throttle	65031-1A	1
17	REED-valve	65012-A	4	51	SCREW-pan, 6-40 x 1	82198	1
18	RETAINER-reed valve	65011-A	1	52	"O" RING	65260	1
*19	CARBURETOR CHAMBER	A-69261	1	53	SPRING-throttle stop	65188	1
	Includes:			54	STOP-throttle adjustment	65147-A	1
20	PIN-cotter, 1/16 x 1/2	86301	1	55	SPRING-trigger latch	68681	1
21	WASHER-felt	63290	1	56	TRIGGER-throttle latch	68696	1
22	GROMMET-choke	64862	1	57	HANDLE-throttle (left)	A-69120	1
23	SCREW-rd. hd., 10-32 x 7/8	80040	1		Includes: PIN-dowel	65365	1
24	NUT-hex flexloc, 10-32	81010-1	1	59	PIN-trigger	68699-1	1
25	SPRING-release valve	65174	1	60	SCREW-hex hd., 8-32 x 1/2	80983	4
26	GROMMET-idle	68197	1	61	BOOT-throttle rod	67634	1
27	SCREW-pan hd., 10-32 x 1/2	80625	2	62	ROD-choke	65072-1	1
28	SCREW-hex hd., 10-32 x 1/2	80648	2	63	PIN-cotter, 1/32 x 1/2	86324	1
29	SCREW-hex hd., 12-24 x 5/8	80676	3	64	PLATE-"on-off"	63910	1
30	GROMMET-"hi-lo"	68196	1	65	SWITCH-toggle	A-63938	1
31	LEVER-release	69126	1	66	Includes: NUT-hex	72084-A	1
32	PLATE-lever	65092	1	67	SLEEVE-grounding switch	69092	1
33	CLAMP-lever	65093	1	*68	BUTTON, oil pump	70820-1	1
34	SCREW-pan, 6-32 x 3/8	80571	2	69	NUT-hex, 8-32	81223	4
35	RING-retaining	69322	2	71	LINE-oil	65137	1
36	WASHER-flat	69122-1	2	72	GROMMET-oil line	65085	1
37	ISOLATOR-vibration	68324-A	2	73	LINE-oil	A-65214	1
38	SCREW-pan hd., 8-32 x 5/8	80582	2	74	CHECK VALVE (outlet)	A-65077	1
39	HANDLE-throttle (right)	68691-2	1	75	CHECK VALVE (inlet)	A-65076	1
				*76	NUT-plunger	93665	1
				*77	ROD, oil pump plunger	93664	1
				78	"O" RING	58406	2
				*79	PLUNGER-oil pump	A-67235-A	1
					Includes Item 78		

\* Denotes new parts

ALWAYS FURNISH MODEL AND SERIAL NUMBER WHEN ORDERING PARTS.



# VI Super Mini - SL



Watermark: Chainsaw Parts & Repair



# VI Super Mini - SL

No.	Description	Part No.	Qty.	No.	Description	Part No.	Qty.
1	HANDLE BAR-flush cut	A-69121-1A	1	42	BEARING-unit cage	64333	1
2	SCREW-fil. hd., 10-32 x 1	80041	1	43	RACE-inner	69423	1
3	SCREW-set, 10-32 x 1-1/4	82243	1	44	WASHER-thrust (outer)	65064	1
* 4	SLEEVE-flanged	69648	1	45	GEAR-worm	65047-A	1
5	PLATE-handle bar	65670	1	46	SCREW-pan, 8-32 x 3/4	80567	3
6	PAD-rubber	65124	1	47	PUMP-automatic	A-65212-B	1
7	GROMMET-handle bar	65122	1		Includes:		
8	SCREW-shoulder	65121	1	48	SCREW-pan, 4-40 x 1/4	80919	2
9	BRACKET-vibration mount	A-69118-1	1	49	SEAL	65142	1
	Includes:			50	SCREW-cam	65136	1
10	PIN-vibration mount	69117-A	1	51	GASKET	65145	1
11	SCREW-vibration mount	69554	1	56	"O" RING	59074	2
12	SCREW-hex, 10-32 x 5/8	80704	3	57	FITTING-tube	69833	1
13	SCREW-flat, 12-24 x 1-1/2	82223	1	58	NUT-Flexloc, 10-32	81206	1
14	BRACKET-handle bar	A-69262	1	59	PIN-guide bar adjusting	65112-1	1
15	ISOLATOR-vibration	68320-A	2	60	SCREW-guide bar adjusting	65175-A	1
16	WASHER	68998-1	1	61	KIT-spiked bumper (accessory)	A-65181	1
17	SCREW-pan, 10-32 x 5/16	82175	1		Includes:		
26	SUPPORT-vibration mount	69552	1	62	WASHER-lock, #10	83006-1	2
27	GUARD-hand	A-69660	1	63	NUT-hex, 10-32	81010-1	2
28	COVER-drivecase	A-69535-2A	1	64	SCREW-flat, 10-32 x 5/8	80035	2
29	NUT-5/16-18	81196	2	*65	CAP-oil filter (vented)	A-65284-B	1
30	SPRING-torsion	70093-A	1		Includes:		
31	BRAKE BAND & LEVER	A-69558-A	1	66	GASKET-oil cap	69834	1
32	Includes: PIN-spring, 3/16 x 1/2	67911	1		VALVE-check (not shown)	69451	1
33	SCREW-shoulder	69551	1	67	CAP-fuel filler	A-69500	1
34	SCREW-pan hd., 1/4-20 x 5/8	82258	1		Includes:		
36	CLUTCH	68362-1A	1	68	FILTER-filler cap	69454	1
37	PLATE	69915	1		VALVE-check (not shown)	69451	1
38	SCREW	80361-2	2	69	GASKET	69501	1
39	SPROCKET & DRUM			70	CHAIN-bead	69502	1
	7 tooth, 3/8 Pitch	A-69436-5	1	71	RETAINER-filler cap	69503	1
*40	PLATE-guide bar (outer)	70398	1	72	SCREW	82256	1
*41	PLATE-guide bar (inner)	70397	1	73	SPRING-guide bar	69966	1

\* Denotes new parts

## ACCESSORIES

COMPOUND-sealing (Duxeal)	24352
KIT-Locktite	23488-B

## PAINT

SPRAY CAN-black	22772
SPRAY CAN-red	23475

## TOOLS

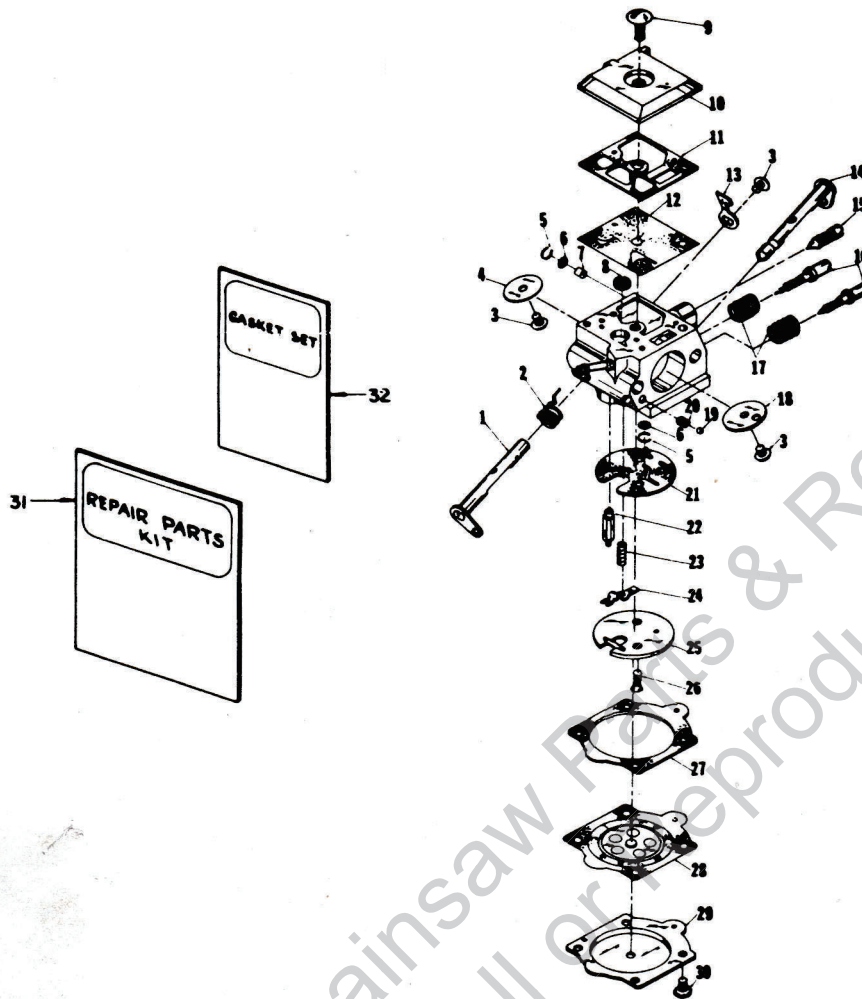
ANVIL-crankshaft installation	24299
BIT-#3 pozidriv	24320
COLLAR-bearing installation	24295
DRIVER-check valve (carburetor)	24173
GAGE-feeler	22486
JACKSCREW	A-24309
Includes: WASHER	84035
PLUG-bearing & seal installation	24298
PLUG-needle bearing installation	24294
PLUG-seal & bearing removal	24292

PULLER-magneto rotor	A-24290
Includes:	
RING-retaining (4)	67912
SCREW-rotor remover (4)	24301
REAMER-valve seat cleaning	A-24138
SLEEVE-bearing & shaft installation	23136-1
SLEEVE-crankshaft bearing installation	24300
SLEEVE-seal protecting (crankcase)	24297
SLEEVE-seal (protecting)	24291
WRENCH-combination	A-24284
WRENCH-spanner	A-23696-A
Includes:	
PIN-clutch spanner (2)	23717-A

ALWAYS FURNISH MODEL AND SERIAL NUMBER WHEN ORDERING PARTS.



# VI Super Mini - SL



A - 68415-A

HDC - 44

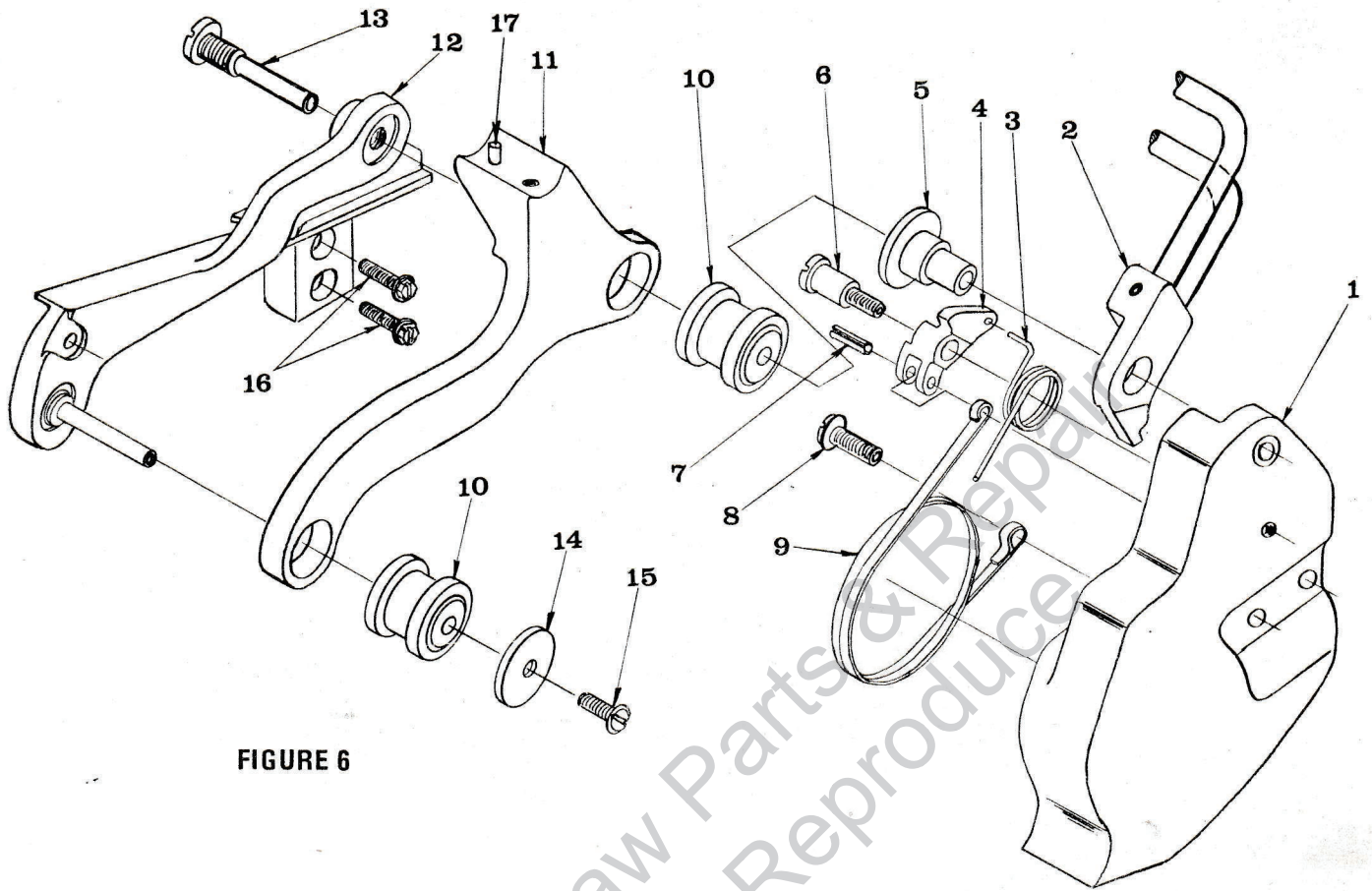
No.	Description	Part No.	Qty.	No.	Description	Part No.	Qty.
1	SHAFT-throttle	67362	1	19	BALL-check valve	†60051	1
2	SPRING-throttle return	†67376	1	20	SPRING-choke friction	†64238	1
3	SCREW-valve	†67372	3	21	GASKET-circuit	‡67367-A	1
4	VALVE-throttle	67363	1	22	NEEDLE-inlet	†64229	1
5	RING-screen retaining	†67360	2	23	SPRING-metering lever	†67378	1
6	SCREW-check valve	†67381	2	24	LEVER-metering	67383	1
7	JET-limiting	68461	1	25	PLATE-circuit	63199	1
8	SCREEN-fuel inlet	†64243	1	26	SCREW-circuit plate	67375	2
9	SCREW-fuel pump	67374	1	27	GASKET-metering diaphragm	†64231	1
10	COVER-fuel pump	67361	1	28	DIA PHRAGM-metering	†67371	1
11	GASKET-fuel pump	‡67368	1	29	COVER-metering diaphragm	64224	1
12	DIA PHRAGM-fuel pump	†67370	1	30	SCREW-metering cover	64689	4
13	STOP-throttle	67366	1	31	REPAIR KIT	93203	1
14	SHAFT-choke	67364	1	32	GASKET SET	†67369-A	1
15	NEEDLE-idle adjustment	67373	1		REPAIR KIT-check valve	65386	1
16	NEEDLE-mixture adjustment	†93202	2				
17	SPRING-needle adjusting	†67377	2				
18	VALVE-choke	67365	1				

† Indicates contents of Repair Kit #67384

‡ Indicates contents of Gasket Set



# MINI VI SL Supplement



**FIGURE 6**

No.	Description	Part No.	Qty.	No.	Description	Part No.	Qty.
1 *	DRIVECASE COVER	A-69535-2	1	10	ISOLATOR	68320-A	2
2 *	BRAKE LEVER & GUARD	A-69660	1	11	BRACKET, Handle Bar	68689-2	1
3 *	SPRING, Torsion	69553-A	1	12	BRACKET & PIN	A-69437	1
4 *	LEVER	69517-2	1	13	SCREW, Vibration Mount	69554	1
5 *	SUPPORT, Vibration Mount	69552	1	14	WASHER	68998-1	1
6 *	SCREW, Shoulder	69551	1	15	SCREW, Pan. Hd. (#10 - 32 x 5/16)	82175	1
7 *	PIN, Roll	67911	1	16	SCREW, Hex. Hd. (#10 - 32 x 5/8)	80704	2
8 *	SCREW, Pan. Hd. (1/4 - 20 x 5/8)	82258	1	17	PIN, Dowel	65601	1
9 *	BAND, Brake	69550	1				

**FOLLOWING ARE THE CHANGES ON FIG. 4 & FIG. 3 FOR XL-1 SL**

No.	Description	Part No.	Qty.
<b>FIG. 4</b>			
10	HANDLE BAR	A-69121-1	1
11	SCREW, Fill. Hd. (#10 - 32 x 1)	80041	1
	SCREW, Shoulder	65121	1
	GROMMET	65122	1
	SCREW, Set	82243	1
	GROMMET	69648	1
36	SPROCKET & DRUM	A-69436-3	1
46	CHAIN BRAKE	A-78222	1

**FIG. 3**

2	COVER, Air Filter	65097-7	1
---	-------------------	---------	---

**FOLLOWING ARE THE CHANGES ON FIG. 4 & FIG. 3 FOR SUPER MINI AO-SL**

No.	Description	Part No.	Qty.
<b>FIG. 4</b>			
9	HANDLE BAR	A-69121-1	1
10	SCREW, Fill. Hd. (#10 - 32 x 1)	80041	1
19	SCREW, Shoulder	65121	1
	GROMMET	65122	1
	SCREW, Set	82243	1
	GROMMET	69648	1
40	SPROCKET & DRUM	A-69436-3	1
42	CHAIN BRAKE	A-78222	1

**FIG. 3**

2	COVER, Air Filter	65097-7	1
---	-------------------	---------	---

\* Denotes parts of chain brake #A-78222

**ALWAYS FURNISH SAW MODEL AND SERIAL NUMBER WHEN ORDERING PARTS.**

**HOMELITE-TERRY  
TEXTRON**