

PARTS LIST

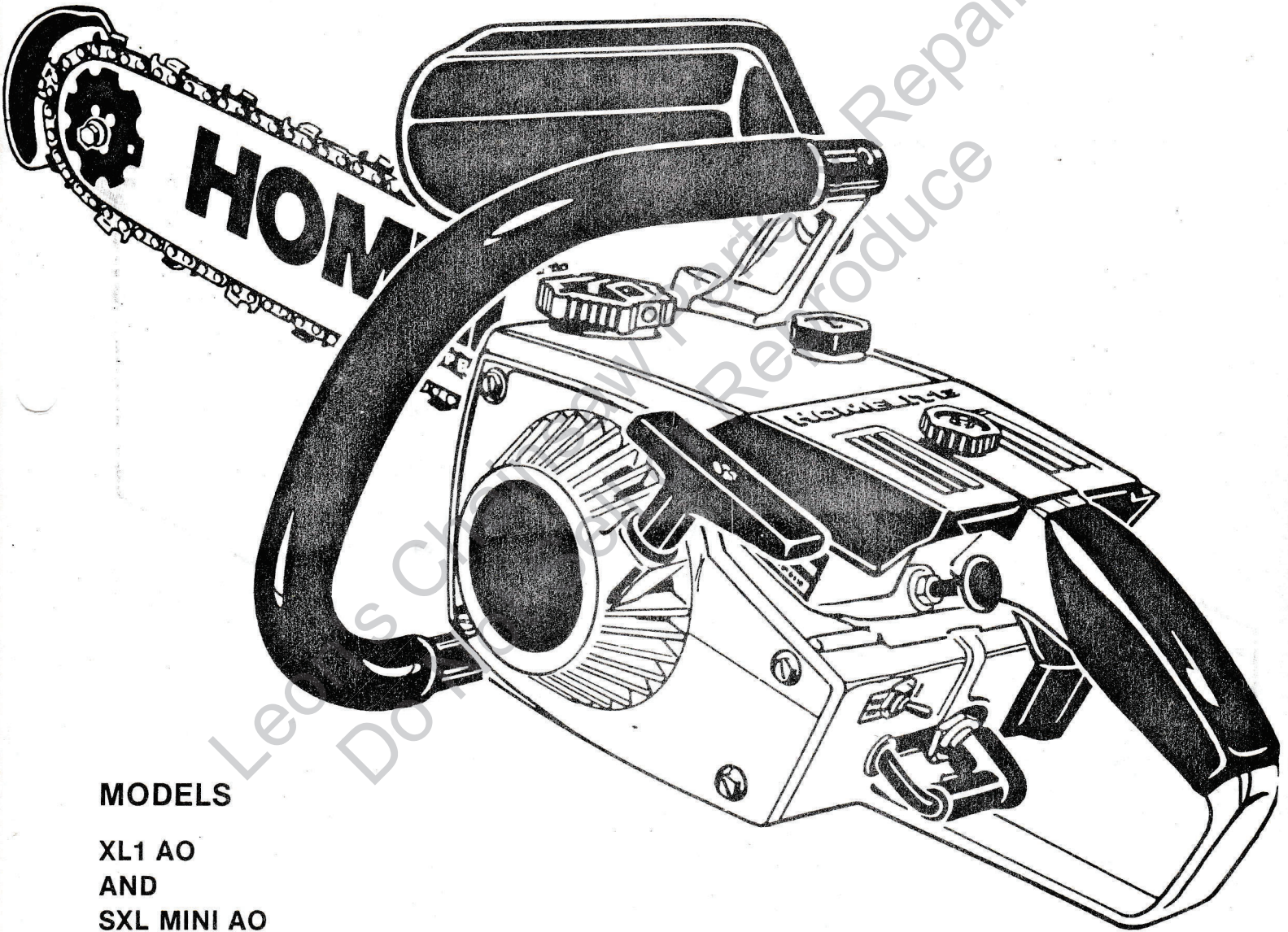
PART NO. 24522-AT REV-3

Printed in Canada

Price .35

HOMELITE®

CHAIN SAWS

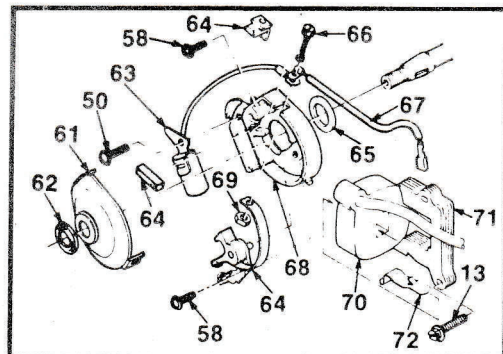
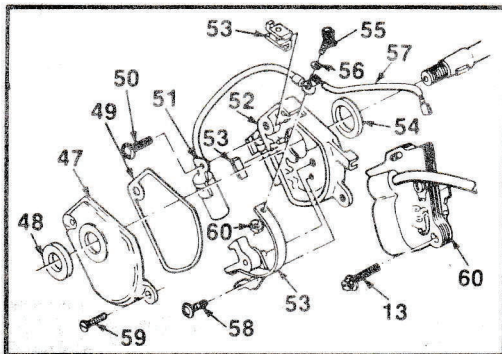
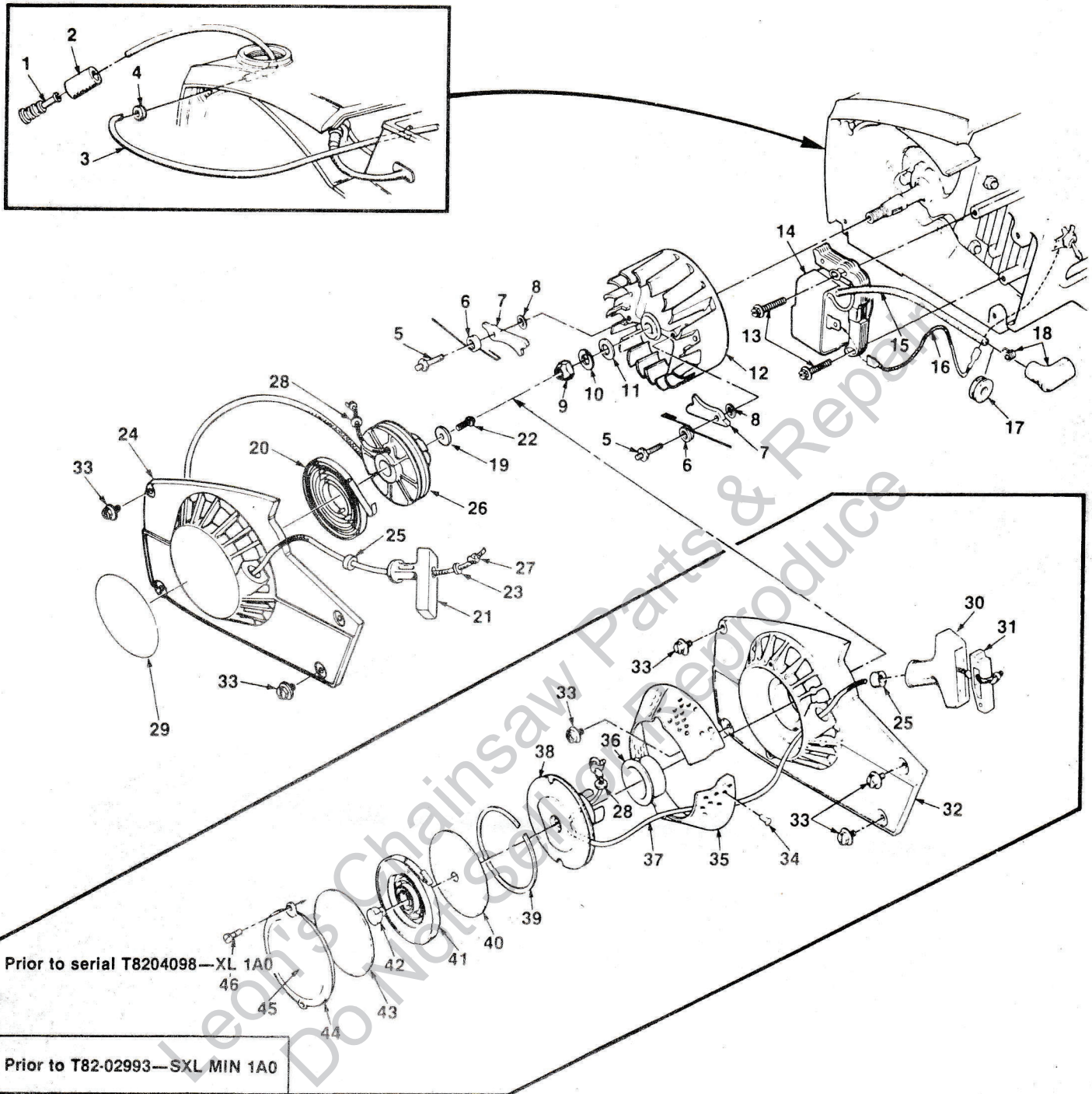


MODELS

XL1 AO
AND
SXL MINI AO

HOMELITE-TERRY **TEXTRON**

FIGURE 1



No.	Description	Part No.	Qty.	No.	Description	Part No.	Qty.
1	FILTER- Fuel (Note 1) Includes:	A-69923	1	57	LEAD GROUP- Primary (Point Ignition)	(W) 68712	1
2	FILTER- Felt	64083	1	58	SCREW- Pan 6-32 x 3/8	80571	2
3	LINE- Fuel Includes:	A-68053T	1	59	SCREW- Cover mounting (Point Ignition)	(W) 68715	2
4	GROMMET	68046	1	60	COIL & CORE- (Point Ignition)	(W) 68716	1
5	STUD- Starter pawl	65109	2	61	COVER- Breaker box (Point Ignition)	(P) A-65210-A	1
6	SPRING- Starter pawl	65120	2		Includes:		
7	PAWL- Starter	(Note 2) 94336	2	62	SEAL- Breaker box cover	(P) 65211	1
8	WASHER- Lock 10	83046	2	63	CONDENSER- (Point Ignition)	(P) 65286	1
9	NUT- Hex (5/16 - 24)	81117	1	64	POINTS- Breaker (Point Ignition)	(P) A-65203-A	1
10	WASHER- Lock	83002	1		Includes:		
11	WASHER- Flat 5/16	84065-1	1	65	SEAL- Breaker box	(P) 65209	1
12	ROTOR- Magneto	(P) 65288-A	1	66	SCREW- Hex 6-32 x 7/16	(P) 68700	1
	ROTOR- Magneto	(W)* 68701	1	67	LEAD GROUP- Primary (Point Ignition)	(P) 65291	1
13	SCREW- Hex washer hd 8-32 x 3/4	82248	2	68	BOX- Breaker (Point Ignition)	(P) 65206-A	1
14	MODULE & CORE- (Solid State) Includes:	A-94111	1	69	NUT- (Point Ignition)	65207	1
	LEAD- High tension	65205	1	70	COIL- Ignition (Point Ignition)	(P) 68256	1
16	LEAD- Ground (Point Ignition)	A-63939	1	71	CORE- Coil (Point Ignition)	(P) 68255	1
	LEAD- Ground (Solid State)	A-94625	1	72	RETAINER- Coil	(P) 68257	1
17	GROMMET- Hi tension lead	75036	1				
18	TERMINAL- Spark plug	A-33055	1				
	KIT- Starter housing (note 3) Includes:	A-95930-1	1				
19	WASHER- Retaining	63606-1	1				
20	SPRING- Rewind	69217	1				
21	GRIP- Starter rope	70211	1				
23	WASHER- Flat	84025	1				
24	HOUSING- Starter & bushing Includes:	A-95820-1	1				
	BUSHING- Rope	65185	1				
26	PULLEY- Starter	94562-A	1				
27	ROPE- Starter 434"	A-93874-A	1				
	Includes:						
28	WASHER	93862	1				
29	DECAL mini	78215	1				
30	GRIP- Starter rope Includes:	A-69962-B	1				
	INSERT- Rope retaining	70018-A	1				
32	HOUSING- Rewind starter (See Note 3)						
33	SCREW- Hex. 10-32 x 5/8	80704	4				
34	STUD- Drive 2	67191	3				
35	SCREEN- Air inlet	65189	1				
36	BUSHING- Starter cup	68244	1				
37	ROPE- Starter 42" (4)	68528	1				
38	PULLEY & CUP- Starter	A-65170	1				
39	RING- Shield retaining	65125	1				
40	SHIELD- Spring (Outer)	65114	1				
41	SPRING- Rewind	65107	1				
42	LOCK- Spring	65102	1				
43	SHIELD- Spring (Inner)	65113	1				
44	COVER- Rewind starter	65095-2	1				
45	DECAL- Starter cover XL-1	79063	1				
46	SCREW- Pan 8-32 x 3/8	80577	2				
47	COVER- Breaker box (Point ignition) (W) Includes:	A-69507	1				
	SEAL- Breaker box cover	(W) 68773-1	1				
49	GASKET- Breaker box cover	(W) 69512	1				
50	SCREW- Pan 6-32 x 1/2	80630	1				
51	CONDENSER- (Point Ignition)	(W) 68711	1				
52	BOX- Breaker (Point Ignition)	(W) 69508	1				
53	POINTS- Breaker (Point Ignition) Includes:	(W) A-68710	1				
	SEAL- Felt	(W) 68705	1				
	WASHER- Thrust (Not shown)	(W) 28028	A/R				
	LOCK- Breaker arm (Not shown)	(W) 28008	1				
55	SCREW- Hex 6-32 x 1/2 (Point Ignition)	(W) 68700	1				
56	WASHER- Lock 6	83004-1	1				

NOTE 1: Units with A-63920 Filter must use 64182 Washer.

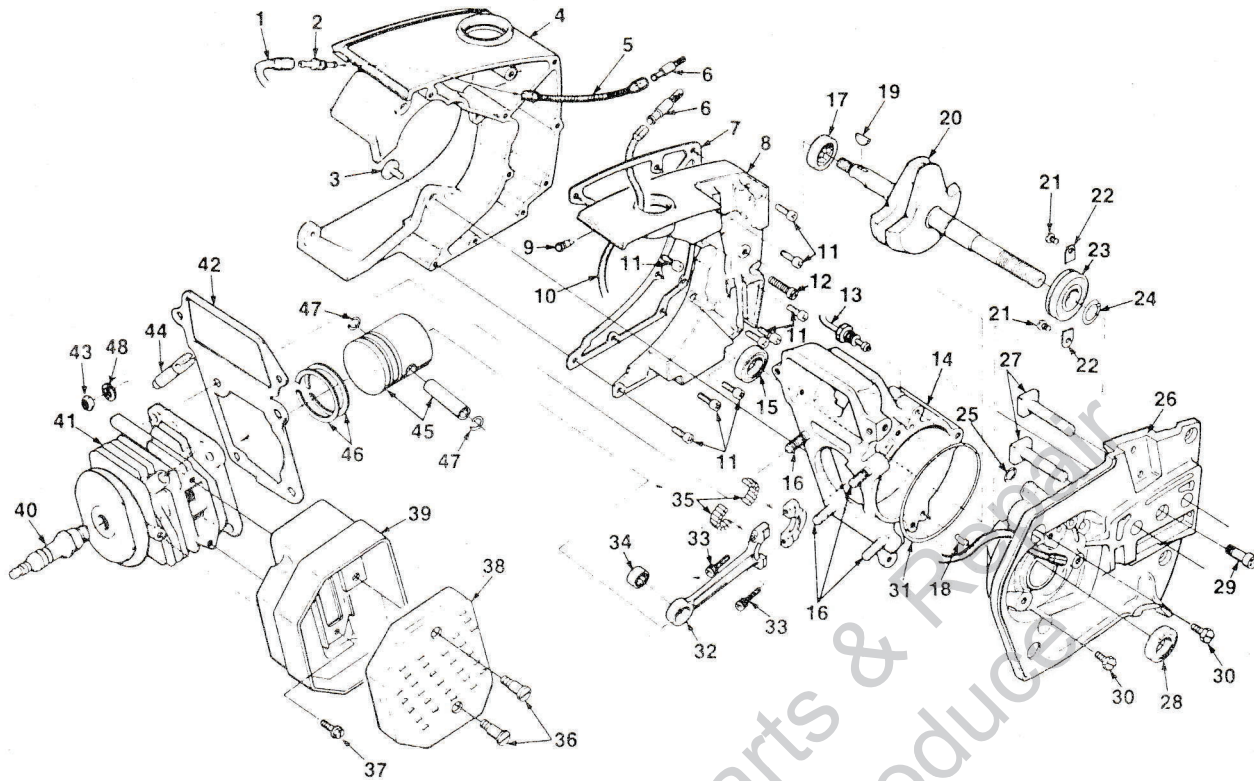
NOTE 2: Units with magnesium starter housing requires 65108 Starter Pawl.

NOTE 3: When new housing is required, use A-95930 Conversion Kit.

Complete Magneto must be (W) Wico or (P) Phelon. Phelon and Wico parts are not individually interchangeable.

*Wico rotor used with solid state ignition.

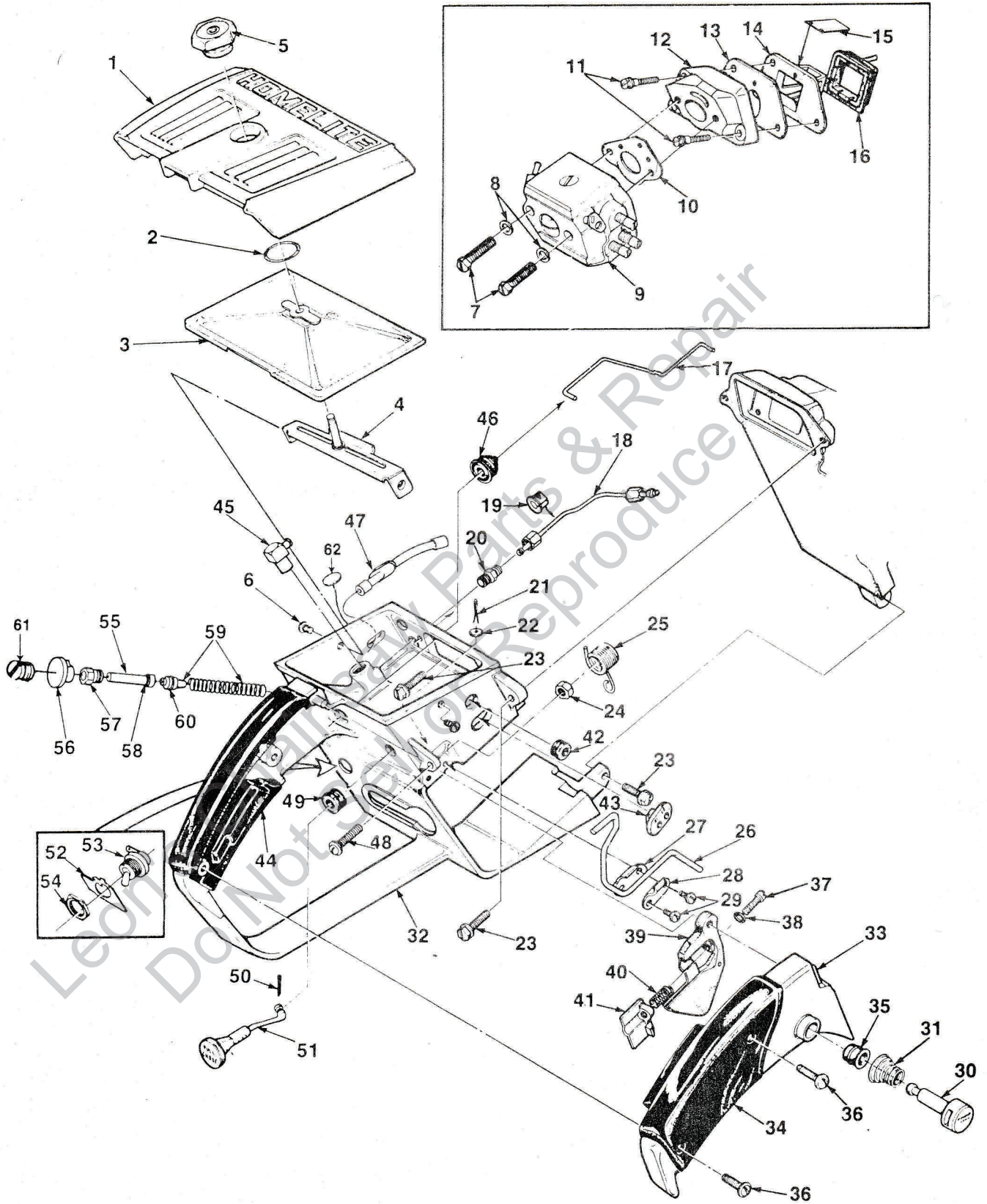
FIGURE 2



No.	Description	Part No.	MINI	XL-1	Qty.	No.	Description	Part No.	MINI	XL-1	Qty.
1	LINE - Oil	65137	x		1	29	SCREW - Fil., Drivecase Retainer	65157-A	x	x	1
1	LINE - Oil	93112-06	x		1	30	SCREW - Hex, 12-24 x 5/8	80676	x	x	3
2	FITTING - Oil Line	65138-A	x		1	31	"O" RING	65127	x	x	1
3	SCREW - Retaining	65321-A	x	x	3	2	ROD - Connecting	A-68051	x	x	1
4	TANK - Fuel & Oil	A-78419	x	x	1		Includes:				
5	LINE - Oil (Pick Up)	58340-B	x	x	1	33	SCREW - Cap. Hex Soc. Hd.	69919	x	x	2
6	FILTER - Oil	A-64293	x		2	34	BEARING - Needle	68512	x	x	1
6	FILTER - Oil	A-64293	x		1	35	BEARING - Needle (Set of 28)	A-65009	x	x	1
7	GASKET - Fuel & Oil Tank	65046	x	x	1		MUFFLER - Complete	A-68254	x	x	1
8	COVER - Fuel & Oil Tank	A-69832-AT	x	x	1		Includes:				
	Includes:					36	SCREW - Shoulder	64133-A	x	x	2
9	RIVET - (Note 1)	65889	x	x	1	37	SCREW - Hex, 10-32 x 1/2	80648	x	x	3
10	LINE - Oil (Note 1)	70309-22	x	x	1	38	CAP - Muffler	68253-1	x	x	1
11	SCREW - Fil., 8-32 x 5/8	82146	x	x	9	39	BODY - Muffler	A-65152-2	x	x	1
12	SCREW - Fil., 8-32 x 1.7/16	82187	x	x	1	40	SPARK PLUG	78275	x	x	1
13	LINE - Oil	A-94354	x		1	41	CYLINDER - 1-9/16 Dia.	A-78542	x		1
13	LINE - Oil	A-69334	x		1	41	CYLINDER - 1-9/16 Dia.	A-78418		x	1
14	CRANKCASE	A-65202-A	x	x	1		Includes:				
	Includes:					42	GASKET - Cylinder	65018	x	x	1
15	SEAL	65019	x	x	1	43	NUT - Hex, 1/4-28	81065-2	x	x	4
16	STUD - Cylinder	69438	x	x	4	44	VALVE - Compression Release	A-65184	x		1
17	BEARING - Roller	65179	x	x	1	45	PISTON & PIN	A-78416	x	x	1
18	PIN - Dowel	65153	x	x	1		Includes:				
19	KEY - Woodruff	65126	x	x	1	46	PISTON RING	68508	x	x	2
20	CRANKSHAFT - Point Ignition	65006-2	x	x	1	47	RING - Piston Ring Retaining	64813	x	x	2
20	CRANKSHAFT - Solid State Ignition	94777	x	x	1	48	WASHER - Lock	83009	x	x	4
21	SCREW - Bearing Retaining	70306	x	x	2						
22	WASHER - Lock	63905	x	x	2						
23	BEARING - Ball	65044-S	x	x	1						
24	RING - Retaining	65045	x	x	1						
25	"C" RING	59074	x	x	1						
26	DRIVECASE	A-69807-A	x		1						
26	DRIVECASE	A-78415		x	1						
	Includes:										
27	BOLT - Guide Bar	65025	x	x	2						
28	SEAL	65019	x	x	1						

NOTE 1: Oil Line 70309-22 not used in units built with single oil line system. Install 65889 Rivet in oil line hole.

FIGURE 3



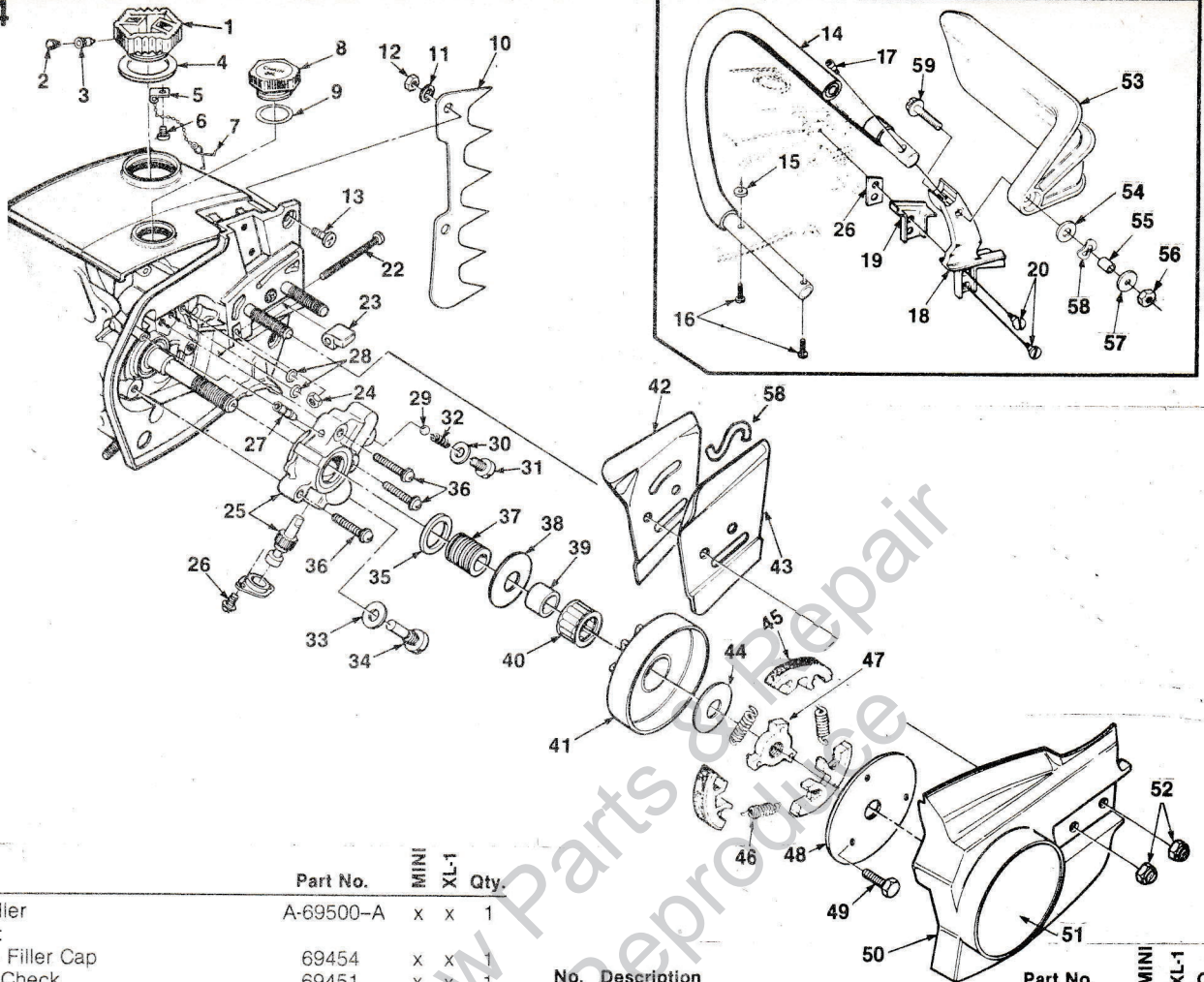
ALWAYS FURNISH MODEL AND SERIAL NUMBERS WHEN ORDERING PARTS.

FIGURE 3

No.	Description	Part No.	MINI	XL-1	Qty.	No.	Description	Part No.	MINI	XL-1	Qty.
1	COVER - Air Filter	65096-6	x	x	1	32	HANDLE - Throttle (See Note 3)	A-65215-FT	x		1
2	RING - Retaining	58319-A	x	x	1			A-68267-B	x		1
3	FILTER ELEMENT - Air	A-65178	x	x	1		Includes:				
4	BRACKET - Air Filter Cover	A-93138-A	x	x	1	33	COVER - Throttle Handle	68852-2	x		1
	Includes:						COVER - Throttle Handle				
5	NUT - Cover Mounting (1/4-20)						(See Note 2)				
	(Note 1)	A-65272-2	x	x	1	34	GRIP - Throttle Handle Cover	65042-3B	x		1
6	SCREW - Pan, 8-32 x 3/8	82327	x	x	2	35	BUSHING	68759	x		1
7	SCREW - Hex, 10-32 x 1 5/8	82165	x	x	2	35	BUSHING	67752	x		1
8	WASHER - Lock, no. 10	83046	x	x	2	36	SCREW - Pan, 8-32 x 1/2	59064		x	1
9	CARBURETOR - (HDC-64)	A-68415-B	x	x	1	37	SCREW - Pan, 6-40 x 1	80560	x	x	2
10	GASKET - Carburetor	65016	x	x	1	38	"O" RING	82198	x	x	1
11	SCREW - Shoulder	64349-A	x	x	A	39	TRIGGER - Throttle	65260	x	x	1
12	MANIFOLD - Intake	A-65154-1A	x	x	1	40	SPRING - Throttle Stop	65031-A	x	x	1
13	GASKET - Reed Valve Seat	65014-A	x	x	1	41	STOP - Throttle Adjustment	65188	x	x	1
14	SEAT - Reed Valve	65010	x	x	1	42	GROMMET - Idle Adjusting	65147-A	x	x	1
15	REED - Valve	65012-A	x	x	4	43	GROMMET - "Hi-Lo"	*68197	x	x	1
16	RETAINER - Reed Valve	65011-A	x	x	1		GROMMET - "Hi-Lo"	*68196	x	x	1
17	ROD - Throttle	65056	x	x	1		LINE - Fuel (Shown on Fig. 1)	*A-68053-T	x	x	1
18	LINE - Oil	A-94354	x		1		Includes:				
	Includes:						GROMMET - (Fig. 1)	68046	x	x	1
	NUT - Compression	25302	x		1	44	GRIP - Throttle Handle	68770	x		1
19	GROMMET - Oil Line	65085	x		1	45	VALVE - Check (Inlet) 90°	*A-65076	x	x	1
19	GROMMET - Oil Line	65085-1		x	1	46	BOOT - Throttle Rod	*67634	x	x	1
20	VALVE - Check (Outlet)	A-65077	x		1	47	LINE - Oil	65137	x		1
21	PIN - Cotter, 1/16 x 1/2	86301	x	x	1	48	SCREW - Round Hd., 10-32 x 7/8	80040	x		1
22	WASHER - Felt	63290	x	x	1	49	GROMMET - Choke	64862	x	x	1
23	SCREW - Hex, 12-24 x 5/8	80676	x	x	3	50	PIN - Cotter, 1/32 x 1/2	86324	x	x	1
24	NUT - Hex, 10-32	81010-1	x		1	51	ROD - Choke	65072-1	x	x	1
25	SPRING - Release Valve	65174	x		1	52	PLATE - "On-Off"	70834	x	x	1
26	LEVER - Release	65173	x		1	53	SWITCH - Grounding	A-63938	x	x	1
27	PLATE - Lever	65092	x		1		Includes:				
28	CLAMP - Lever	65093	x		1	54	NUT - Lock	72084-A1	x	x	1
29	SCREW - Pan, 6-32 x 3/8	80571	x		2	55	PLUNGER - Oil Pump	A-68061-A	x		1
30	PIN - Trigger Latch	65171-A	x		1		Includes Nos. 58, 59 & 60				
30	PIN - Trigger Latch	58924-4		x	1	56	BUTTON - Oil Pump	65084	x		1
31	SPRING - Throttle Latch	64677	x		1	57	NUT - Plunger	65082	x		1
31	SPRING - Throttle Latch	58405	x		1	58	"O" RING	59074	x		1
						59	PLUNGER - Pump	A-67235-A	x		1
							Includes:				
						60	"O" RING	58406	x		1
						61	PLUG	*69332		x	1
						62	PLUG	*53733		x	1

NOTE 1: Some Units use A-65272 nut with 1/4 - 28 thread.
NOTE 2: 65042-3B Cover for Throttle Handle is to be used for units without Rubber Grips.
NOTE 3: A-65215-FT includes items shown with an asteric (*).

FIGURE 4



No.	Description	Part No.	MINI	XL-1	Qty.
1	CAP - Fuel Filler	A-69500-A	x	x	1
Includes:					
2	FILTER - Filler Cap	69454	x	x	1
3	VALVE - Check	69451	x	x	1
4	GASKET - Fuel Filler Cap	69501	x	x	1
5	CHAIN - Bead	69502	x	x	1
6	SCREW - Pan Hd., Plastite, 6 x 1/4	82256	x	x	1
7	RETAINER - Filler Cap	69503	x	x	1
8	CAP - Oil Filler (Vented)	A-65284-B	x	x	1
Includes:					
	VALVE - Check (Not Shown)	69451	x	x	1
9	GASKET - Oil Cap	69834	x	x	1
10	KIT - Spiked Bumper (Accessory)	A-65181	x	x	1
Includes:					
11	WASHER - Lock, no. 10	83006-1	x	x	2
12	NUT - Hex, 10-32	81010-1	x	x	2
13	SCREW - Flat, 10-32 x 5/8	80035	x	x	2
14	HANDLE BAR - Flush Cut (Note 1)	A-65165-3T	x		1
14	HANDLE BAR - Flush Cut (Note 1)	A-69675	x		1
Includes:					
15	WASHER	69890	x	x	1
16	SCREW - 10-32 x 7/8	82268	x		2
16	SCREW - 10-32 x 7/8	80041		x	2
17	SCREW - 10-32 x 7/8	82169	x		1
17	SCREW - 10-32 x 7/8	80041		x	1
18	BRACKET - Handle Bar (Flush Cut)	65035-1C	x		1
18	KIT - Handle Bar Bracket (Flush Cut)	A-70307-B	x		1
Includes:					
19	MOUNT - Shock	65111	x		1
20	SCREW - Shoulder	64613-A	x		2
20	SCREW - Shoulder	80704		x	2
21	PLATE - Handle Bar Bracket	65032	x		1
22	SCREW - Guide Bar Adjusting	65175-A	x	x	1
23	PIN - Bar Adjusting	65112-1	x	x	1
24	NUT - Lock, 10-32	81206	x	x	1
25	PUMP - Automatic Oil	A-65212-B	x	x	1
Includes:					
26	SCREW - Pan, 4-40 x 1/4	80919	x	x	2
27	FITTING - Tube	94619	x	x	1
28	"O" RING	59074	x	x	2
29	BALL - Check (Rubber)	65225	x	x	1
30	GASKET - Check Valve	65144	x	x	1
31	CAP - Check Valve	65143	x	x	1
32	SPRING - Check Valve	65017	x	x	1

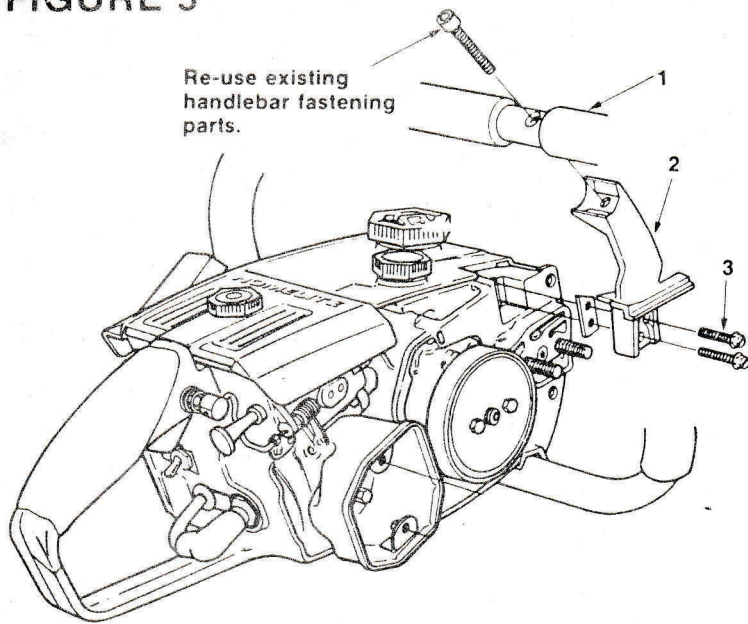
No.	Description	Part No.	MINI	XL-1	Qty.
33	GASKET - Cam Screw	65145	x	x	1
34	SCREW - Cam	65136	x	x	1
35	SEAL - Oil Pump	65142	x	x	1
36	SCREW - Pan, 8-32 x 3/4	80567	x	x	3
37	GEAR - Worm	65047-A	x	x	1
38	WASHER - Thrust (Outer)	65064	x	x	1
39	RACE - Inner	69423	x	x	1
40	BEARING - Needle	64333	x	x	1
41	SPROCKET & DRUM - (Note 2)	A-78911	x	x	1
42	PLATE - Guide Bar (Inner)	70397	x	x	1
43	PLATE - Guide Bar (Outer)	70398	x	x	1
44	WASHER	58833	x	x	1
45	SHOE	79073	x	x	3
46	SPRING	96338-A	x	x	3
47	SPIDER	79115	x	x	1
48	WASHER	96449	x	x	1
49	SCREW	88041	x	x	3
50	COVER - Drive Case	65131-15	x	x	1
51	DECAL - Drive Case Cover	78214	x		1
52	NUT - HEX 5/16-18	81196	x	x	2
53	HAND GUARD*	95898	x	x	1
54	WASHER - Belleville*	95935	x	x	1
55	SPACER	95939	x	x	1
56	NUT - Hex 12/24*	81325	x	x	1
57	WASHER*	95935	x	x	1
58	WASHER - Spring*	95694	x	x	1

* A-79004 Hand Guard Kit (Items 53 to 58)

NOTE 1: A-69675, Handlebar, and 82268, screw, can be used in a combination with rubber pad 65124, grommet 65122, and screw, shoulder 65121.

NOTE 2: Some sprocket & drums may use 65746-B race and 64124 bearing.

FIGURE 5



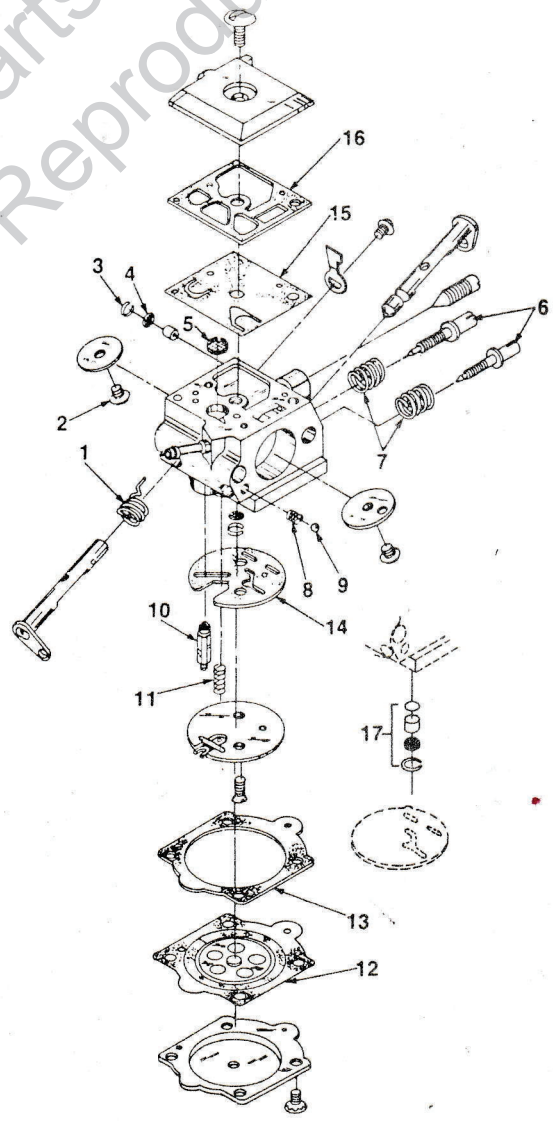
No.	Description	Part No.	MINI	XL-1	Qty.
1	HANDLE BAR - (Wrap Around)	A-68469-3	x	x	1
2	BRACKET - Handle Bar W/A	A-70303-1	x	x	1
3	SCREW - (no. 10-32 x .625)	80704	x	x	2

CARBURETOR

HDC-64

A-68415-B

Leon's Chainsaw Parts & Repair
Do Not Sell or Reproduce



Repair Kit	93203-A	(1-16)
Gasket/Diaphragm	94701	(12-16)
Check Valve Repair	93910-A	(17)