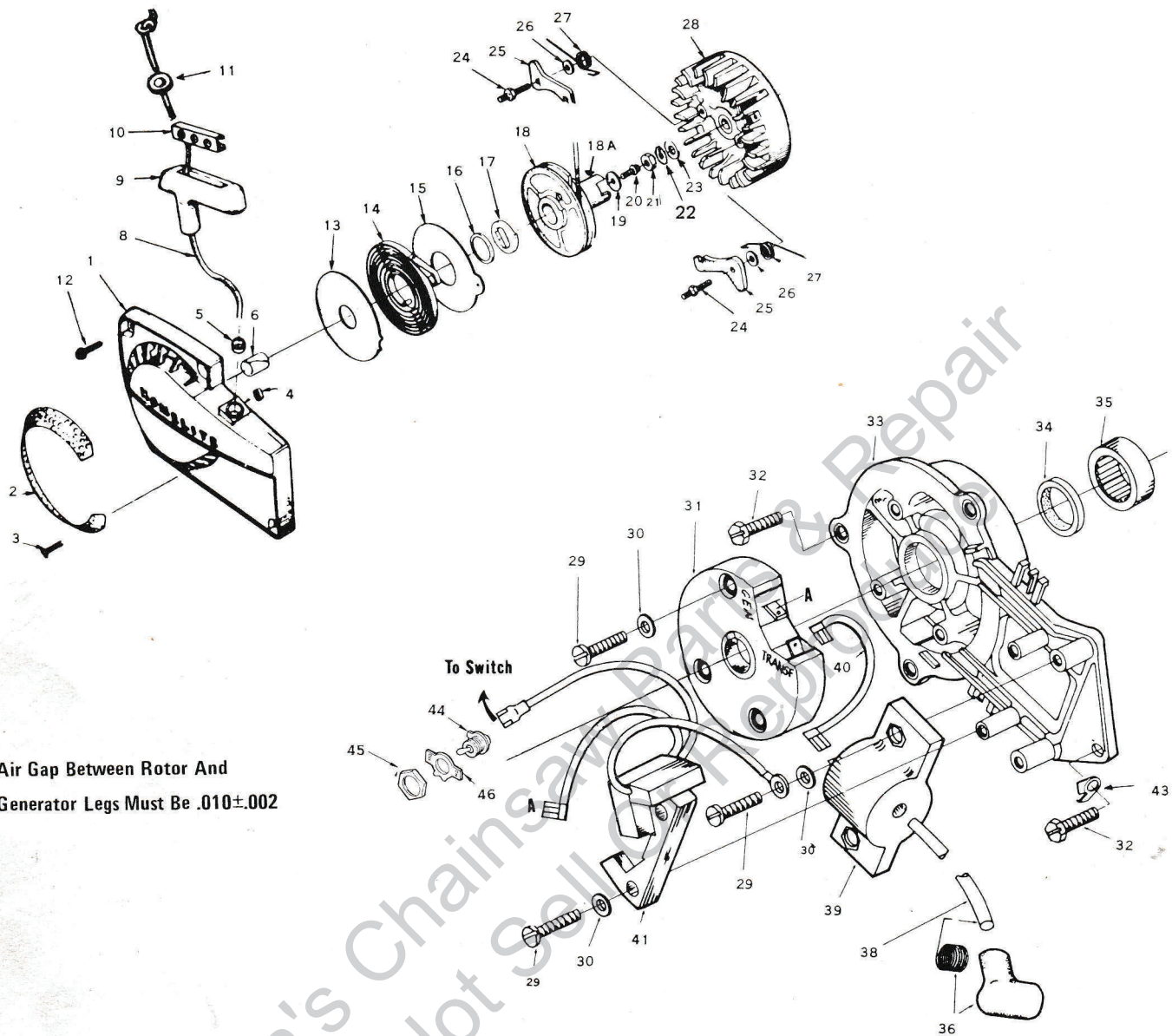


HOMELITE SXL-922



Air Gap Between Rotor And
Generator Legs Must Be $.010 \pm .002$

FIGURE 1

No.	Description	Part No.	Qty.	No.	Description	Part No.	Qty.
1	HOUSING fan	A-64504-C	1	23	WASHER flat 3/8	84010	1
2	INCLUDES, screen-air	64420-1	1	24	STUD-shoulder - pawl	58757-E	2
3	Studs Drive 2 x 1/4	67191	4	25	PAWL - starter	58756	2
4	Bushing, Rewind	65830	1	26	WASHER	70901	2
5	Bushing - rope	67177	1	27	SPRING-pawl	65375-2	2
6	Bushing-starter post	64443	1	28	ROTOR magneto	67165	1
8	ROPE starter	58806	1	29	SCREW pan head 8-32 x 3/4	82178	7
9	GRIP-rope	12624	1	30	WASHER lock (no. 8)	83022	7
10	INSERT	70018-A	1	31	MODULE ignition	67162	1
11	WASHER	78093	1	32	SCREW hex head 1/4 - 20 x 5/8	80048	4
12	SCREW-hex head 12 - 24 x 5/8	80676	4	33	BACK plate includes:	A-67618-A	1
13	SHIELD (inner)	63566	1	34	Seal	12282-A	1
14	SPRING - rewind	63268-A	1	35	Bearing rollers	63195	1
15	SHIELD - (outer)	63565-A	1	36	TERMINAL, spark plug	A-33055	1
16	BUSHING spring lock	64400	1	38	LEAD-high tension	67166	1
17	LOCK spring	64049-B	1	39	COIL - transformer	67164	1
18	PULLEY starter	64398-1A	1	40	LEAD transformer	67167	1
18A	CUP starter	64399	1	41	CORE & Generator Coil	67163	1
19	WASHER retaining	58763	1	43	WASHER, tab	67875-1	1
20	SCREW-hex hd 10 - 32 x 1/2	80648	1	44	SWITCH - Toggle	A-57650-3A	1
21	NUT hex (3/8 - 24)	81124	1	45	INCL. Nut	72084-A1	1
22	WASHER, lock	83102	1	46	PLATE - Indicating	70839	1

ALWAYS FURNISH MODEL AND SERIAL NUMBER WHEN ORDERING PARTS

HOMELITE SXL-922

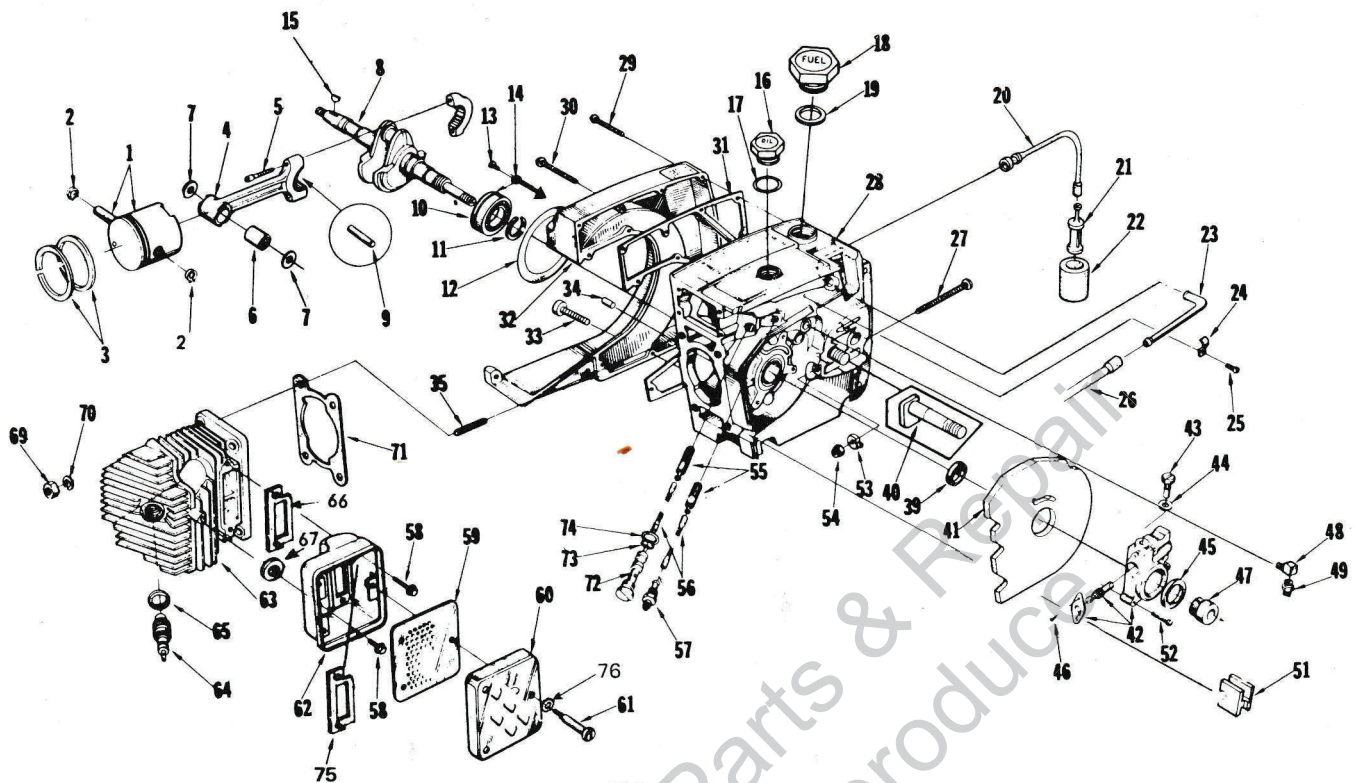


FIGURE 2

No.	Description	Part No.	Qty.	No.	Description	Part No.	Qty.
1	KIT, PISTON 2" dia.	A-78118	1	34	PIN-dowel	63621	1
2	Includes: RING-piston pin retaining	64742	2	35	STUD	69438	4
3	PISTON RING 2" dia.	55038	2	39	SEAL	12282-A	1
4	ROD-connecting	A-69658-A	1	40	BOLT-guide bar	67158	2
5	Includes: SCREW-socket, 8-32 x 9/16	69919	2	41	SHIELD-sawdust	64156-A	1
6	BEARING-needle	69638	1	42	PUMP-automatic oil	A-68265-A	1
7	WASHER-thrust	68010	2	43	Includes: SCREW-cam	64102-A	1
8	CRANKSHAFT	67168-3	1	44	GASKET-cam screw	59736	1
9	BEARING-needle (28 rollers)	A-69056	1	45	SEAL-felt	59926	1
10	BEARING-ball	58190-S	1	46	SCREW-pan, 4-40 x 1/4	80919	2
11	RING-retaining	58319-A	1	47	WORM-gear	59675	1
12	"O" RING	67559	1	48	CONNECTOR-elbow	31734	2
13	SCREW-bearing retaining	70306	2	49	FITTING-tube	65696	1
14	WASHER-lock	59705	2	51	GROMMET-oil line	65357	1
15	KEY	75078	1	52	SCREW-pan, 8-32 x 3/4	80567	3
16	CAP-oil filler	A-65284-AT	1	53	PIN-guide bar adjusting	93039	1
17	Includes: Gasket VALVE-check (not shown)	69834	1	54	NUT-flexloc, 1/4-20	81204	1
18	CAP-fuel filler	A-69500-A	1	55	FILTER-oil	A-64293	2
19	Includes: GASKET VALVE-check (not shown)	69501	1	56	LINE-oil pick-up	64356	2
20	LINE-fuel (flexible)	65593-A	1	57	CONNECTOR-oil filter	65695	1
21	FILTER-fuel	A-69923	1	58	SCREW-hex, 1/4 - 20 x 5/8	78423	3
22	Includes: FILTER-fuel	64083	1	59	BÄFFLE-muffler	65633	1
23	CONNECTOR-fuel line	67080	1	60	CAP-muffler	69374-1T	1
24	CLAMP-fuel line	65597-1	1	61	SCREW-shoulder	68480	3
25	SCREW-pan, 6-32 x 5/16	80605	1	62	BODY-muffler incl. item 75	A-78524	1
26	LINE-fuel	65-B	1	63	CYLINDER-2" bore Incl. Item 71	A-78151	1
27	SCREW-guide bar adjusting	63367	1	64	SPARK PLUG	78270	1
28	CRANKCASE & TANK	A-68023-T	1	65	Includes: GASKET	25038	1
29	Includes: SCREW-fil, 8-32 x 5/8	82146	6	66	GASKET, muffler	78098	1
30	SCREW-fil, 8-32 x 2-3/16	82155	8	67	WASHER, muffler	84004	1
31	GASKET-fuel tank	67159	1	69	NUT-hex, 1/4-28	81065-2	4
32	COVER-fuel tank	67153-2	1	70	WASHER-lock, 1/4	83009	4
33	SCREW-fil, 8-32 x 1 3/4	82147	1	71	GASKET-cylinder	63778-1	1
				72	TUBE-oil line	63452-A	1
				73	"O" RING	58406	1
				74	GASKET-oil line tube	63751	1
				75	PLATE-muffler body	69839	1
				76	WASHER	78312	2

ALWAYS FURNISH MODEL AND SERIAL NUMBER WHEN ORDERING PARTS.

HOMELITE SXL-922

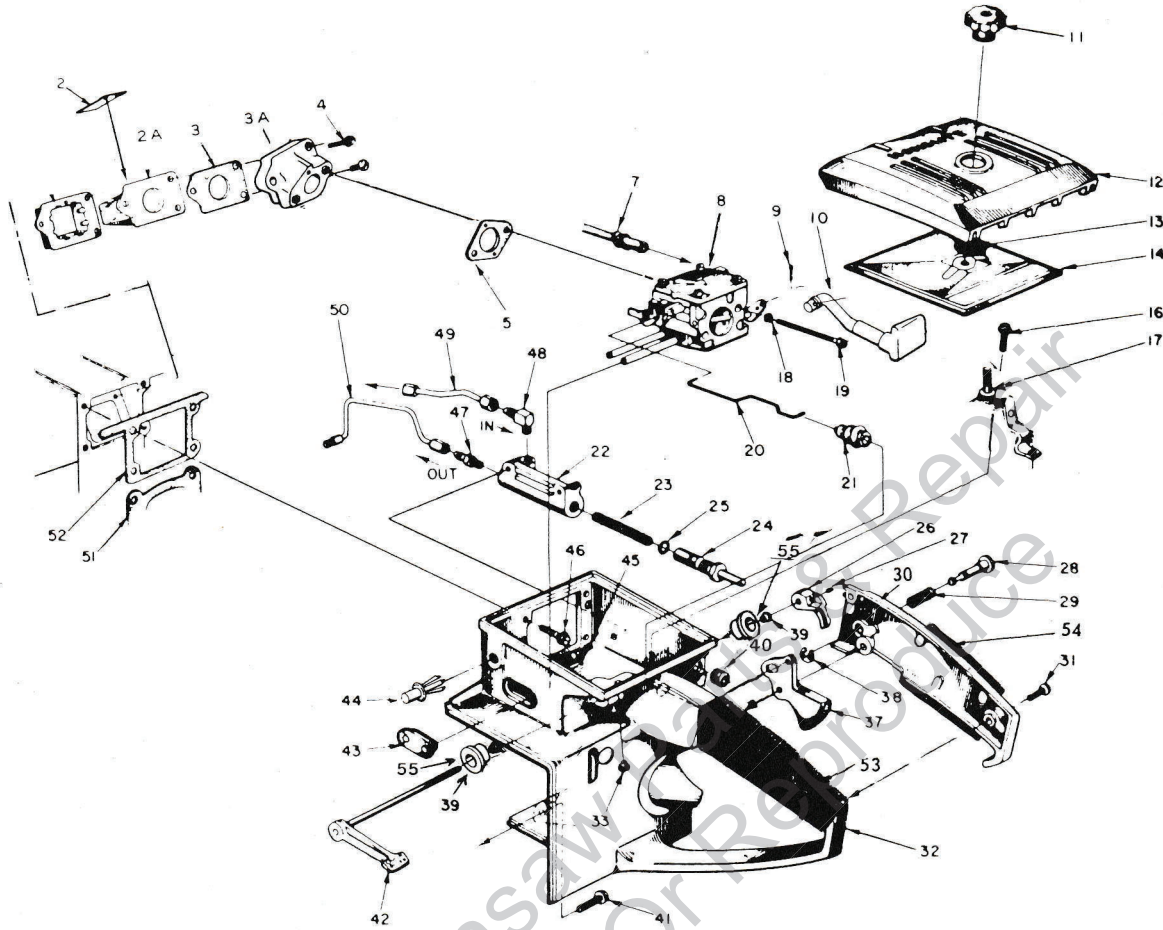
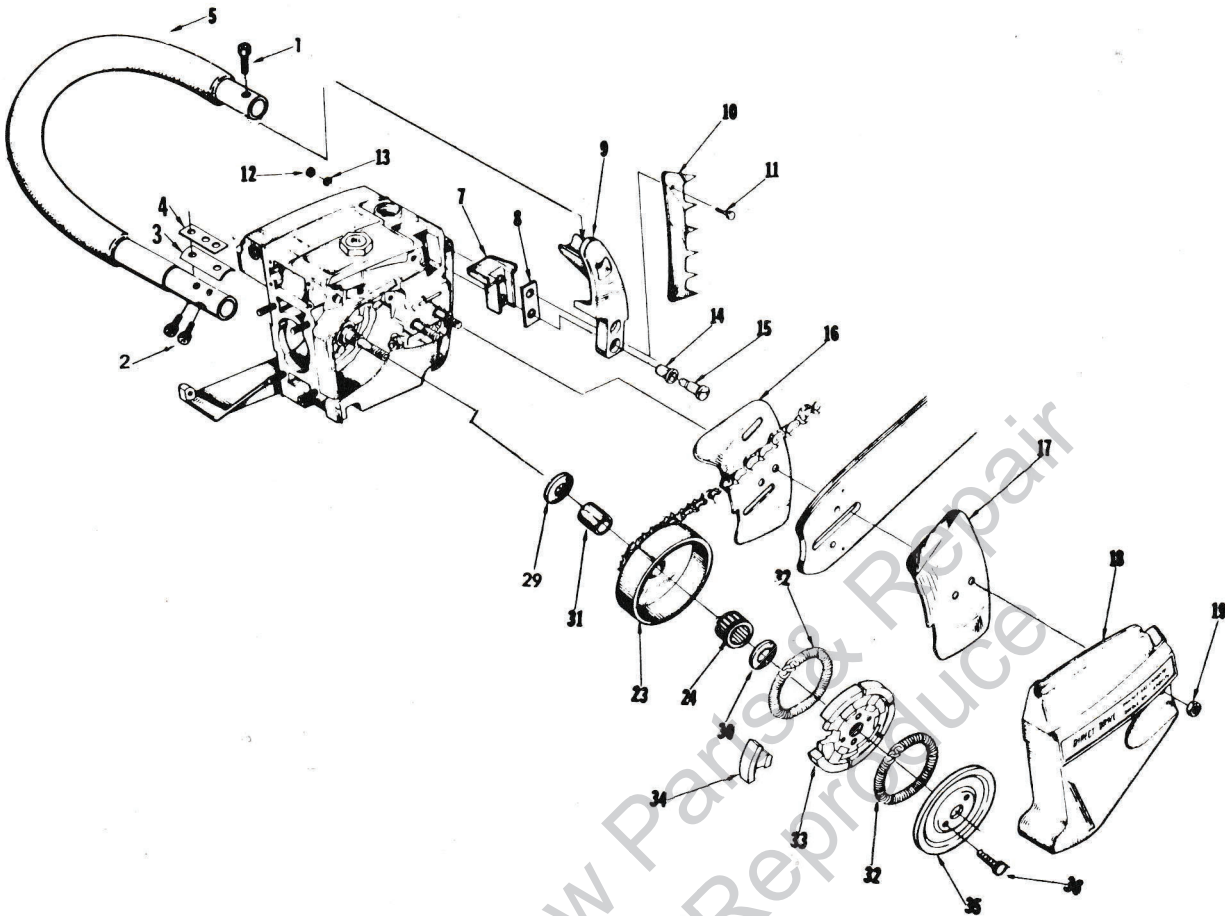


FIGURE 3

No.	Description	Part No.	Qty.	No.	Description	Part No.	Qty.
1	RETAINER - reed valve	63370-A	1	26	LEVER - oiler	63280-2A	1
2	VALVE - reed	63166-A	4	27	Includes SCREW - 10-32 x 1/4	80350	1
2A	SEAT - reed valve	63371-B	1	28	PIN - throttle lock	58924-4	1
3	GASKET - seat	65483	1	29	SPRING - lock	58405	1
3A	SPACER - reed valve seat	A-67460-1	1	30	COVER - throttle handle	A-78115	1
4	SCREW	82196	3		Includes: BUSHING - pin	59064	1
5	GASKET - carburetor	67540	1	31	SCREW - pan, 8-32 x 1/2	80560	2
7	LINE - fuel	65718-B	1	32	HANDLE - throttle	A-68025AT	1
8	CARBURETOR,	A-78272	1	33	Includes: BUMPER - rubber	56298	1
9	PIN - cotter	86324	1	37	THROTTLE - trigger	58859	1
10	ROD - choke	67201-1	1	38	RING - retaining	58409	1
11	NUT - cover mounting	A-67639	1	39	BUSHING	69670	2
12	COVER - air filter	A-69414-2	1	40	GROMMET	64862	1
13	RING - retainer	58319-A	1	41	SCREW - hex, 12-24 x 7/8	80891	1
14	FILTER ELEMENT - air	69880	1	42	LEVER - oiler w/shaft	A-63327	1
16	SCREW - hex, 12-24 x 1/2	80821	1	43	GROMMET	78140	1
17	BRACKET, air filter	A-63339A	1	44	PLUG, Plastic	53572	1
18	WASHER - lock, No. 10	83046	2	45	SCREW - hex, 8-32 x 1/2	80983	2
19	SCREW - hex, 10-32 x 1-7/8	82179	2	46	SCREW - hex, 12-24 x 5/8	80676	4
20	ROD - throttle	63266-A	1	47	VALVE - check (outlet)	A-65948-1	1
21	BOOT - throttle rod	69889	1	48	VALVE - check (inlet)	A-65502	1
22	BODY - oil pump	63343-3	1	49	LINE - oil (intake)	A-78095	1
23	SPRING - plunger	59293	1	50	LINE - oil	A-78097	1
24	PLUNGER - oil pump	A-57834-14	1	51	GASKET - cylinder	63778-1	1
	Includes: "O" RING - shaft	59074	1	52	GASKET - throttle handle	63779-C	1
25	"O" RING - plunger	74388	1	53	GRIP, Throttle handle	68767	1
				54	GRIP, Throt. Hand. cover	68768	1
				55	BUSHING	69671	2

ALWAYS FURNISH MODEL AND SERIAL NUMBER WHEN ORDERING PARTS.

HOMELITE SXL-922



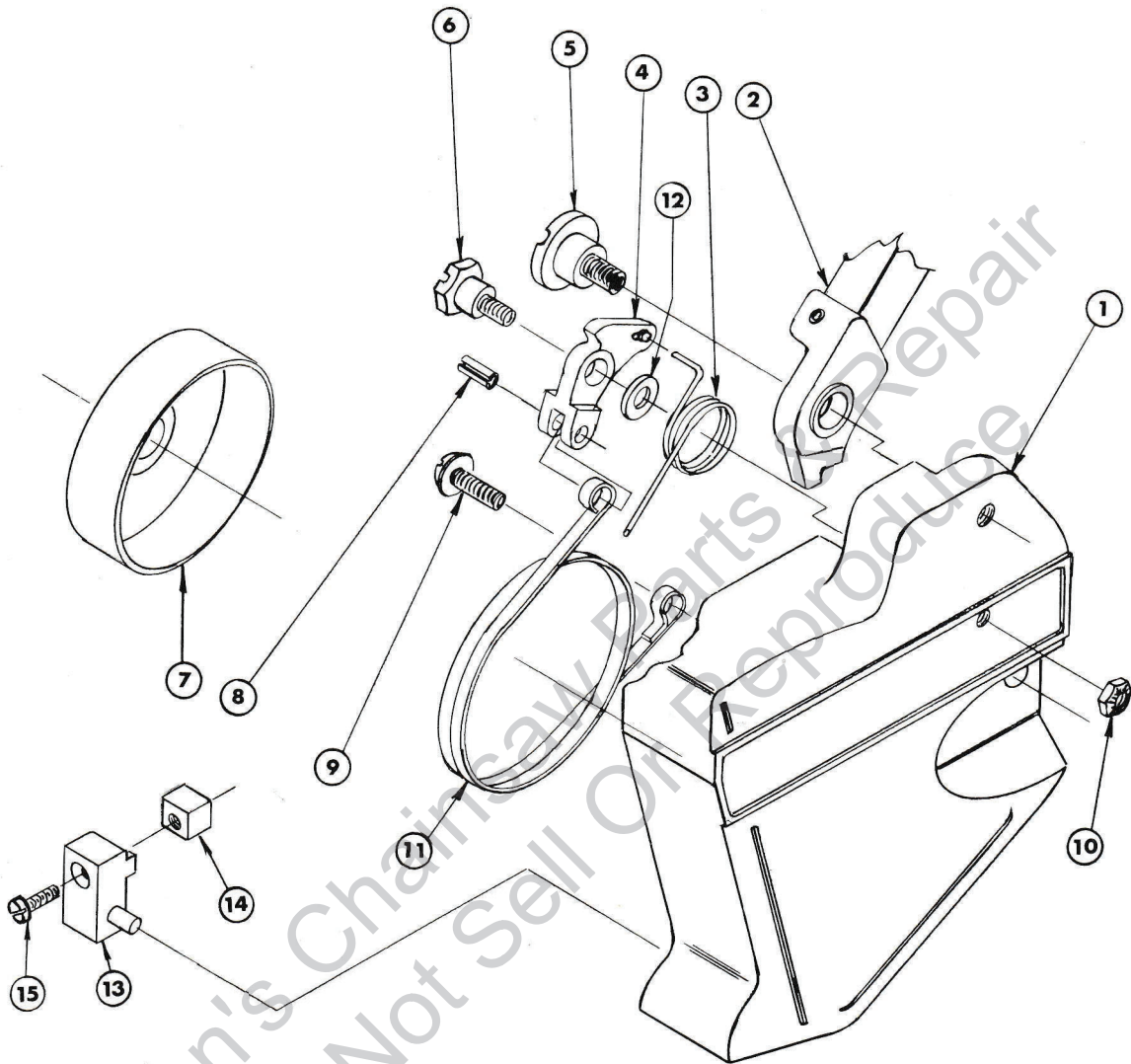
No.	Description	Part No.	Qty.	No.	Description	Part No.	Qty.
1	SCREW, fil hd 1/4-20 x 1	82259	1	16	PLATE—guide bar (inner)	70399	1
2	SCREW, fil hd 1/4-20 x 1-1/8	78117	2	17	PLATE—guide bar (outer)	70400	1
3	SPACER	68898-1	1	18	COVER—drivecase	67156-14	1
4	PLATE	65599	1	19	NUT—hex, 3/8-16	81089-2	2
5	HANDLE BAR — Flush cut Wrap around	A-78109-1 A-78457-1	1 1	23	SPROCKET & DRUM—3/8 pitch, 8 tooth	A-65885-T	1
7	MOUNT — Shock	65509	1	24	Includes: BEARING—roller	64124	1
8	PLATE, Handle bar bracker	65598-A	1	29	WASHER, thrust	78110	1
9	BRACKET, Handle bar flush Handle bar Wrap	68766-2T 68766-4T	1 1	30	WASHER—thrust	63462	1
10	KIT — spiked bumper	A-63720	1	31	RACE—inner	64129-A	1
11	Includes: SCREW—hex, 12-24 x 3/4	80867	2	32	SPRING—clutch	67441	2
12	NUT—12-24	81068	2	33	SPIDER—clutch	65723-2A	1
13	WASHER—lock, No. 12	83056	2	34	SHOE—clutch	69754-1B	6
14	GROMMET	65519	2	35	COVER—clutch	12772	1
15	SCREW—shoulder	65521	2	36	SCREW—hex, 10-32 x 1/2	78333	2
				37	CHAIN GUARD - WRAP AROUND (not shown)	68078-1	1

SPECIAL TOOLS (available on order)

Part No.	Description	Part No.	Description
22828	PLIERS — piston snap ring	23957	PLUG — seal installation (crankcase)
23528	WRENCH — socket screw (conn. rod)	24306	SHIM — air gap
23955	PLUG — bearing installation (conn. rod)	23420	PLUG — bearing installation (sprocket)
A-23965	JACKSCREW	23956	PLUG — bearing and seal installation (back plate)
23136-1	BODY — jackscrew	23846-2	ANVIL — bearing disassembling (back plate)
24302	PLUG — seal installation (back plate 910)	24006-1	PLATE — crankshaft aligning
22820-4	COLLAR — bearing installation	120875	BIT — posidrive No. 2
23846-1	ANVIL — crankshaft installation	24982	BIT-TORX
23971	SLEEVE — seal protecting (crankcase)	22772	PAINT SPRAY CAN — black
A-122315	PULLER, back plate	23475	PAINT SPRAY CAN — red
23972	SLEEVE — seal installation (crankcase)		

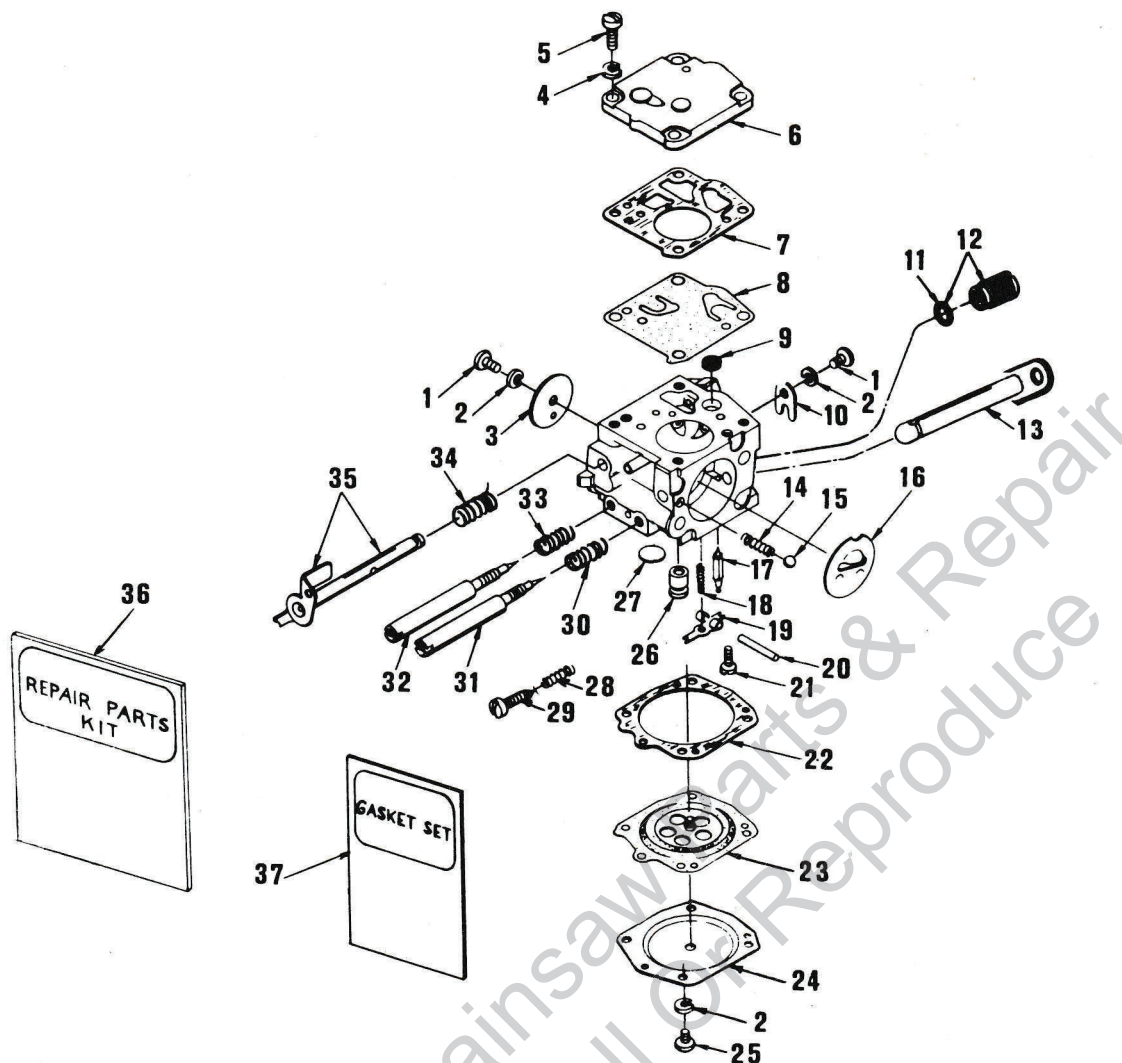
ALWAYS FURNISH MODEL AND SERIAL NUMBER WHEN ORDERING PARTS.

HOMELITE SXL-922-SL



No.	Description	Part No.	Qty.	No.	Description	Part No.	Qty.
1	COVER, Drivecase	70361-2	1	9	SCREW	82258	1
2	LEVER & Hand Guard	A-12952	1	10	NUT	81108	1
3	SPRING, Torsion	70093-B	1	11	BAND, Brake	70346	1
4	LEVER, Band	12372-2	1	12	WASHER	12290	1
5	SHOULDER SCREW	12955	1	13	BRACKET	A-78307	1
6	CAM, Adjustment	78200-A	1	14	RETAINER	78309	1
7	SPROCKET & DRUM	A-65885-2T	1	15	SCREW	82250	1
8	ROLL PIN	67911	1				

HOMELITE SXL-922



A-78272

HS151-B

No.	Description	Part No.	Qty.
1	SCREW-rd. , 4-40 x 3/16	†80264	2
2	WASHER-lock, #4	†83008-1	6
3	SHUTTER-throttle	67994	1
4	WASHER-lock, #6	83024	4
5	SCREW-fil, 6-32 x 3/8	80275	4
6	COVER-fuel pump diaphragm	58975	1
7	GASKET-pump diaphragm	‡58981	1
8	DIA PHRAGM-fuel pump	†58980-R	1
9	SCREEN-fuel inlet	†58974	1
10	CLIP-throttle shaft retaining	58982	1
11	GASKET	‡74060	1
*12	VALVE-governor	70334	1
13	SHAFT & LEVER-choke	69789	1
14	SPRING-choke friction	73264	1
15	BALL-choke friction	25527	1
16	SHUTTER-choke	58984	1
17	NEEDLE-inlet	59717	1
18	SPRING-control lever	†65603	1
19	LEVER-inlet control	†59716	1

No.	Description	Part No.	Qty.
20	PIN-control lever fulcrum	†58977	1
21	SCREW-oval, 4-40 x 1/4	†65798	1
22	GASKET-main diaphragm	‡58978	1
23	DIA PHRAGM-main control	†58988	1
24	COVER-main diaphragm	58979	1
25	SCREW-rd. , 4-40 x 1/4	80591	4
26	VALVE-check	69793	1
27	PLUG-welch, 11/32 dia.	†58991	1
28	SPRING-idle speed	†58973	1
29	SCREW-idle speed	†58993	1
30	SPRING-main adjustment needle	†73075	1
31	NEEDLE-main adjustment	69792	1
32	NEEDLE-idle adjustment	69785	1
33	SPRING-idle adjustment needle	†54440	1
34	SPRING-throttle return	†59460	1
35	SHAFT & LEVER-throttle	A-67995	1
36	REPAIR KIT	69790	1
37	GASKET-set	†67866	1
	DIA PHRAGM & GASKET-set	63711	1

†Indicates Contents of Repair Kit, #69790

‡Indicates Contents of Gasket Set, #67866

* Denotes new parts

Leon's Chainsaw Parts & Repair
Do Not Sell Or Reproduce