

IF YOU'VE NEVER OWNED A CHAIN SAW, YOU NEED ALL THE HELP YOU CAN GET.

With literally hundreds of chain saws to choose from, how in the world are you supposed to know which one will end up being right for you?

That's exactly what we at Homelite had to ask ourselves when we set out to design your first chain saw.

SHOULD YOUR FIRST CHAIN SAW HANDLE LITTLE JOBS? OR BIG JOBS?

Chances are you're going to use your chain saw for little jobs. Like pruning trees and clearing brush.

And big jobs. Like cutting trees and firewood.

So to make both jobs less like jobs, we designed your first chain saw with a separate trigger for each of them.

For the little jobs, the XL2 has a trigger up front.

This lets you get right up on top of your work, when you need really tight control.

And we put a second trigger in the rear for the big jobs.

Which gives you greater leverage and a fantastic sense of power.

HOW LIGHT SHOULD YOUR FIRST CHAIN SAW BE?

We weighed the Homelite XL2 in at 7¼ pounds*.

Light enough to make it easy to handle. Heavy enough so it doesn't feel like a toy.

HOW CHEAP SHOULD YOUR FIRST CHAIN SAW BE?

In designing your first chain saw, we at Homelite had to decide whether to give you an extremely low price and very little chain saw. Or a lot of chain saw and sell it at a price we could both live with.

This will give you an idea of what we decided:

Your first chain saw has a 12" guide bar with

the same Power-Tip® sprocket nose professional loggers use to boost their cutting power.

Your first chain saw has an all-weather ignition so that it starts when you want it to start.

Your first chain saw has an automatic chain oiler.

Your first chain saw has a rugged carbon steel saw chain and die cast magnesium housing.

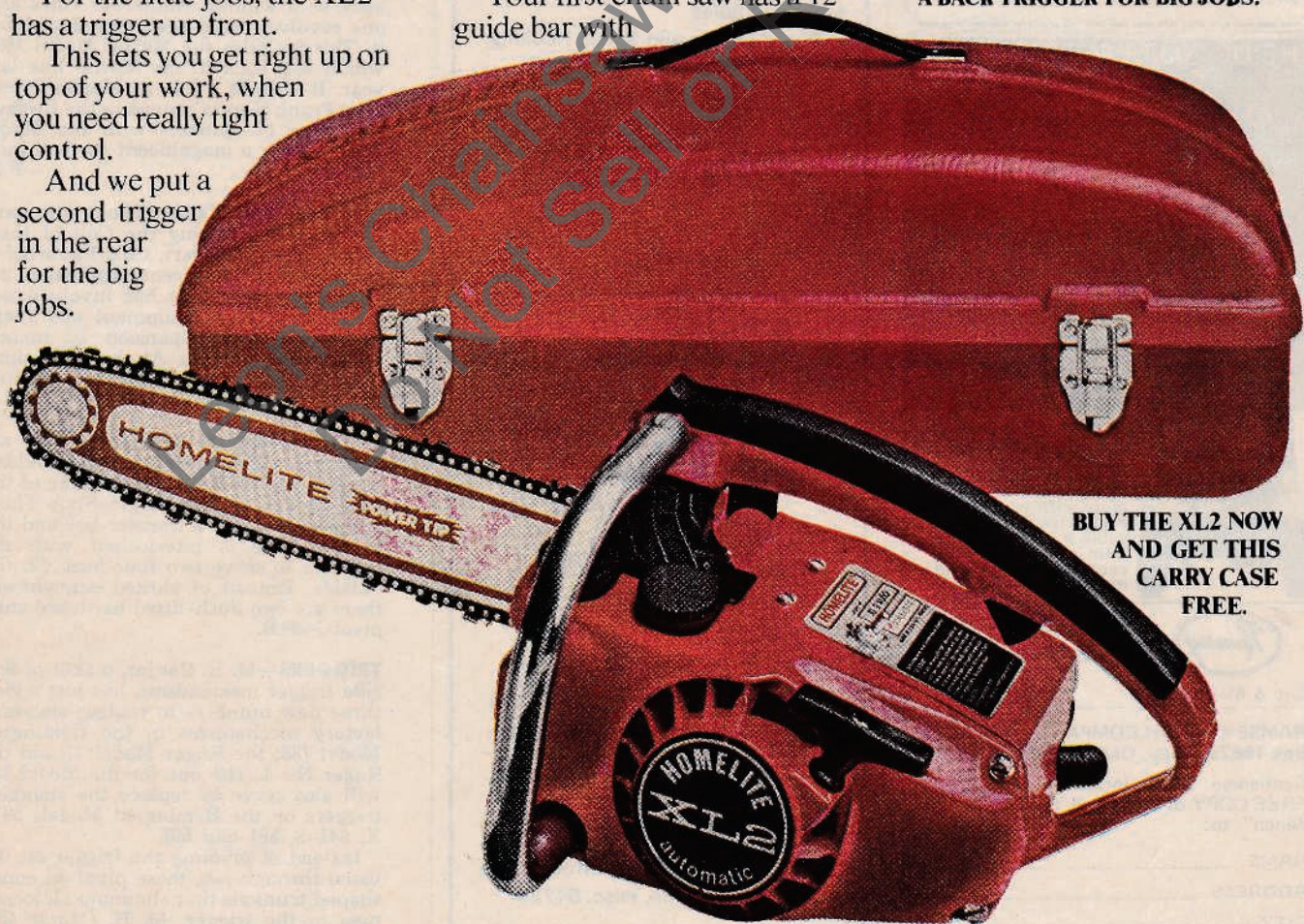
And it has all these things at a price we think is rather irresistible.

\$119.95.

After all, what would be the point of designing your first chain saw if we couldn't first lure you into buying it.

HOMELITE® XL2

WITH TWO TRIGGERS.
A FRONT TRIGGER FOR LITTLE JOBS.
A BACK TRIGGER FOR BIG JOBS.



BUY THE XL2 NOW
AND GET THIS
CARRY CASE
FREE.

*Less bar and chain. Carry case offer expires Dec. 31, 1973.
For the Homelite dealer nearest you, check the Yellow Pages under Saws.

HOMELITE A **Textron** DIVISION - FORT CHESTER, N. Y. 10573 - SUGGESTED RETAIL PRICE \$119.95.