

PERFORMANCE • DEPENDABILITY
SERVICE

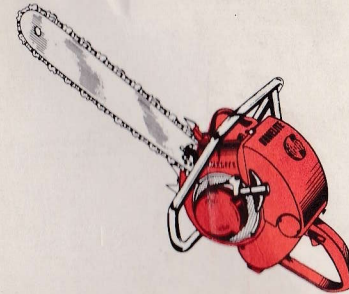
HOMELITE

a division of Textron Inc.
PORT CHESTER, NEW YORK

HOMELITE
CHAIN SAW
Alive
WITH POWER



*Here is the Information
You Requested . . .*



NOVEMBER 10, 1959

Mrs. [REDACTED]
Sandy Hill Road [REDACTED]
Irwin, Pennsylvania

**FIRST CLASS
MAIL**

Postage
Will be Paid
by
Addressee

No
Postage Stamp
Necessary
If Mailed in the
United States

BUSINESS REPLY CARD

First Class Permit No. 37, Port Chester, N. Y.

PERFORMANCE • DEPENDABILITY
HOMELITE
SERVICE

a division of Textron Inc.

PORT CHESTER, NEW YORK

Advertising Department



HOMELITE

Port Chester, New York

Gentlemen:

I want to know more about the Homelite One Man Chain Saws. Please have your dealer contact me about a **free demonstration**.

- I need a saw immediately, contact me as soon as possible.
- There is no rush, just see me when you are in my area.

NAME.....

ADDRESS.....

.....

STATE.....TELEPHONE.....

A Man's Guide To Chain Saws

FAST • EASY • LOW-COST
CUTTING POWER

HOMELITE



What is it?

A chain saw is a power tool. Most of the chain saws manufactured and sold today are powered by a two-cycle gasoline engine. This is in contrast to the power tools most men use in their home workshops, like a power drill, sander, or arbor saw that are powered by electricity.

The advantage of a gasoline-powered chain saw lies in two things:

1. It cuts with incredible speed (it will cut through a 12" log in 12 seconds).
2. It can be used anywhere, carried anywhere . . . your backyard, woodlot, camp, ranch, estate, orchard . . . without regard to an outside power source.

The chain saw consists of three things: (1) an engine which drives (2) an endless loop of chain on which are riveted sharp cutting teeth, and (3) a guide bar on which the chain rides as it cuts (see Figures 1 and 2 below).

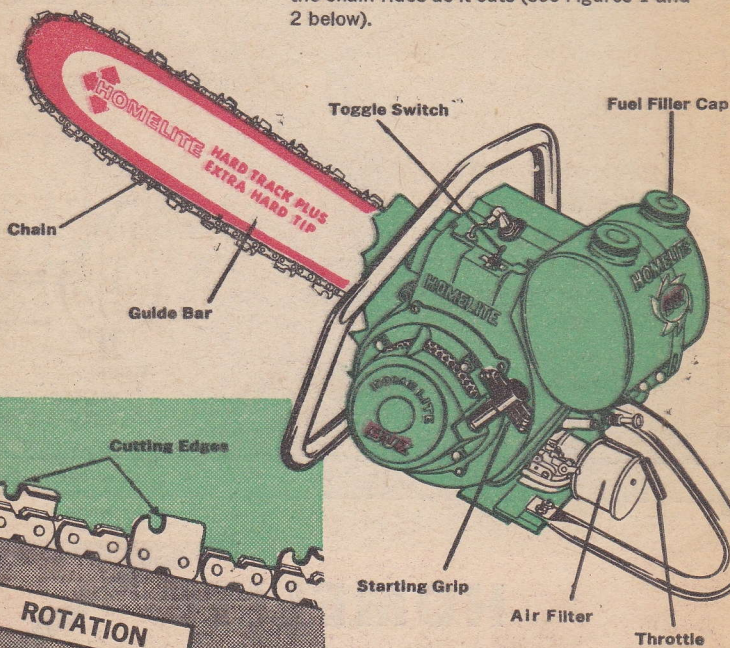


FIGURE 2

WHY IS A TWO-CYCLE ENGINE USED IN CHAIN SAWS?

1. It offers more power per pound. In general, the two-cycle engines will weigh 30% to 225% less than the four-cycle engines, yet can deliver the same horsepower.
2. It delivers twice as many power strokes for the same number of crankshaft revolutions.
3. It has fewer parts. The two-cycle engine needs no camshaft, poppet valves or valve drive mechanism.

THE 2-CYCLE ENGINE

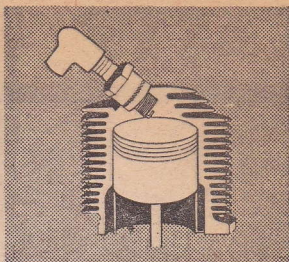


FIGURE 3

This is a cross-section of the short-stroke engine used on Homelite chain saws. The advanced cylinder design and shorter piston stroke cut wasteful friction, improve power, increase engine life and reduce gas consumption.

WHY IS THIS IMPORTANT?

1. Light weight is extremely desirable in a chain saw. In carrying it to a distant point like a hunting camp or woodlot on the edge of the farm.
2. In operating it over a long period of time. In even an hour's cutting time the difference of two pounds in weight can be felt by the operator.

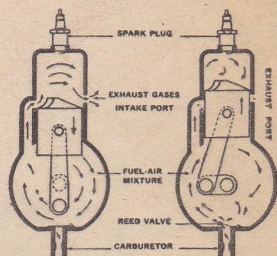


FIGURE 4

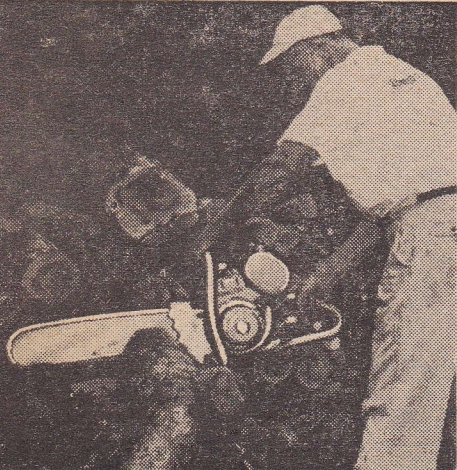
FIGURE 5

HOW A 2-CYCLE ENGINE WORKS

The two-cycle engine combines intake, compression, power and exhaust in one revolution of crankshaft as shown in Figures 4 and 5. In Figure 5, piston moves toward cylinder top, compresses fuel-air charge and draws in next fuel-air charge through a reed valve. When piston reaches cylinder top, mixture is ignited and piston is forced down on power stroke. As piston moves down (Figure 4) it uncovers exhaust ports and intake ports, which expels burned gases and admits fresh fuel mixture ready for cycle to repeat.

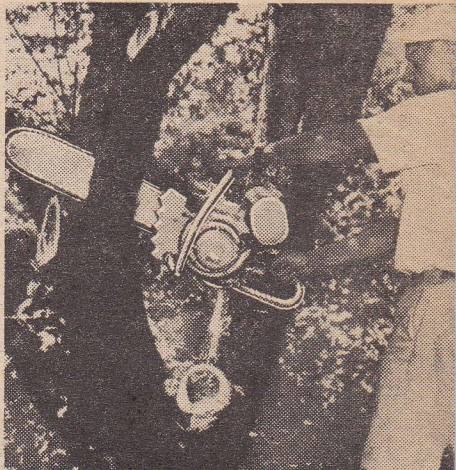
Where do you use it?

The versatile chain saw is used anywhere you want to cut wood faster, with less effort and more economy than any other known method. Interestingly enough, it is often used by practical men for such odd-sounding jobs as cutting frozen silage, cutting ice blocks for summer use and demolishing wooden buildings. On these pages are some specific examples of widespread uses of the chain saw.



CUTTING FIREWOOD (Figure 4)

A chain saw will cut more firewood in an hour than two men can cut with a hand saw in a day. Because the chain saw is so portable, it can be used to cut firewood at a distant camp as well as in your own backyard for your home fireplace. Homelite chain saws are noted for their easy portability.



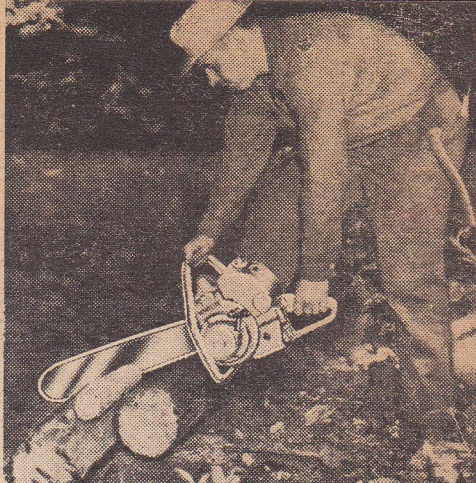
PRUNING AND TRIMMING (Figure 5)

For either orchards or shade trees, the fast-cutting chain saw is unbeatable. It provides power, extended reach and the ability to make awkward cuts with little effort and less strain on arms and back. Homelite chain saws are especially easy to carry up into a tree because of their light weight.



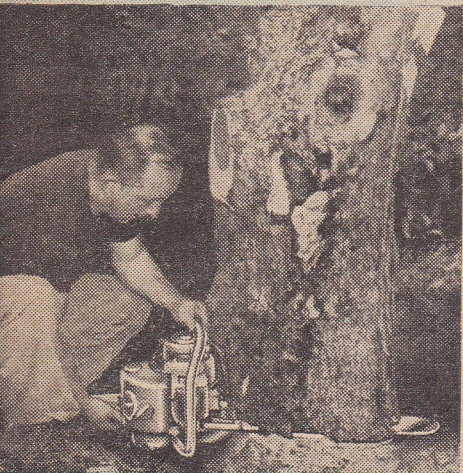
REPAIRING STORM DAMAGE AND CUTTING DEAD TREES (Figure 6)

A chain saw can pay for itself in the speed with which it lets you remove trees damaged by storms or disease. In one case, you save money by quickly preventing further storm damage to property. In the other, by preventing the spread of disease.



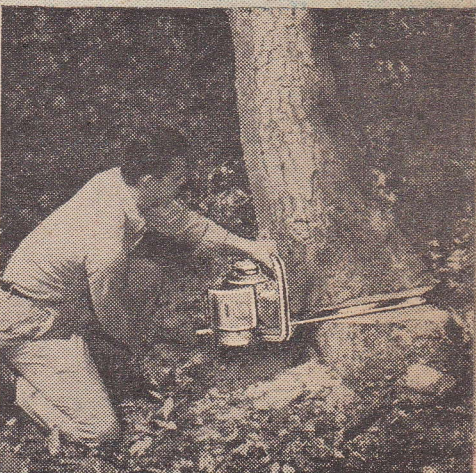
MAKING CAMPSITES (Figure 7)

For every outdoor man or family, the chain saw can be one of your best investments. It lets you clear areas, cut firewood, cut lumber for shelter and cabin and clear fire lanes faster and easier than any other method. The net result is: you have more time for fun.



CLEARING FOR LANDSCAPES (Figure 8)

Removing unwanted trees for landscaping is best handled with a chain saw that lets you cut level with the ground. This eliminates ugly, troublesome stumps and leaves your grounds clean and neat. Homelite chain saws are available with the flush-cut handle that makes this such an easy job.

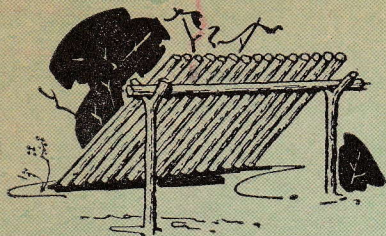


CUTTING FOR CASH (Figure 9)

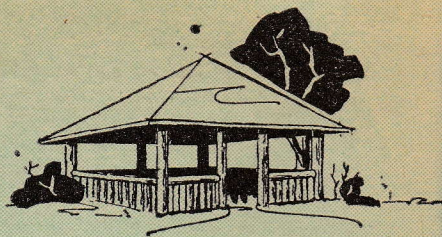
Farmers and woodlot owners all over the country are making extra money by harvesting their trees as a cash crop. This serves two useful purposes: (1) it promotes faster growth of healthy trees by clearing out the tree stand and (2) it provides extra income. Many men have realized upwards of \$5,000 a year in part-time cutting this way. Ask your Homelite dealer to tell you about men in your section of the country who have done it.

STRUCTURES YOU CAN BUILD WITH WOOD THAT YOU CUT WITH YOUR CHAIN SAW

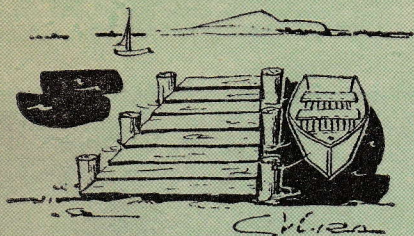
FIGURE 10



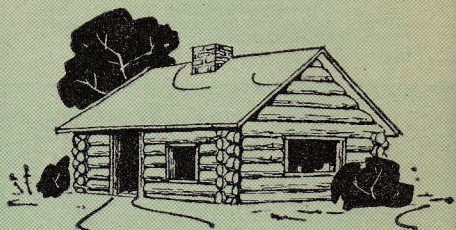
LEAN-TO



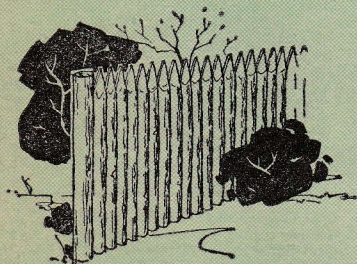
OPEN-AIR SHELTER



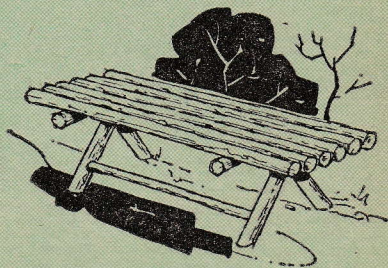
DOCK OR PIER



CLOSED CABIN



FENCE



PICNIC TABLE AND BENCHES

Aside from special cutting jobs, the chain saw does three basic types of jobs on trees; cuts them down (called "felling"); cuts them up (called "bucking") into firewood, fence posts or lumber; and trims the branches.

Each of these cutting operations has special characteristics and requires different methods and safety rules.

The speed with which the chain saw does the cutting is an important factor in safety.

A government bulletin says: "Men unaccustomed to using a chain saw will be surprised again and again at how fast it cuts. Either in felling or bucking, the cut will often be finished before they expect it. It is important that provisions for the getaway . . . become almost automatic."

How do
you use it?

FELLING

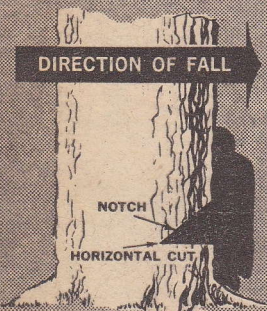


FIGURE 11

1. After clearing away all undergrowth, select a line on which you want the tree to fall . . . giving consideration to the natural lean, wind, position of heavy branches. Then cut notch on the side the tree is to fall. Notch should be $\frac{1}{4}$ to $\frac{1}{2}$ through tree (see Figure 11).

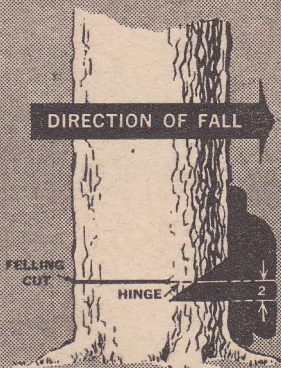


FIGURE 12

2. Keep both hands on handles while using saw. Start felling cut on opposite side of tree (Figure 12) at least 2" higher than horizontal cut of notch (the larger the tree, the higher the felling cut should be above the notch. **DO NOT CUT THROUGH TO NOTCH.** Always leave section of wood parallel to notch as hinge.

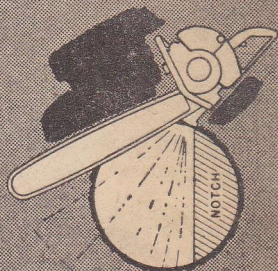


FIGURE 13

3. Because chain pulls bumper tight against the trunk, the cut must be made in arc form (Figure 13) pivoting on bumper. As you make cut, watch both cut and top of tree for signs of movement. Moment tree starts to tip, release throttle and get 20-25 feet back from trunk. **KEEP ALERT.**

LIMBING



FIGURE 14

1. Remove branches and limbs before bucking. Watch your balance. Reach across fallen trunk to cut limbs on opposite side. . . . stand on right side to cut limbs on left side. Limbs extending straight up may be cut from either side.

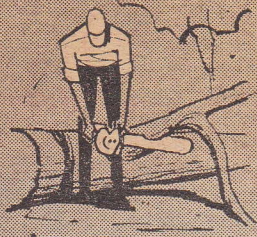


FIGURE 15

2. Undercuts should be used on limbs supported at both ends (Figure 15). Hold bumper tight against tree before chain contacts wood. Be sure you have prepared path of retreat and be ready to shut off power and pull saw out fast. When using top or nose of saw to cut, hold your hip or thigh against rear of engine to be prepared for any unexpected thrust.

BUCKING

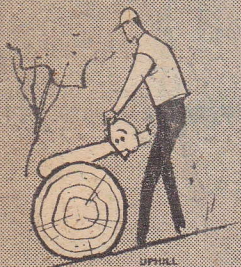


FIGURE 16

1. Remember to stand on uphill side of log when bucking (Figure 16). When log is flat on ground, watch for stones that can blunt teeth in an instant. It is best to stop cutting an inch from ground, later roll log and separate pieces.

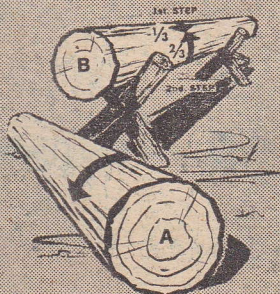


FIGURE 17

2. A log flat on the ground can be bucked from the top (Figure 17A) (called overbucking). A log suspended in the center, but supported on ends (Figure 17B) should be cut upward from bottom (underbucking). You will avoid splitting if you make first cut from top, about $\frac{1}{3}$ through, then finish with undercut. Make sure of good, solid footing and have saw well-supported by body. In this type of cut, saw tends to push toward operator.

"Know-How" For Safe Operation

If you have never used a chain saw, a 10-minute demonstration by your Homelite dealer will be of great value. It will save you time, money and possible injury

- 1 ALWAYS KEEP BOTH HANDS FIRMLY ON HANDLES.
- 2 WEAR PROTECTIVE CLOTHING — safety helmet, heavy non-slip footwear. NEVER wear loose-fitting gloves, ties or outer garments.
- 3 STOP ENGINE BETWEEN CUTS. Never carry a running saw or cut with the throttle locked open.
- 4 KEEP CHAIN SHARP. Dull chain makes cutting hard, overloads engine, induces fatigue and resulting carelessness.
- 5 PLAY IT SAFE. Don't try to fell big trees or trees in dangerous positions until you have experience with the chain saw.
- 6 PREPARE A RETREAT. Make sure you have a safe, clear path of retreat from tree.

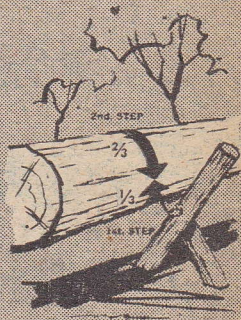


FIGURE 18

3. To cut end section of log suspended above ground (Figure 18) reverse the cutting sequence. First undercut about $\frac{1}{3}$ through, then finish the cut from the top down.

In choosing your chain saw, a number of factors will influence the type you will buy — (1) size and type of trees you will be cutting, (2) the frequency with which you will use the saw, (3) the number of special cutting jobs you want to do. Homelite makes a full line of chain saws for every cutting purpose and in the table below you will find a comparison of all models and their performance.

You will notice reference to the drive — either direct or gear. Direct-drive chain saws have a faster chain speed and work best in smaller trees (up to 3 feet in diameter). Gear-drive chain saws, on the other hand, have the extra lugging power needed to bring down big trees.

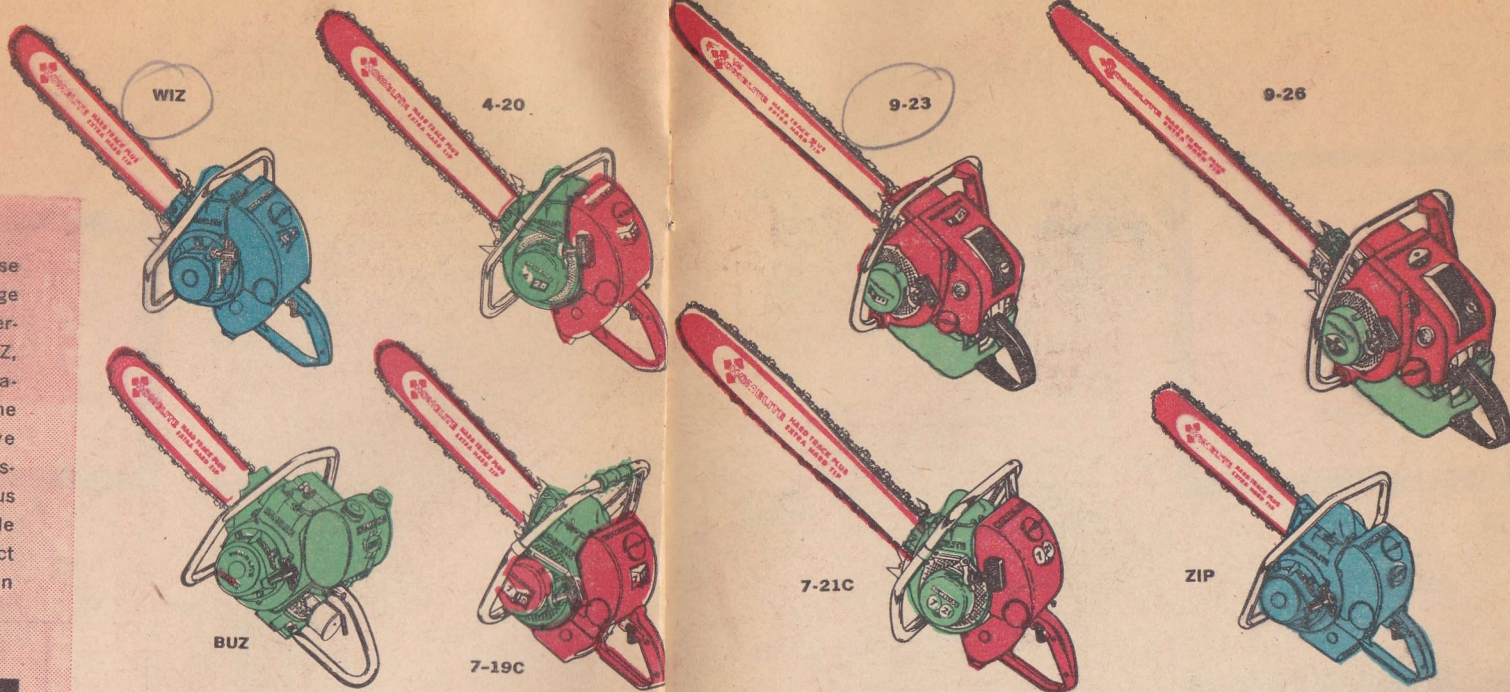
In the end, your own needs will dictate the choice. Your nearby Homelite dealer will be happy to demonstrate the various models and let you try them for yourself.

What kind of Chain Saw?

SAW	BUZ	ZIP	WIZ	7-19C	4-20	7-21C	9-23	9-26
WEIGHT (lbs. less bar and chain)	19	18	20	19	20	21	23	26
Type of Drive	direct	direct	gear	direct	gear	gear	direct	gear
Gear Ratio	—	—	3.5-1	—	3.5-1	2.8-1 3.5-1	—	2.8-1 3.5-1
Chain Speed (feet per minute)	3,000	3,000	840	3,000	840	1,231 1,062	3,498	1,392 1,104
Tree Sizes Saw Will Cut (Diameter)	Up to 3'	Up to 3'	Up to 4'	Up to 5'	Up to 5'	Up to 7'	Up to 7'	Up to 10'
Straight Blade Bar Lengths	12" to 21"	12" to 21"	14" to 28"	12" to 30"	14" to 38"	14" to 60"	17" to 42"	18" to 60"
Positive Action Chain Oiler	X	X	X	X	X	X	X (Dual Control, Either Hand)	X (Dual Control, Either Hand)
Flush-cut Handle	X	X	X	X	X	X		
Wrap-around Handle	—	—	—	X	X	X	X	X
All-Position Diaphragm Carburetor	X	X	X	X	X	X	X	X
Fuel Tank Capacity (ozs.)	40	45	44	45	44	60	56	56
Attachments	—	brush cutter, power peeler	bow, clearing bar, brush cutter	bow, brush cutter, power peeler	bow, clearing bar, brush cutter	bow, clearing bar, brush cutter	bow	bow, clearing bar

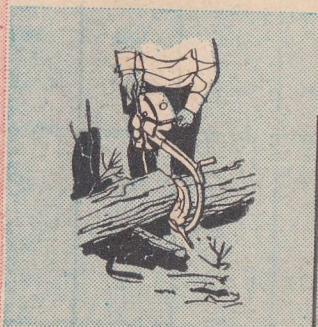
SIZE

As shown on these pages, sizes range from the small, powerful, direct-drive BUZ, designed for occasional users, to the bigger, gear-drive 9-26 used by professional loggers. Various blade sizes available with the models affect size of tree that can be cut.



FOR SPECIAL CUTTING JOBS

Homelite also makes a variety of attachments to meet special cutting needs for either the occasional user or the professional. These are shown in the drawings at right. All of them except the tree pruner are attached directly to the chain saw engines of the models shown above and do not require another power source.



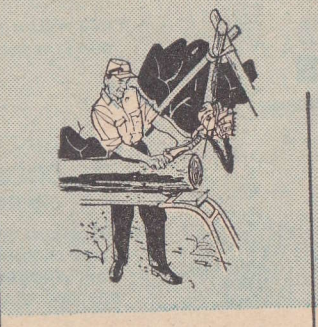
16" PLUNGE-CUT BOW
Ideal for cutting pulpwood. Won't bind in any cut. Eliminates bending or stooping to buck sticks. Gives top pulpwood production with less effort.



CLEARING ATTACHMENT
Makes quick work of removing brush, dense undergrowth. Attaches in seconds to make chain saw an efficient, easy-to-handle power scythe. Three times faster than hand methods.



BRUSH CUTTER
Cleans out small trees and saplings quickly and easily. Speeds up clearing land for fire lanes or campsites, maintaining rights-of-way and clearing around construction work.



POWER PEELER
Increase pulpwood profits 15-25%. One man can peel 3 cords a day. Attaches to direct-drive Homelite in less than 2 minutes.



ELECTRIC PRUNER
Cuts cleanly up to 1 1/2" without crushing. Weighs only 6 1/2 pounds. Won't bind, can't freeze up. Operates on regular house current or from 90-pound Homelite generator.

How to take care of your Chain Saw

BEFORE YOU CUT

1. MIX THE FUEL

The Homelite Safety Can is a convenient way to carry and mix fuel; its filler cap is an oil measuring cup.

BREAK-IN MIXTURE: Mix first canful of fuel in proportion of $\frac{3}{4}$ pint of Homelite chain saw oil (or 1 pint of good grade SAE 30 engine oil) to each gallon of gasoline. After this first can has been used, use regular fuel mixture.

REGULAR FUEL MIXTURE: Mix thoroughly $\frac{3}{4}$ pint of Homelite chain saw oil (or $\frac{3}{4}$ pint of good grade SAE-30 engine oil) with each gallon of gasoline. Use regular or high-test gasoline. Make sure it is fresh and clean.

2. FILL THE CHAIN OILER

Fill the chain oil reservoir with SAE-30 engine oil in summer and SAE-10 oil in winter. In temperatures below 0 F., use mixture of four parts SAE-10 to one part kerosene. See Figure 19.

3. CHECK GEAR OIL

(On Gear-Drive Models)

Place saw on level surface, then observe oil level through inspection window. When level is below bottom of inspection window, refill to arrow level only with Homelite SAE-90 gear oil. See Figure 20.

FIGURE 19

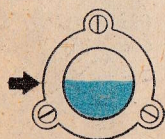
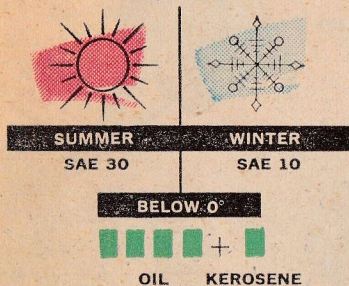


FIGURE 20

WHILE YOU CUT

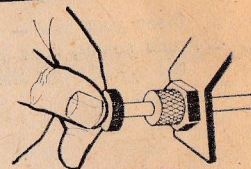
1. CHECK CHAIN TENSION OFTEN (but first stop the engine)

A tight chain causes excessive wear of both chain and guide bar. New chains always stretch slightly during the first half hour of operation. With proper tension, chain should slide easily around bar when rotated by hand. Check and readjust chain tension frequently.



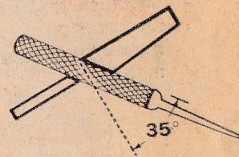
2. LUBRICATE THE CHAIN FREQUENTLY

Use the chain oiler freely and at regular intervals. Lubricate while the chain is rotating slowly, otherwise the oil will be thrown off.



3. SHARPEN THE CHAIN

Keeping the chain sharp is important. The life of the entire saw depends upon how well and how regularly chain is filed. Your Homelite operator's manual gives complete, easy-to-follow instructions on sharpening the chain.



4. MAKE SURE ALL NUTS AND BOLTS ARE TIGHT

Since some vibration in cutting wood is unavoidable, be sure to check the tightness of screws, nuts and bolts before and during operation. Loose fasteners can produce damage to the unit and make for unsafe operation.

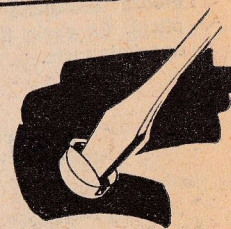


FIGURE 21

1. Always mix oil and gasoline thoroughly before pouring fuel into fuel tank. Wipe tank clean before removing fuel filler cap from tank.
2. A saw which has had a cylinder or piston replaced should be treated as a new unit and operated with break-in fuel mixture.
3. Never run saw at full throttle except to cut wood. Without cutting load, engine will tend to race, causing excessive wear of guide bar and chain.

EVERY DAY

1. Sharpen your chain — a sharp chain cuts fast with less effort
2. Inspect the bar — a good bar prolongs chain life.
3. Clean your saw — a clean saw runs cooler, lasts longer. Even the cylinder fins should be kept clean.
4. Clean or replace the air filter (see your operator's manual for instructions about your particular model).
5. Clean sawdust and pitch from bar groove (kerosene will soften pitch). Oil chain thoroughly. A dry chain rusts.

EVERY WEEK

1. Check the sprocket. A worn sprocket can ruin the chain. Especially important when you install a new chain.
2. Check the muffler element. Take off muffler cap, inspect screen element. Replace with new one if it looks burned or frayed.
3. Check the spark plug. Clean or replace if necessary.
4. Reverse the guide bar top for bottom. You'll get longer life, just as you get longer tire life on your car by rotating the tires.

WHAT TO DO 'TILL YOU SEE YOUR DEALER

TROUBLE	PROBABLE CAUSE	REMEDY
WILL NOT START	Toggle switch "off" Fuel tank empty Faulty spark plug No spark	Turn "on" Fill Replace Test (see Operator's Manual)
DOES NOT RUN WELL	Air filter clogged Fuel filter clogged Faulty spark plug Water or dirt in fuel Carburetor out of adjustment	Clean Change Replace Drain tank and carburetor, and clean Readjust (see Operator's Manual)
DOES NOT CUT WELL	Dull chain Tight chain Pinched bar Chain reversed	Sharpen Adjust tension Remove chain, open pinch Remove chain and assemble correctly.

**Be Sure of
Local Service**



Like all modern power tools, chain saws should be kept in good operating condition. Be sure the dealer from whom you buy your chain saw provides local service for you and that your dealer stocks spare parts.

Homelite's 3,600 dealers across the country are factory-trained in service and always stock the spare parts for the Homelite models. You can be sure of both parts and service when you buy Homelite.

Think First of Quality...
Think First of HOMELITE



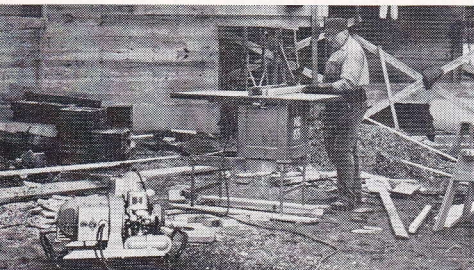
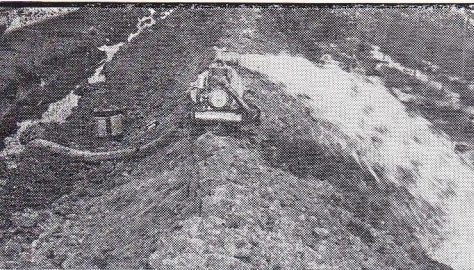
HOMELITE

A DIVISION OF TEXTRON INC.
PORT CHESTER, NEW YORK

*Manufacturers of: Chain Saws • Power Mowers
Carryable Pumps • Generators • Blowers*

HOMELITE

CONDENSED PRICE LIST



CHAIN SAWS

•

GENERATORS

•

PUMPS

•

BLOWERS

•

VIBRATORS

•

TOOLS

•

PRUNERS

•

ACCESSORIES

HOMELITE

a division of Textron Inc.
PORT CHESTER, NEW YORK

SEPTEMBER 15, 1959



HOMELITE CHAIN SAWS

GASOLINE ENGINE DRIVEN

Model BUZ Direct Drive Flush Cut Handle 19 lbs.*

12" Straight Bar and Chain	\$153.50
17" " " " "	168.75
21" " " " "	174.90

Combination - wrench and chain repair kit supplied with each saw.

Model ZIP Direct Drive Flush Cut Handle 18 lbs.*

12" Straight Bar and Chain	\$179.80
17" " " " "	195.05
21" " " " "	201.20
25" " " " "	207.20
16" Plunge Cut Bow and Chain	224.50

Combination - wrench and chain repair kit supplied with each saw.

Model 7-19C Direct Drive 19 lbs.*

Type of Handle Flush Cut Wrap-Around

12" Straight Bar and Chain	\$236.60	\$240.10
17" " " " "	251.85	255.35
21" " " " "	258.00	261.50
25" " " " "	264.00	267.50
30" " " " "	273.05	276.55
16" Plunge Cut Bow and Chain	281.30	284.80
Model 7-19C EBC Brush Cutter		359.00

Combination - wrench and chain repair kit supplied with each saw.

Model 9-23 Direct Drive Wrap-Around Handle 23 lbs.*

17" Straight Bar and Chain	\$292.00
21" " " " "	298.20
25" " " " "	304.30
30" " " " "	313.20
36" " " " "	323.10
42" " " " "	334.50

Combination - wrench and chain repair kit supplied with each saw.

Model 5-30 Belt Drive Wrap-Around Handle 30 lbs.*

18" Straight Bar and Chain	\$366.05
23" " " " "	373.00
28" " " " "	379.60
33" " " " "	387.65
38" " " " "	395.55
44" " " " "	409.00
50" " " " "	421.50
60" " " " "	441.15
16" Plunge Cut Bow and Chain	395.35

Combination - wrench and chain repair kit supplied with each saw.

Model WIZ Gear Drive Flush Cut Handle 20 lbs.*

14" Straight Bar and Chain	\$224.95
18" " " " "	241.15
20" " " " "	243.45
23" " " " "	248.05
28" " " " "	254.80
16" Plunge Cut Bow and Chain	249.95

Combination - wrench and chain repair kit supplied with each saw.

Model 4-20 Gear Drive 20 lbs.*

Type of Handle Flush Cut Wrap-Around

14" Straight Bar and Chain	\$274.50	\$279.50
18" " " " "	290.70	295.70
20" " " " "	293.00	298.00
23" " " " "	297.60	302.60
28" " " " "	304.35	309.35
33" " " " "	312.65	317.65
38" " " " "	322.50	327.50
16" Plunge Cut Bow and Chain	319.90	324.90
Clearing Attachment and Chain	315.45	320.45
Model 4-20 EBC Brush Cutter		388.95

Gear Oil, combination-wrench and chain repair kit supplied w/each saw.

Model 7-21C Gear Drive 21 lbs.*

Type of Handle Flush Cut Wrap-Around

14" Straight Bar and Chain	\$321.20	\$326.20
18" " " " "	337.40	342.40
20" " " " "	339.70	344.70
23" " " " "	344.30	349.30
28" " " " "	351.05	356.05
33" " " " "	359.35	364.35
38" " " " "	369.20	374.20
44" " " " "	380.60	385.60
50" " " " "	393.50	398.50
60" " " " "	413.40	418.40
16" Plunge Cut Bow and Chain	366.60	371.60
Clearing Bar and Chain	362.15	367.15
Model 7-21C EBC Brush Cutter		435.65

Gear Oil, combination-wrench and chain repair kit supplied w/each saw.

Model 9-26 Gear Drive Wrap-Around Handle 26 lbs.*

18" Straight Bar and Chain	\$374.00
23" " " " "	380.85
28" " " " "	387.60
33" " " " "	395.90
38" " " " "	405.85
44" " " " "	416.90
50" " " " "	429.95
60" " " " "	450.00

Gear Oil, combination-wrench and chain repair kit supplied w/each saw.

*Engine Only

HOMELITE Carryable GENERATORS

GASOLINE ENGINE DRIVEN

ALTERNATING CURRENT GENERATORS

115 Volt 60 Cycle Single Phase

Model	Rating	Weight	Price
35A115-1	1500 watt	90 lbs.	\$350.00
*35A115-1	1500 watt	90 lbs.	385.00
41A115	3000 watt	165 lbs.	425.00
†41A115-9	3000 watt	167 lbs.	513.00
8A115	3000 watt	135 lbs.	540.00

*With Idle Control

DUAL VOLTAGE AC GENERATORS

Dual Voltage 115 or 230 Volts 60 Cycle Single Phase

Model	Rating	Weight	Price
8A115/230-1	3000 watt	141 lbs.	\$555.00
41A115/230-1	3000 watt	167 lbs.	450.00
†41A115/230-9	3000 watt	169 lbs.	538.00

†Electric Cranking Units (Less Battery)

DUAL PURPOSE HIGH-CYCLE GENERATOR

230 Volt 180 Cycle 3-Phase AC and 110 Volt DC

Model	Rating	Weight	Price
8HY-1	3000 watt	143 lbs.	\$600.00

DIRECT CURRENT GENERATOR

120 Volt Compound Wound

Model	Rating	Weight	Price
**24D120-2	2500 watt	107 lbs.	\$495.00

**Pilot light and multiple output receptacles on this unit.

FLOODLIGHTS

Model	Size	Type	Price
A-31656-1	300 watt	Floodlight (with Bulb)	\$31.80
A-31656-2	500 watt	Floodlight (with Bulb)	32.55
A-31656-3	300 watt	Spotlight (with Bulb)	31.85
A-31656-4	500 watt	Spotlight (with Bulb)	32.20

ELECTRIC CABLES

2-wire, 3-wire and 4-wire cables are available. Ask for current prices.

HOMELITE Carryable PUMPS

GASOLINE ENGINE DRIVEN

SELF-PRIMING CENTRIFUGAL PUMPS

Model	Size	Capacity	Weight	Price
20S1 1/2-1A	1 1/2"	5,500 g.p.h.	46 lbs.	\$185.00
36S2	2"	9,000 g.p.h.	87 lbs.	295.00
23S2	2"	10,000 g.p.h.	85 lbs.	295.00
"300" 8S3-1 (Slow Speed)	3"	18,000 g.p.h.	103 lbs.	375.00
"300" 8S3-1R (Std. Speed)	3"	18,000 g.p.h.	103 lbs.	385.00

SELF-PRIMING DIAPHRAGM PUMP

Model	Size	Capacity	Weight	Price
20DP3-1	3"	5,000 g.p.h.	120 lbs.	\$395.00

PRESSURE PUMP

Model	Size	Capacity	Weight	Price
"300" 8S3-1P	3"	102 g.p.m.—60 p.s.i. 250 g.p.m.—Open Discharge 80 p.s.i.—Shut Off Pressure	103 lbs.	\$395.00

HOMELITE PUMPS

FOR ELECTRIC MOTOR DRIVE

SELF-PRIMING CENTRIFUGAL PUMPS

Model	Size	Capacity	*Weight	Price
LM20S1 1/2-1A	1 1/2"	5,000 g.p.h.	37 lbs.	\$152.00
LM23S2-1	2"	8,000 g.p.h.	64 lbs.	220.00
LM24S3-1	3"	15,000 g.p.h.	69 lbs.	265.00

*Pump and Base Only

SELF-PRIMING DIAPHRAGM PUMP

Model	Size	Capacity	*Weight	Price
DP-3	3"	5,000 g.p.h.	120 lbs.	\$320.00

*Pump Only

All Prices Less Motor

1 1/2"—2"—3" Suction and Discharge Hose available.
Ask for current prices.

Note: All pumps supplied with strainer and spanner wrench.

HOMELITE Carryable BLOWER

GASOLINE ENGINE DRIVEN

Model	Outlet	Capacity	Weight	Price
20B-1	Square	1500 cfm	35 lbs.	\$195.00

Collapsible or Non-Collapsible duct available for Blower.
Round Outlet available.

ELECTRIC PRUNER

Model	Length	Price
EP-1-4	45"	\$139.50
EP-1-6	72"	162.50

HIGH-CYCLE VIBRATORS

Model	Description	Price
VH-10	HCH 230, 10' Hose	\$302.50
VH-5	HCH-230-5 5' Hose	281.00
VH-LD	Light Duty, 10' Hose Only	275.00
VH-HD	Heavy Duty, 14' Hose	525.00
VH-HD-7	Heavy Duty, 7' Hose	490.00

UNIVERSAL VIBRATOR (Motor-in-Head)

Model	Description	Price
VU-MH	HUV-60, 10' Hose	\$315.00

UNIVERSAL VIBRATOR (Flexible Shaft)

Model	Price
MU-FS	Motor, only (with Harness) \$157.30

Heads and Shafts

A-33753	13/16" Head—4' Shaft	\$ 72.50
A-33520	1 1/4" Head—5' Shaft	102.50
A-33521	1 1/4" Head—10' Shaft	113.85
A-33522	1 7/8" Head—5' Shaft	109.00
A-33523	1 7/8" Head—10' Shaft	121.61
A-33517	10' Extension Shaft	50.60
A-33524	Coupling, for Extension	17.65

ELECTRIC BUILDERS HAMMERS

Model	Description	Weight	Price
BH-HC	High-Cycle	20 lbs.	\$320.70
BH-21-U	Universal	21 lbs.	340.00
BH-13-U	Universal	13 lbs.	262.00

HIGH-CYCLE ELECTRIC PAVEMENT BREAKERS

Model	Description	Price
PB-MD	Medium Duty	\$649.85
PB-LD	Light Duty	588.70

HIGH-CYCLE ELECTRIC ROCK DRILLS AND BLOWERS

Model	Description	Price
RD-TC	Rock Drill with Tapered Chuck	\$618.00
RD-HEX	Rock Drill with Hex Chuck	622.00
BL-HC	High-Cycle Blower	483.20
BL-HC-S	High-Cycle Suction Blower, with Tank	610.35
BL-U	Universal Blower	217.30

MODEL 7-19C—9-23—BUZ AND ZIP BARS AND CHAINS

Size	Bar Part No.	Price	For 9-23			
			No. 62 Chain	Price	No. 10 Chain	Price
12"	A-51545	\$14.80	A-51542	\$16.90		
17"	A-51517	25.65	A-51535	21.30	A-51927	\$21.60
21"	A-51521	28.85	A-51536	24.25	AA-73340	24.60
25"	A-51525	31.15	A-51537	27.95	AA-73342	28.40
30"	A-51539	35.80	A-51540	32.35	AA-73344	32.65
36"	52298-2	39.50			AA-73346	36.85
42"	52299-2	46.50			AA-73350	41.95

MODEL 5-30 BARS AND CHAINS

Size	Bar Part No.	Price	Chain Part No.	Price
18"	A-74318	\$25.30	AA-73338	\$20.75
23"	A-74323	28.40	AA-73340	24.60
26"	A-74328	31.20	AA-73342	28.40
33"	73330-1A	35.30	AA-73344	32.65
38"	73332-1	38.70	AA-73346	36.85
40"	73336-1	47.05	AA-73350	41.95
50"	73565-1	54.05	AA-73597	47.45
60"	73562-1	64.80	AA-73598	56.35

MODEL 7-21C—4-20—9-26 AND WIZ BARS AND CHAINS

Size	Bar Part No.	Price	No. 10 Chain	Price	No. 4C Chain	Price
14"	A-56590	\$13.00	A-55338	\$16.95		
18"	A-55718	25.40	AA-73338	20.75	AA-72977	\$20.85
20"	A-55720	26.40	A-55319	22.05		
23"	A-55723	28.45	AA-73340	24.60	AA-72978	24.65
28"	A-55728	31.40	AA-73342	28.40	AA-72979	28.45
33"	55704-1A	35.45	AA-73344	32.65	AA-72983	32.70
38"	55705-1	41.10	AA-73346	36.85	AA-72981	37.00
44"	55706-1	47.40	AA-73350	41.95	AA-72984	41.75
50"	55707-1	54.80	AA-73597	47.45	AA-73564	47.40
60"	55708-1	65.80	AA-73598	56.35	AA-73563	56.45

BOW GUIDES — CHAIN AND ACCESSORIES

Bow Guides

Size	Part No.	Model	Drive	Price
16"	A-56486	7-21C—4-20—WIZ	Gear	\$49.95
16"	A-56485	7-19C—ZIP	Direct	49.95
16"	A-75727	5-30—8-29	Belt	49.95

Chain

Size	Part No.	Chain	Drive	Price
16" Bow	A-51972	10	Gear and Belt	\$25.40
16" Bow	A-51850	62C	Direct	26.45

Accessories

Part No.	Description	Price
75728	Bow Guide Spur	\$.95
75729	Spacer	.50
55948	Gear and Belt Drive Guard	8.50
55952	Direct Drive Guard	4.50
A-55668-1	Direct Drive Cover	3.30
A-55591-1	Gear Drive Adjusting Plate	2.50
AA-72184-1	Belt Drive Adjusting Plate	4.75

SAW ACCESSORIES

CLEARING ATTACHMENT

For Models 4-20 and 7-21C

A-56169-A \$42.50

BRUSH CUTTER AND BLADE

DBC Model 7-19C BC \$160.00
GBC Model 4-20 BC and 7-21C BC 164.00

POWER PEELER

Model DA-1 \$165.00

Chain Sharpening Tools

Description	Part No.	Price
1/4" File Holder w/File	22670	\$ 3.95
7/32" File Holder w/File	A-23133	3.95
File 1/4" Round	22676-2	.90
File 7/32" Round	23134	.90
Filing Vise 18"	73839-1	16.95

Sprockets

Description	Part No.	Price
Sprocket 6-tooth 1/2" pitch (4-20—5-20)	55101-A	\$ 1.15
Sprocket 8-tooth 1/2" pitch (4-20—5-20)	55593	1.85
Sprocket 6-tooth 9/16" pitch (4-20—5-20)	55711	4.00
Sprocket 7-tooth 7/16" (includes bearing) EZ	A-56377	5.50

Lubricants and Fuel Cans

Description	Part No.	Price
Engine Oil (3/4 pint)	23130	\$.27
Engine Oil (6 can carton)		1.50
Engine Oil (1 quart)	23362	.60
Engine Oil (gallon pack)		2.29
Homelite Gear Oil	55291	.50
Safety Fuel Can—2 1/2 gal. w/ Safety Spout	AA-71472	6.50
Fuel Can—2 1/2 gallons	72763	2.95
Grease—Recoil Spring	AA-22641	.45

Wedges

Description	Part No.	Price
Wedge—5 1/2" bucking	73842	\$ 1.70
Wedge—7 1/2" felling	73841	2.60
Wedge—7 1/2" bucking	73840	2.90
Wedge—10" felling	73169	3.05

All Prices F.O.B. Factory — Subject to change without notice.

BULLETIN L-806